



For Lease | Light Industrial Space

Altamont Business Centre



Contact Brokers

Michael Carrigg, SIOR

Executive Managing Director
CA License No. 01298928
michael.carrigg@colliers.com
+1 925 227 6220

Michael Donnelly, SIOR

Senior Vice President
CA License No. 01402626
michael.donnelly@colliers.com
+1 925 227 6241

Features

- A seven-building ±151,139 SF light industrial campus off of Vasco Road
- Easy access to I-580
- Close to retail amenities
- Dock and grade level loading
- Tenant improvement dollars available
- Estimated operating expenses: \$0.364
- Flexible lease terms



Additional Parking Stalls Available for Lease

**Ancillary paved parking lot with additional car and truck parking available for rent*

This document/email has been prepared by Colliers for advertising and general information only. Colliers makes no guarantees, representations or warranties of any kind, expressed or implied, regarding the information including, but not limited to, warranties of content, accuracy and reliability. Any interested party should undertake their own inquiries as to the accuracy of the information. Colliers excludes unequivocally all inferred or implied terms, conditions and warranties arising out of this document and excludes all liability for loss and damages arising there from. This publication is the copyrighted property of Colliers and /or its licensor(s). © 2026. All rights reserved. This communication is not intended to cause or induce breach of an existing listing agreement.



Availabilities

Additional Parking Stalls Available for Lease



For Lease

Address	Suite	Size	Office Buildout	Available
6724 Preston Ave.	D	±3,872 SF	15%	Available Now
6752 Preston Ave.	D	±5,016 SF	20%	Available Now
6752 Preston Ave.	E	±5,016 SF	35%	Available Now
6776 Preston Ave.	G	±1,452 SF	15%	Available Now

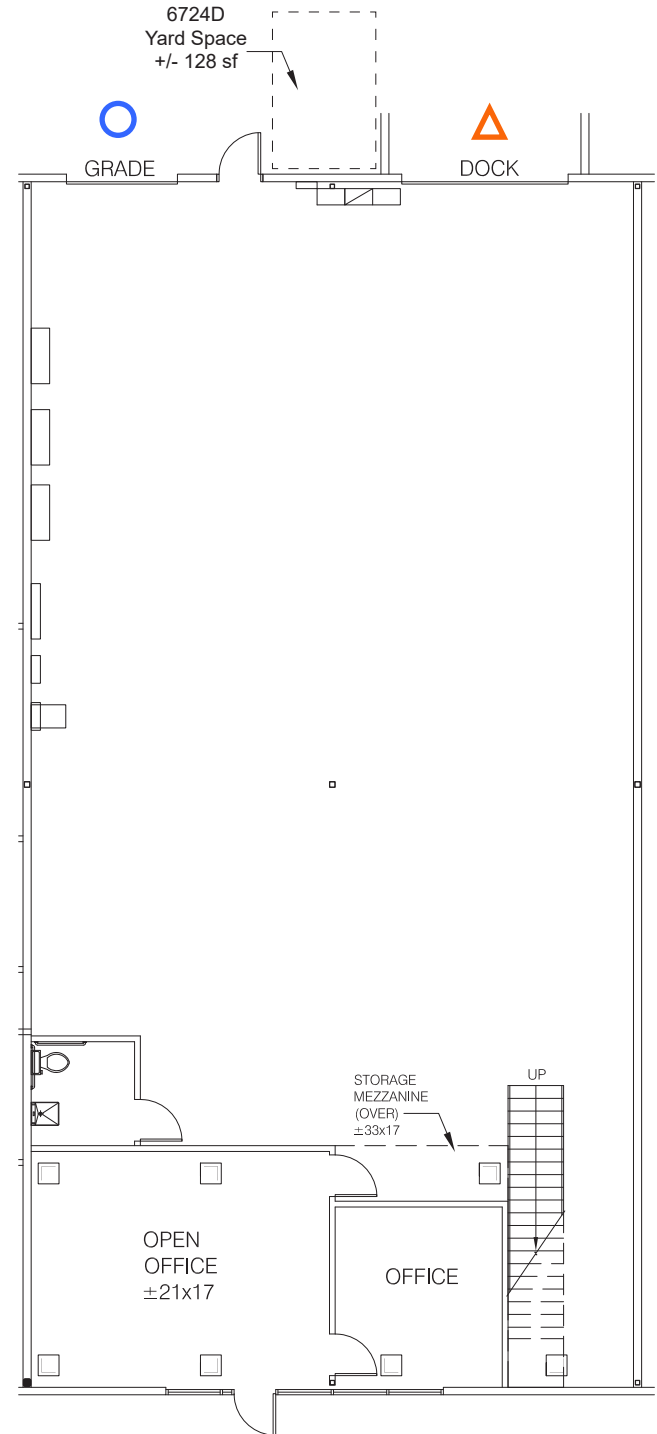
Floor Plan

6724 Preston Avenue
Suite D

- ±3,872 SF
- Available Now



	Grade Level Door
	Dock High Door



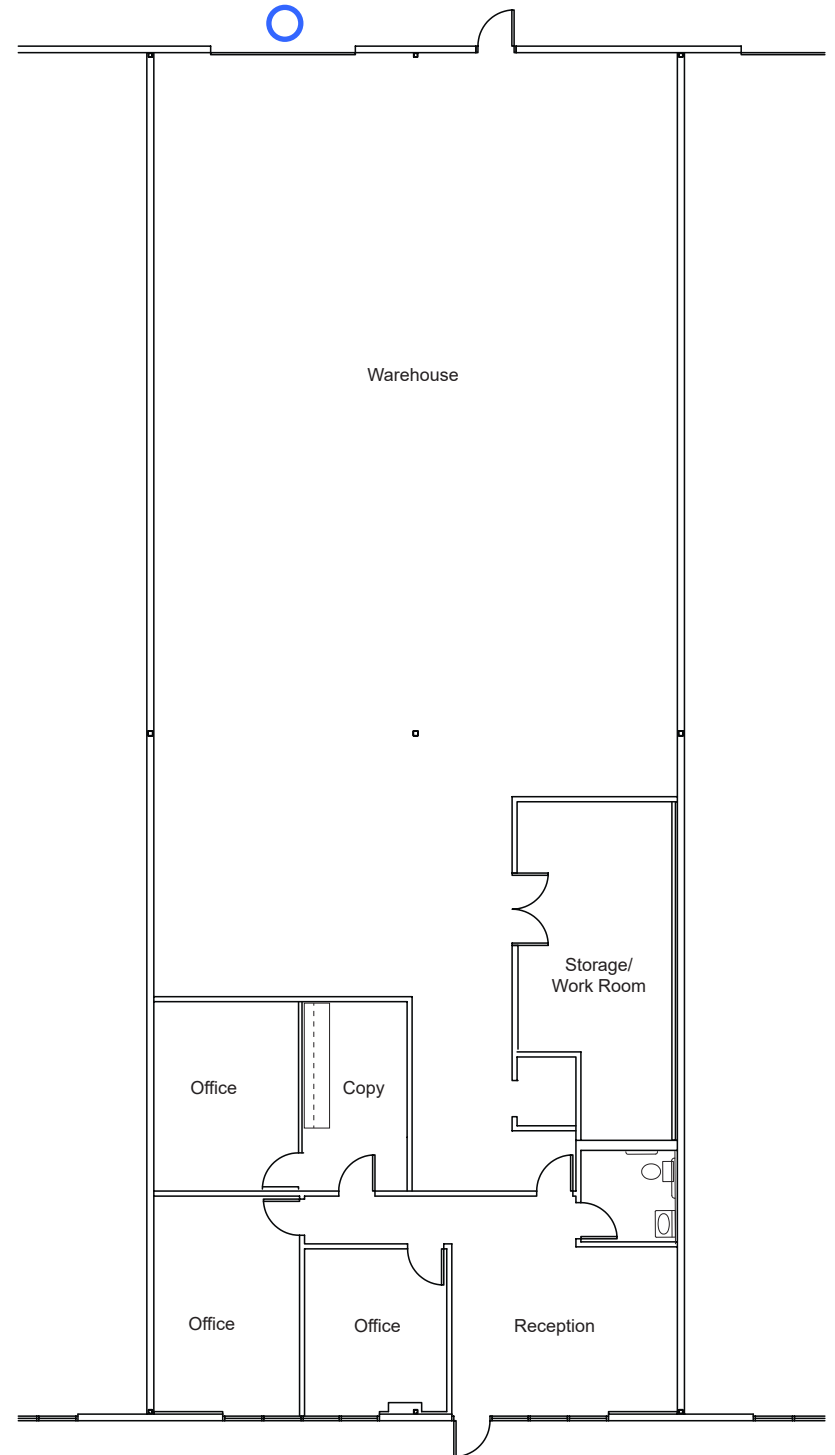
Floor Plan

6752 Preston Avenue
Suite D

- ±5,016 SF
- Available Now



 Grade Level Door



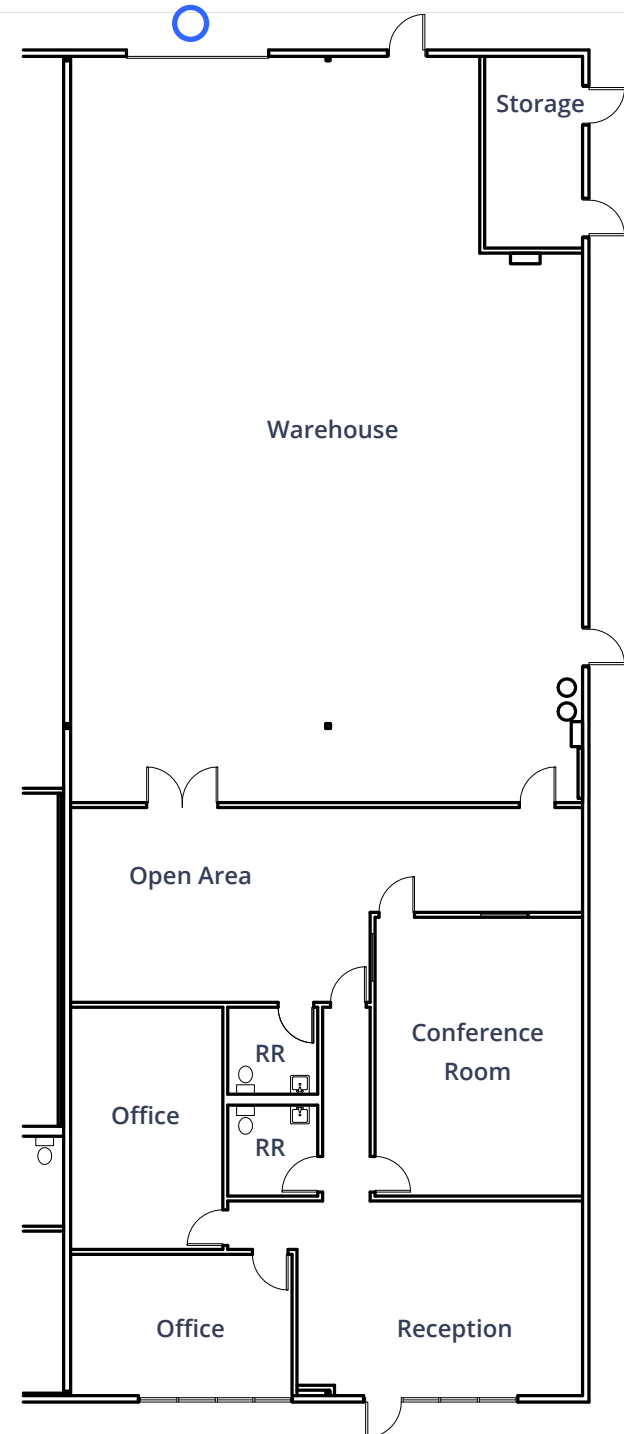
Floor Plan

6752 Preston Avenue
Suite E

- ±5,016 SF
- Available Now



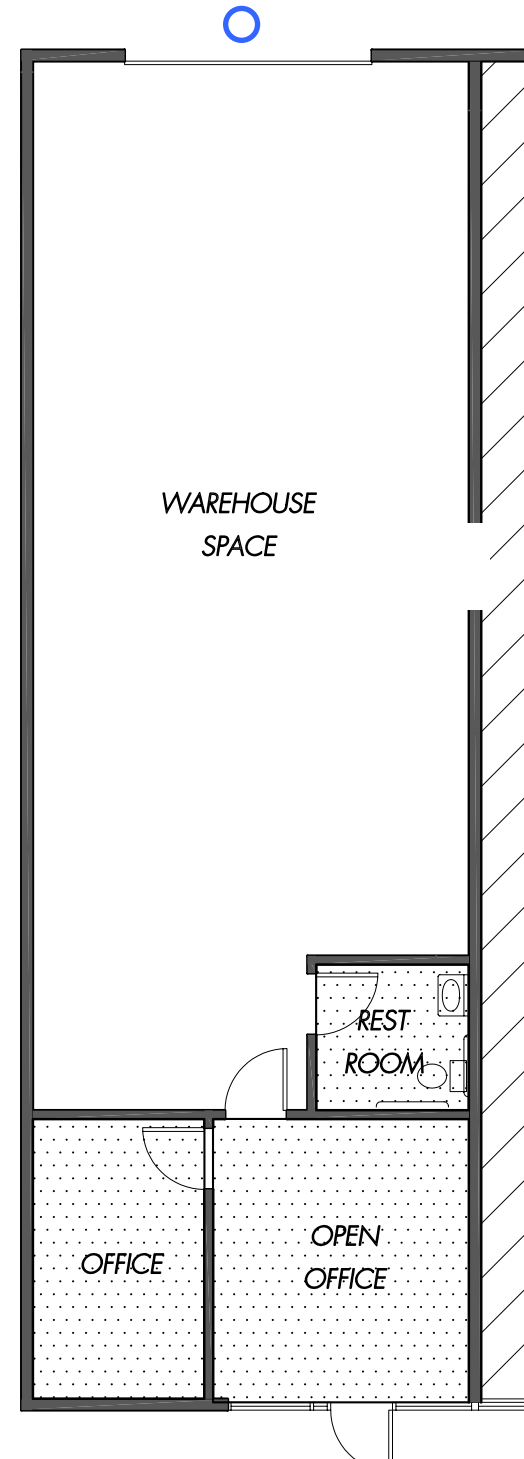
 Grade Level Door



Floor Plan

6776 Preston Avenue
Suite G

- ±1,452 SF
- Available Now



 Grade Level Door