



CP COWORKING

115 SOUTH COURT STREET CROWN POINT, IN 46307

OFFICE BUILDING FOR LEASE





PROPERTY DESCRIPTION

CP CoWorking is a neighborhood shared office community located right on the square in Crown Point, Indiana. It provides a variety of shared office memberships and limited private offices with a full range of amenities.

CP CoWorking community is designed to enhance your professional image. It offers a full range of services including the use of a conference room, secure high-speed internet, copying services and mailbox options as well as many other great amenities. CP Coworking is here to make your clients comfortable and you more productive.

In addition to the Private Offices, we provide co-working memberships for individuals who don't need a private office but need a professional environment. Choose from a variety of seating arrangements, plugin and get busy. We offer a variety of flexible membership plans for every budget. Invite your guests in with a day pass and you can have most anything else you need on an ala carte basis.

LOCATION DESCRIPTION

This property is located within the Chase Bank Building on the Square in Crown Point, Indiana. The Crown Point historic "Square" district is a pedestrian-friendly collection of cafes, shops, and various professional service providers. The Chase Bank Building on the southwest corner of the square is known for its relatively abundant parking. It is located right across the street from Bulldog Park Music Pavilion and Wheeler Middle School. This location offers that neighborhood feel plus the professional image, flexibility, and convenience to balance your work and your life.

*Private offices start at \$650 a month

*CoWorking memberships start at \$134 a month

For more information please visit our website at <https://www.cpcoworking.com>

or by email: contact@cpcoworking.com

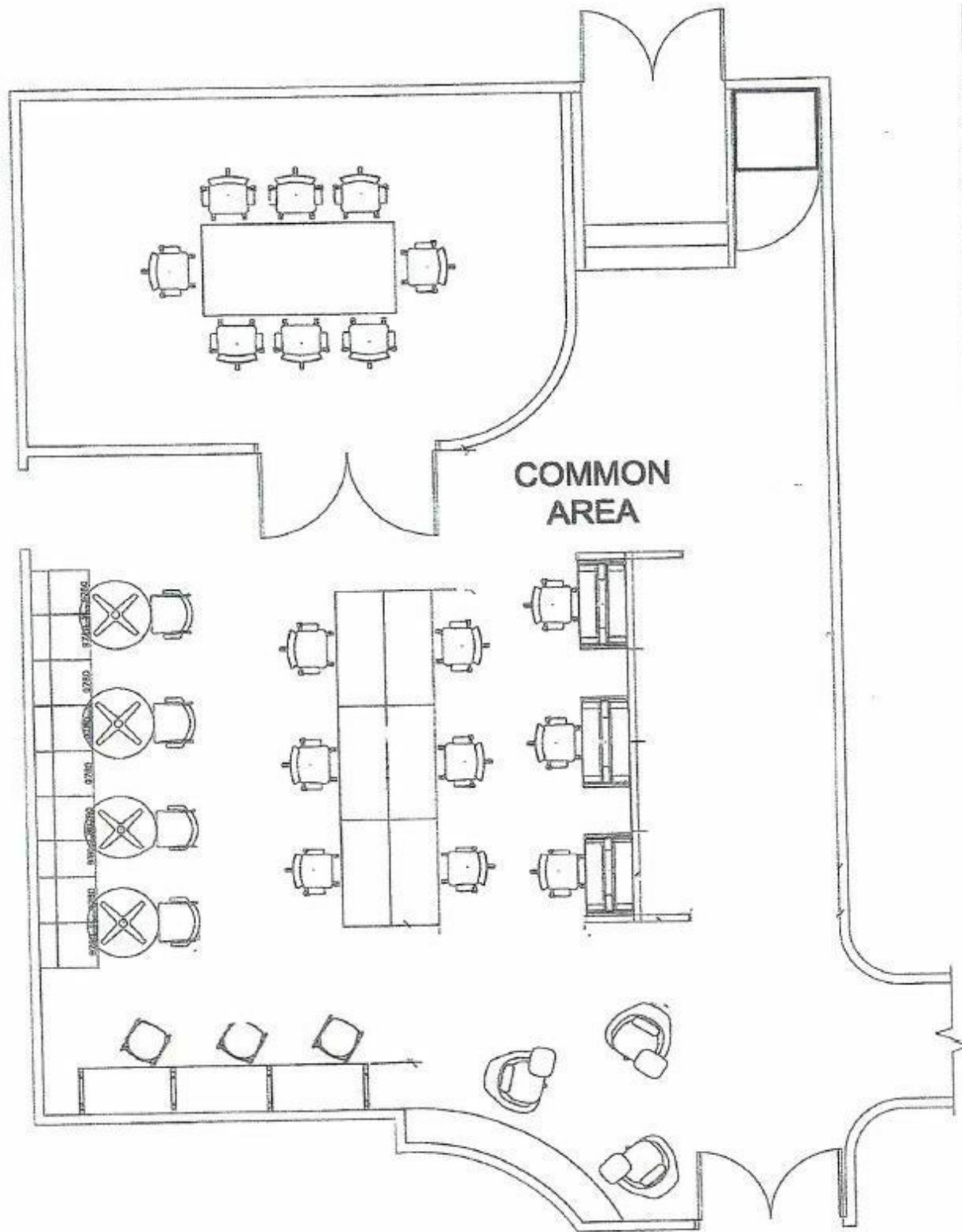


MICHAEL LUNN, CCIM, SIOR

219.769.0733

mlunn@ccim.net

Main Floor



MICHAEL LUNN, CCIM, SIOR

219.769.0733

mlunn@ccim.net

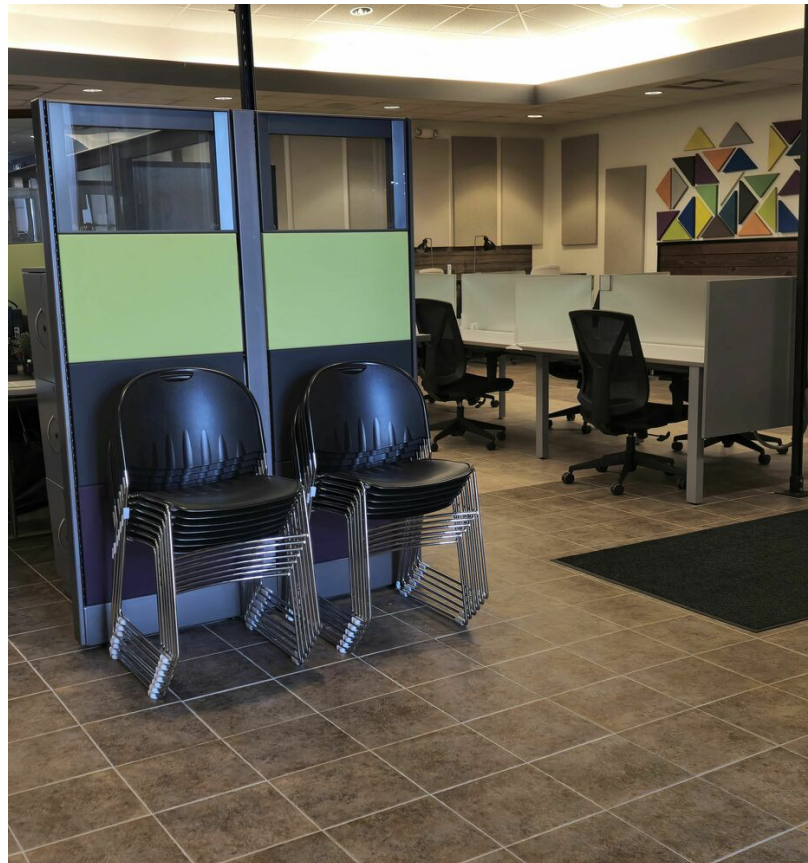


MICHAEL LUNN, CCIM, SIOR
219.769.0733
mlunn@ccim.net



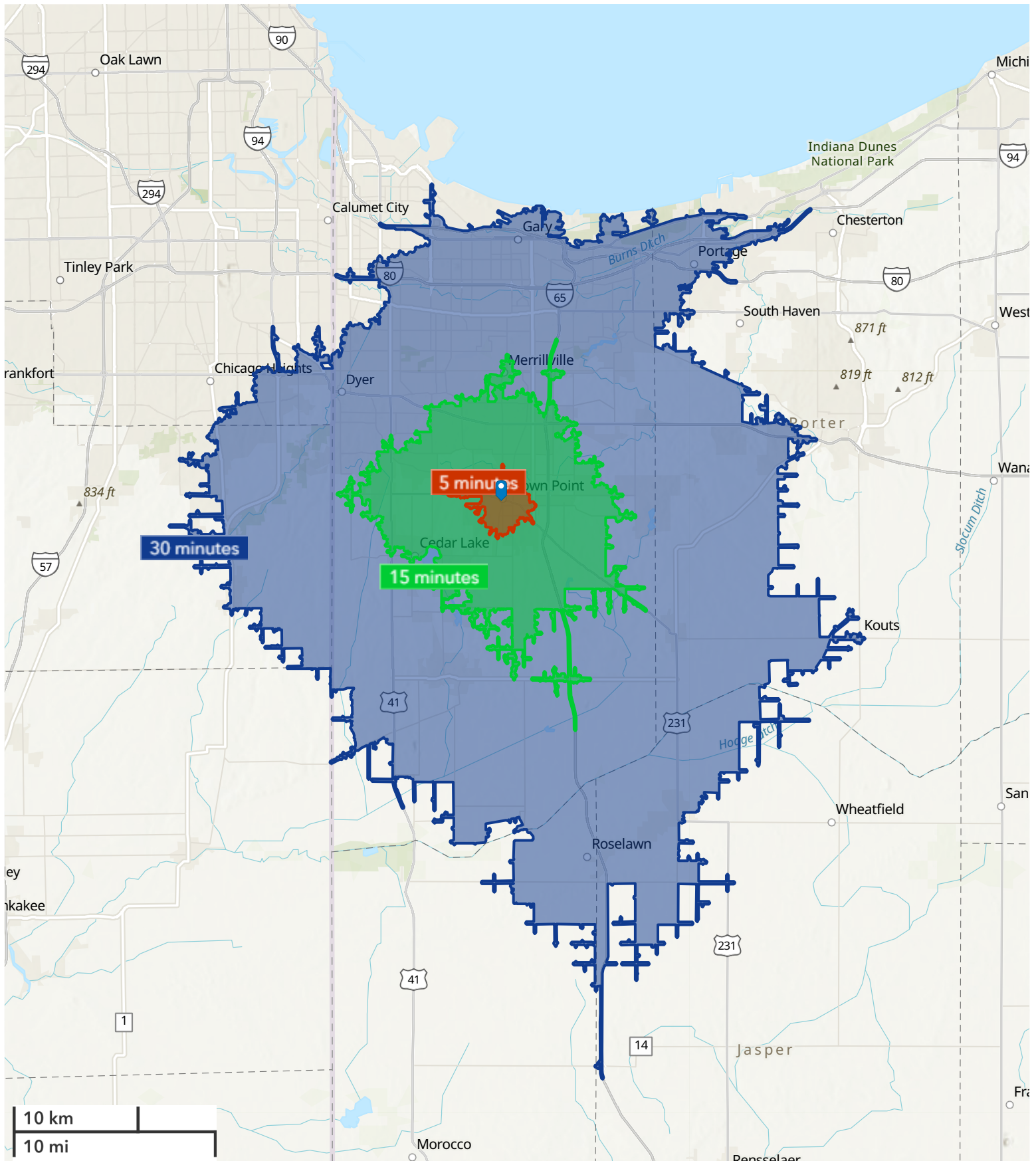
MICHAEL LUNN, CCIM, SIOR
219.769.0733
mlunn@ccim.net

INTERIOR PHOTOS



MICHAEL LUNN, CCIM, SIOR
219.769.0733
mlunn@ccim.net

Drive Time Map 5 15 30 Mins



Executive Summary

115 S Court St, Crown Point, Indiana, 46307 5

115 S Court St, Crown Point, Indiana, 46307

Drive time: 5, 15, 30 minute radii




Population	5 minutes	15 minutes	30 minutes
2010 Population	14,124	87,027	478,434
2020 Population	15,083	99,450	488,481
2025 Population	15,053	105,377	493,469
2030 Population	15,061	108,460	497,423
2010-2020 Annual Rate	0.66%	1.34%	0.21%
2020-2025 Annual Rate	-0.04%	1.11%	0.19%
2025-2030 Annual Rate	0.01%	0.58%	0.16%

Age	5 minutes	15 minutes	30 minutes
2025 Median Age	42.1	41.6	41.3
U.S. median age is 39.1			

Race and Ethnicity	5 minutes	15 minutes	30 minutes
White Alone	83.3%	69.3%	60.1%
Black Alone	2.6%	14.8%	23.0%
American Indian Alone	0.4%	0.4%	0.4%
Asian Alone	2.4%	2.2%	1.6%
Pacific Islander Alone	0.0%	0.0%	0.0%
Some Other Race Alone	2.7%	4.0%	5.2%
Two or More Races	8.6%	9.3%	9.7%
Hispanic Origin	10.7%	13.4%	15.3%
Diversity Index	43.2	60.6	68.4

Households	5 minutes	15 minutes	30 minutes
2010 Total Households	5,849	32,174	181,273
2020 Total Households	6,084	37,824	191,064
2025 Total Households	6,121	40,495	196,870
2030 Total Households	6,167	42,181	200,924
2010-2020 Annual Rate	0.39%	1.63%	0.53%
2020-2025 Annual Rate	0.12%	1.31%	0.57%
2025-2030 Annual Rate	0.15%	0.82%	0.41%
2025 Average Household Size	2.41	2.55	2.49
Wealth Index	90	107	90

 **Source:** Esri forecasts for 2025 and 2030. U.S. Census 2010 and 2020 Census data converted by Esri into 2020 geography.

Mortgage Income	5 minutes	15 minutes	30 minutes
2025 Percent of Income for Mortgage	19.9%	20.2%	21.4%
Median Household Income			
2025 Median Household Income	\$91,418	\$97,050	\$78,921
2030 Median Household Income	\$104,240	\$110,637	\$91,547
2025-2030 Annual Rate	2.66%	2.66%	3.01%
Average Household Income			
2025 Average Household Income	\$110,413	\$120,062	\$103,152
2030 Average Household Income	\$122,976	\$134,258	\$115,006
Per Capita Income			
2025 Per Capita Income	\$44,936	\$46,532	\$41,148
2030 Per Capita Income	\$50,445	\$52,642	\$46,443
2025-2030 Annual Rate	2.34%	2.50%	2.45%
Income Equality			
2025 Gini Index	38.5	40.8	43.2
Socioeconomic Status			
2025 Socioeconomic Status Index	56.9	54.9	49.0
Housing Unit Summary			
Housing Affordability Index	115	113	104
2010 Total Housing Units	6,157	34,160	198,749
2010 Owner Occupied Hus (%)	76.2%	76.9%	74.1%
2010 Renter Occupied Hus (%)	23.8%	23.1%	25.9%
2010 Vacant Housing Units (%)	5.0%	5.8%	8.8%
2020 Housing Units	6,399	39,783	208,540
2020 Owner Occupied HUs (%)	77.0%	78.0%	73.5%
2020 Renter Occupied HUs (%)	23.0%	22.0%	26.5%
Vacant Housing Units	4.8%	4.8%	8.4%
2025 Housing Units	6,415	42,573	214,715
Owner Occupied Housing Units	78.6%	80.3%	75.5%
Renter Occupied Housing Units	21.4%	19.7%	24.5%
Vacant Housing Units	4.6%	4.9%	8.3%
2030 Total Housing Units	6,503	43,998	219,027
2030 Owner Occupied Housing Units	4,911	34,125	154,133
2030 Renter Occupied Housing Units	1,257	8,056	46,791
2030 Vacant Housing Units	336	1,817	18,103



Google

Imagery ©2026 Airbus, CNES / Airbus, Maxar Technologies, Vexcel Imaging US, Inc.



MICHAEL LUNN, CCIM, SIOR
219.769.0733
mlunn@ccim.net