

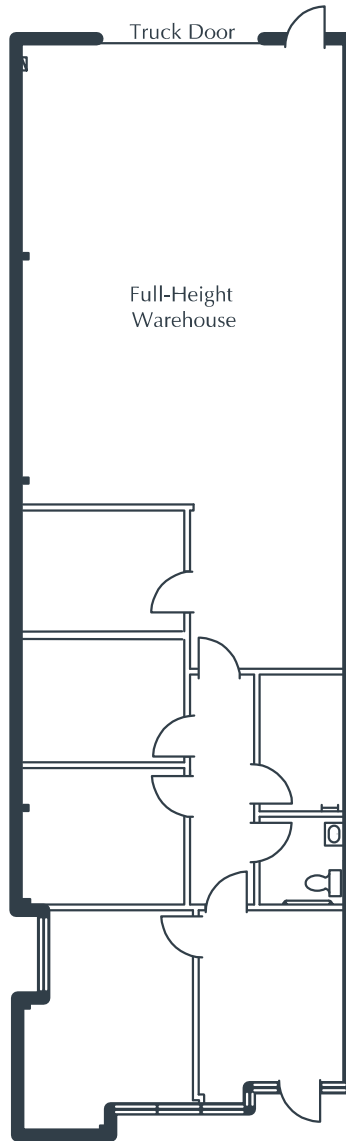
# MISSION VIEJO COMMERCE PARK

23362 Madero, Suite E  
Mission Viejo, CA

2,112 Square Feet

\$1.65 SF/MO

Triple Net



## NOTES

- Reception
- Window Office
- 4 Interior Offices
- Restroom
- Ground-Level Truck Door
- Approximately 1,152 sq. ft. of Full-Height Warehouse
- Part of a Professionally Managed Business Park

Created by Olen Commercial Realty Corp., 2022.  
Information is not to be published or copied without  
written approval. Square footage and floor plans are  
estimates and should be separately verified. All rates,  
terms, floor plans, and building facts are subject to  
change without notice.

ea 07.17.2025

**ELLYSSA DERRY**

Senior Leasing Director

949.719.7204

ederry@olen.com



Seven Corporate Plaza

Newport Beach, CA

949.644.6536

www.olen.com