



Santa Anna Medical Center

1125 E. 17th St.

Available Unit # East-113

Ready for medical occupancy, in 1st floor, approx. 2,742 RSF
9 exam rooms some with sink, X-Ray room, brake room.

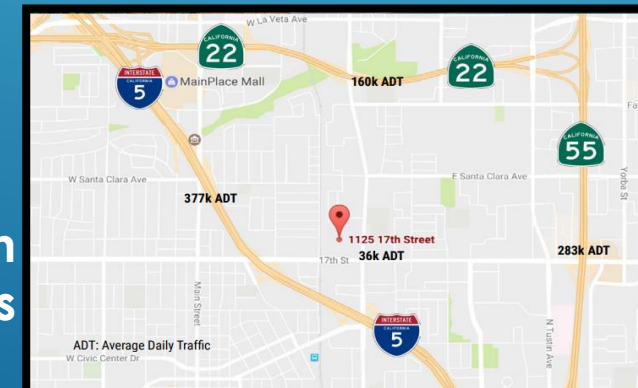
Free Surface Parking with ratio of up to 5 / 1,000, Visible From Freeway 5
Immediate access to Freeway (5, 22, 55)

Convenient free surface parking, Car Count Approx. 300,000 Cars

On-site Medical Lab, Radiology and ext.
Over 30 Different Medical and Dental practices

For More Info. Contact
Sima Shidfar, MSIE
Tel: (818) 232-2299
Sima@twsrealty.com

**Great Location
With easy Access**



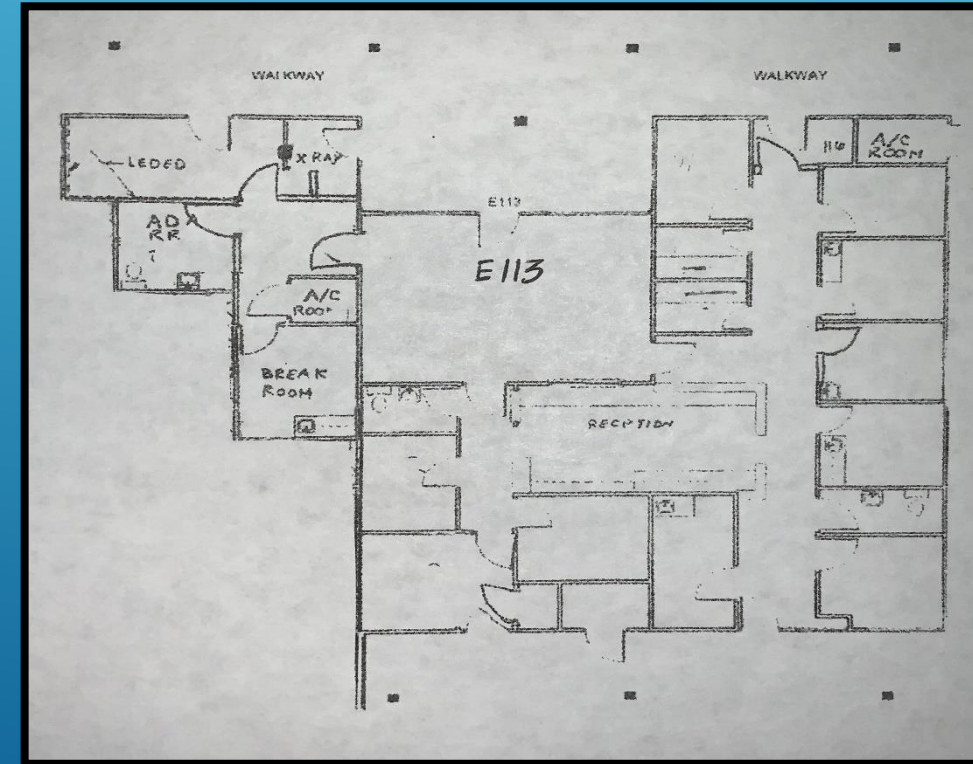
Suite E-113

1125 E. 17th St.

Santa Anna Medical Center



Floor Plan Approximately 2,742 RSF



This information has been secured from sources we believe to be reliable, but we make no representations or warranties, expressed or implied, as to the accuracy of the information. References to square footage or age are approximate. Tenant must verify the information and bears all risk for any inaccuracies.