



# 34 MARCONI STREET BRONX, NY

## MEDICAL & OFFICE SPACE AVAILABLE FOR LEASE

### SPACE AVAILABLE:

1st Floor: 2,107 SF

2nd Floor: 4,000 SF

### PRICE:

Upon Request

### AVAILABLE:

April 2024

### FOR LEASING INFORMATION:

Simone Development Companies

**Josh Gopan**

[jgopan@simdev.com](mailto:jgopan@simdev.com) | 718-215-3000 x113

**Jeremy Schwartz**

[jschwartz@simdev.com](mailto:jschwartz@simdev.com) | 718-215-3000 x296

### PROPERTY FEATURES:

- Newly Renovated Building
- Private Parking
- Shuttle Bus to #6 Train
- Access to Campus Amenities
- Campus Security
- Ground Floor
- Near Campus Retailers: LA Fitness, Chipotle, Dunkin, and Marriott Hotel
- Adjacent to Montefiore, Jacobi Hospital, Albert Einstein School of Medicine

*Information contained herein subject to errors, omissions, change of price, rental or other conditions prior to sale, lease or financing, including the withdrawal without notice.*

**SIMONE**<sup>®</sup>  
DEVELOPMENT COMPANIES

# FLOOR PLAN

SPACE AVAILABLE: 2,107 SF



FOR LEASING INFORMATION:

Simone Development

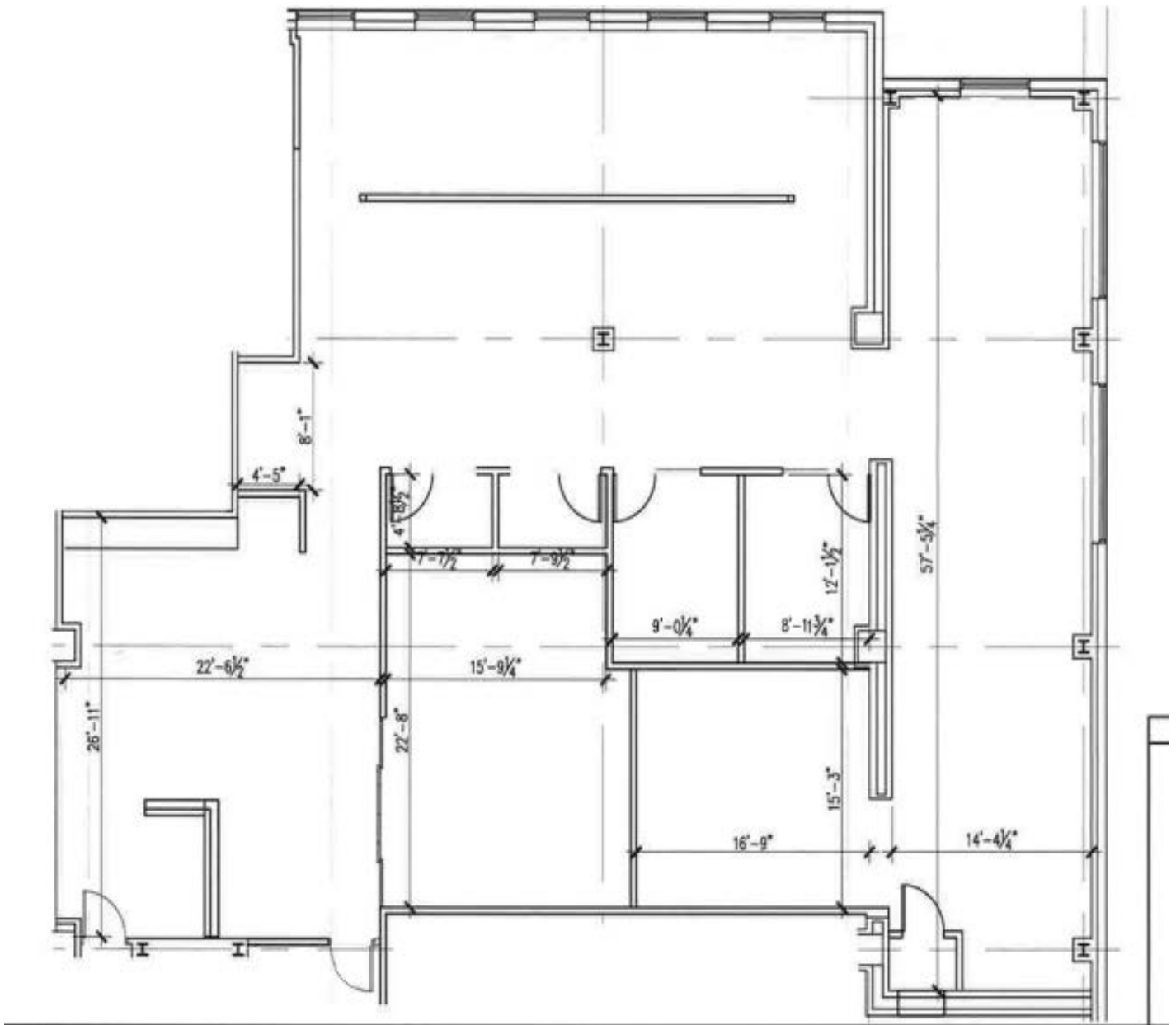
Josh Gopan [jgopan@simdev.com](mailto:jgopan@simdev.com) | 718-215-3000 x113

Jeremy Schwartz [jschwartz@simdev.com](mailto:jschwartz@simdev.com) | 718-215-3000 x296

**SIMONE**<sup>®</sup>  
DEVELOPMENT COMPANIES

# FLOOR PLAN

SPACE AVAILABLE: 4,000 SF



FOR LEASING INFORMATION:

Simone Development

Josh Gopan jgopan@simdev.com | 718-215-3000 x113

Jeremy Schwartz jschwartz@simdev.com | 718-215-3000 x296

**SIMONE**<sup>®</sup>  
DEVELOPMENT COMPANIES

# SITE MAP



**FOR LEASING INFORMATION:**

**Simone Development**

**Josh Gopan** [jgopan@simdev.com](mailto:jgopan@simdev.com) | 718-215-3000 x113

**Jeremy Schwartz** [jschwartz@simdev.com](mailto:jschwartz@simdev.com) | 718-215-3000 x296

**SIMONE**<sup>®</sup>  
DEVELOPMENT COMPANIES