

# FOR SUBLEASE

20631 Ventura Blvd, Suite 200 | Woodland Hills, CA



For more information please contact:

**Stacy Vierheilg-Fraser**  
**818.933.0313**

svierheilg@lee-re.com

DRE#00986794

## PROPERTY DETAILS

<b>Available</b>	Suite 200   ±4,220 SF
<b>Lease Rate</b>	\$1.00 FSG
<b>Term</b>	Thru 02/01/2027
<b>Parking</b>	3/1000 Parking at \$75 per Car

## FEATURES

- 2 Kitchens Including an Industrial Kitchen
- Great Location
- Freeway Accessibility
- Some Builts In
- Private Restroom



Lee & Associates® - LA North/Ventura, Inc.  
Corporate ID #01191898

*A Member of the Lee & Associates® Group of Companies*

15250 Ventura Blvd., Suite 100  
Sherman Oaks, CA 91403  
P:818.986.9800 F:818.933.0405  
www.lee-associates.com

No warranty or representation is made to the accuracy of the foregoing information. Terms of sale or lease and availability are subject to change or withdrawal without notice.

# FOR SUBLEASE

20631 Ventura Blvd, Suite 200 | Woodland Hills, CA

## PROPERTY PHOTOS



Stacy Vierheilg-Fraser • 818.933.0313 • svierheilg@lee-re.com



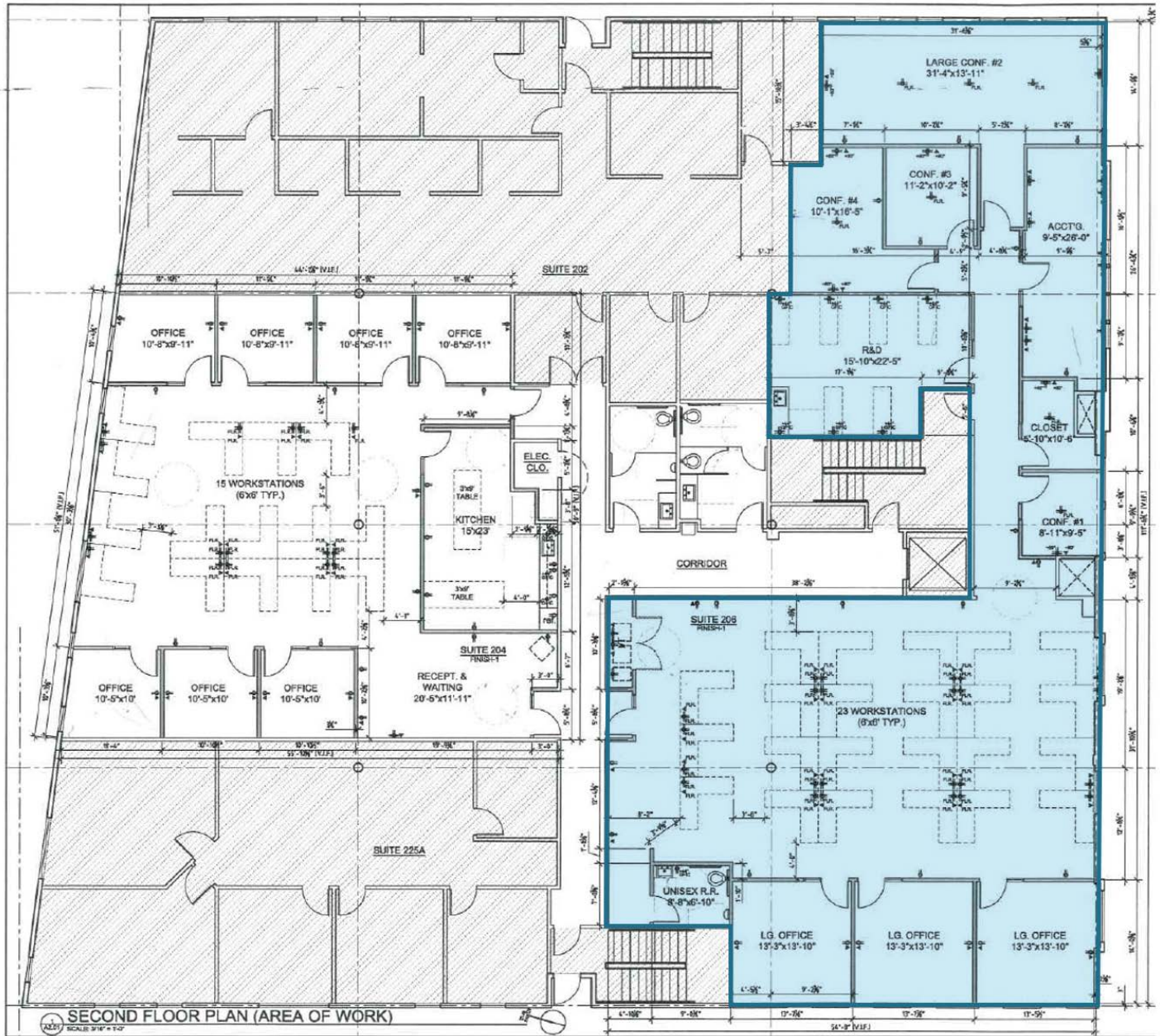
No warranty or representation is made to the accuracy of the foregoing information. Terms of sale or lease and availability are subject to change or withdrawal without notice.

# FOR SUBLEASE

20631 Ventura Blvd, Suite 200 | Woodland Hills, CA

## FLOOR PLANS

### 2nd Floor



# FOR SUBLEASE

20631 Ventura Blvd, Suite 200 | Woodland Hills, CA

## AMENITIES AERIAL



Stacy Vierheilg-Fraser • 818.933.0313 • svierheilg@lee-re.com

**LEE & ASSOCIATES**  
COMMERCIAL REAL ESTATE SERVICES

No warranty or representation is made to the accuracy of the foregoing information. Terms of sale or lease and availability are subject to change or withdrawal without notice.