



Creative SOMA Timber Space with Signage Opportunity

370 4th Street, 2nd Floor
San Francisco, CA

AVISON
YOUNG



Space Highlights

5,736 SF

SIZE

Negotiable

ASKING RENT

Now

AVAILABILITY

Negotiable

TERM

Buildout

HIGH-EXPOSED WOODEN CEILINGS W/ WOODEN TRUSSES

OPEN AREA FOR 30-60 WORKSTATIONS

6 CONFERENCE ROOMS

3 PHONE ROOMS

2 KITCHENS AND ENTERTAINING AREA

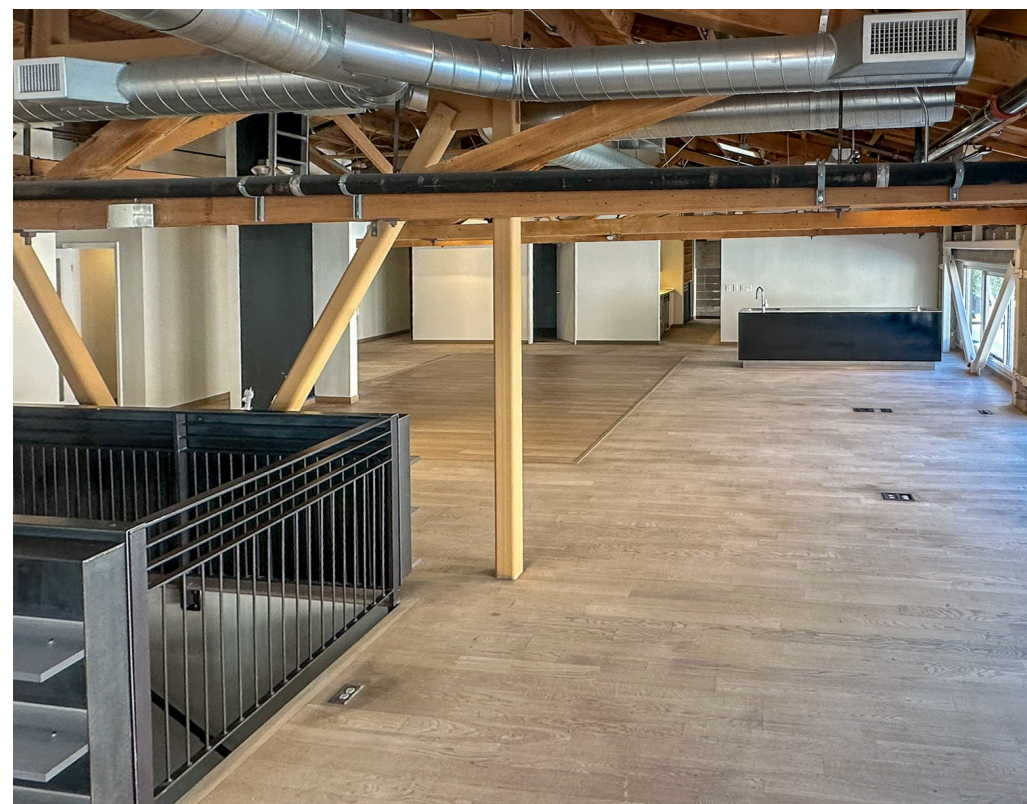
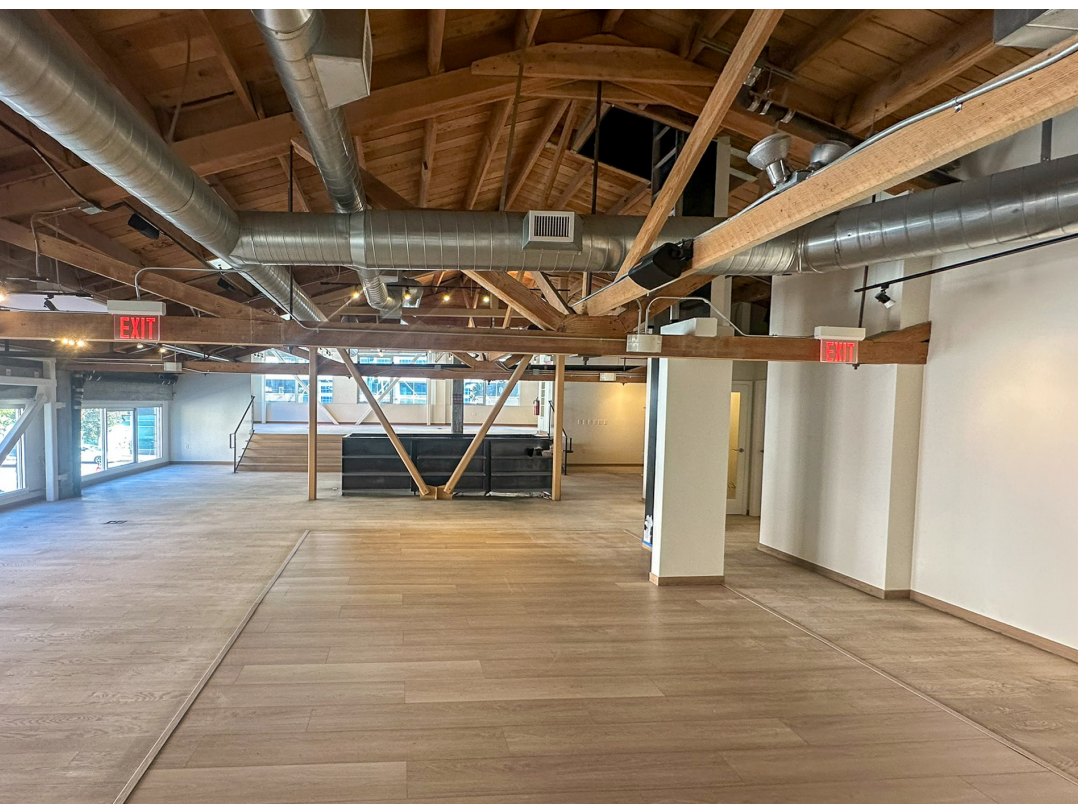
3 SIDES OF WINDOW LINE WITH A LOT OF NATURAL LIGHT

4 GENDER-NEUTRAL RESTROOMS

FULL HVAC

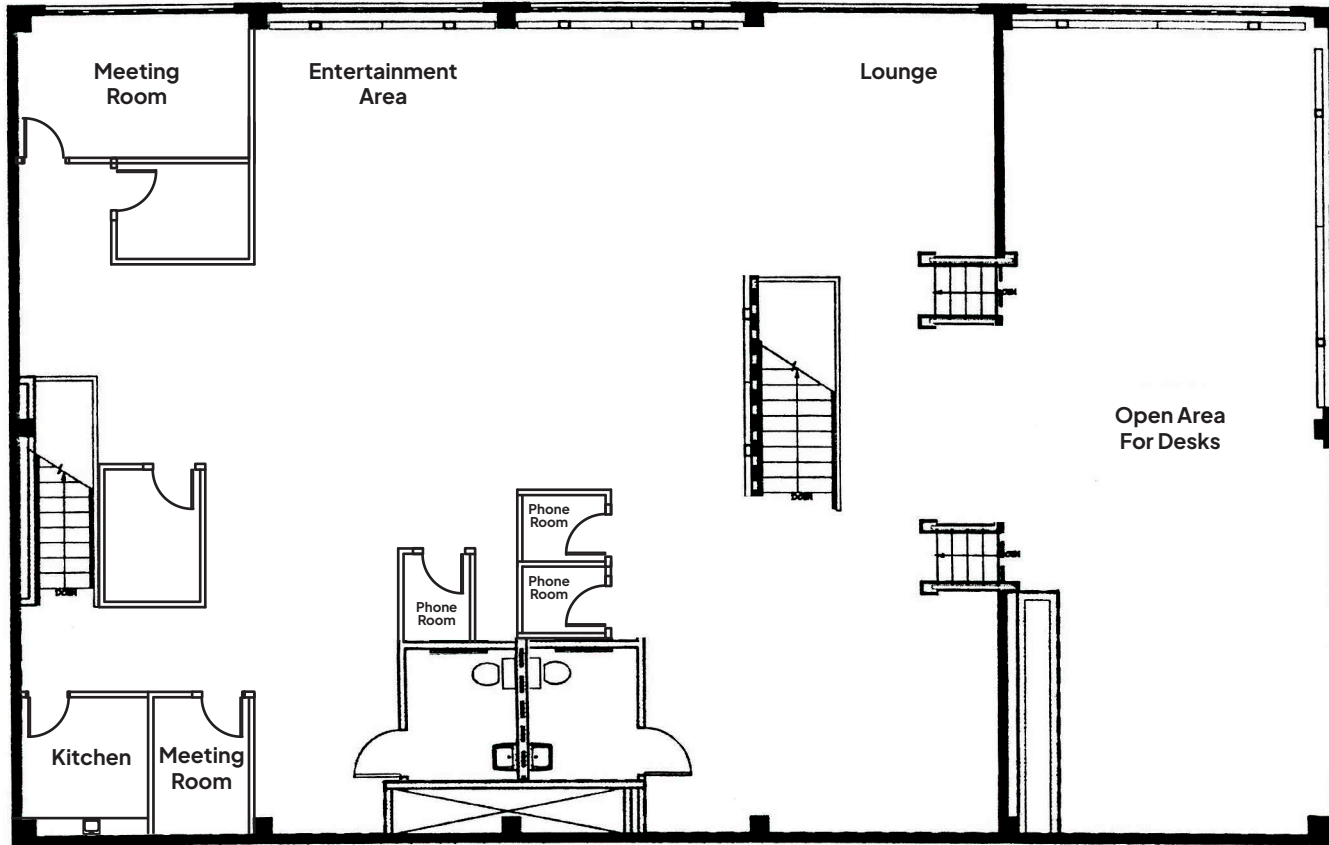
OFFICE OR RETAIL PERMITTED

BUILDING SIGNAGE VISIBLE FROM 4TH STREET AVAILABLE



2nd Floor Plan

5,736 SF



Floor plan not to scale

Tyler Paratte
650.288.8533
tyler.paratte@nmrk.com

Colton Hanley
415.913.8699
colton.hanley@avisonyoung.com



**AVISON
YOUNG**

Creative SOMA Timber Space with Signage Opportunity

370 4th Street, 2nd Floor
San Francisco, CA

Tyler Paratte
650.288.8533
tyler.paratte@nmrk.com
RE Lic# 02048770

Colton Hanley
415.913.8699
colton.hanley@avisonyoung.com
RE Lic# 02089768

AVISON
YOUNG