



AVAILABLE FOR SALE

5 MAPLE AVENUE

CEDARVILLE, NJ 08331

128,000 SF INDUSTRIAL PROPERTY ON 58 ACRES

AVAILABLE IMMEDIATELY - \$9,500,000

CONTACT

JONATHAN KLEAR

+1 856 433 1801

jonathan.klear@naimertz.com

FRED MEYER, SIOR

+1 856 802 6515

fred.meyer@naimertz.com

NAIMertz

856.234.9600 | naimertz.com

NAI MERTZ DISCLAIMER: NO WARRANTY OR REPRESENTATION, EXPRESS OR IMPLIED, IS MADE AS TO THE ACCURACY OF THE INFORMATION CONTAINED HEREIN, AND THE SAME IS SUBMITTED SUBJECT TO ERRORS, OMISSIONS, CHANGE OF PRICE, RENTAL OR OTHER CONDITIONS, PRIOR SALE, LEASE OR FINANCING, OR WITHDRAWAL WITHOUT NOTICE, AND OF ANY SPECIAL LISTING CONDITIONS IMPOSED BY OUR PRINCIPALS NO WARRANTIES OR REPRESENTATIONS ARE MADE AS TO THE CONDITION OF THE PROPERTY OR ANY HAZARDS CONTAINED THEREIN ARE ANY TO BE IMPLIED. OUTLINES ARE APPROXIMATE AND SHOWN ONLY TO IDENTIFY THE PARCEL IN CONSIDERATION.

PROPERTY HIGHLIGHTS

- 128,000 SF building
- Situated on 58 acres
- Built in 1990
- New roof installed 6 years ago
- 10 dock doors w/pit levelers (12x10)
- 2 drive-in doors (10x10)
- 1 drive-in door (14x12)
- 29'8" ceiling height
- 40' x 40' column spacing
- Two electric services: One (1) 600 amp and one (1) 1,200 amp to total 1,800 amp 480 volt, 3-phase
- Wet sprinklered
- T5 motion controlled lighting
- Propane heat
- Natural gas line to the building
- Coolers: 7 compartments, 33-45 degrees
- Well water & septic system
- Zoned MC1
- Real Estate Taxes: \$50,933.75 (2025)
- 7.7 miles to Millville Executive Airport
- 10 miles to Route 55
- 15 miles to Route 47



CONTACT

JONATHAN KLEAR

+1 856 433 1801

jonathan.klear@naimertz.com

FRED MEYER, SIOR

+1 856 802 6515

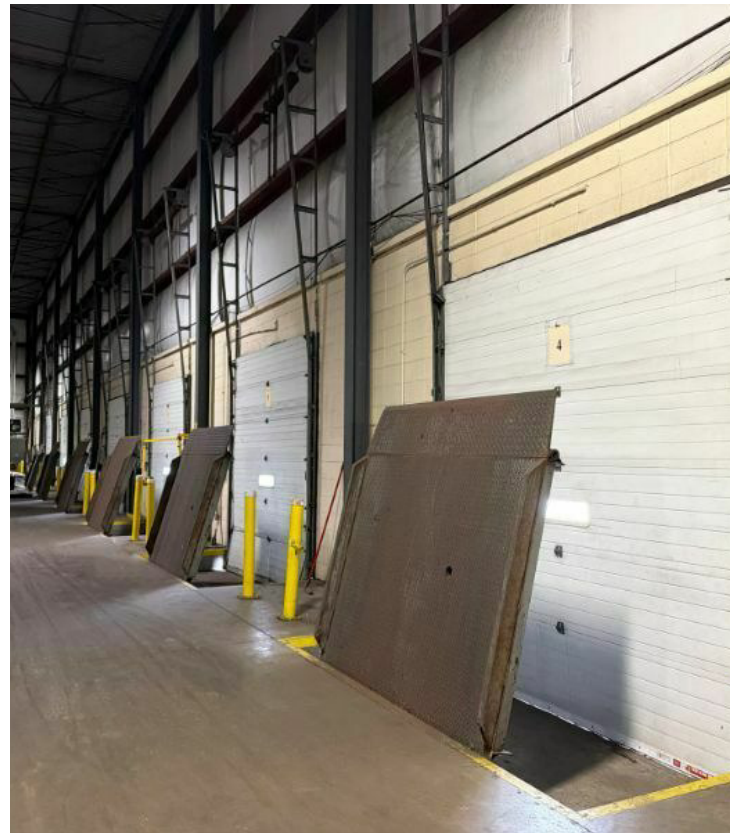
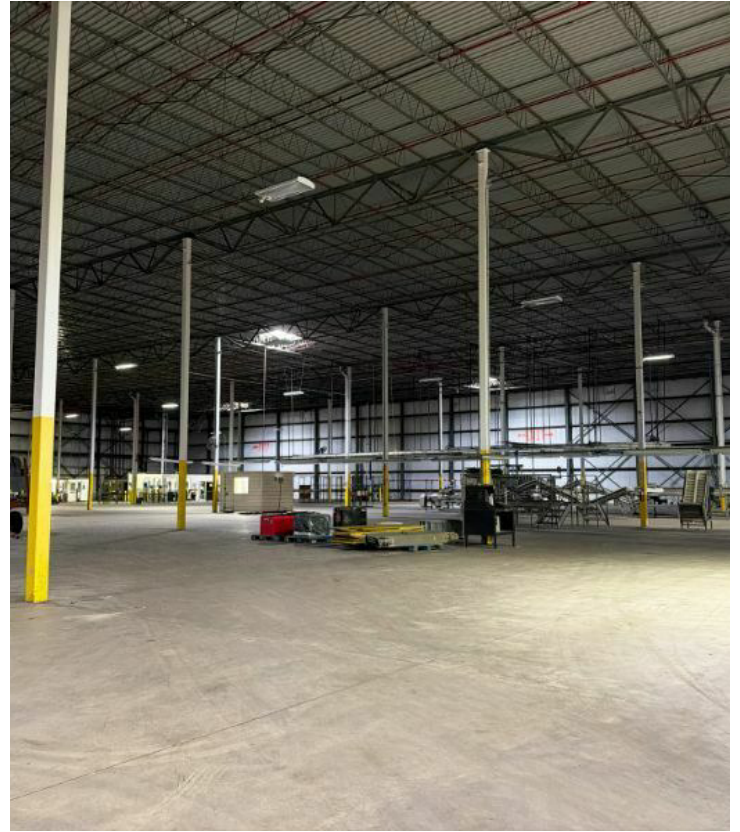
fred.meyer@naimertz.com

Naimertz

856.234.9600 | naimertz.com

ADDITIONAL PHOTOS

5 MAPLE AVENUE CEDARVILLE, NJ



CONTACT

JONATHAN KLEAR

+1 856 433 1801

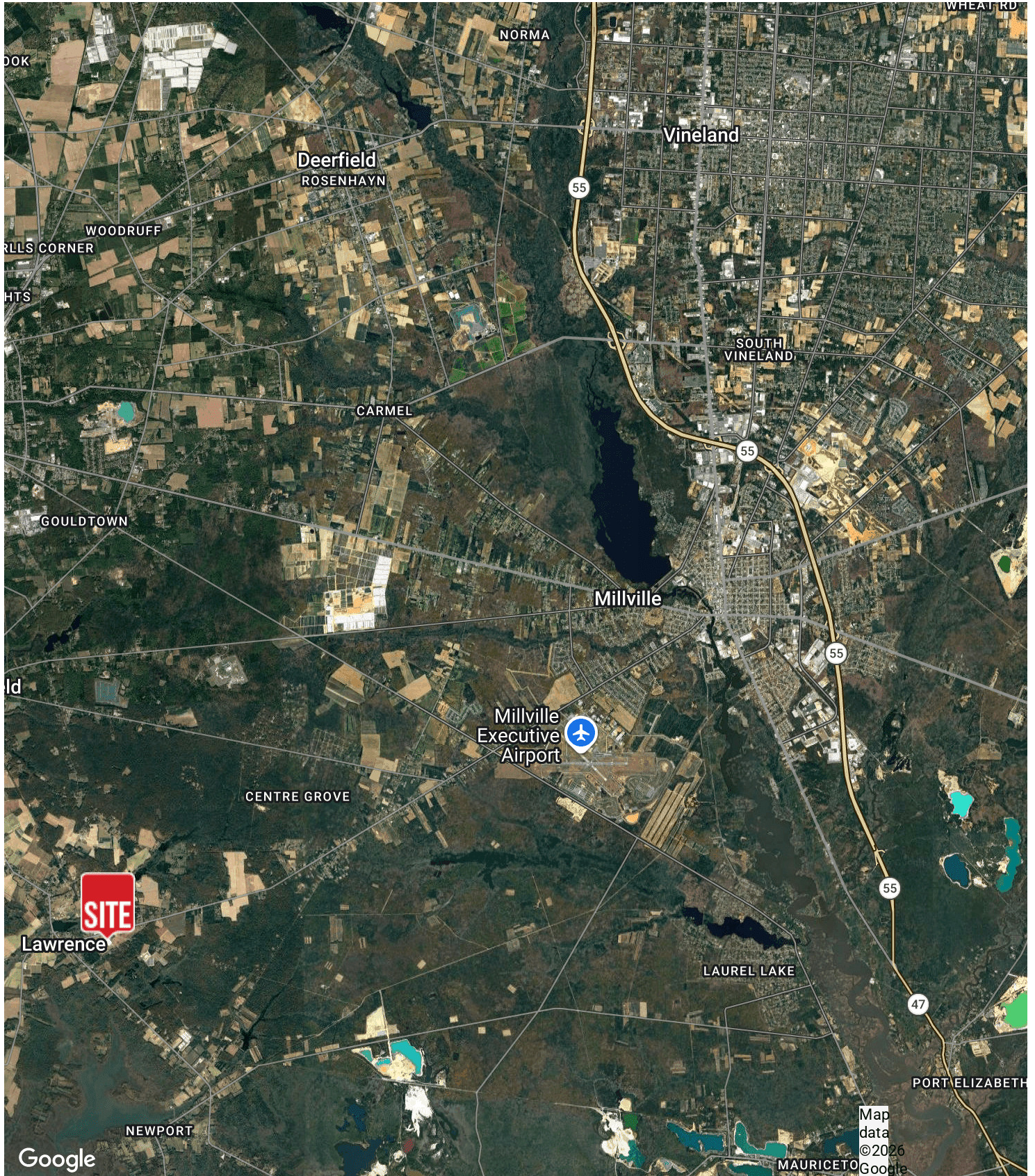
jonathan.klear@naimertz.com

FRED MEYER, SIOR

+1 856 802 6515

fred.meyer@naimertz.com

NAIMertz
856.234.9600 | naimertz.com



CONTACT

JONATHAN KLEAR
+1 856 433 1801
jonathan.klear@naimertz.com

FRED MEYER, SIOR
+1 856 802 6515
fred.meyer@naimertz.com