

FOR LEASE

2,081 - 2,500 RSF Available Medical Office Space

550 Pope Avenue Winter Haven, FL 33881



 FranklinStreet

FSOI, LLC | A Licensed Florida Broker # CQ1048040

KATHERINE SCATUORCHIO | Director
Katherine.Scatuorchio@FranklinSt.com | 407.458.5412

PROPERTY SUMMARY

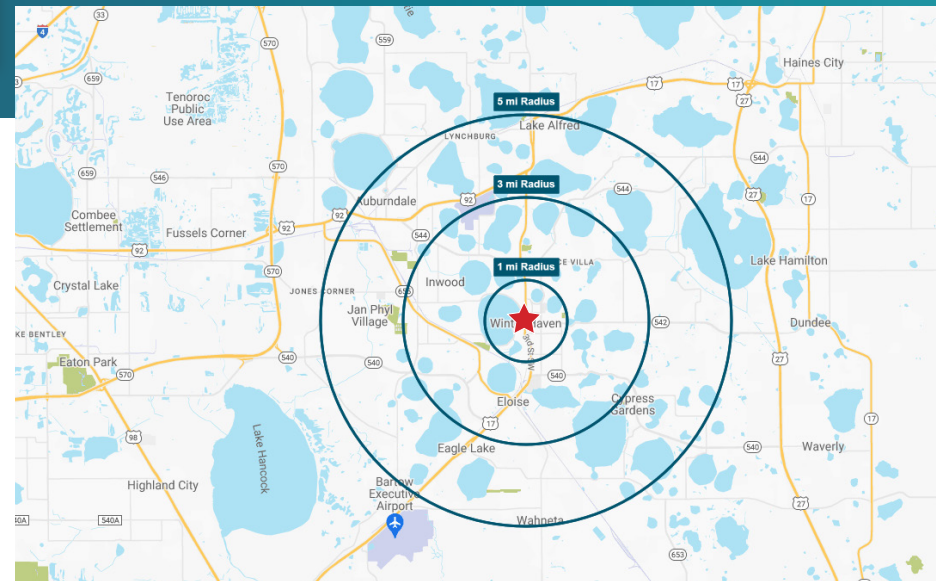


PROPERTY HIGHLIGHTS

- 2,081 - 2,500 RSF
- Office/Medical Office Space
- Ready to be designed for your business requirements
- Double-door entry off the elevator lobby
- Situated in front of beautiful Downtown Winter Haven
- Over 100' of Frontage on busy Highway 17
- Monument Signage Available
- \$31.00/RSF NNN

AREA DEMOGRAPHICS

	1 MILE	3 MILE	5 MILE
Population	7,063	54,945	110,147
Total Households	3,151	21,333	42,279
Average Income	\$52,936	\$64,414	\$65,394
Median Age	39.3	39.1	39.5
Daytime Population	40,070	55,088	73,388



550 POPE AVENUE, WINTER HAVEN, FL 33881

INTERIOR

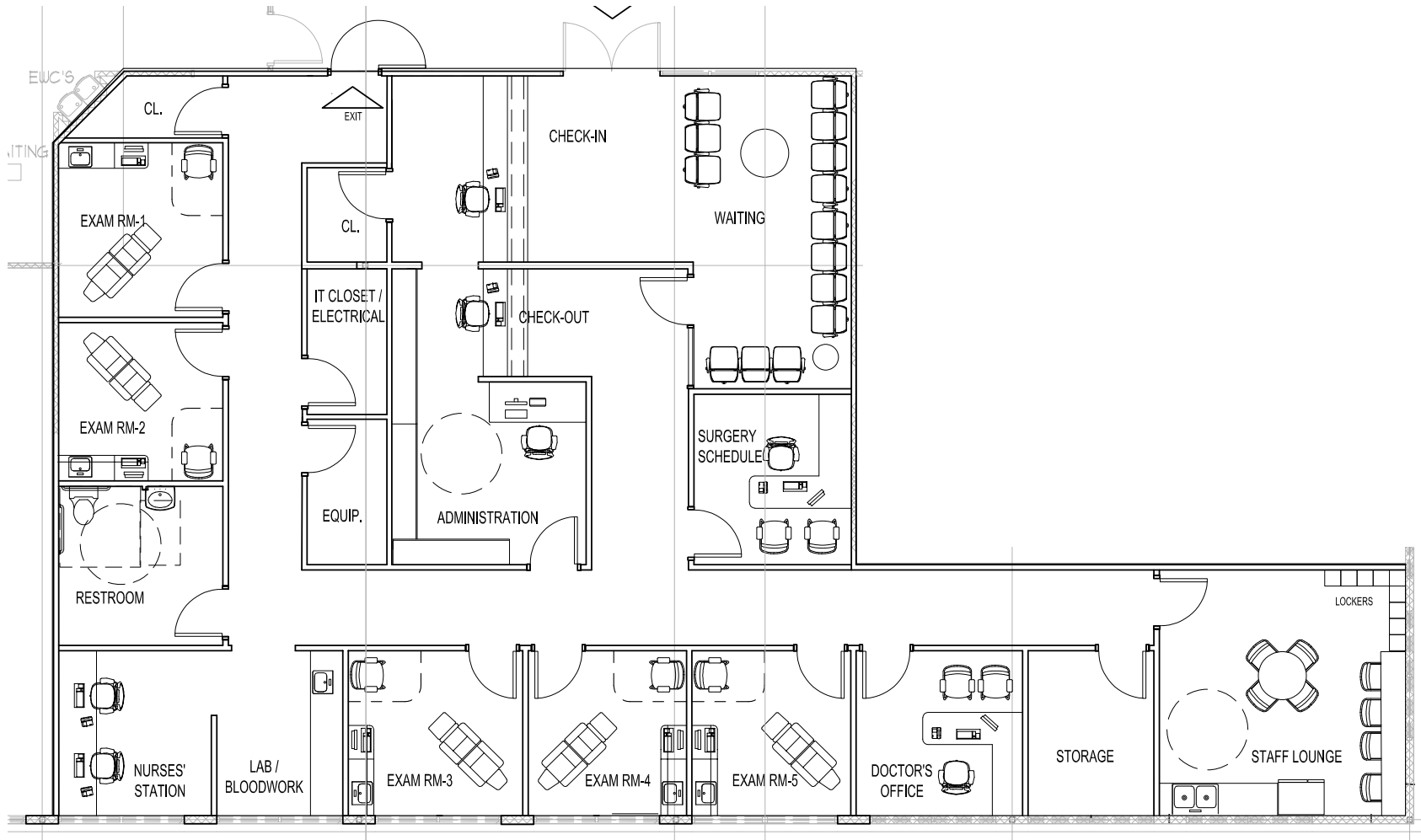


VIDEO WALK-THROUGH



PROPOSED FLOOR PLAN

SAMPLE ONLY- 2,500 RSF PLAN



DEMOGRAPHICS

DEMOGRAPHIC SUMMARY

Winter Haven City, FL
Geography: Place

KEY FACTS

52,955

Population



20,876

Households

47.4

Median Age

\$44,912

Median Disposable Income

EDUCATION

9.7%

No High School Diploma



36.1%

High School Graduate



32.5%

Some College/
Associate's Degree



21.6%

Bachelor's/Grad/
Prof Degree

INCOME



\$52,561

Median Household Income



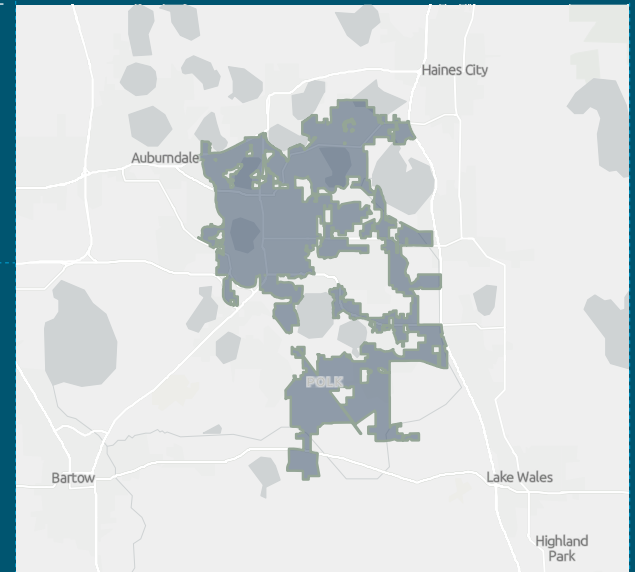
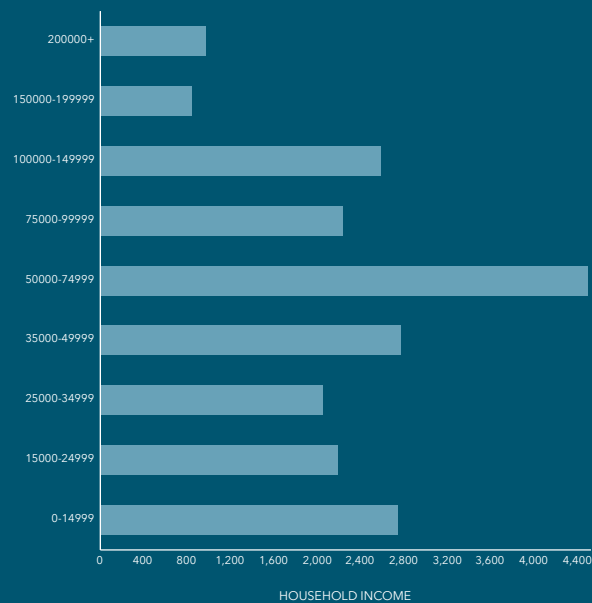
\$29,862

Per Capita Income



\$122,904

Median Net Worth



EMPLOYMENT



57.9%

White Collar



25.9%

Blue Collar



19.1%

Services

3.3%

Unemployment Rate

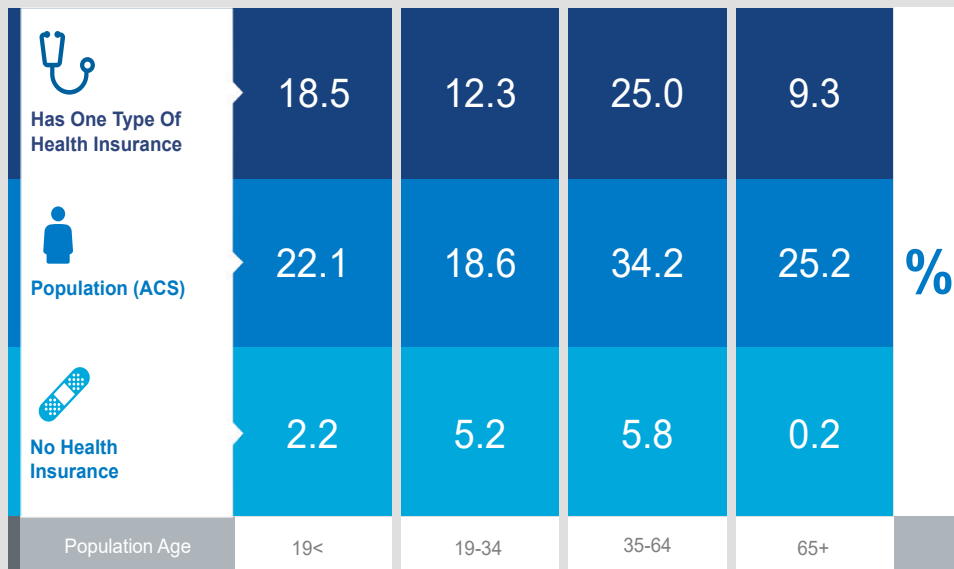
Source: This infographic contains data provided by Esri (2023, 2028). © 2024 Esri

DEMOGRAPHICS

Health Care & Insurance

Winter Haven City, FL
Geography: Place

This infographic provides a set of key demographic and health care indicators. [Learn more about this data](#)



Health Care Expenditure



\$3,834

Annual Health Insurance Expenditures



\$1,873

Medical Care



Medicare:
Population 65+

4,308

Medicare Only

2,393

Direct-Purch & Medicare

1,283

Employer & Medicare

1,452

Medicare & Medicaid

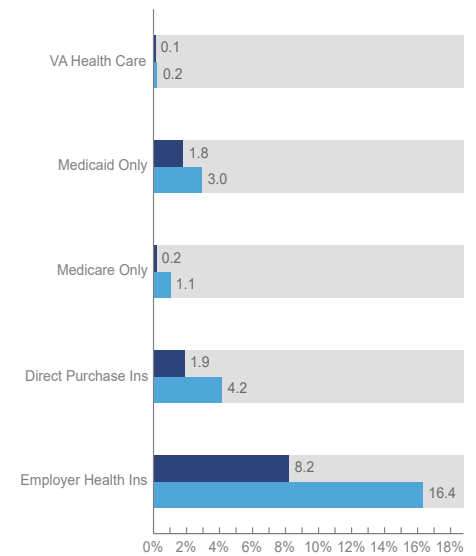
Health Care (Consumer Spending)

Annual Expenditure

Blue Cross/Blue Shield	\$994.4
Medicare Payments	\$928.0
Physician Services	\$208.1
Dental Services	\$335.0
Eyecare Services	\$68.1
Lab Tests/X-rays	\$60.6
Hospital Room & Hospital Service	\$189.2
Convalescent/Nursing Home Care	\$29.2

Health Insurance Coverage (ACS)

● Pop 19-34 ● Pop 35-64



Percent

Population



47,698

Civilian Noninstitutionalized Population (ACS)

Exercise (Percent of Adults)



46.3%

Exercise at home 2+ times per week



9.8%

Exercise at club 2+ times per week



Source: This infographic contains data provided by ACS (2017-2021), Esri-U.S. BLS (2023), Esri-MRI-Simmons (2023).

© 2024 Esri

CONTACT

KATHERINE SCATUORCHIO

Director

407.458.5412

Katherine.Scatuorchio@FranklinSt.com



20 N Orange Avenue | Suite 610

Orlando, FL 32801

407.458.5400

FSOI, LLC | A Licensed Florida Broker # CQ1048040

No warranty or representation, expressed or implied, is made to the accuracy of information contained herein, and same is submitted subject to errors, change of price, rental or other conditions, withdrawal without notice, and to any special listing conditions imposed by our principals.

550 POPE AVENUE, WINTER HAVEN, FL 33881