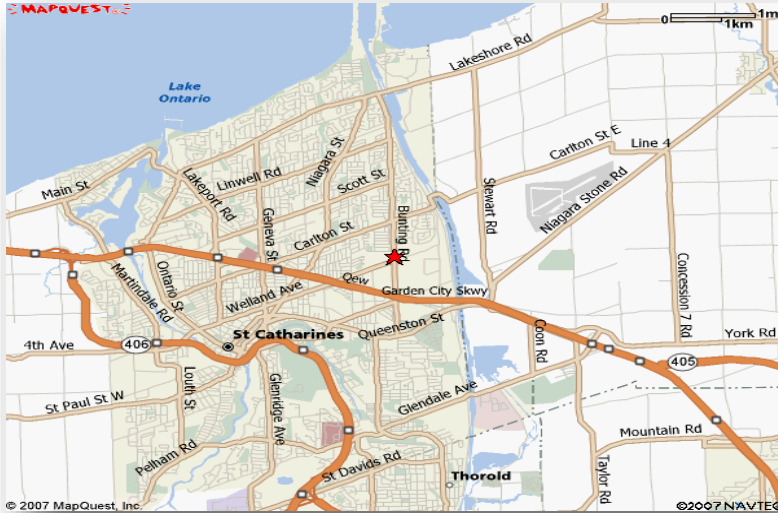


BRIARFIELD SHOPPING CENTRE 286 BUNTING RD. ST. CATHARINES, ONTARIO

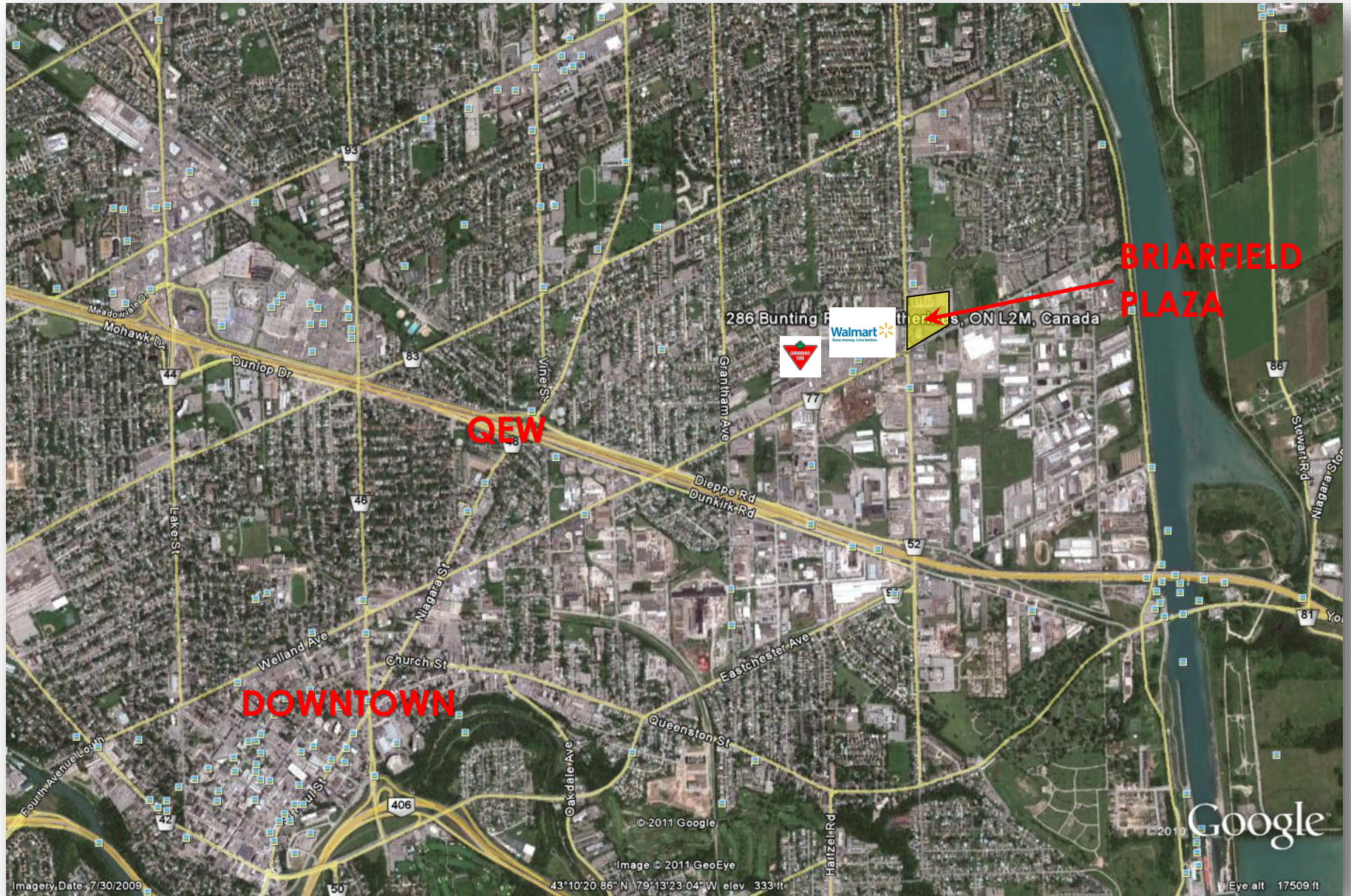


SITE STATISTICS

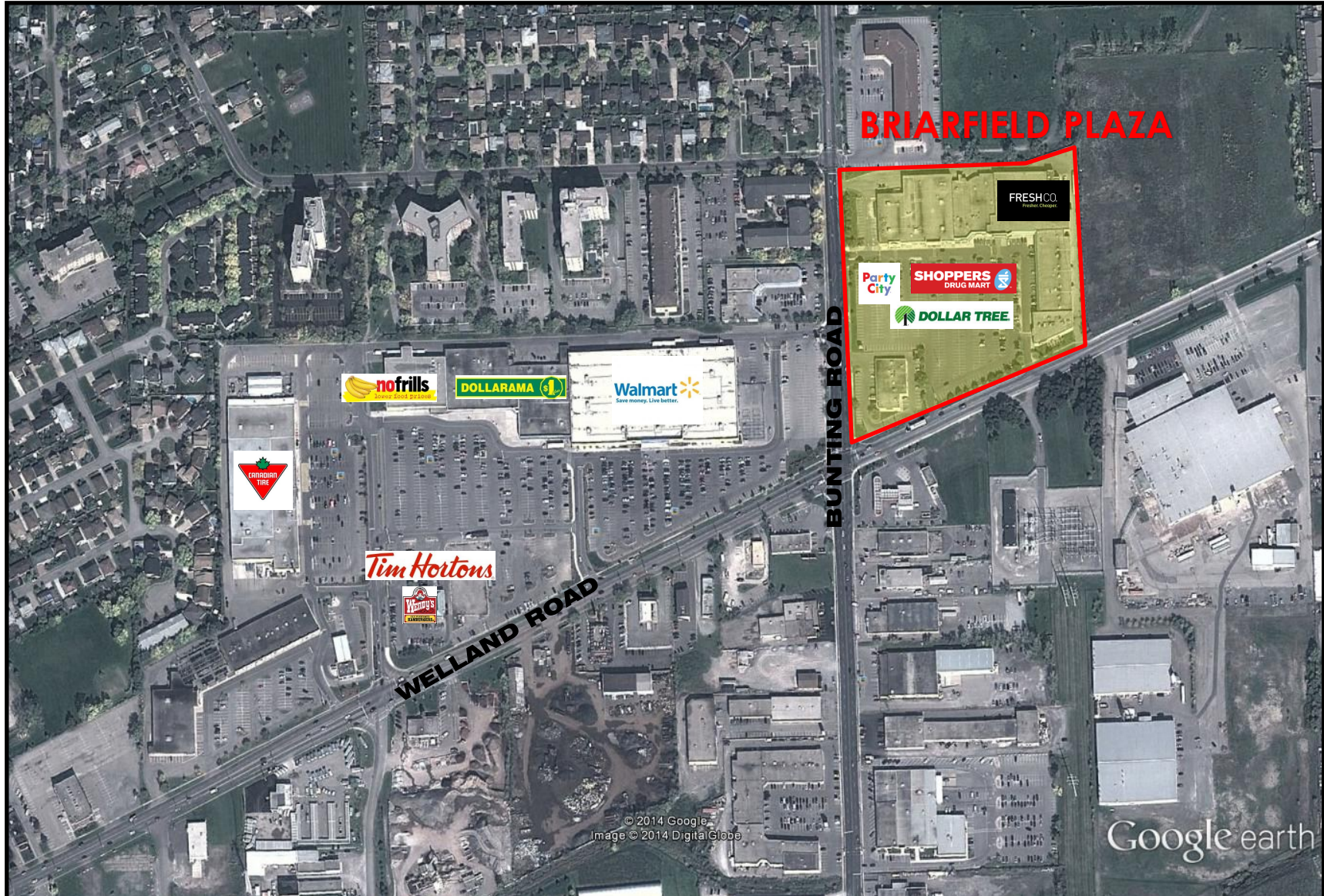
- GROSS LEASABLE AREA – 100,000 SQ. FT. +/-
- ANCHOR TENANTS – FRESHCO, SHOPPERS DRUG MART
- MAJOR TENANTS – PARTY CITY, DOLLAR TREE, MARK'S WORK WAREHOUSE
- PARKING COUNT – (4.77 PER 1,000 SF)
- FIVE (5) ENTRANCES/EXITS INTO THE PLAZA
- WAL-MART & CANADIAN TIRE SHADOW ANCHOR THE PLAZA
- LOCATED IN THE BUNTING/CARLTON COMMERCIAL AREA OF ST. CATHARINES
- POPULATION OF ST. CATHARINES = 145,000
- 50,000 PEOPLE IN A 3 KM TRADE AREA
- NEW PAD UNDER CONSTRUCTION - JOIN DQ GRILL N CHILL, THAI EXPRESS, FIREHOUSE SUBS AND TD ATM. 1 UNIT OF 800 SQ. FT. +/- AVAILABLE



BRIARFIELD SHOPPING CENTRE 286 BUNTING RD. ST. CATHARINES, ONTARIO



BRIARFIELD SHOPPING CENTRE 286 BUNTING RD. ST. CATHARINES, ONTARIO



BRIARFIELD SHOPPING CENTRE



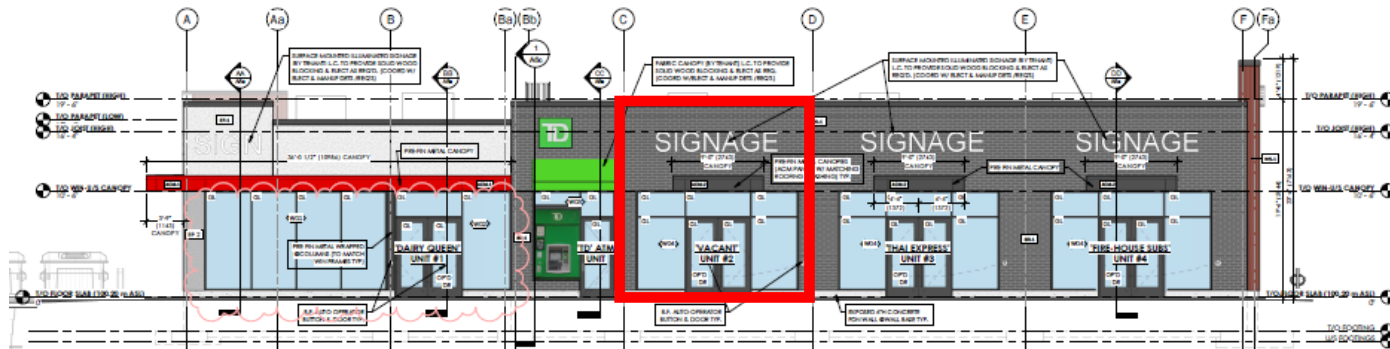
Available



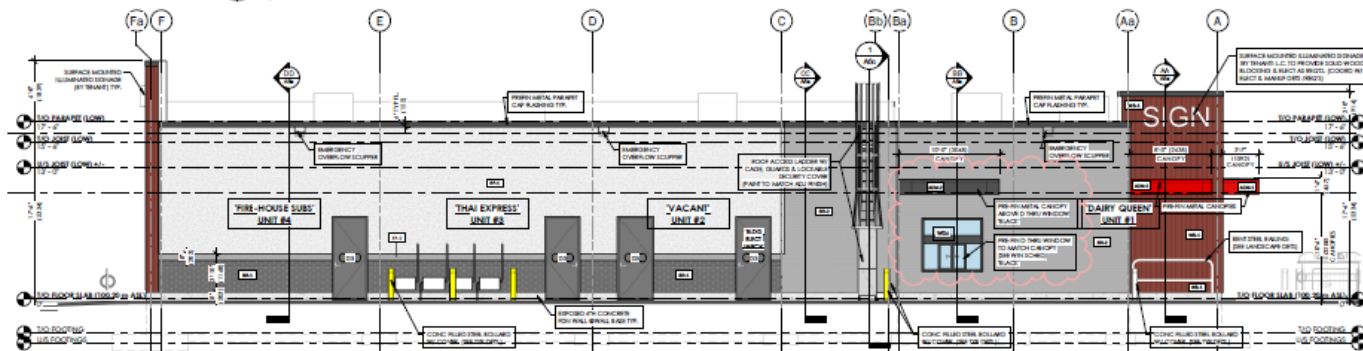
AVAILABLE



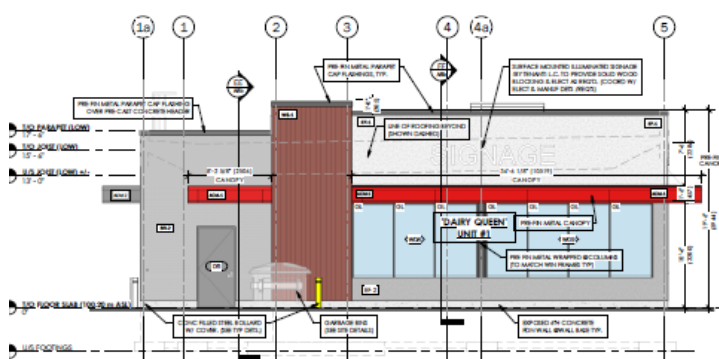
BRIARFIELD SHOPPING CENTRE 286 BUNTING RD. ST. CATHARINES, ONTARIO



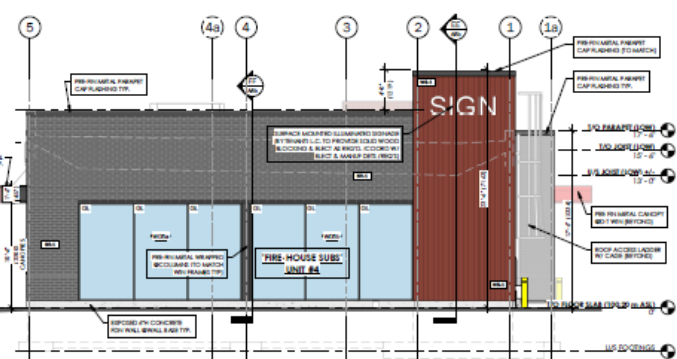
EL 1 FRONT ELEVATION (NORTH)
3/16" = 1'-0"



EL 2 REAR ELEVATION (SOUTH)
3/16" = 1'-0"



EL 3 LEFT ELEVATION (EAST)
3/16" = 1'-0"



EL 4 RIGHT ELEVATION (WEST)
3/16" = 1'-0"

**BRIARFIELD SHOPPING CENTRE
286 BUNTING RD. ST. CATHARINES, ONTARIO**

UNIT #102 - 780 SF





**BRIARFIELD SHOPPING CENTRE
286 BUNTING RD. ST. CATHARINES, ONTARIO**



LEASING INFORMATION

(416) 907-7549

BROKERS PROTECTED