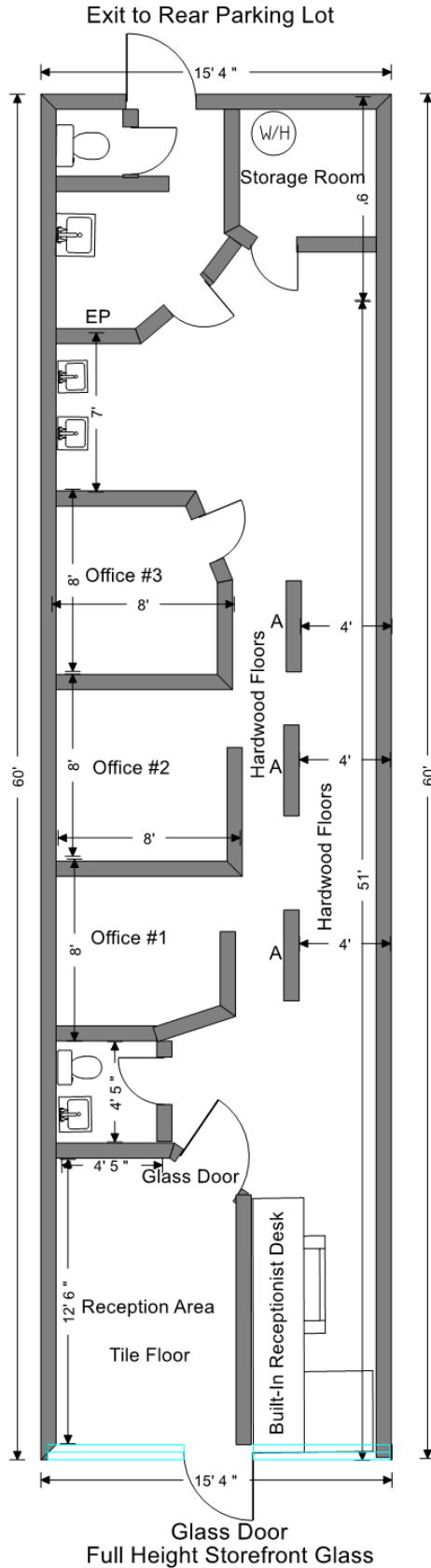


**BERRYESSA HILLS SHOPPING CENTER**  
**1154 N. Capitol Avenue | San Jose, CA 95132**  
**± 905 Square Feet (15' 4" W x 60' D)**



- Full Height Storefront Glass
  - Tile Entrance
  - Reception Area with Tile Floor
  - Built-In Receptionist Desk
  - 3 Offices
  - 1 ADA Restroom
  - 1 Non-ADA Restroom
  - 100% Drop T-Bar Ceiling 9' AFF
  - Recessed Can Lighting
  - Storage Room
  - Separate HVAC
  - Separate Electrical
  - Rear Door
  - No Fire Sprinklers
- W/H = Water Heater  
 EP = Electrical Panel  
 ( \_\_\_ Amp; 3 PH; 4W; 120/208V)  
 A = Full Height Walls  
 AFF = Above Finish Floor

Rev. 03/20/2026

© 2026 Biagini Properties, Inc. All rights reserved.

**All dimensions are approximate only.** The information contained herein has been given to us by the owner of the property or other sources we deem reliable. We have no reason to doubt its accuracy, but we do not guarantee it. All information should be verified prior to purchase or lease.



333 W. El Camino Real, Suite 240  
 Sunnyvale, CA 94087-1969  
 408) 331-2300 Telephone  
 408) 331-2301 Facsimile  
 www.BiaginiProperties.com