

---

# DOME BUILDINGS

THE QUADRANT, RICHMOND UPON THAMES, TW9 1BP



TO LET

# 1ST FLOOR, DOME BUILDINGS

THE QUADRANT, RICHMOND UPON THAMES TW9 1BP



AREA  
2,350 FT<sup>2</sup> (218M<sup>2</sup>)



LOCATION  
Town Centre



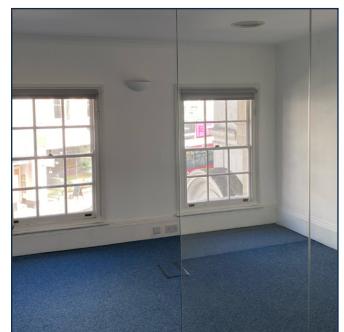
ROOMS  
Meeting Rooms  
Offices



SYSTEMS  
Air Conditioning

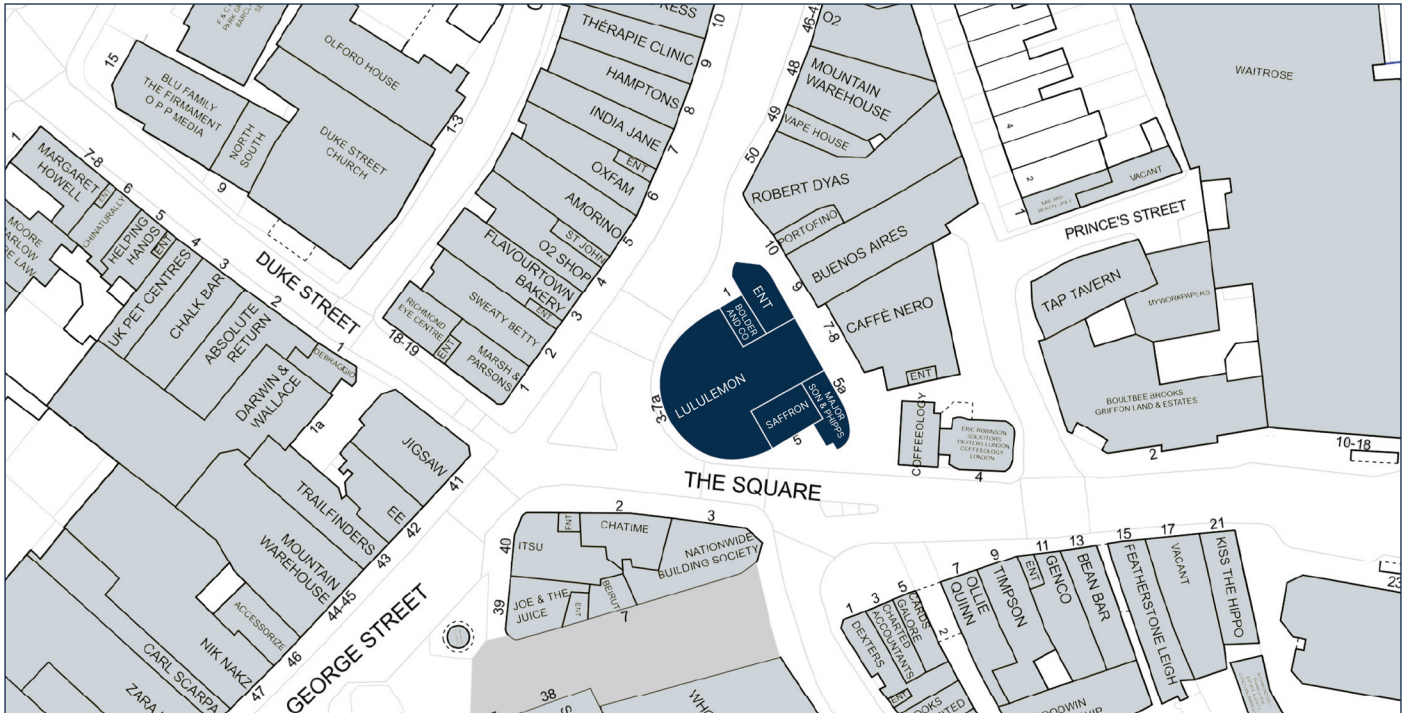
## DESCRIPTION

Quality office accommodation within one of Richmond's most prestigious and recognised buildings, comprising first floor, open-plan workspace with additional private offices/meeting rooms and a kitchen/breakout area. With an alternative 'plug and play' furniture package also offered, the premises are equipped with LED lighting and air conditioning and boast floor to ceiling front windows allowing for triple aspect views of Richmond's thriving town centre.



## LOCATION

Richmond is a highly affluent town located some 9 miles South West of Central London and has excellent rail links to London via the Underground and Overground lines as well as the Southwest Trains service, with a direct train to Waterloo in under 20 minutes. London and Heathrow are also easily accessible via the M3 and M4 motorways respectively. Moments from Richmond Green and surrounded by a host of major retailers such as Whole Foods, Waitrose, Joe and the Juice and Leon, this landmark building is positioned in the heart of the town at the major junction connecting Richmond's George Street and The Quadrant.



## FLOOR AREA

FLOOR	AREA SQFT	AREA SQM
First Floor	2,350	218
<b>TOTAL</b>	<b>2,350 sqft</b>	<b>218 sqm</b>

## AMENITIES

- Unique Town Centre Office
- Air Conditioning
- Floor-to-ceiling windows
- LED Lighting
- 'Plug & Play' Package
- Meeting Rooms / Offices

## RENT

Upon Application

## SERVICE CHARGE

Upon Application

## RATES PAYABLE

To Be Assessed

## LEASE

A new fully repairing and insuring lease will be granted for a term to be agreed, subject to periodic upward only rent reviews.

## VAT

VAT is Applicable

## EPC RATING

Available on Application

## VIEWINGS

Viewing strictly by prior appointment with the agent.

## LEGAL COSTS

Each party to be responsible for their own legal costs.

**TO LET**

**3RD FLOOR, DOME BUILDINGS**  
 THE QUADRANT, RICHMOND UPON THAMES TW9 1BP



 **AREA**  
 1,497 sq ft

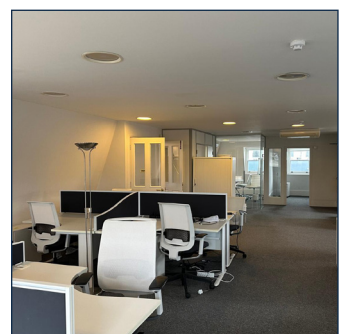
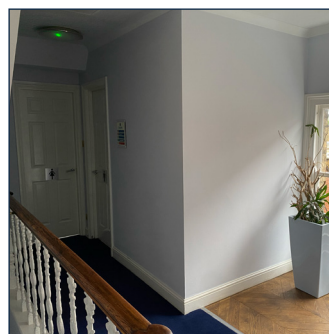
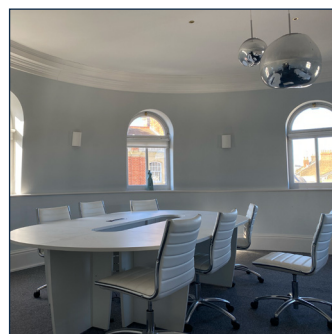
 **LOCATION**  
 Town Centre

 **ROOMS**  
 Dome Board Room

 **SYSTEMS**  
 Air Conditioning

**DESCRIPTION**

Quality office accommodation within one of Richmond’s most prestigious and recognised buildings, comprising third floor, open-plan workspace with a private meeting room and the jewel in the crown board room at the top of the building within the famous dome itself, boasting 360 degree views. With an alternative ‘plug and play’ furniture package also offered, the premises are equipped with LED lighting, intercom entry system and air conditioning.



**LOCATION**

Richmond is a highly affluent town located some 9 miles South West of Central London and has excellent rail links to London via the Underground and Overground lines as well as the Southwest Trains service, with a direct train to Waterloo in under 20 minutes. London and Heathrow are also easily accessible via the M3 and M4 motorways respectively. Moments from Richmond Green and surrounded by a host of major retailers such as Whole Foods, Waitrose, Joe and the Juice and Leon, this landmark building is positioned in the heart of the town at the major junction connecting Richmond's George Street and The Quadrant.



**FLOOR AREA**

FLOOR	AREA SQFT	AREA SQM
First Floor	2,350	218
<b>TOTAL</b>	<b>1,497 sqft</b>	<b>139 sqm</b>

**AMENITIES**

- Unique Town Centre Office
- Air Conditioning
- Floor-to-ceiling windows
- LED Lighting
- 'Plug & Play' Package
- Separate Office

**RENT**

Upon Application

**SERVICE CHARGE**

Upon Application

**RATES PAYABLE**

To Be Assessed

**LEASE**

A new fully repairing and insuring lease will be granted for a term to be agreed, subject to periodic upward only rent reviews.

**VAT**

VAT is Applicable

**EPC RATING**

Available on Application

**VIEWINGS**

Viewing strictly by prior appointment with the agent.

**LEGAL COSTS**

Each party to be responsible for their own legal costs.