

RETAIL UNIT FOR LEASE

114 Lakeshore Rd E

Mississauga, ON



Property Detail



Located in the heart of Port Credit, a distinct and historic lakeside village and business district in south Mississauga.



A ground unit fronting Lakeshore with no basement for efficient operations, ample surface and street parking, and high-visibility frontage in this vibrant waterfront community.



Steps from the Port Credit GO Station, it's surrounded by everyday essentials including Loblaws, Shoppers Drug Mart, Harvey's, Farm Boy, Walmart, and Starbucks.



Benefiting from residential growth along Lakeshore Road that drives consistent foot traffic and consumer demand—ideal for food, service, or specialty retail tenants.



High visibility and strong traffic counts, steps from the intersection of Hurontario Street and Lakeshore Road East, with a daily traffic count of 48,127 vehicles.

Retail Unit

114-5

Unit Size

1,090 Sq. Ft.

Parking

Surface & Street

Net Rent

Contact Listing Agent

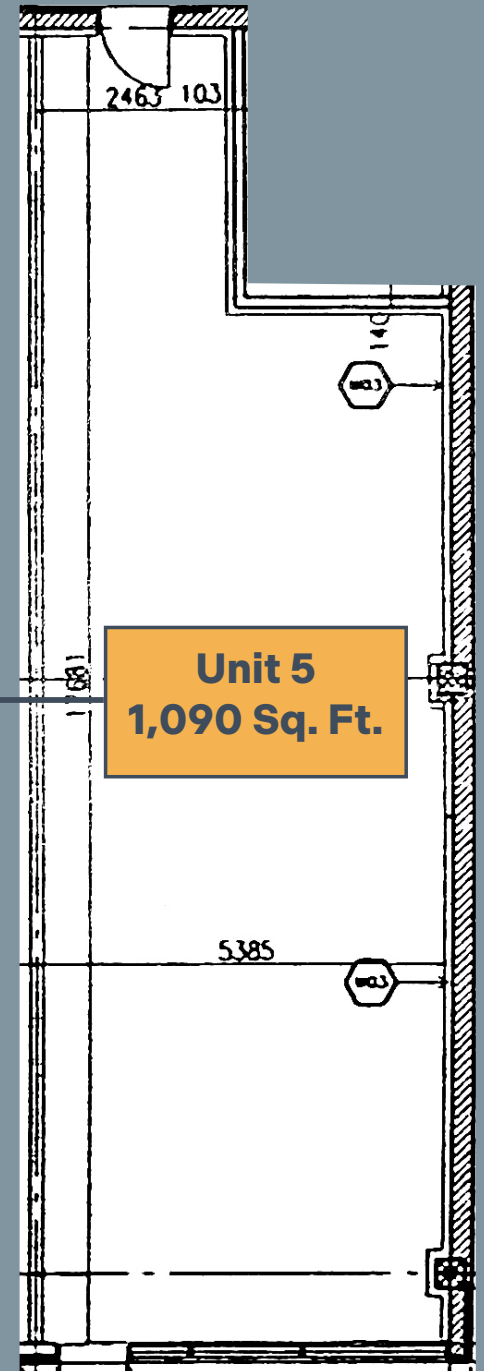
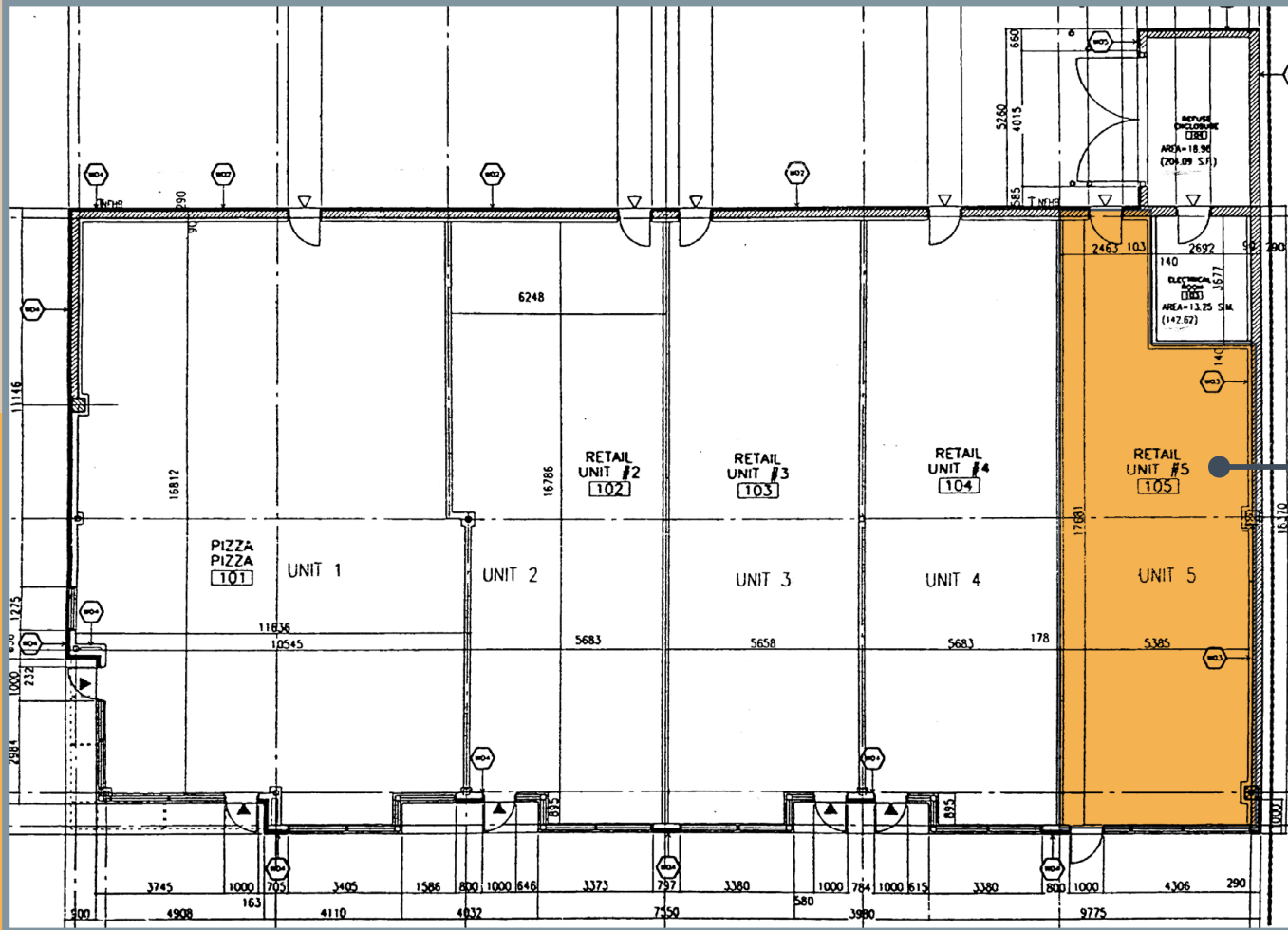
TMI (2024)

\$20.38 Per Sq. Ft.

Possession Date

June 1st, 2026

Floor Plan



Site Photo



Subject Unit



Rear Surface Parking

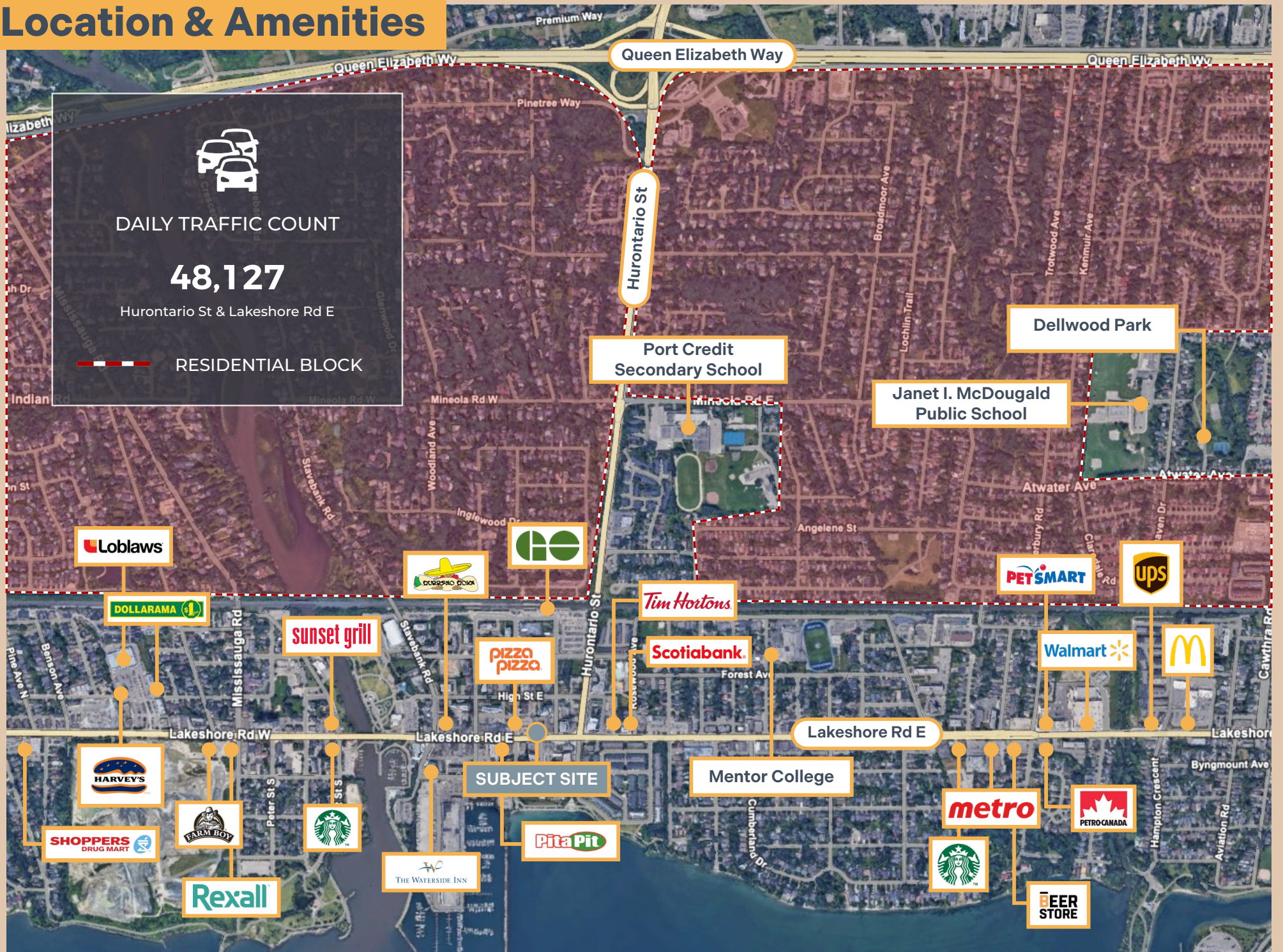


Rear Unit Access

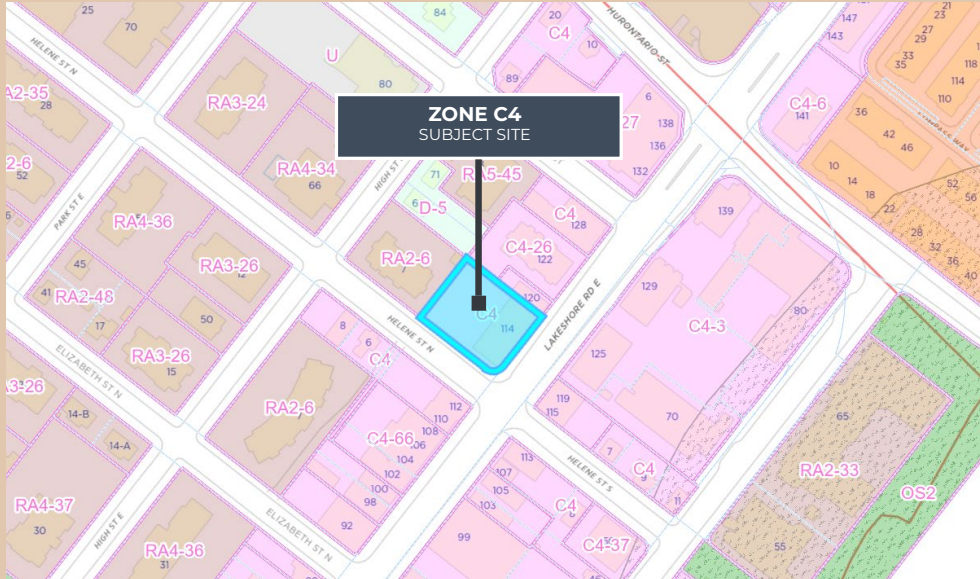


Lakeshore Rd E

Location & Amenities



Permitted Uses & Zoning



PERMITTED COMMERCIAL USES INCLUDING, BUT NOT LIMITED TO:

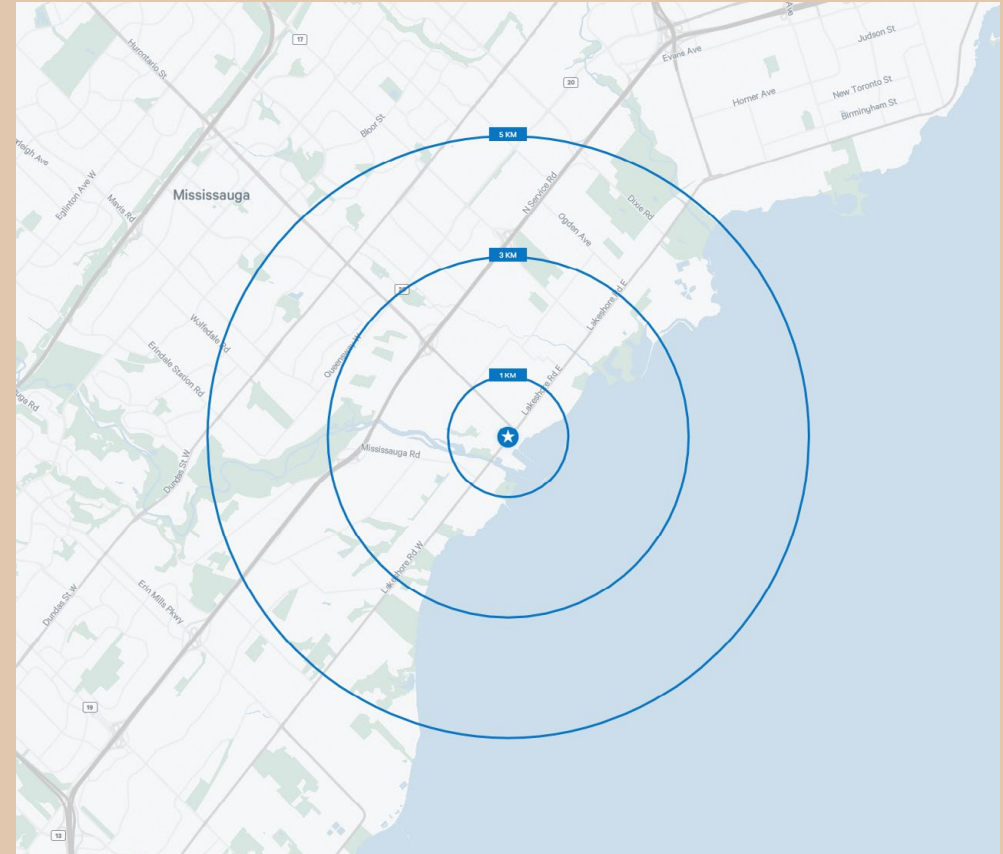
- Retail store
- Restaurant
- Convenience Restaurant
- Take-out Restaurant
- Veterinary Clinic
- Animal Care Establishment
- Funeral Establishment (2)
- Service Establishment
- Commercial School
- Financial Institution (1)
- Medical Office
- Office
- Overnight Accommodation
- Banquet Hall/Conference Centre/ Convention Centre
- Entertainment Establishment
- Private Club
- University/College
- Parking Lot
- Apartment

CLICK TO VIEW
ZONE C4
PERMITTED USES

CLICK TO VIEW
CITY OF MISSISSAUGA
ZONING DEFINITIONS

*BUYERS/TENANTS ARE RESPONSIBLE FOR CONFIRMING ZONING AND PERMITTED USES.

Demographics



	TOTAL POPULATION 2025	POPULATION GROWTH 2025-2030	DAYTIME POPULATION 2025	HOUSEHOLD INCOME 2025
1 KM	9,851	18.6%	10,199	\$159,502
3 KM	48,166	5.4%	40,272	\$174,118
5 KM	133,207	1.7%	120,051	\$161,586

FOR MORE INFORMATION, PLEASE CONTACT:

Nicholas Regan*

Senior Sales Associate
416 801 1658
nicholas.regan@cbre.com

Adam Occhipinti*

Vice President
416 798 6265
adam.occhipinti@cbre.com

Matthew Pieszchala*

Vice President
905 234 0376
matthew.pieszchala@cbre.com

Karlyn Knafo*

Associate Vice President
905 234 0381
karlyn.knafo@cbre.com

CBRE Limited, Real Estate Brokerage | 5935 Airport Road, Suite 700, Mississauga, ON, L4V 1W5 | *Sales Representative

This disclaimer shall apply to CBRE Limited, Real Estate Brokerage, and to all other divisions of the Corporation ("CBRE"). The information set out herein, including, without limitation, any projections, images, opinions, assumptions and estimates obtained from third parties (the "Information") has not been verified by CBRE, and CBRE does not represent, warrant or guarantee the accuracy, correctness and completeness of the Information. CBRE does not accept or assume any responsibility or liability, direct or consequential, for the Information or the recipient's reliance upon the Information. The recipient of the Information should take such steps as the recipient may deem necessary to verify the Information prior to placing any reliance upon the Information. The Information may change and any property described in the Information may be withdrawn from the market at any time without notice or obligation to the recipient from CBRE. CBRE and the CBRE logo are the service marks of CBRE Limited and/or its affiliated or related companies in other countries. All other marks displayed on this document are the property of their respective owners. All Rights Reserved. Mapping Sources: Canadian Mapping Services canadamapping@cbre.com; DMTI Spatial, Environics Analytics, Microsoft Bing, Google Earth. All rates, measurements, plans and specifications subject to change E. & O. E

CBRE

SUBURBAN RETAIL TEAM