



OFFICE SPACE FOR LEASE

LAGUNA HILLS OFFICE PARK

23175 La Cadena Drive, Suite B • Laguna Hills, California



Exclusively listed by:

Jake Fischbeck

Vice President
BRE# 02090693

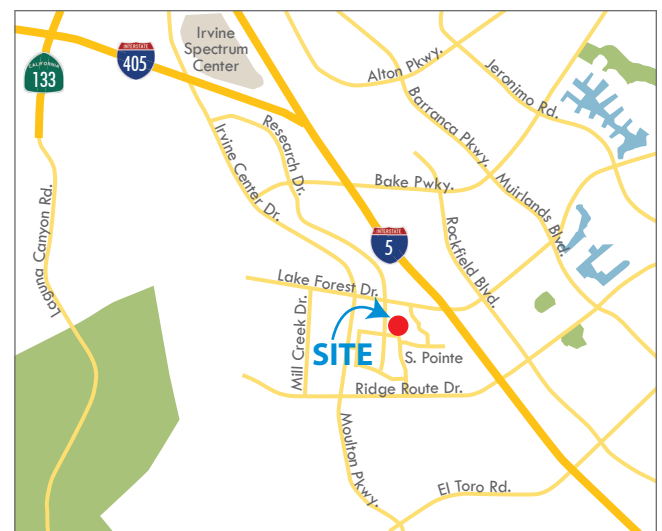
949.790.3118

jfischbeck@leeirvine.com

Lee & Associates - Irvine
9838 Research Drive
Irvine, CA 92618

PROPERTY FEATURES

- Suite B: ±1,450 SF
- High image office condominium for lease
- 2 private offices, reception area, open work area, kitchen, storage room and restroom
- Close proximity to Irvine Spectrum Entertainment Center
- Immediate access to the 5, 405 & 133 Freeways
- Ample amount of parking
- Professionally landscaped
- **LEASE RATE: \$2.20 FSG**
- Call to show



LEE & ASSOCIATES

COMMERCIAL REAL ESTATE SERVICES

No warranty or representation is made to the accuracy of the foregoing information. Terms of sale or lease and availability are subject to change or withdrawal without notice.



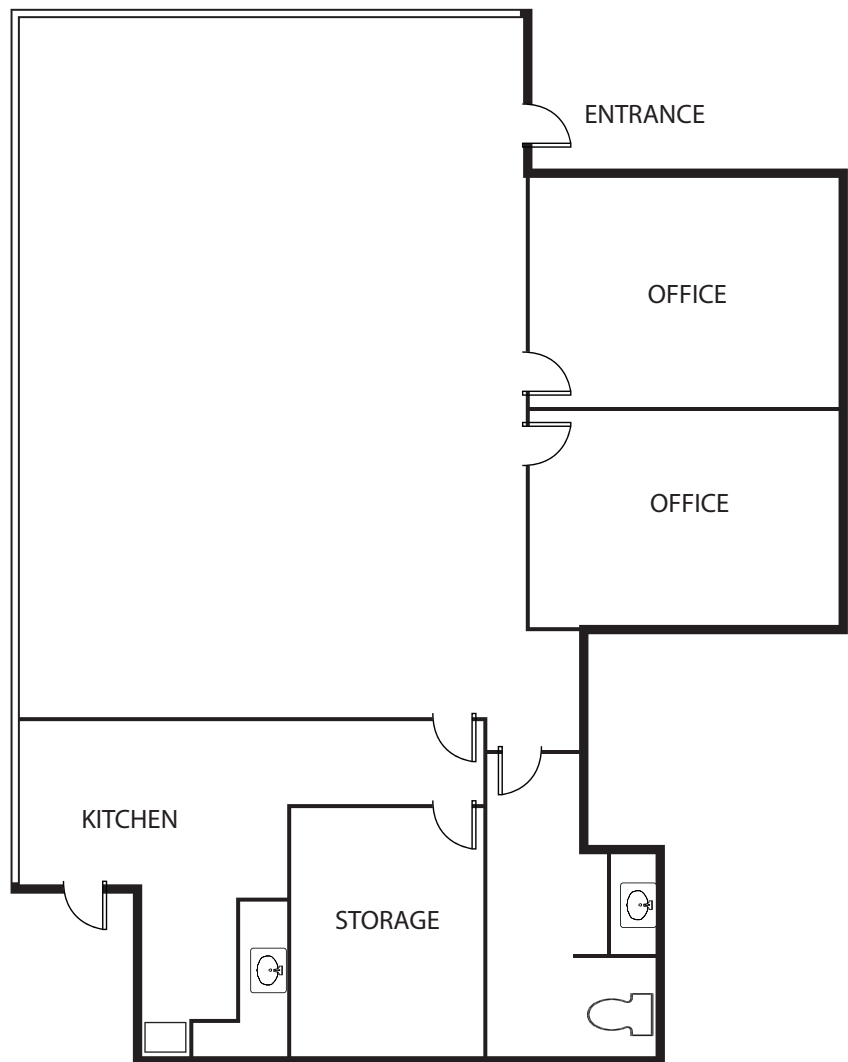
OFFICE SPACE FOR LEASE

LAGUNA HILLS OFFICE PARK

23175 La Cadena Drive, Suite B • Laguna Hills, California



SUITE B - 1,450 SQ. FT.



Exclusively listed by:

Jake Fischbeck

Vice President

BRE# 02090693

949.790.3118

jfischbeck@leeirvine.com

Lee & Associates - Irvine

9838 Research Drive

Irvine, CA 92618