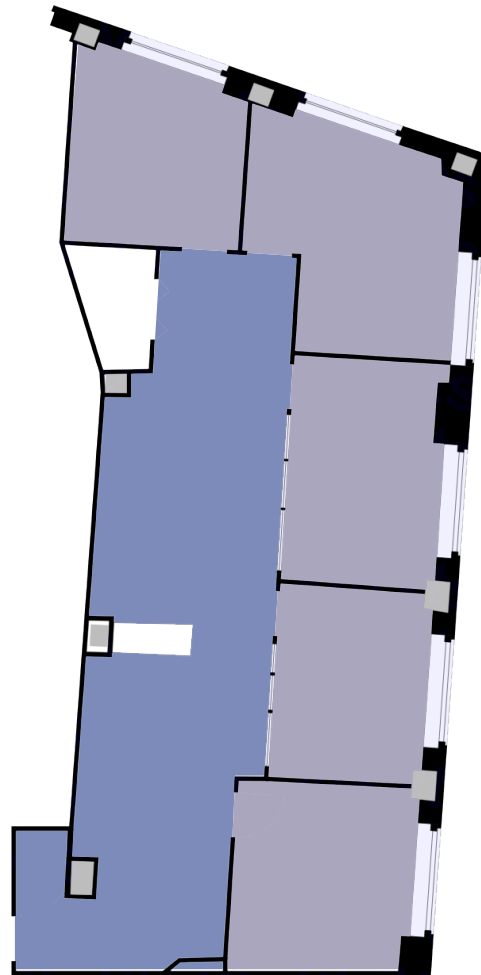


11  
BEACON  
STREET



# Floor Plan

**Partial 3<sup>rd</sup> Floor**  
Suite 305



## 3<sup>rd</sup> Floor

Suite 305 | 1,604 SF

## Key

■ Open Area

■ Offices



Robert M. Elmer  
617.899.0569  
relmer@lee-associates.com

Ty Janney  
617.283.3126  
tjanney@lee-associates.com



Tim Ferguson  
508.887.1501  
tferguson@synergyboston.com