

6005

Shellmound St.

EMERYVILLE, CA



PLUG & PLAY
OFFICE SPACE



5,481 SF



AVAILABLE
NOW



PRICING
\$3.50 IG



CBRE



6005

FLOOR PLAN

6005
Shellmound St.
EMERYVILLE, CA

5,481 SF



Partial Ground Floor



High Ceilings



Break Room / Kitchen



2 Conference Rooms



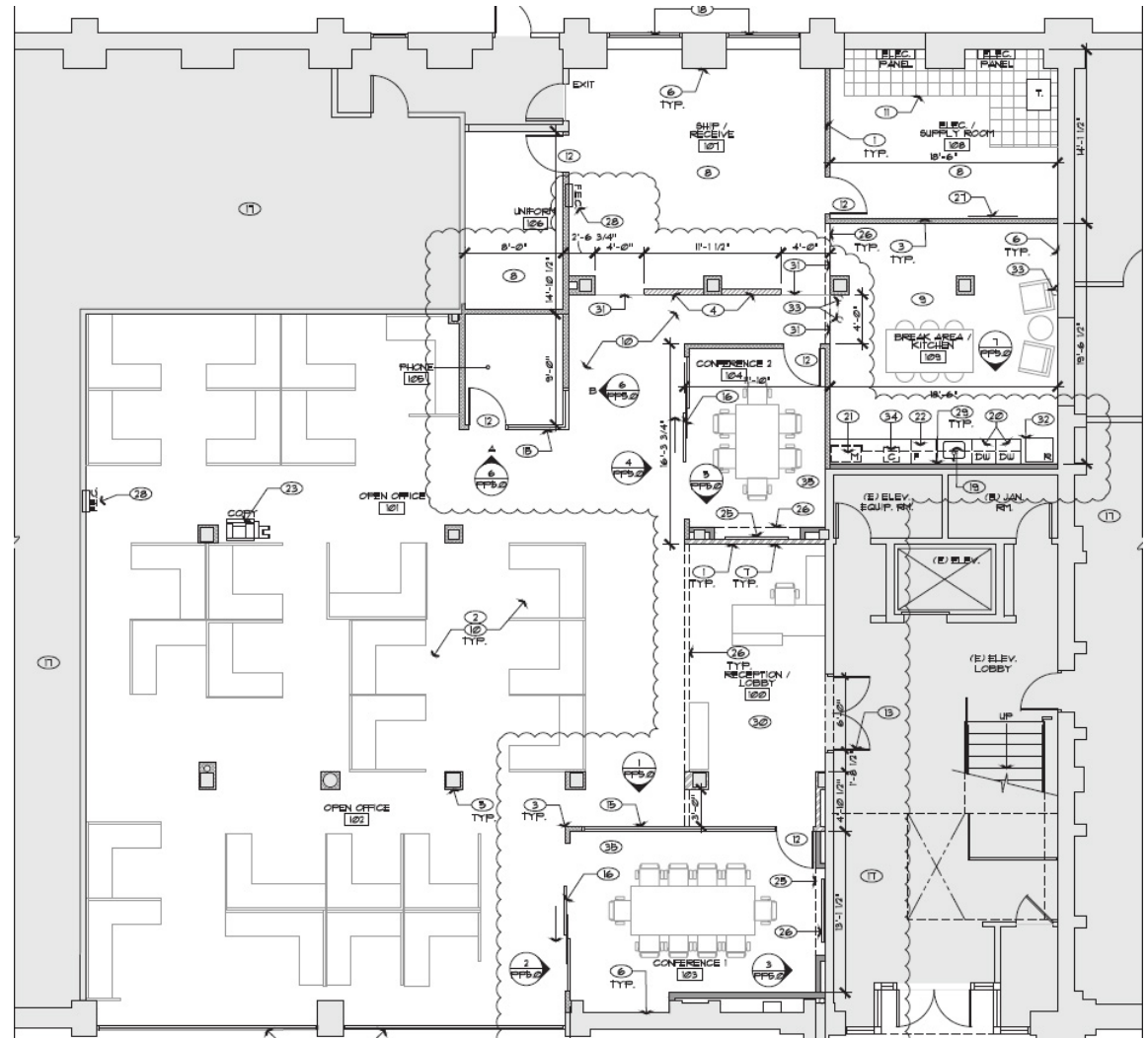
1 Private Office / Huddle Room



Storage / Electrical Room



20+ Existing Workstations



EMERYVILLE AMENITY MAP

6005
Shellmound St.
EMERYVILLE, CA

RESTAURANTS

PUBLIC MARKET

PUBLIC MARKET

RESTAURANTS

BAY STREET

Located in the Heart of Emeryville's Public Market

On-Site and Surrounding Retail Amenities

Convenient Parking located Nearby

Access to Freeways, BART, Amtrak

EAST BAY BRIDGE CENTER



6005

Shellmound St.

EMERYVILLE, CA



Contact for more information

MARK J. KOL

Executive Vice President

Lic. 01251158

+1 510 874 1992

mark.kol@cbre.com

MIKE RAFFETTO

Senior vice president

Lic. 01201289

+1 510 874 1994

mike.raffetto@cbre.com

MONICA CLARKE

Sales Assistant

Lic. 01221955

+1 510 874 1906

monica.clarke@cbre.com

1111 BROADWAY, SUITE 1850

OAKLAND, CA 94607

© 2024 CBRE, Inc. All rights reserved. This information has been obtained from sources believed reliable, but has not been verified for accuracy or completeness. You should conduct a careful, independent investigation of the property and verify all information. Any reliance on this information is solely at your own risk. CBRE and the CBRE logo are service marks of CBRE, Inc. All other marks displayed on this document are the property of their respective owners, and the use of such logos does not imply any affiliation with or endorsement of CBRE. Photos herein are the property of their respective owners. Use of these images without the express written consent of the owner is prohibited. PMStudio_October2024

CBRE