

The logo consists of a large, stylized 'H' in a gold color positioned above a large, white 'R'.

HIDDEN RIVER



NOW LEASING

Tampa's Premier
Office Campus



HIDDEN RIVER CORPORATE PARK | TAMPA, FL 33637

CBRE

Connecting With a Landlord that is Your Partner



On-Site Grab & Go



Nearby Nature Trails

ABUNDANT AMENITIES



On-Site Ownership/ Management Office



On-Site Car Detailing Service

You May Have Never Experienced An Owner Like This

Experience Ownership that is passionate about their buildings. They work continuously to improve their buildings aesthetically and functionally.

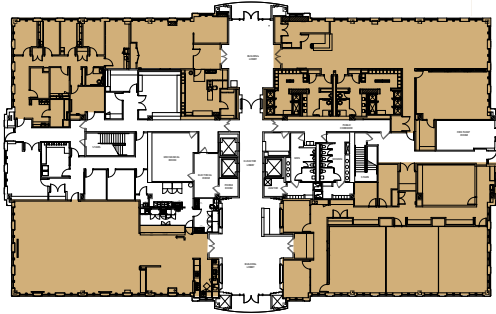
Our commitment for each Hidden River building is to bring a focus to improvement, a respect for quality design and craftsmanship, and quality customer service coupled with responsive management.

Farley White is committed to long term relationships by working with their customers and brokers to make workplace environments that are distinctive and productive. Our management team is engaged from start to finish in every lease transaction.

HIDDEN RIVER I

8800 Grand Oak Circle
Tampa, FL 33637

SUITE 140 | 3,678 SF



SUITE 160

4,454 SF
(Fitness/Wellness Center)

SUITE 100

4,839 SF
(Cafe Area)

SUITE 120

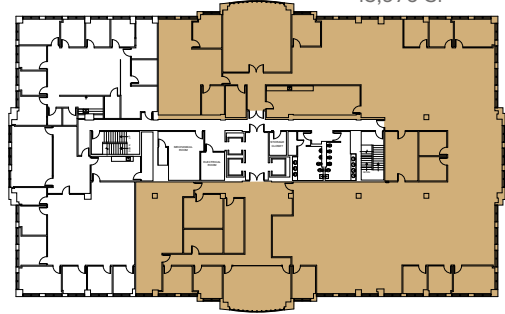
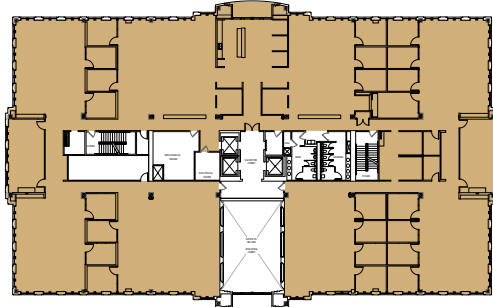
5,022 SF
(Conference/Training Area)

SUITE 600

15,976 SF

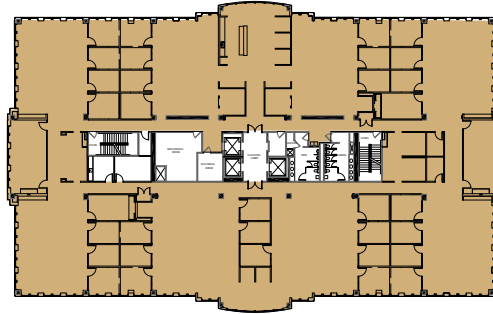
SUITE 200

22,106 SF



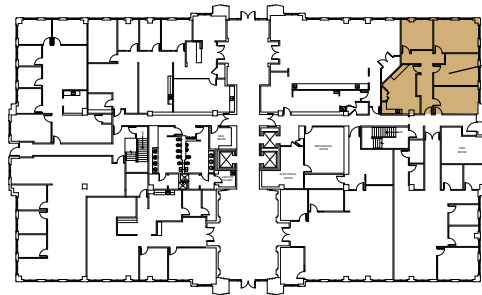
SUITE 300

24,165 SF



HIDDEN RIVER II

14025 Riveredge Drive
Tampa, FL 33637



SUITE 130

1,723 SF

HIDDEN RIVER III

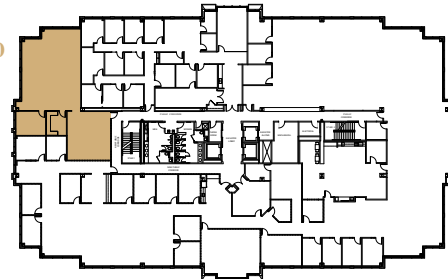
14055 Riveredge Drive
Tampa, FL 33637

SUITE 460

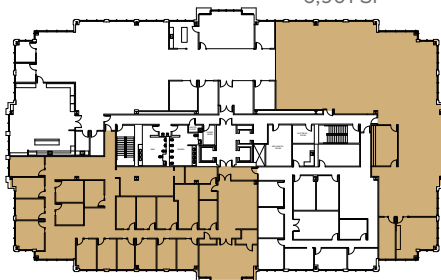
2,583 SF

SUITE 360

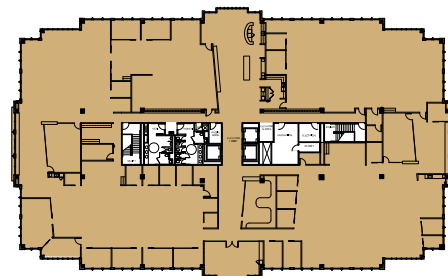
6,901 SF



SUITE 320
7,270 SF



SUITE 600
26,141 SF



HIDDEN RIVER III
14055 Riveredge Drive

HIDDEN RIVER II
14025 Riveredge Drive

HIDDEN RIVER I
8800 Grand Oak Circle



VIEW TOUR

Experience the Difference

EXCEPTIONAL QUALITY CLASS A OFFICE PARK

- Highest quality master-planned office park - considered one of the top corporate parks in Tampa
- Recognized with NAIOP's Design Honor Award for exceptional design and development

A TRUSTED LOCATION FOR SUCCESS

- 15 minutes to downtown Tampa
- 7 minutes away from University of South Florida
- Immediate proximity to all major interstate systems
- Two million people live within a 15 mile radius
- Hidden River Corporate Park includes 513 master-planned acres along the Hillsborough River and features canopied walking/jogging paths surrounded by oak trees.

**Immerse
in the
Experience**

For More Information

ROXANNE KEMPH
Senior Vice President
T +1 813 787 1068
roxanne.kemph@cbre.com

KELLEY MATHESON
Senior Vice President
T +1 813 273 8489
kelley.matheson@cbre.com

DREW SWITALSKI
Associate
T +1 813 273 8480
drew.switalski@cbre.com

www.cbre.us/hiddenrivercorporate

CBRE, Inc. | Licensed Real Estate Broker

CBRE

FARLEY | WHITE
INTERESTS

© 2025 CBRE, Inc. This information has been obtained from sources believed reliable. We have not verified it and make no guarantee, warranty or representation about it. Any projections, opinions, assumptions or estimates used are for example only and do not represent the current or future performance of the property. You and your advisors should conduct a careful, independent investigation of the property to determine to your satisfaction the suitability of the property for your needs. Photos herein are the property of their respective owners and use of these images without the express written consent of the owner is prohibited. CBRE and the CBRE logo are service marks of CBRE, Inc. and/or its affiliated or related companies in the United States and other countries. All other marks displayed on this document are the property of their respective owners.