

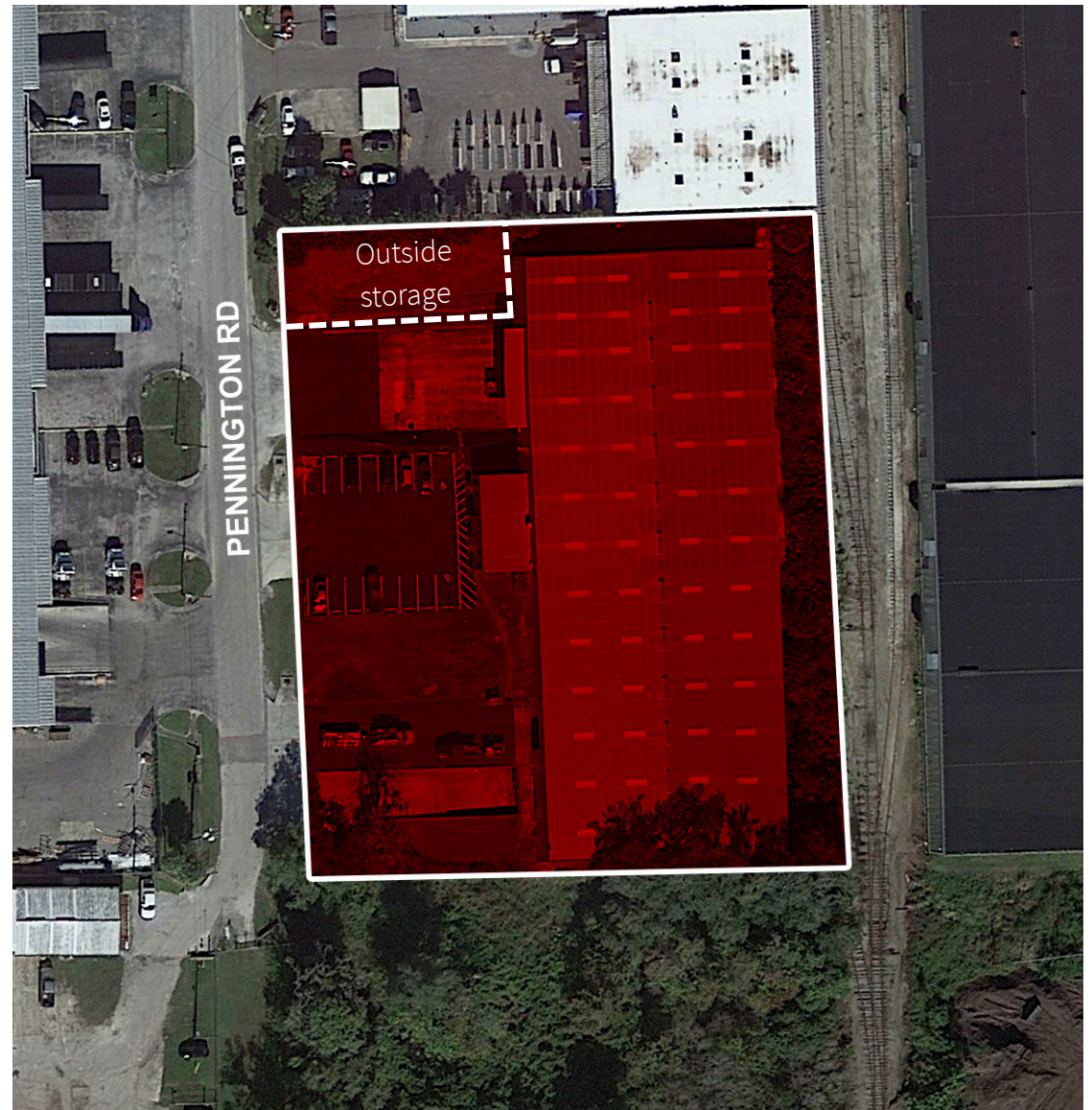


For lease

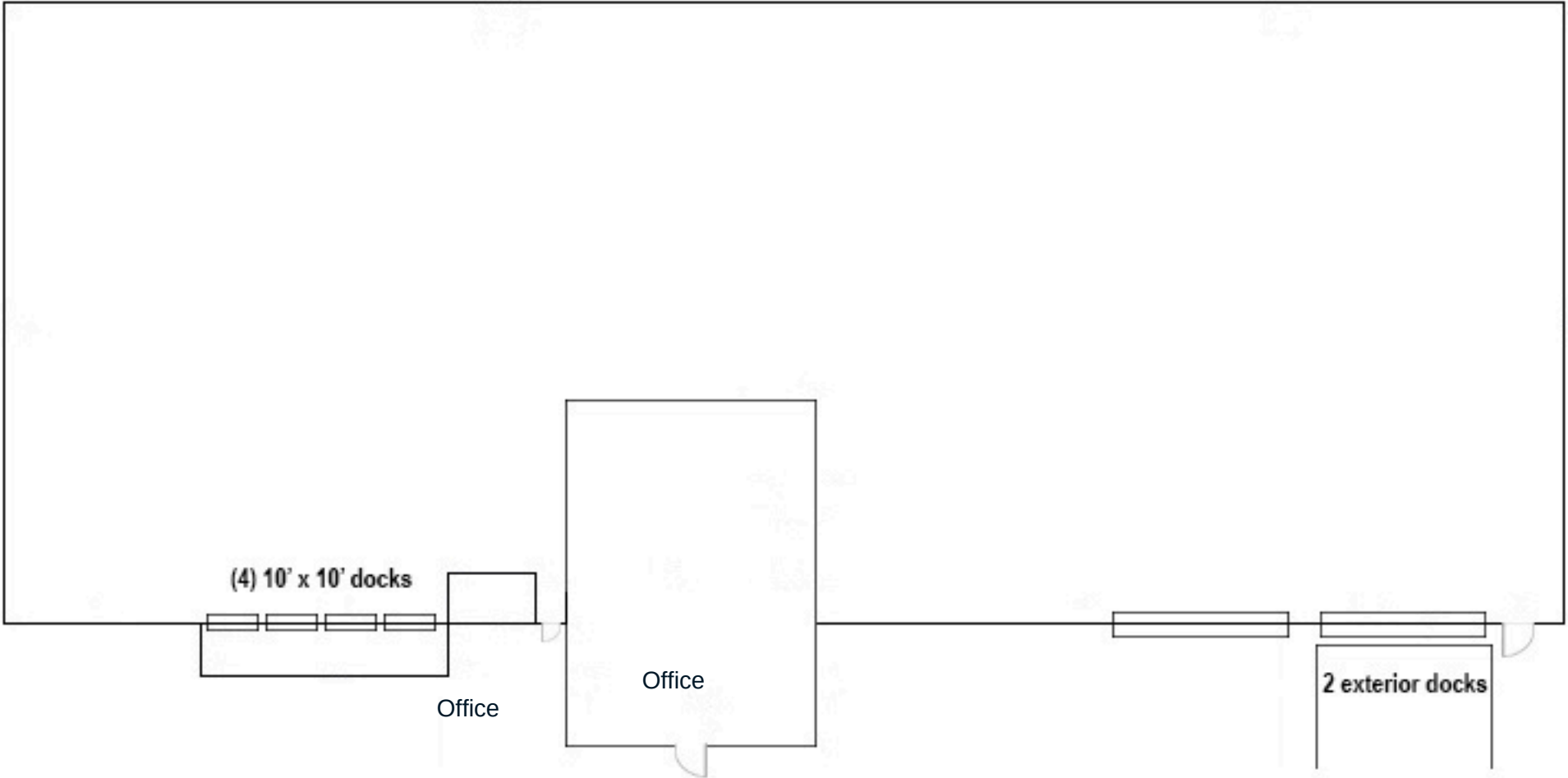
3003 Pennington Road, Orlando, FL 32804
37,767± SF industrial building

Property details

- 37,767 s.f.± free-standing warehouse
- 3,200 s.f.± of office
- 16' - 22' clear height
- Four 10' x 10' dock doors with edge of dock
- One 15.5' x 15' grade door
- One 15.5' x 11.5' grade door and loading platform with two exterior docks
- 16 parking spaces
- Metal construction
- Built in 1968
- 1.93 acres
- Zoned ORL-I-G/W, City of Orlando
- Available October 1, 2026
- Please call for pricing



Building plan



Property photos



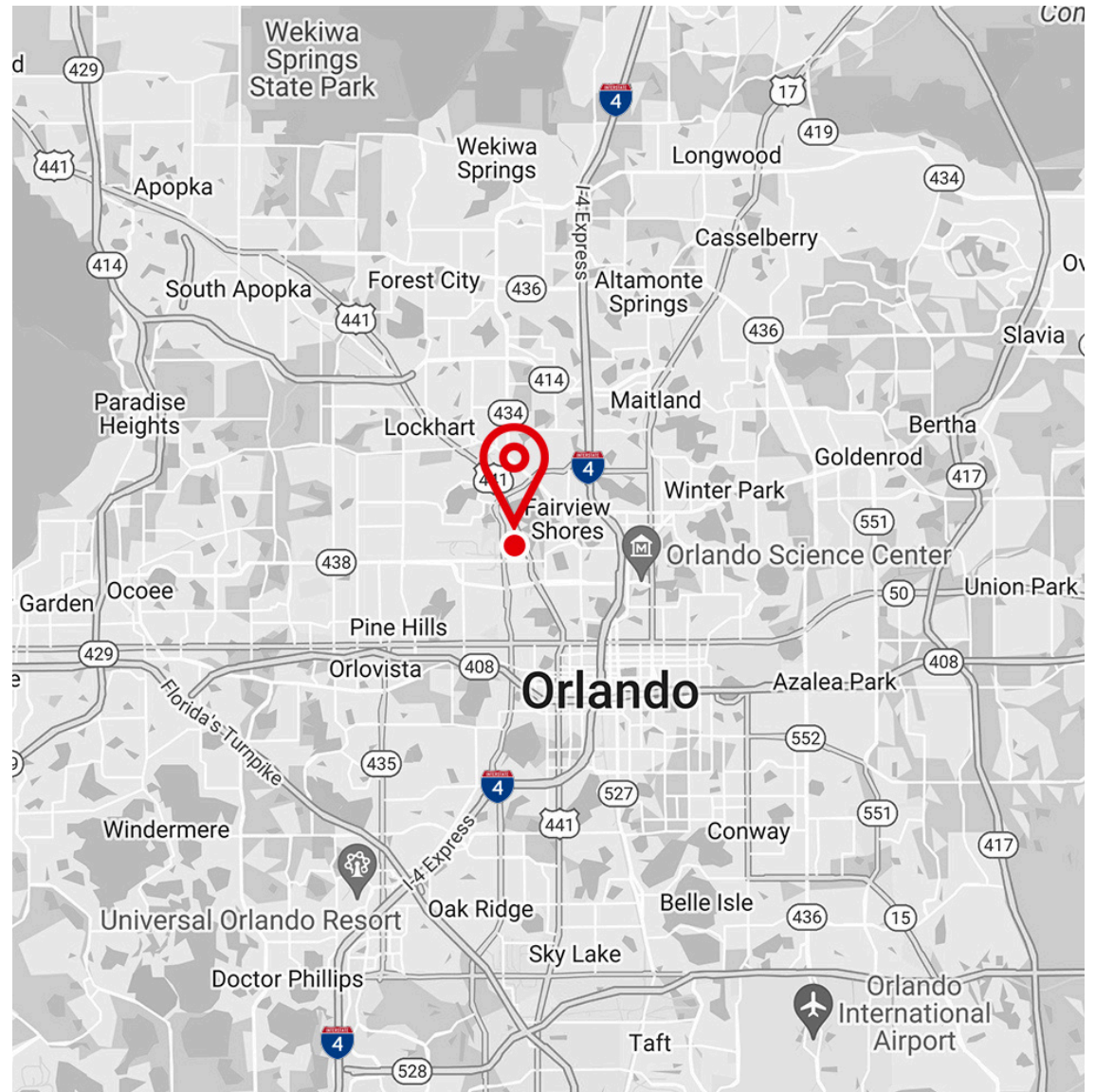
Location overview

Location

- Between US 441 and John Young Pkwy
- Minutes from Silver Star Rd, Lee Rd and Colonial Dr
- Less than 10 minutes to Interstate 4 and State Road 408

Points of Interest within 10 miles

- Downtown Orlando
- AdventHealth Orlando
- Orlando Science Center
- Orlando Museum of Art
- The Country Club of Orlando
- Central Florida Fairgrounds
- Downtown Winter Park
- Orlando Executive Airport
- Camping World Stadium
- Rollins College





JLL

Bobby Isola, SIOR,CCIM
Executive Managing Director
Bobby.Isola@jll.com
+1 321 239 7918

Cameron Montgomery
Executive Vice President
Cameron.Montgomery@jll.com
+1 407 473 4906

Matt Sullivan, SIOR,CCIM
Executive Managing Director
Matt.Sullivan@jll.com
+1 407 930 1802