

AVAILABLE

Glenfield Business Center

2501-2555 Mechanicsville Turnpike, Richmond, VA 23223



Exclusive Agent:

CLIFF PORTER, CCIM, SIOR
(804) 521-1442
cliff@porterinc.com

ROBERT PORTER III
(804) 521-1455
rep3@porterinc.com

4801 Radford Avenue | P.O. Box 6482
Richmond, VA 23230
www.porterinc.com
804-353-7994

PORTER
R E A L T Y

CORFAC
INTERNATIONAL

SIOR

CCIM

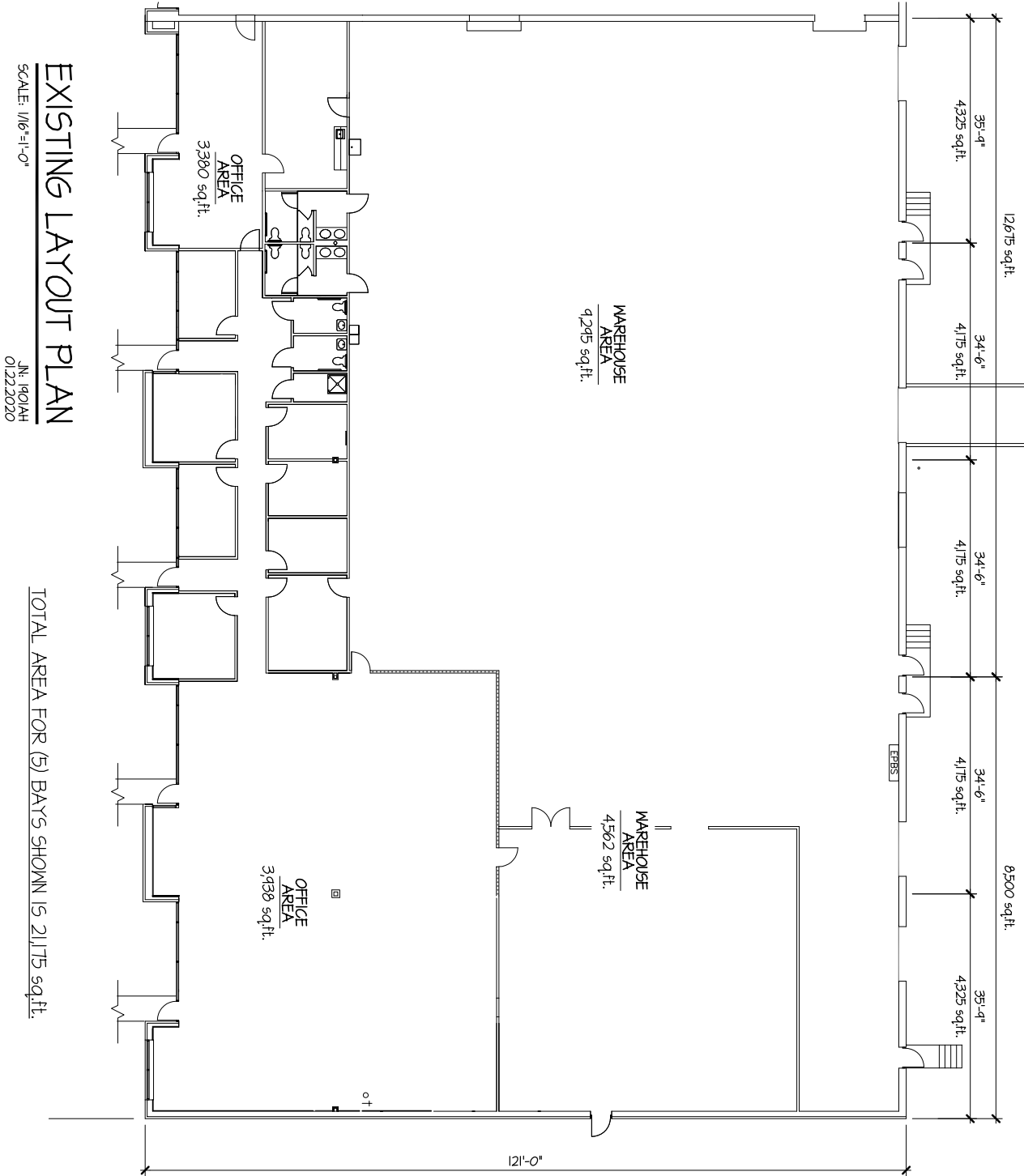
HIGHLIGHTS

- Suite 2501-2509: 21,175 SF w/7,645 SF office
- 4 Docks
- 1 Loading Ramp
- Fully Conditioned Office/Warehouse
- 16'2" - 17' clear ceilings
- Heavy Power w/ 800a/480v/3ph & 1200a/208v/3ph
- Zoned M-1
- Enterprise Zone in Henrico County
- Immediate Access to I-64
- Lease: \$10.50-\$11.50/SF NNN

This information has been prepared by Porter Realty Company, Inc. for marketing purposes only. No representation or warranty, expressed or implied, is made as to the accuracy of the foregoing information. Terms of sale or lease and availability are subject to change or withdrawal without notice.

SUITES 2501-2509

2501-2555 Mechanicsville Turnpike | Richmond, VA 23223



Cliff Porter, CCIM, SIOR
(804) 521-1442
cliff@porterinc.com

Robert Porter III
(804) 521-1455
rep3@porterinc.com



Porter Realty Company, Inc. | 4801 Radford Avenue | P.O. Box 6482 | Richmond, VA 23230 | www.porterinc.com

This information has been prepared by Porter Realty Company, Inc. for marketing purposes only. No representation or warranty, expressed or implied, is made as to the accuracy of the foregoing information. Terms of sale or lease and availability are subject to change or withdrawal without notice.

LOCATION MAPS

2501-2555 Mechanicsville Turnpike | Richmond, VA 23223

