

PROPERTY DETAILS

- Contiguous warehouse spaces for lease in the West Broward County.
- Suite 5101: +/- 4,000 SF
- Suite 5121: +/- 3,960 SF
- Office: +/- 1,200 SF (each)
- Rental Rate From: \$19.50 NNN + \$7.74 CAM (est. 2026)
- 3 Grade Level Door
- 3 Dock High Door
- 21' ceiling height
- Parking: +/- 2.43 / 1,000 SF
- Zoning: I-1 (Light Industrial)
- Strategically located just east of I-75, with convenient access to I-595, the Florida Turnpike, and I-95.

ABOUT PROPERTY



PRICE

\$19.50 PSF (NNN)



YEAR BUILT

2000



AVAILABLE SF

3,960 SF - 7,960 SF



PARKING

+/- 2.43 / 1,000 SF



LOCATION

Sunrise, FL

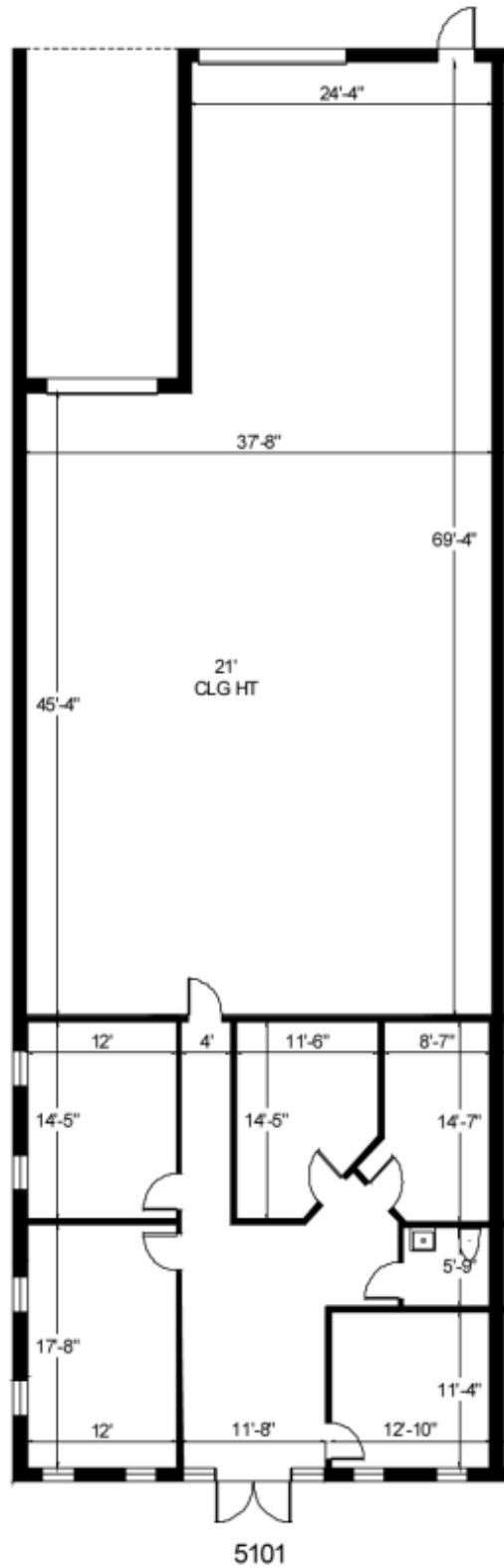
For more information:

Keith R. Graves, CCIM, SIOR
954.652.2031 | Kgraves@Bergercommercial.Com
bergercommercial.com

Daniel Forman
954.652.2004 | Dforman@Bergercommercial.Com

Jonathan Thiel
954.652.2020 | Jthiel@Bergercommercial.Com





For more information:

Keith R. Graves, CCIM, SIOR

Daniel Forman

Jonathan Thiel

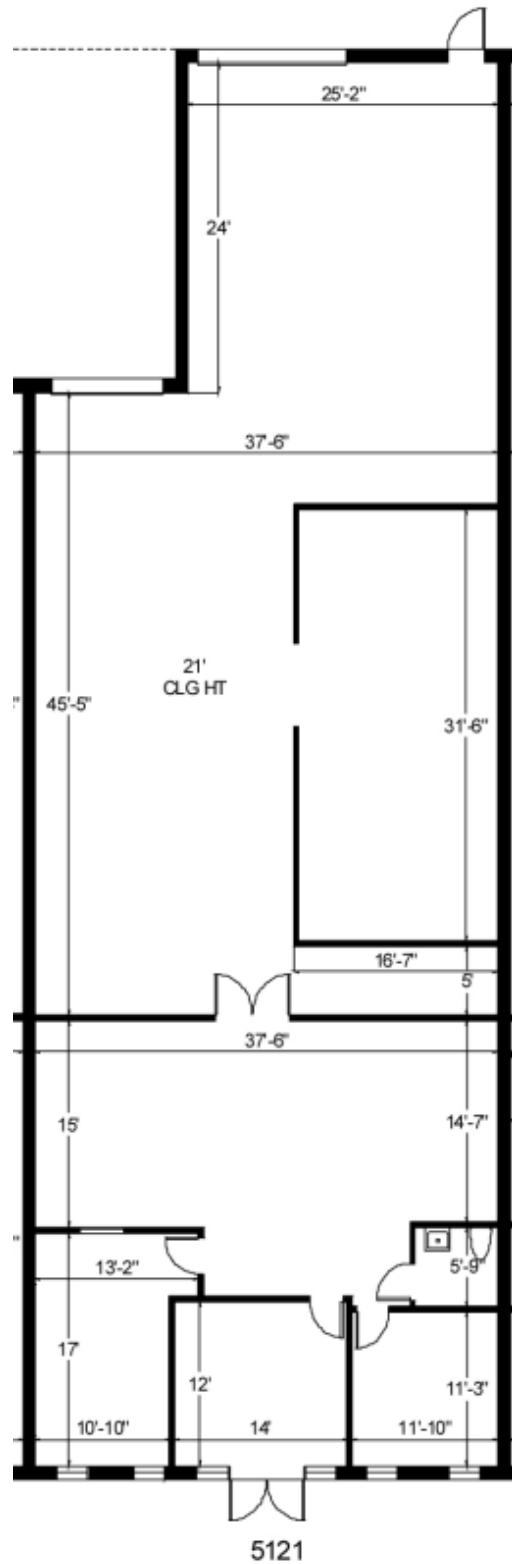
954.652.2031 | Kgraves@Bergercommercial.Com

954.652.2004 | Dforman@Bergercommercial.Com

954.652.2020 | Jthiel@Bergercommercial.Com

bergercommercial.com





For more information:

Keith R. Graves, CCIM, SIOR

Daniel Forman

Jonathan Thiel

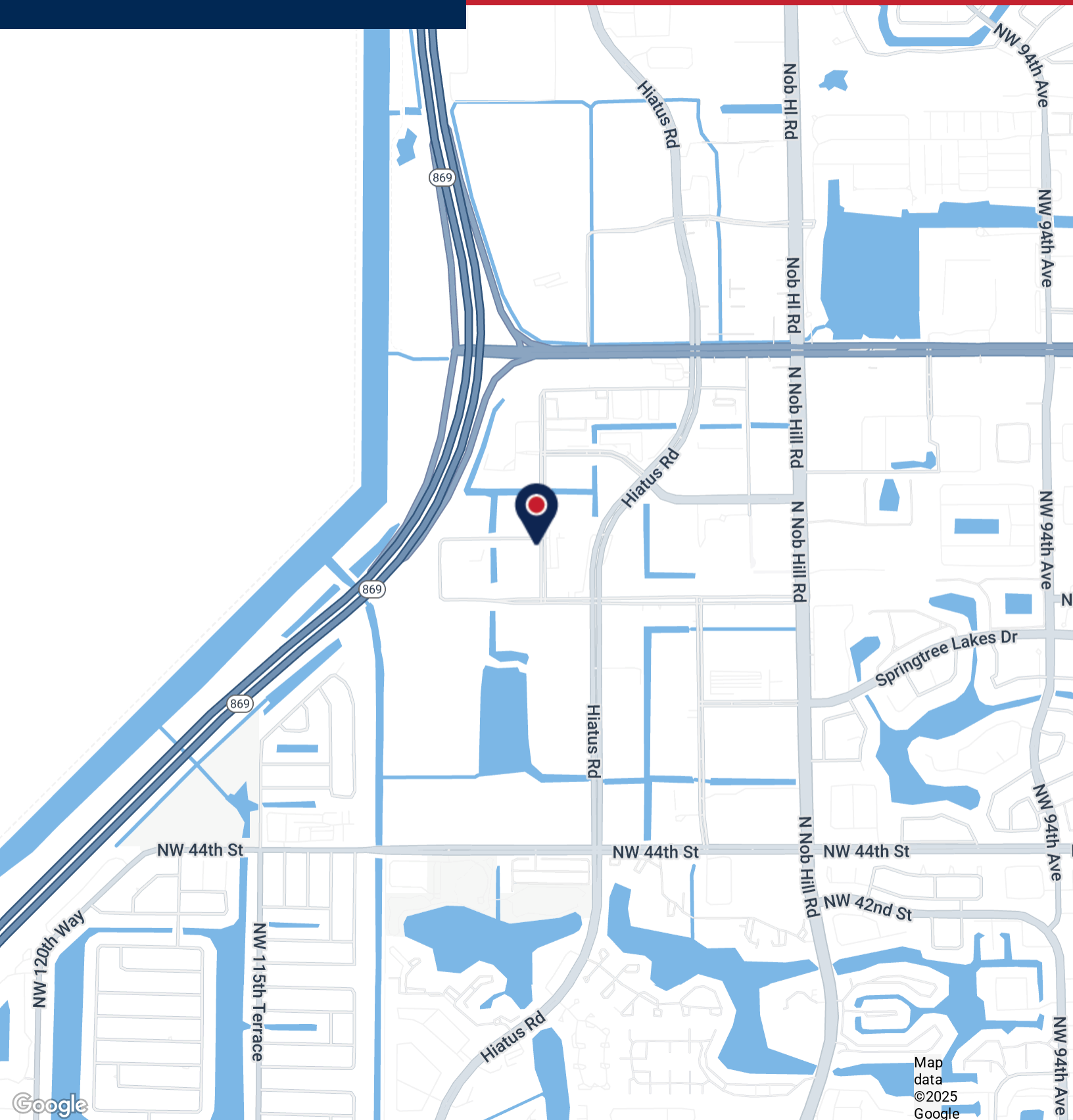
954.652.2031 | Kgraves@Bergercommercial.Com

954.652.2004 | Dforman@Bergercommercial.Com

954.652.2020 | Jthiel@Bergercommercial.Com

bergercommercial.com





Map data ©2025 Google

For more information:

Keith R. Graves, CCIM, SIOR

Daniel Forman

Jonathan Thiel

954.652.2031 | Kgraves@Bergercommercial.Com

954.652.2004 | Dforman@Bergercommercial.Com

954.652.2020 | Jthiel@Bergercommercial.Com

bergercommercial.com

