

My Report



PENTA PACIFIC
PROPERTIES
5500 NORWALK BOULEVARD / SANTA FE SPRINGS, CA 90670 / 562-699-1922
License # 00346517

Penta Pacific Properties

9500 Norwalk Blvd, Santa Fe Springs, CA 90670 | 562-699-1922

Available Acres 2.30

Land For Lease

Available SF 100,824



Address: 12027 Greenstone Ave, Santa Fe Springs, CA 90670

Cross Streets: Greenstone Ave/Sunshine Ave

±2.30 Acre Truck Yard
6,994 SF Truck Service Facility
786 SF Office Building
Approved for Truck & Trailer Parking Storage
Short Term or Longer Term Possible

Lease Rate/SF: TBD
Sale Price: NFS
Available Acres: 2.30 Ac
Available SF: 100,824 SF
Divisible SF: No
Building SF: 7,780 SF
Yard: Fenced / Paved

Gas: Yes
Water: Yes
Sewer: Yes
Electric: Yes
Fiber: Yes

Specific Use: Industrial
Zoning: M2
Rail Service: No
Market Area: MidCounties
APN: 8026-020-074, 075

Listing #: 26732646

Notes: contact broker for info on short-term and longer-term rates and conditions.

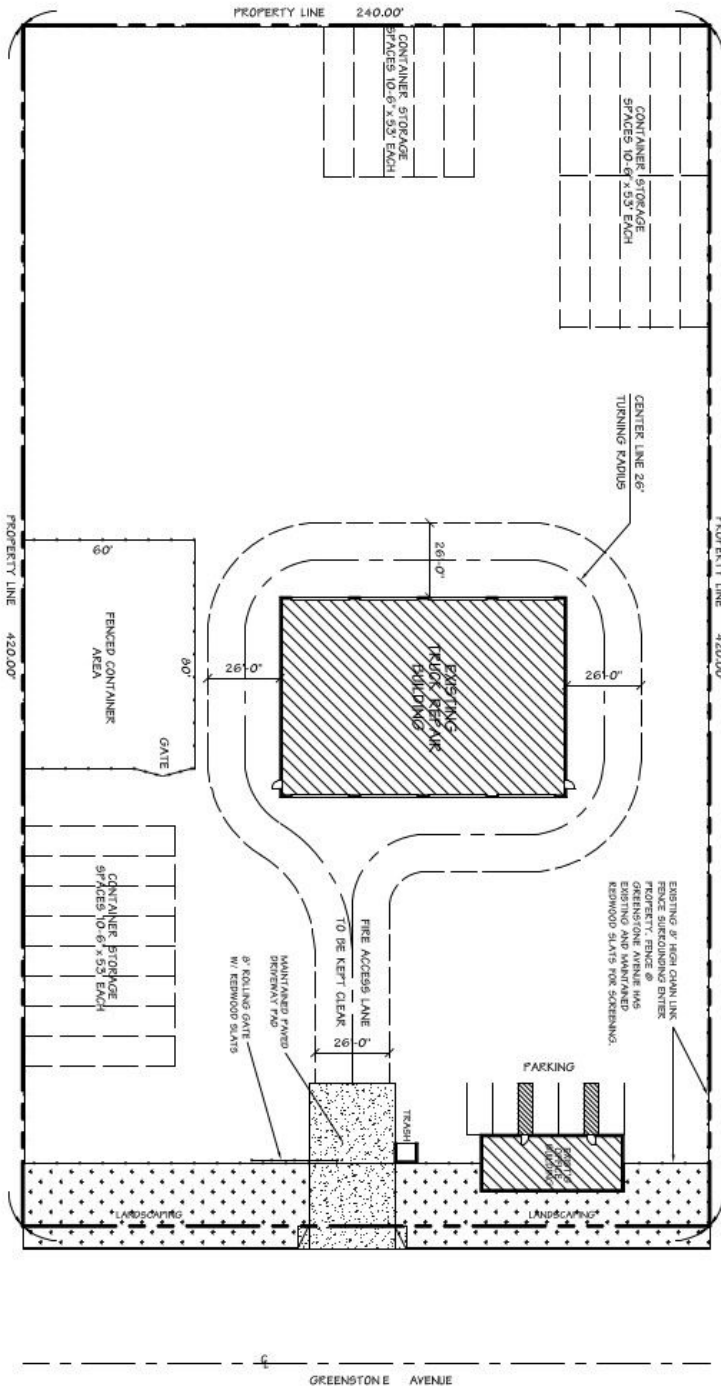


Douglas Wells
doug@pentapacific.com
562-908-6012

Paul Hesse
paul@pentapacific.com
949-633-0860

Greg Jenkins
greg@pentapacific.com
562-618-9440





PENTA PACIFIC PROPERTIES
SITE PLAN
 SCALE: 1" = 50'
 12027 GREENSTONE AVE, SANTA FE SPRINGS CA