



# 727 Queen Street East

## Prime Retail for Lease

Located in the Heart of Toronto's Riverside District





# 727 Queen Street East

## Prime Retail for Lease

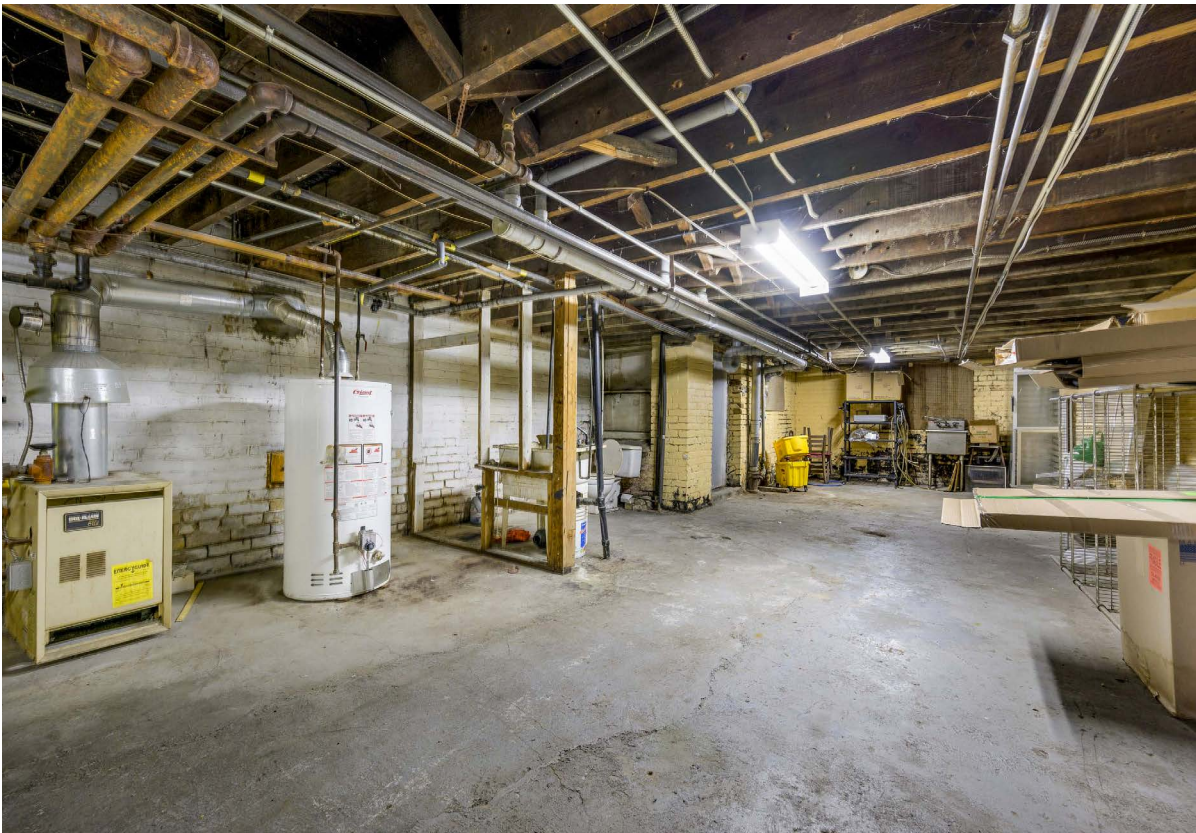
Address: 727 Queen Street East, Toronto  
Size: ~940 sq. ft. + basement  
Net Rent: \$4,650 / month  
TMI: \$1,866.96 / month  
Available: 30 days' notice

- Rare retail available in the heart of Toronto's popular Riverside District
- Includes 2-3 parking stalls located behind the property
- Five minute walk to the future Riverside-Leslieville subway station and located directly on the 501 Queen streetcar line
- Seconds from the DVP
- Neighbouring retailers include Duke's Refresher Bar, Broadview Hotel, LCBO, Dollarama, La Carnita, Anytime Fitness, COPS Donuts, The Opera House and many more!



# 727 Queen Street East

## Interior Images

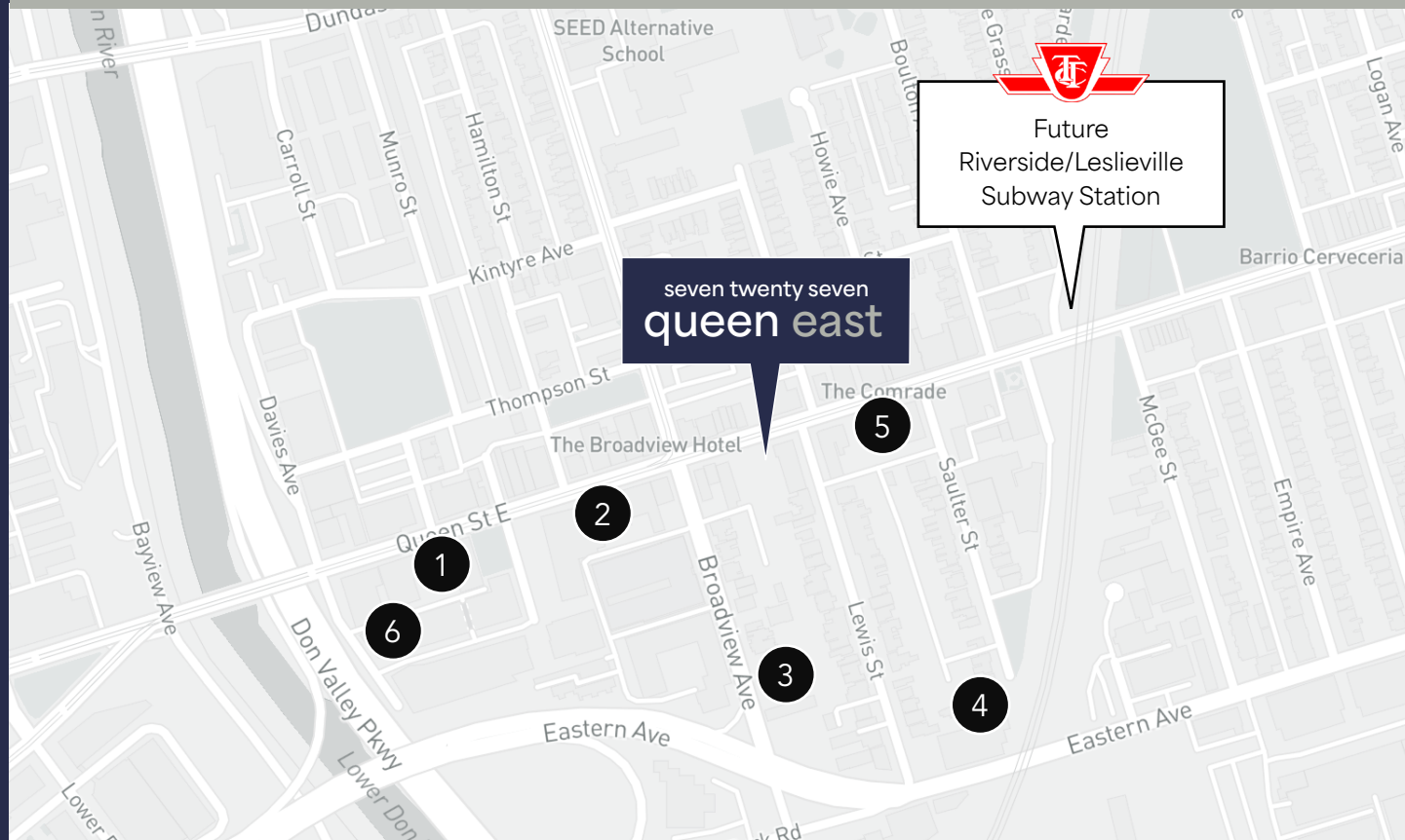


# the location | riverside district.

727 Queen Street East is located on a prime corner in the heart of Riverside District at Queen Street East and Broadview Avenue. Riverside District is a popular east-end neighbourhood spanning 10 blocks of Queen Street East from the Don Valley Parkway to De Grassi Street. The area is rich in history and boasts over 100 restaurants, bars, shops and attractions. Popular neighbourhood spots include The Broadview Hotel, The Opera House, Duke's Refresher Bar, Juicebox Vintage and many more!

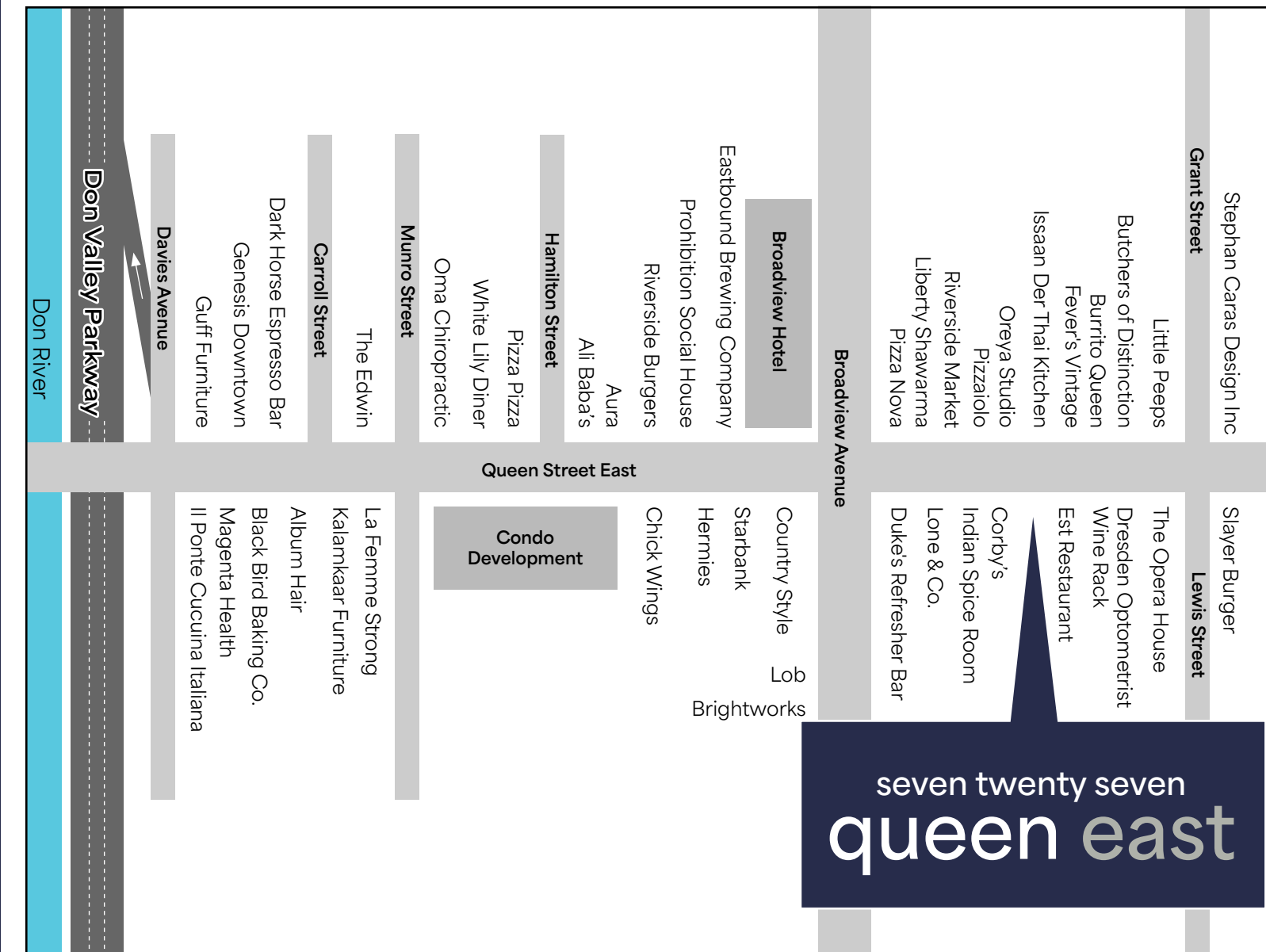


## Neighbouring Development Activity



- |          |                                                           |          |                                                           |
|----------|-----------------------------------------------------------|----------|-----------------------------------------------------------|
| <b>1</b> | 641 Queen St East<br>Pre-Construction<br># of Units: 94   | <b>4</b> | 356 Eastern Avenue<br>Pre-Construction<br># of Units: 140 |
| <b>2</b> | 685 Queen St East<br>Under Construction<br># of Units: 26 | <b>5</b> | Biblio Lofts<br>Under Construction<br># of Units: 28      |
| <b>3</b> | 21 Broadview<br>Pre-Construction<br># of Units: 340       | <b>6</b> | Riverside Square<br>Recently Complete<br># of Units: 913  |

**1,541  
New Units**



**seven twenty seven  
queen east**



## contact.

---

ARLIN MARKOWITZ\*  
Executive Vice President  
416 815 2374  
arlin.markowitz@cbre.com

ALEX EDMISON\*  
Senior Vice President  
416 874 7266  
alex.edmison@cbre.com

JACKSON TURNER\*\*  
Senior Vice President  
416 815 2394  
jackson.turner@cbre.com

EMILY EVERETT\*  
Sales Associate  
647 943 4185  
emily.everett@cbre.com

## **CBRE** urban retail team

This disclaimer shall apply to CBRE Limited, Real Estate Brokerage, and to all other divisions of the Corporation; to include all employees and independent contractors ("CBRE"). The information set out herein, including, without limitation, any projections, images, opinions, assumptions and estimates obtained from third parties (the "Information") has not been verified by CBRE, and CBRE does not represent, warrant or guarantee the accuracy, correctness and completeness of the Information. CBRE does not accept or assume any responsibility or liability, direct or consequential, for the Information or the recipient's reliance upon the Information. The recipient of the Information should take such steps as the recipient may deem necessary to verify the Information prior to placing any reliance upon the Information. The Information may change and any property described in the Information may be withdrawn from the market at any time without notice or obligation to the recipient from CBRE. CBRE and the CBRE logo are the service marks of CBRE Limited and/or its affiliated or related companies in other countries. All other marks displayed on this document are the property of their respective owners. All Rights Reserved.