

OFFICE & RETAIL SUITES FOR LEASE

PENDER'S PLACE

1230 W 25th Street, Norfolk, VA 23508



ABOUT PROPERTY

- New Development in the Rail Yard corridor in Norfolk
- Ideal for small office and professional retail services
- Individual suite size ranging from 686 – 774 square feet
 - Contiguous units can be combined, up to ~4,400 square feet
- Parking on Site
- Units to be delivered move-in ready with brand new finishes.
 - New HVAC & Lighting
 - Polished Concrete Floors
 - Restroom
- Flexible term length available
- Available July 2026
- Asking Rent: \$1,550-\$1,700 / month, net utilities

FOR MORE INFORMATION:

RYAN KING

757.640.8210

RyanKing@HarveyLindsay.com

ANDY STEIN

757.640.9463

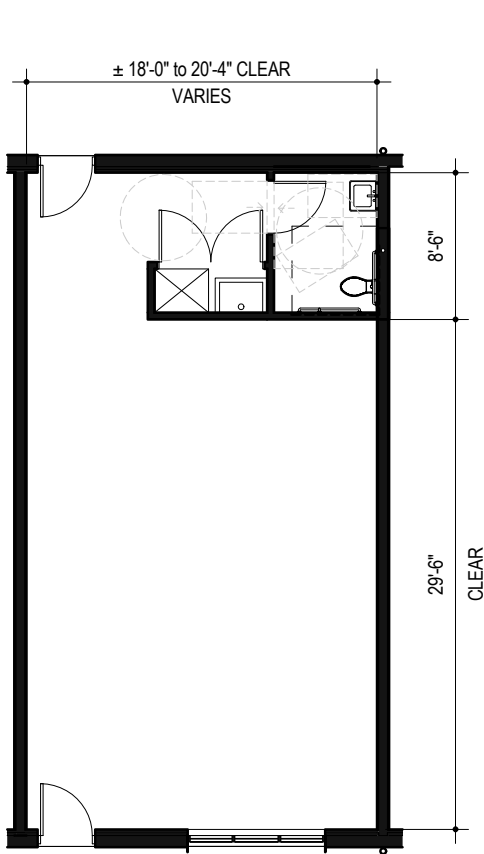
AndyStein@HarveyLindsay.com

HARVEY LINDSAY

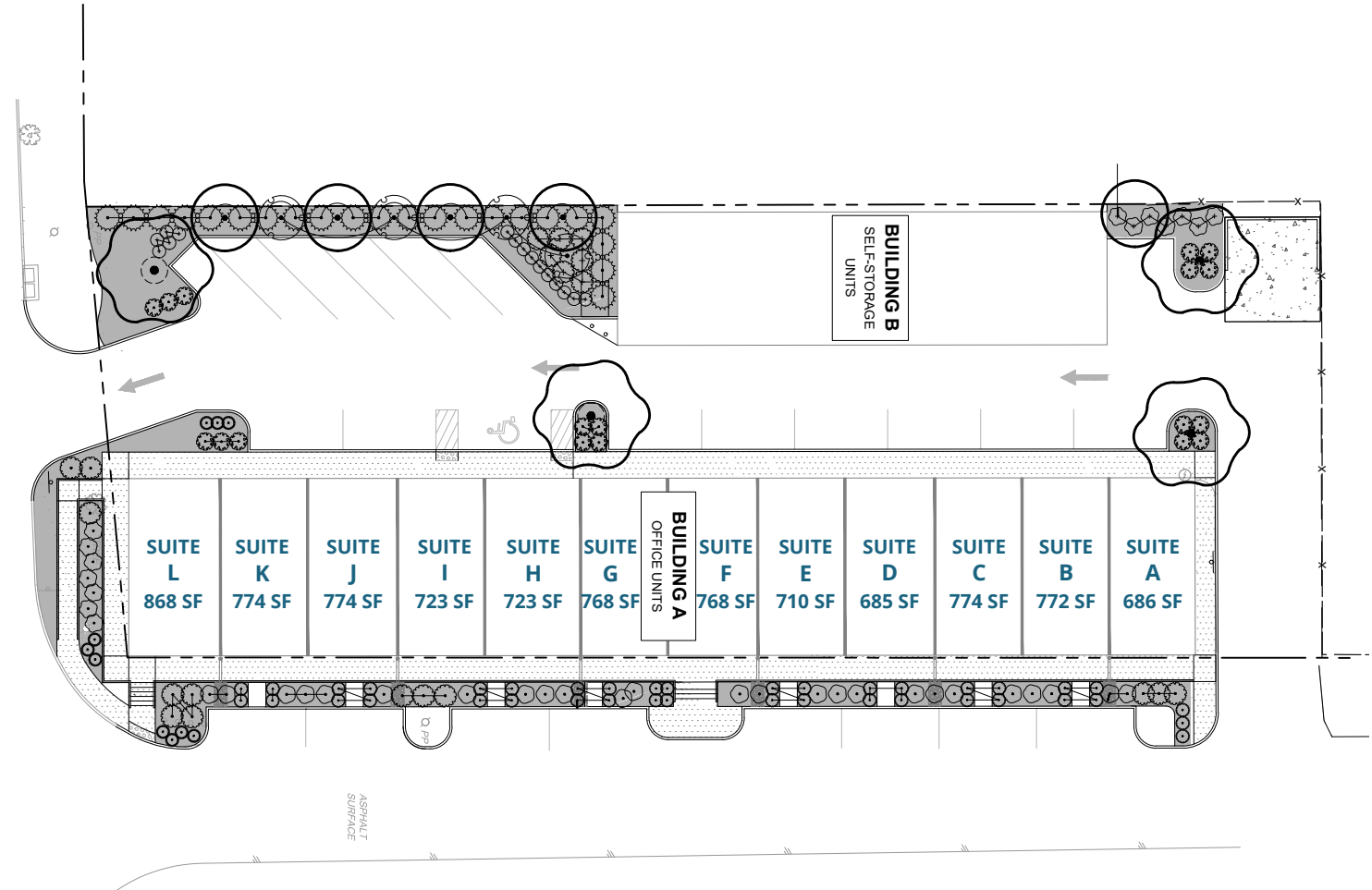
COMMERCIAL REAL ESTATE

UNIT & SITE PLAN

PENDER'S PLACE - 1230 W 25th Street, Norfolk, VA



EXAMPLE UNIT



SITE PLAN

FOR MORE INFORMATION:

RYAN KING

757.640.8210

RyanKing@HarveyLindsay.com

ANDY STEIN

757.640.9463

AndyStein@HarveyLindsay.com

HARVEY LINDSAY

COMMERCIAL REAL ESTATE

CONCEPT RENDERINGS

PENDER'S PLACE - 1230 W 25th Street, Norfolk, VA



FOR MORE INFORMATION:

RYAN KING

757.640.8210

RyanKing@HarveyLindsay.com

ANDY STEIN

757.640.9463

AndyStein@HarveyLindsay.com

HARVEY LINDSAY

COMMERCIAL REAL ESTATE

IMMEDIATE AERIAL VIEW

PENDER'S PLACE - 1230 W 25th Street, Norfolk, VA



FOR MORE INFORMATION:

RYAN KING

757.640.8210

RyanKing@HarveyLindsay.com

ANDY STEIN

757.640.9463

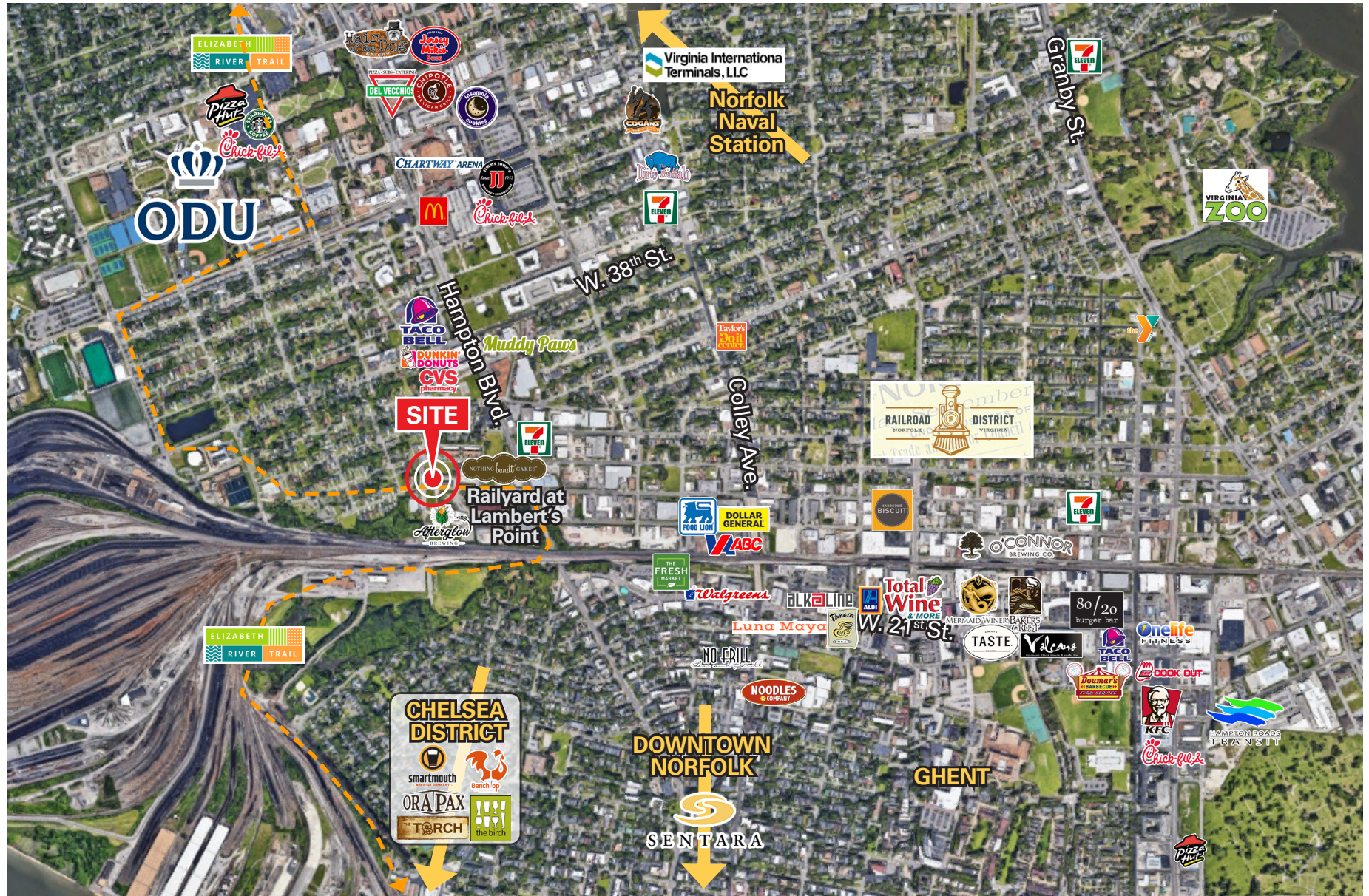
AndyStein@HarveyLindsay.com

HARVEY LINDSAY

COMMERCIAL REAL ESTATE

SURROUNDING AERIAL VIEW

PENDER'S PLACE - 1230 W 25th Street, Norfolk, VA



FOR MORE INFORMATION:

RYAN KING

757.640.8210

RyanKing@HarveyLindsay.com

ANDY STEIN

757.640.9463

AndyStein@HarveyLindsay.com

HARVEY LINDSAY

COMMERCIAL REAL ESTATE

NORFOLK INNOVATION CORRIDOR

PENDER'S PLACE - 1230 W 25th Street, Norfolk, VA



FOR MORE INFORMATION:

RYAN KING
 757.640.8210
 RyanKing@HarveyLindsay.com

ANDY STEIN
 757.640.9463
 AndyStein@HarveyLindsay.com

HARVEY LINDSAY
 COMMERCIAL REAL ESTATE