

RARE LIVE/WORK PROPERTY AVAILABLE 86050 PAGES DAIRY ROAD, YULEE, FL



This is a rare live/work property that includes a 3 BR, 2 BA, 1,343 SF house and a large 2,646 SF storage building ideal for a small business that wants to live and work at home, the property also has an additional 400 SF building with washer/dryer hook-ups and a large carport. Located on Pages Dairy Rd right off of high-traffic US Hwy 17. The property is ideal for small firms such as a reseller, consultant, or other professional that needs equipment or tool storage or a small contractor needing to keep supplies and inventory. The owner will lease, sell, or consider a lease with an option to purchase. Large 1.03 acre lot. Call today for additional information!

PROPERTY FEATURES:

\$2,500/month

- 1,343 SQ FT HOME
- 2,646 SQ FT BUILDING & ADDITIONAL 400 SQ FT BUILDING
- 1.03 ACRES
- COMMERCIAL INTENSIVE ZONING



Sal Grimaldi
904.576.1826
sal@acrfl.com



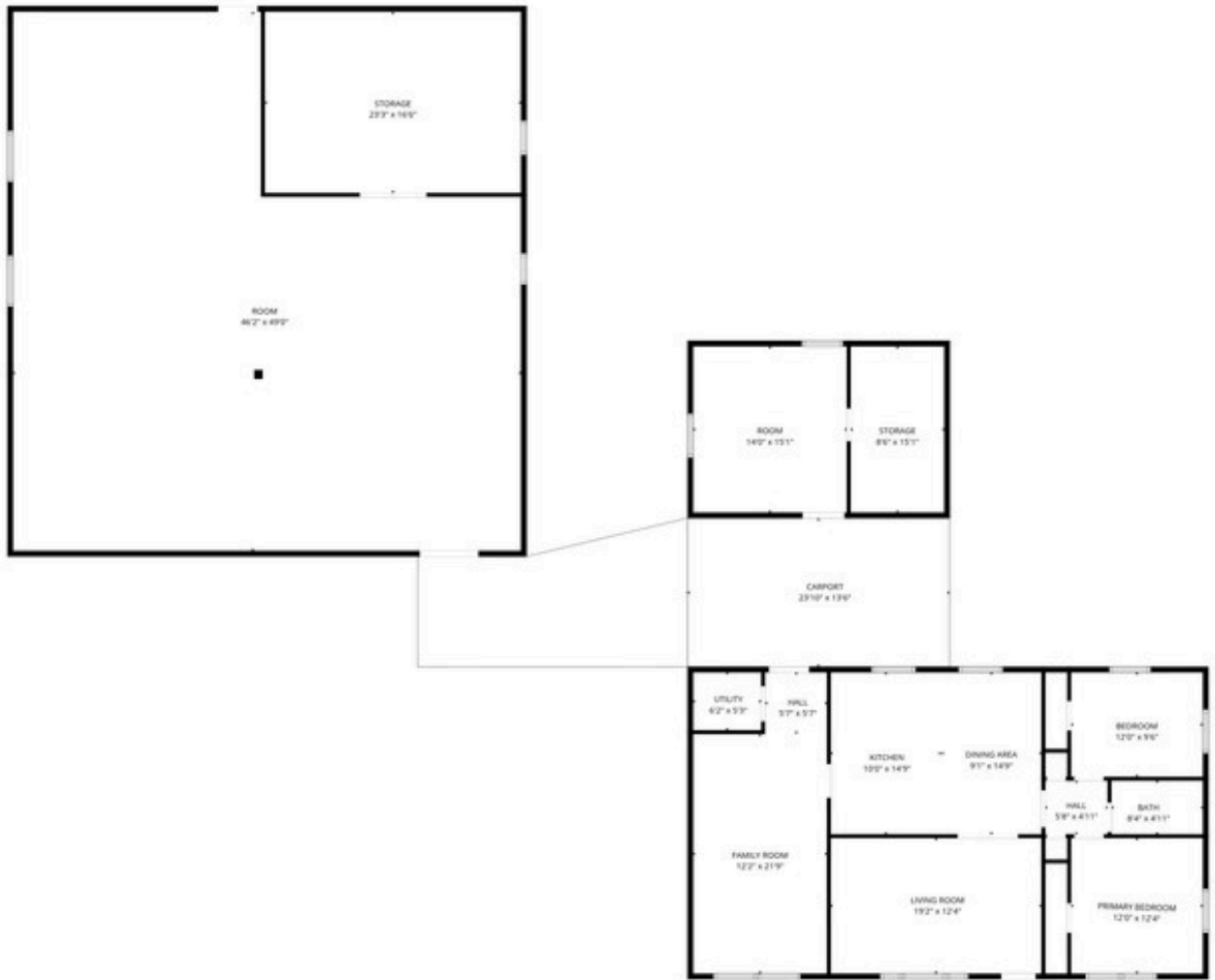
www.acrfl.com 904.261.2770

Tara Thousand
904.710.1870
tara@acrfl.com



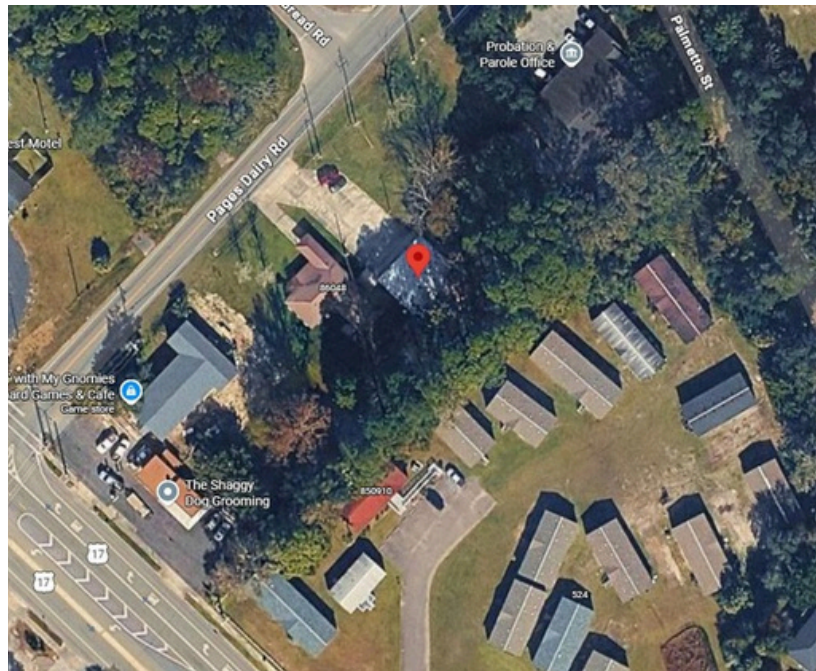


Disclaimer: Information is from public sources deemed to be reliable but not warranted to be accurate. Reader should independently verify the information provided here.



Total GLA: 1343 sq. ft | Total: 4407 sq. ft
 1st floor: 1343 sq. ft (Excluded areas 3064 sq. ft)

FLOOR PLAN CREATED BY CUBICASA APP. MEASUREMENTS DEEMED HIGHLY RELIABLE BUT NOT GUARANTEED.



Disclaimer: Information is from public sources deemed to be reliable but not warranted to be accurate. Reader should independently verify the information provided here.