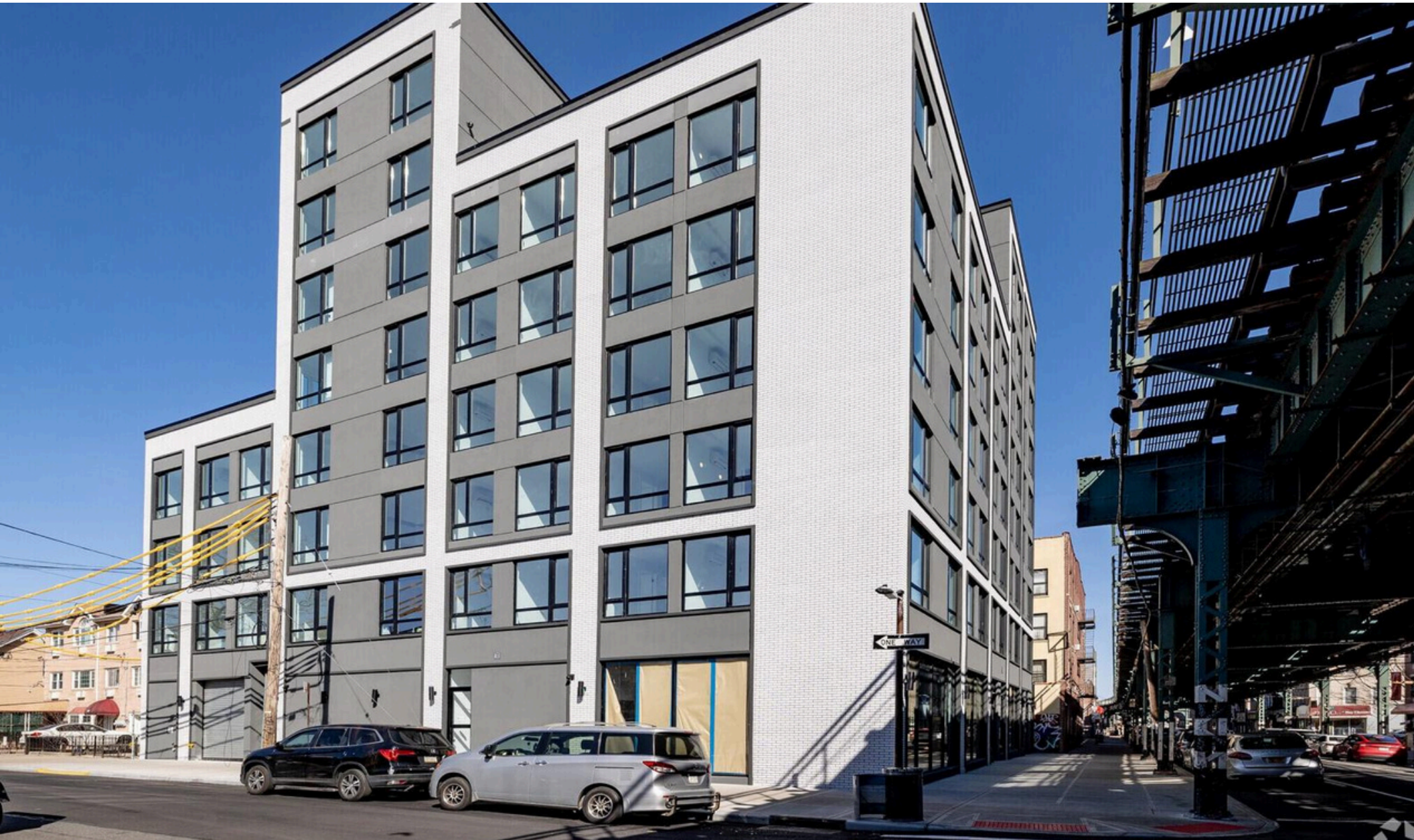


EAST NEW YORK, BROOKLYN, NY

2795 FULTON STREET

MOD



SPACE DETAILS

LOCATION

Between Van Siclen Avenue and Hendrix Street

SPACE

Ground Floor: 8,000 SF

ASKING RENT

\$30 PSF

NEIGHBORS

Bravo Supermarkets, Citi, Key Food, Happy Coffee Shop, C-Town, Pioneer Supermarket, George Walker Jr Park, Planet Fitness, Associated food Stores, and Fulton Pharmacy

TRANSPORTATION



COMMENTS

- Strong Day Time Foot Traffic
- New construction building
- Landlord will turnkey buildout at \$30 PSF

CONTACTS

MEYER DAGMY

718-249-3613

m@modcre.com

EDDIE MAMIYE

917-379-6719

e@modcre.com



EXTERIOR IMAGES



CONTACTS

MEYER DAGMY

718-249-3613

m@modcre.com

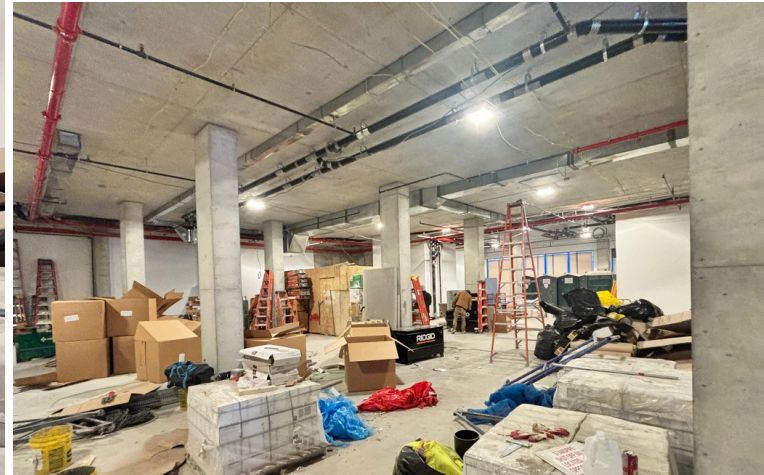
EDDIE MAMIYE

917-379-6719

e@modcre.com



INTERIOR IMAGES



CONTACTS

MEYER DAGMY

718-249-3613

m@modcre.com

EDDIE MAMIYE

917-379-6719

e@modcre.com



AREA MAP



CONTACTS

MEYER DAGMY

718-249-3613

m@modcre.com

EDDIE MAMIYE

917-379-6719

e@modcre.com

