



For **sublease**

High-end turnkey professional service space

2049 Century Park East, 30th Floor, Los Angeles, CA 90067

SPACE PROFILE

17,707 SF
Total SF

90-180 Days
Availability

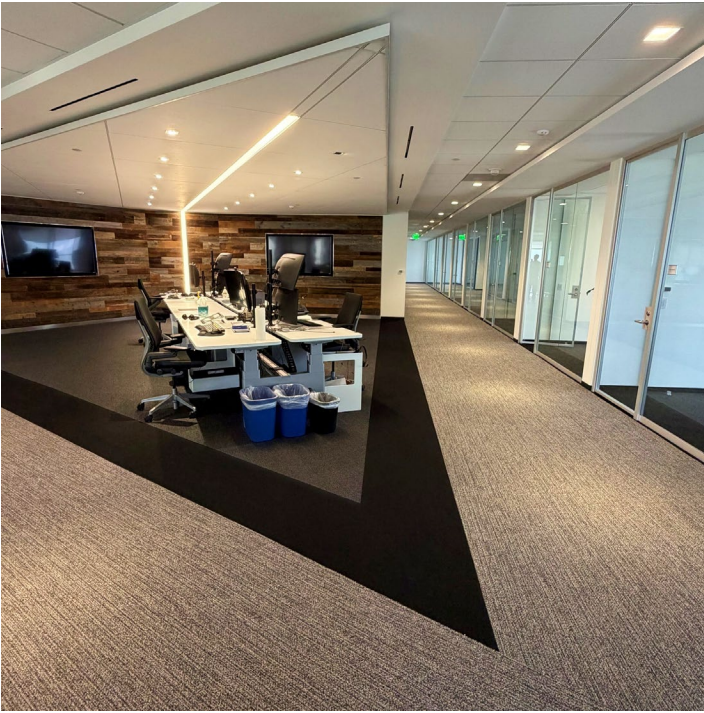
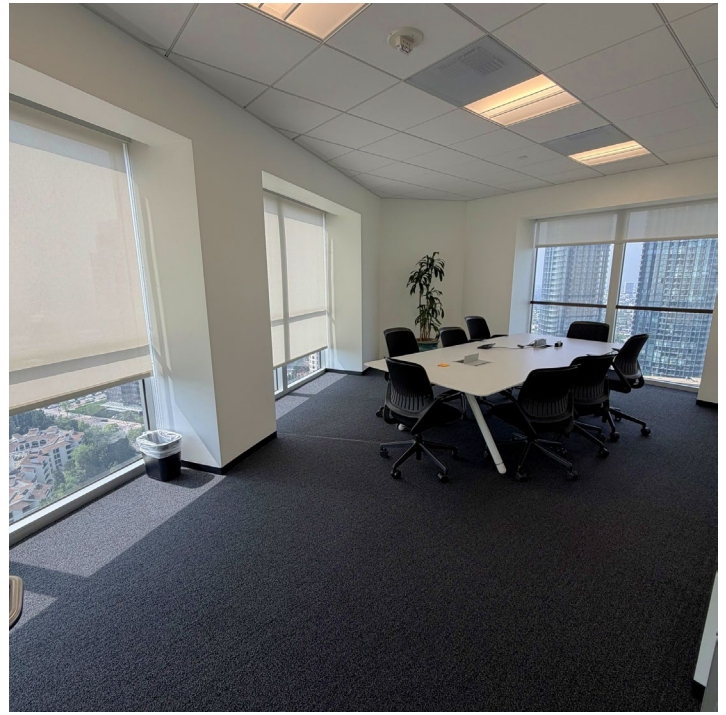
\$6.50 FSG
Rental rate

2.5/1,000 SF
Parking ratio

9/30/2027
Lease expires

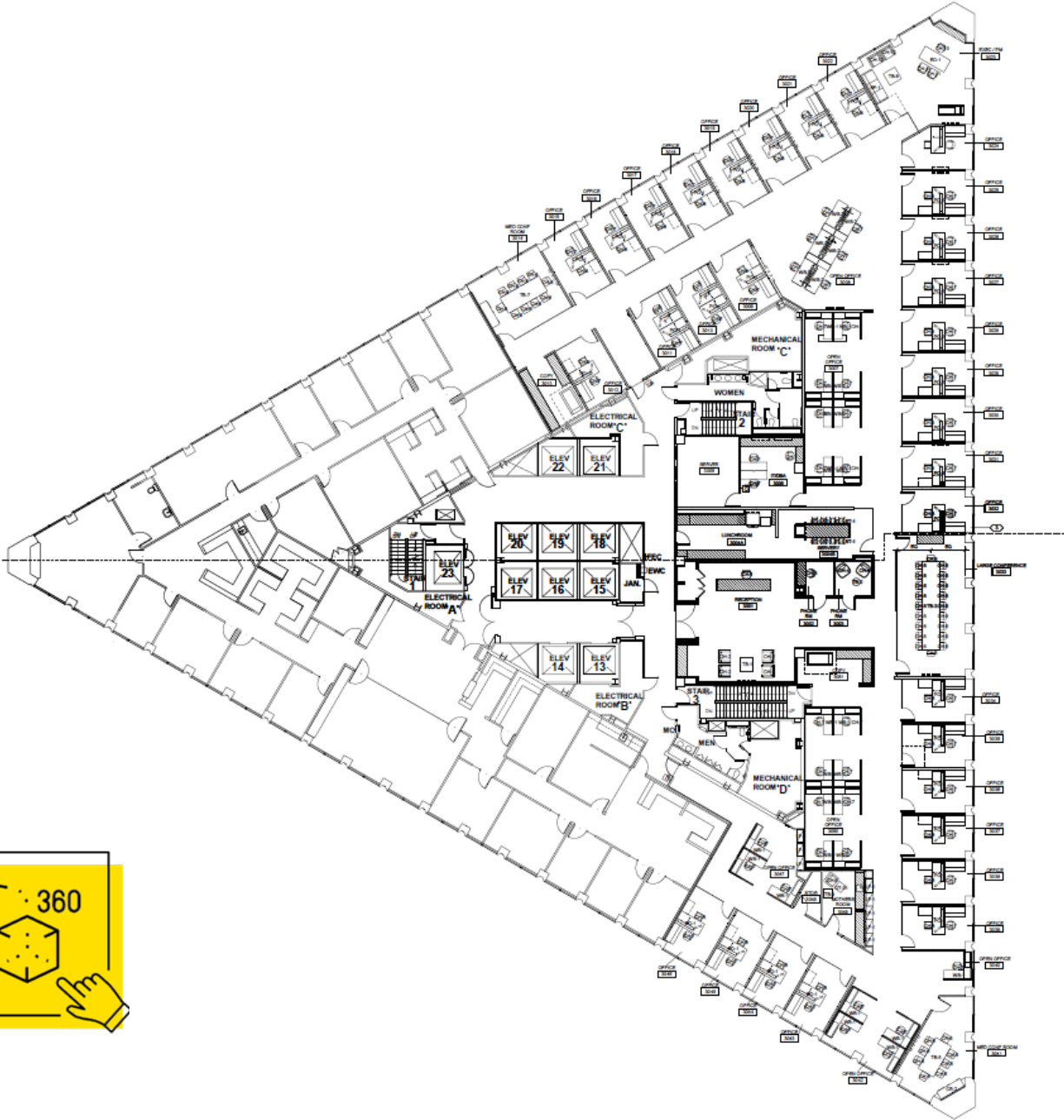
Available
Furniture






KEY HIGHLIGHTS

- 28 private offices including 1 large CEO office
- 4 interior offices
- 30 workstations including a 6 workstation trading floor
- 3 conference rooms (1 large, 2 medium)
- 2 phone booths
- Sweeping views of greater Los Angeles from the 30th floor
- Part of the Century Park 14 acre campus with best in class amenities, park, restaurants, bocce court, conference center, event venues and more



Andy Lustgarten
+1 310 444 1040
alustgarten@savills.us
License #01381919

 The information contained in this communication has been obtained from a variety of sources believed to be reliable but has not been verified. NO WARRANTY OR REPRESENTATION, EXPRESS OR IMPLIED, IS MADE AS TO THE CONDITION OF THE PROPERTY OR ACCURACY OR COMPLETENESS OF THE INFORMATION CONTAINED HEREIN AND SAME IS SUBMITTED SUBJECT TO ERRORS, OMISSIONS, CHANGE OF PRICE, RENTAL OR OTHER CONDITIONS, WITHDRAWAL WITHOUT NOTICE AND TO ANY SPECIFIC CONDITIONS IMPOSED BY THE PROPERTY OWNER OR LESSOR.