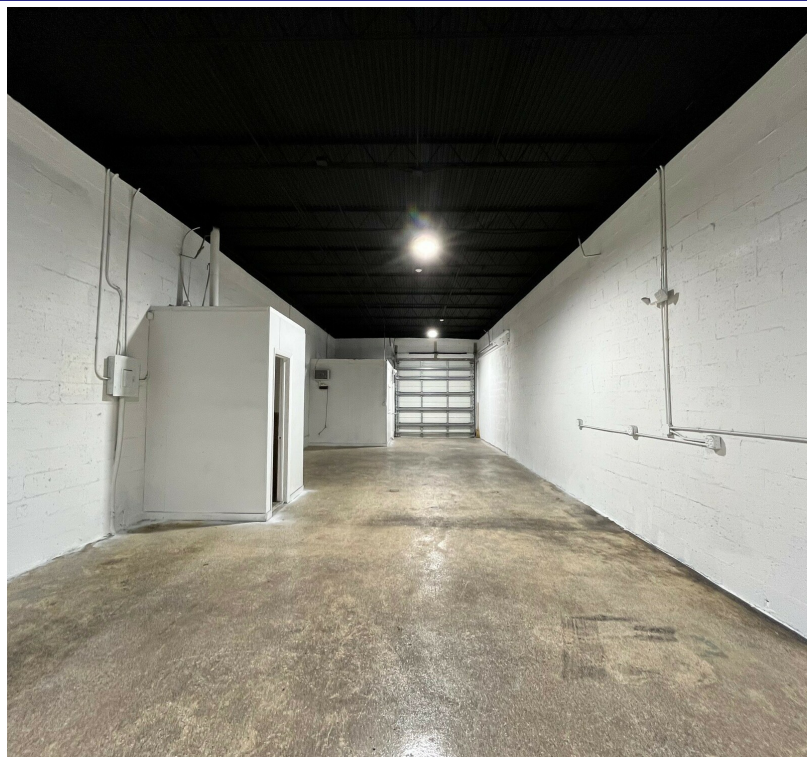


FOR LEASE

LAUDERDALE LAKES INDUSTRIAL PARK

2696 NW 31ST AVENUE, LAUDERDALE LAKES, FL 33311

3079 NW 28TH STREET BLDG #1



SPACE HIGHLIGHTS

- 1,400 SF
- 101 SF air-conditioned office
- Front and rear 10' x 10' grade level overhead doors
- LED lighting
- Hurricane impact doors and windows
- 12'9" clear ceiling
- Private restroom
- On-site Management



ANGIE WEAVER

Lauderdale Lakes and Lauderdale Manager
Direct: 954.485.9200 | Cell: 917.645.2339
angie@levyrai.com

HALEY PRESSER

Property Manager / Sales Associate
Direct: 954.485.9200 | Cell: 954.254.5396
Haley@levyrai.com

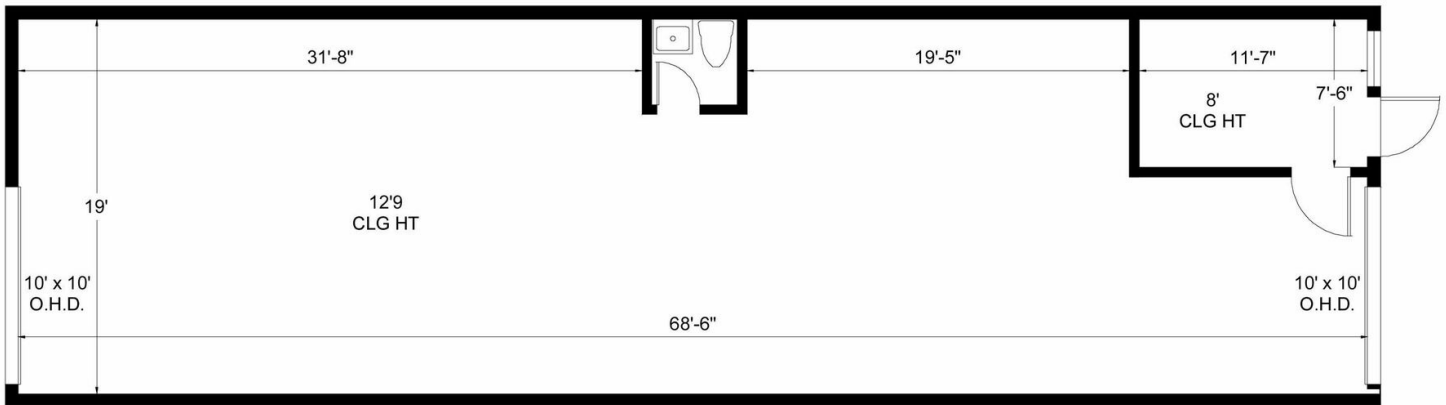


LAUDERDALE LAKES INDUSTRIAL PARK

2696 NW 31ST AVENUE, LAUDERDALE LAKES, FL 33311

LAUDERDALE LAKES INDUSTRIAL PARK

Building #1, 3079 NW 28th Street | Oakland Park, FL 33311



Office - 101 Sq. Ft.
Warehouse - 1,299 Sq. Ft.

1,400 Rentable Sq. Ft.
www.LevyRealtyAdvisors.com

ANGIE WEAVER

Lauderdale Lakes and Lauderhill Manager
Direct: 954.485.9200 | Cell: 917.645.2339
angie@levyrai.com

HALEY PRESSER

Property Manager / Sales Associate
Direct: 954.485.9200 | Cell: 954.254.5396
Haley@levyrai.com

