



2461 SOUTH CLARK

# AN OFFICE EXPERIENCE THAT TOTALLY HITS THE MARK

2450 Crystal Drive / 2461 S Clark Street  
Arlington, VA 22202

Gary Cook / [gcook@lpc.com](mailto:gcook@lpc.com) / 703.284.3379

Stoddie Nibley / [snibley@lpc.com](mailto:snibley@lpc.com) / 703.284.5884

Ashley Superville / [asuperville@lpc.com](mailto:asuperville@lpc.com) / 703.284.3628



[CRYSTALANDCLARK.COM](https://www.CRYSTALANDCLARK.COM)



[VIEW VIDEO](#)



MRP | REALTY

Lincoln



## Introducing 2450 Crystal and 2461 S Clark

Fully connected, and at the absolute center of National Landing, are two transformed office buildings that provide access, proximity, and convenience to every workday. Modern, dynamic spaces. Inspiring amenities. And an outdoor plaza full of must haves. **Experience it all at the center of it all.**

EXPERIENCE IT ALL  
AT THE CENTER OF IT ALL

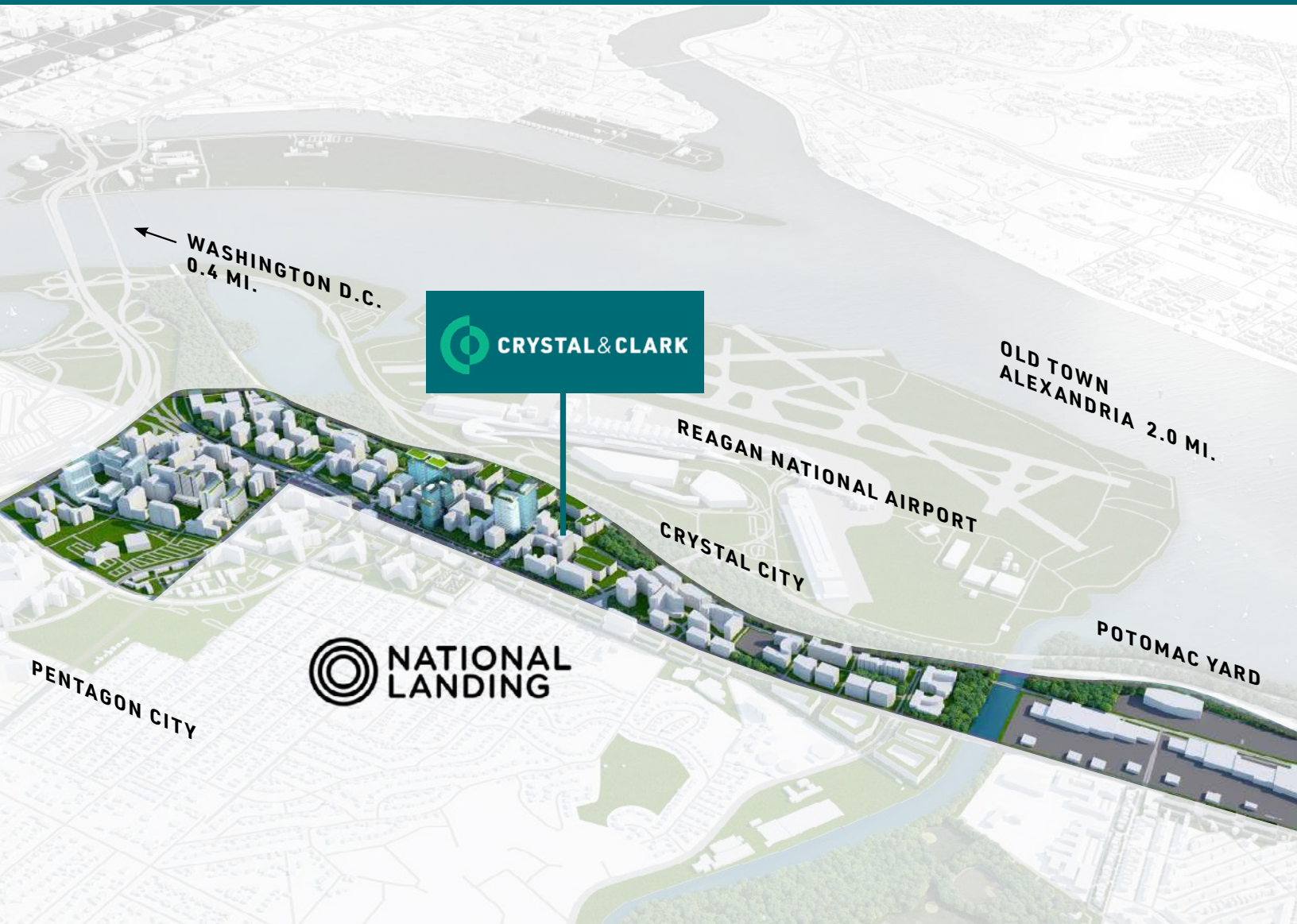


### UPSCALE FEATURES & AMENITIES

- Impressive new plaza entrance and 2nd-floor outdoor courtyard with open-air conference tables and seating
- Immediate access to on-site retailers: Panera, Mezeh, Subway, New Yorker Grill & Navy Federal Credit Union
- Ready to move-in spec suites and customizable full floors
- Spectacular Townhall with amenity space
- Fresh, biophilic design—bringing outdoor elements inside
- New club-quality fitness center with locker rooms and towel service
- Renovated meeting rooms, plus new 200+ person conference center
- Secure indoor bicycle storage
- 2025 WELL Health-Safety Rated

### A SOUGHT-AFTER CENTRAL LOCATION

- Convenient Metro access and immediate access to Reagan Washington National Airport
- Central to Amazon HQ2 and Virginia Tech innovation campus
- Five-minute walk to National Landing attractions in the north end
- Quickly connect with downtown DC government agencies, plus The Pentagon
- Street-level retail, dining, and lifestyle services



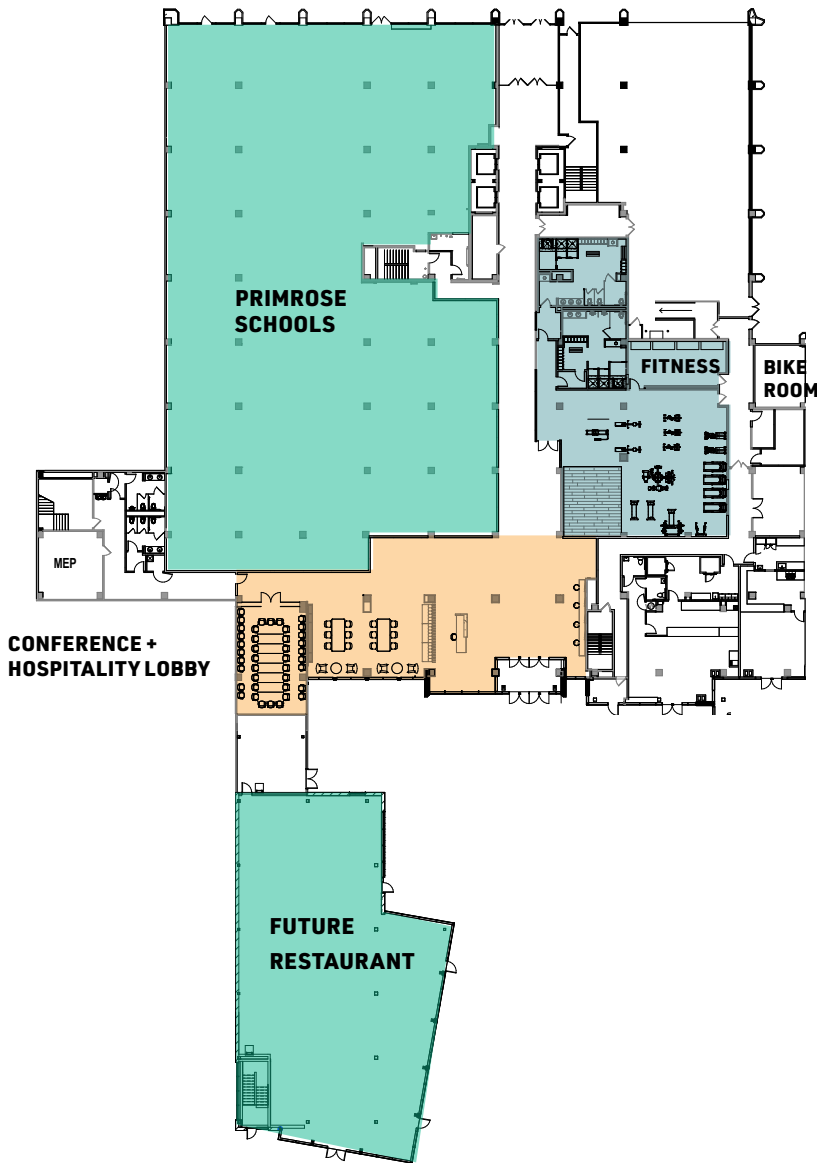


12	LEASED	SUITE 1220 2,944 SF	SUITE 1250 3,745 SF	SUITE 1280 2,504 SF	TOWN HALL
11	SUITE 1100 4,743 SF	SUITE 1150 2,924 SF	SUITE 1135 2,375 SF	SUITE 1165 3,685 SF	LEASED TOWN HALL
10	LEASED				
9	LEASED				
8	SUITE 810 3,896 SF	SUITE 820 4,035 SF	SUITE 830 5,284 SF	SUITE 840 3,895 SF	
7	SUITE 710 1,622 SF	SUITE 720 2,500 SF	LEASED	SUITE 740 2,204 SF	LEASED
6	SUITE 610 4,200 SF	SUITE 620 5,820 SF	LEASED	LEASED	
5	5TH FLOOR 17,360 SF				
4	4TH FLOOR 17,360 SF				
3	3RD FLOOR 16,586 SF				
2	2ND FLOOR 35,358 SF				
1	FITNESS CENTER & CONFERENCE ROOM			RETAIL	

Gary Cook      Stoddie Nibley      Ashley Superville  
703.284.3379      703.284.5884      703.284.3628  
gcook@lpc.com      snibley@lpc.com      asuperville@lpc.com

**Lincoln**

**2461 S CLARK**

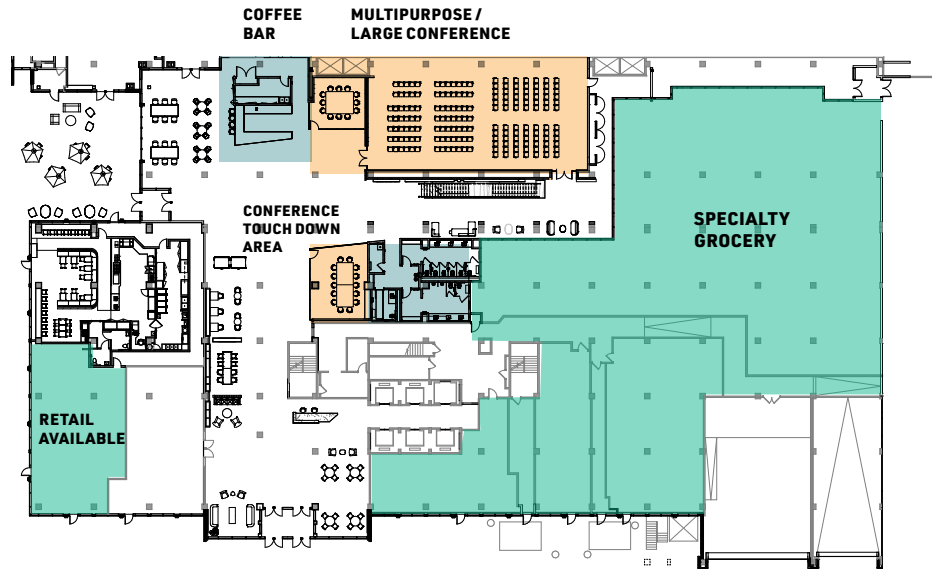


Gary Cook      Stoddie Nibley      Ashley Superville  
703.284.3379      703.284.5884      703.284.3628  
gcook@lpc.com      snibley@lpc.com      asuperville@lpc.com

**Lincoln**

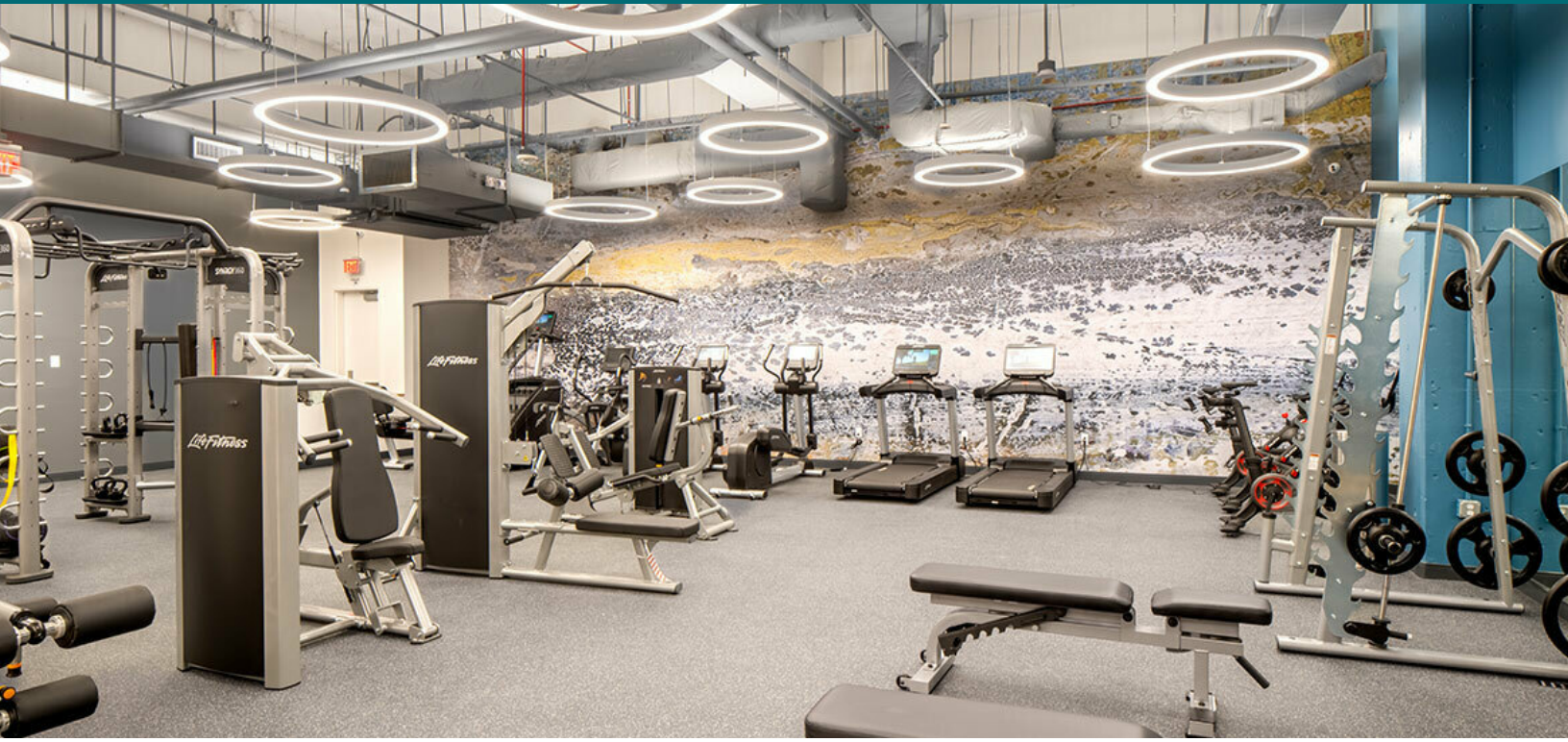


**2450 CRYSTAL**



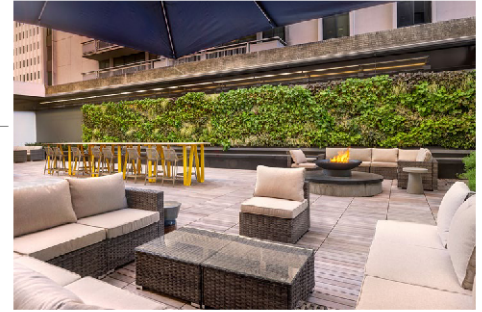
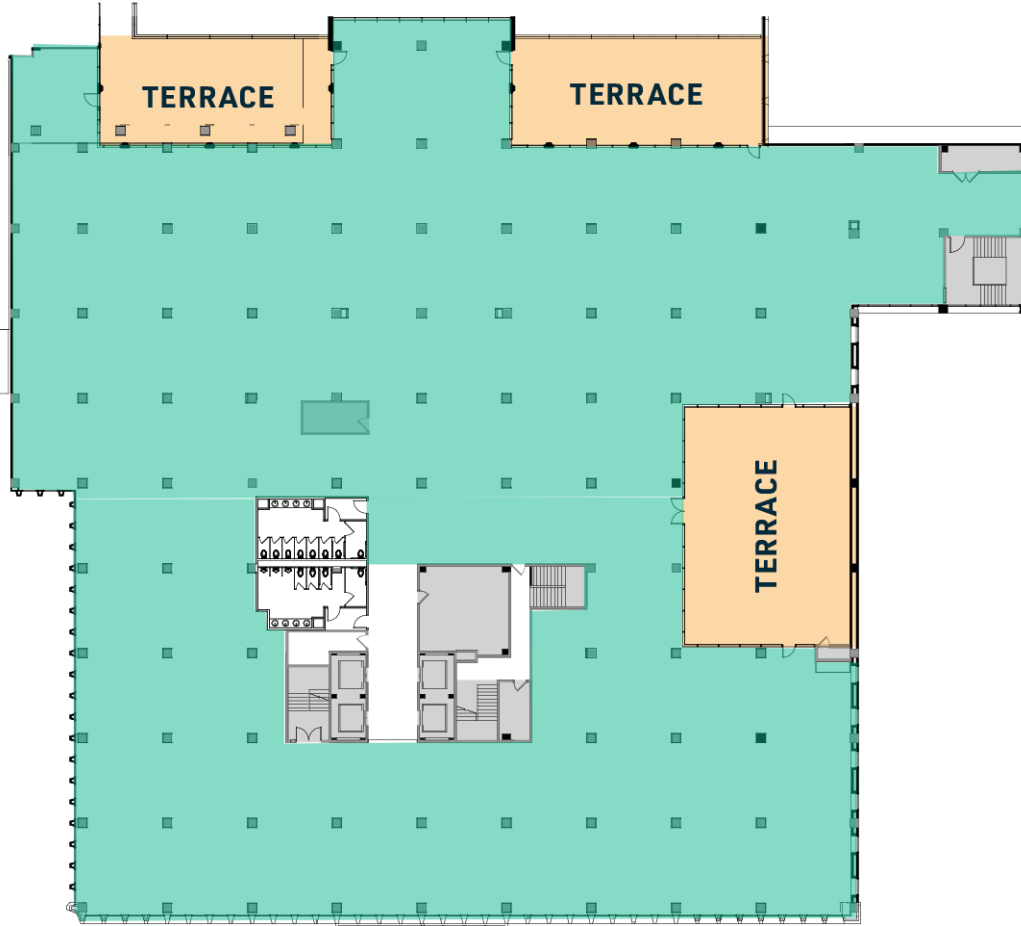
<b>Gary Cook</b>	<b>Stoddie Nibley</b>	<b>Ashley Superville</b>
703.284.3379	703.284.5884	703.284.3628
gcook@lpc.com	snibley@lpc.com	asuperville@lpc.com

**Lincoln**



**Gary Cook**      **Stoddie Nibley**      **Ashley Superville**  
703.284.3379      703.284.5884      703.284.3628  
gcook@lpc.com      snibley@lpc.com      asuperville@lpc.com

**Lincoln**

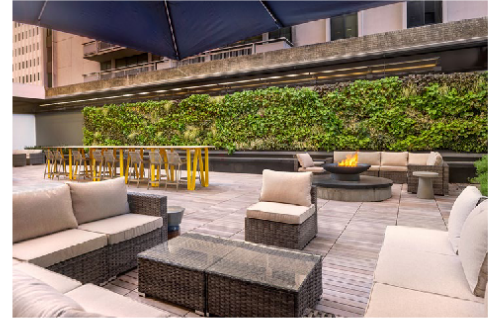
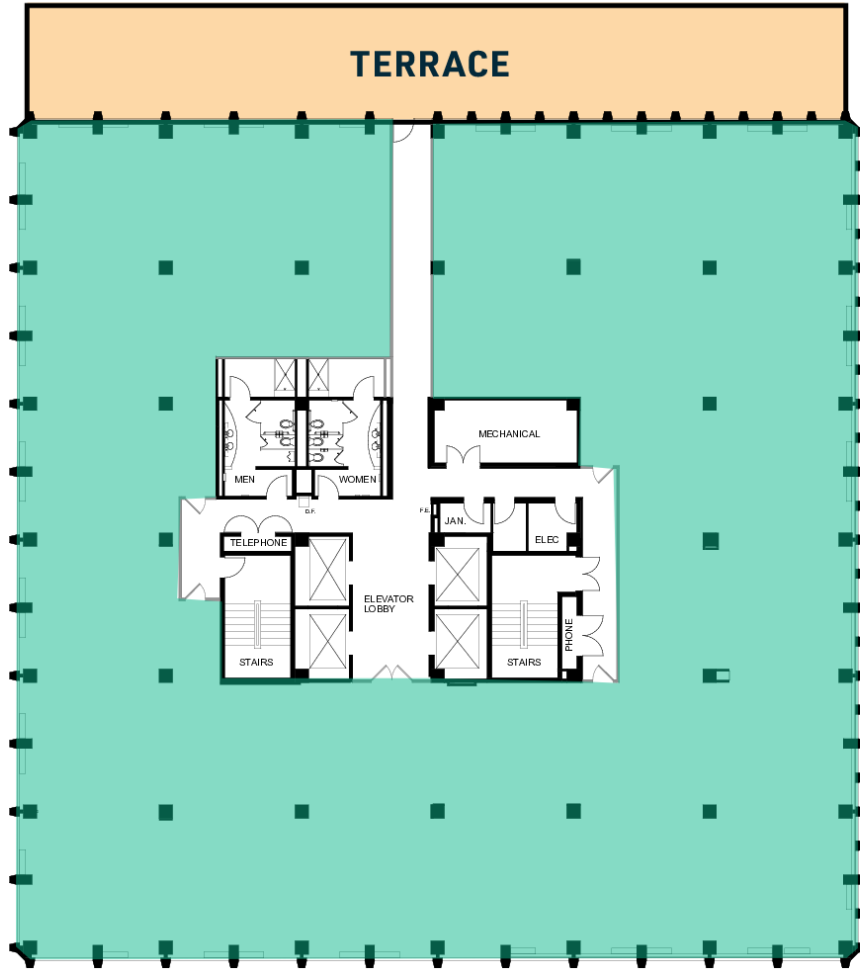


**OUTDOOR TERRACE**

Suite	Size	Description
■ Suite 200	35,358 SF	Available Immediately

**Gary Cook**      **Stoddie Nibley**      **Ashley Superville**  
 703.284.3379      703.284.5884      703.284.3628  
 gcook@lpc.com      snibley@lpc.com      asuperville@lpc.com



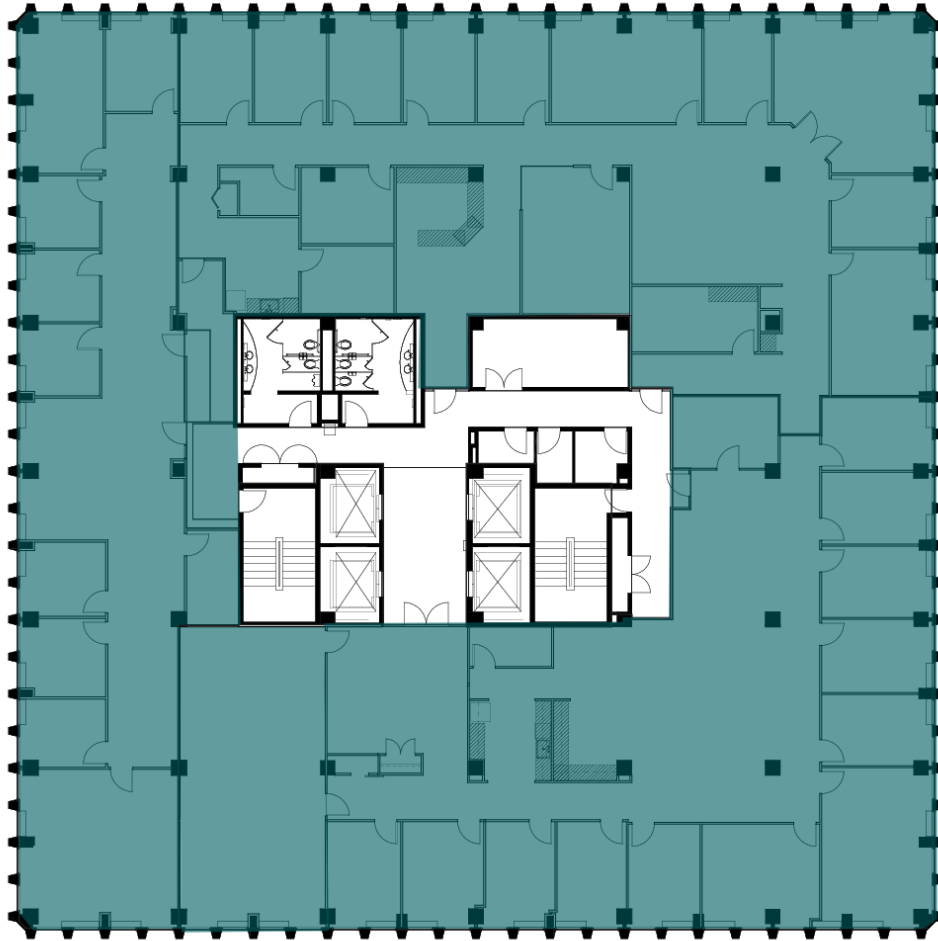


**OUTDOOR TERRACE**

Suite	Size	Description
■ Suite 300	16,586 SF	Available Immediately

**Gary Cook**      **Stoddie Nibley**      **Ashley Superville**  
 703.284.3379      703.284.5884      703.284.3628  
 gcook@lpc.com      snibley@lpc.com      asuperville@lpc.com

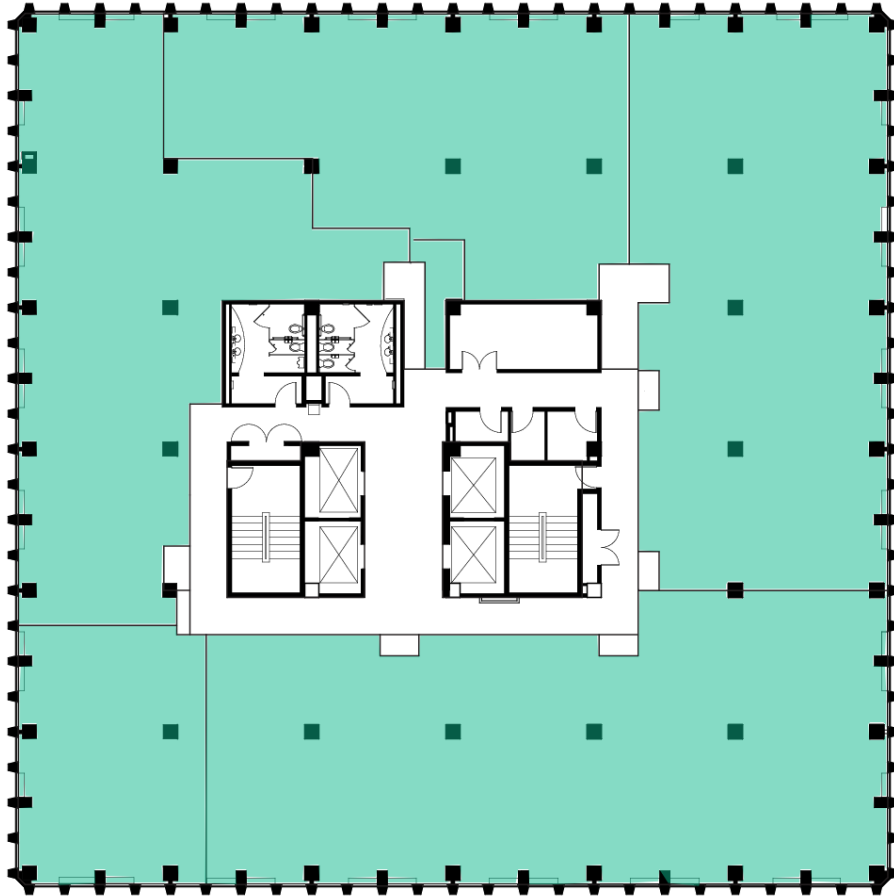




Suite	Size	Description
■ Suite 400	17,360 SF	Available Immediately

**Gary Cook**      **Stoddie Nibley**      **Ashley Superville**  
 703.284.3379      703.284.5884      703.284.3628  
 gcook@lpc.com      snibley@lpc.com      asuperville@lpc.com

**Lincoln**



Suite	Size	Description
■ Suite 500	17,360 SF	Available Immediately

**Gary Cook**      **Stoddie Nibley**      **Ashley Superville**  
 703.284.3379      703.284.5884      703.284.3628  
 gcook@lpc.com      snibley@lpc.com      asuperville@lpc.com

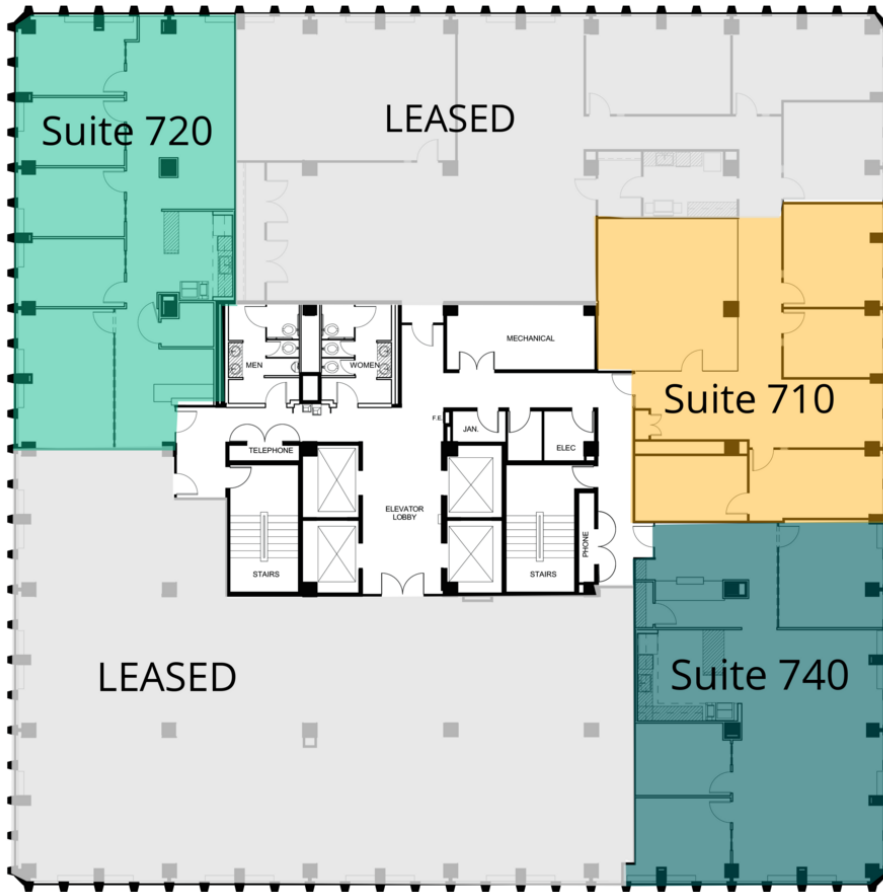
**Lincoln**



Suite	Size	Description
■ Suite 610	4,200 SF	Available Immediately
■ Suite 620	5,820 SF	Available Immediately

**Gary Cook**      **Stoddie Nibley**      **Ashley Superville**  
 703.284.3379      703.284.5884      703.284.3628  
 gcook@lpc.com      snibley@lpc.com      asuperville@lpc.com

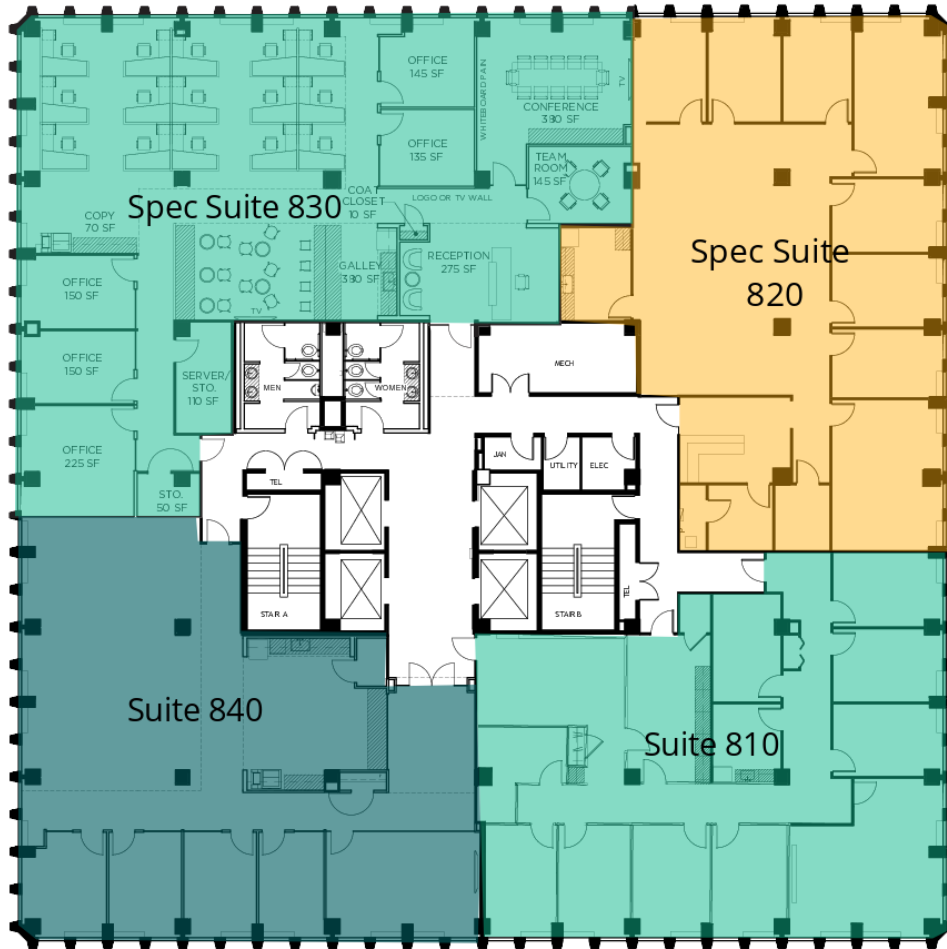
**Lincoln**



Suite	Size	Description
■ Suite 710	1,622 SF	Available Immediately
■ Suite 720	2,500 SF	Available Immediately
■ Suite 740	2,204 SF	Available Immediately

**Gary Cook**      **Stoddie Nibley**      **Ashley Superville**  
703.284.3379      703.284.5884      703.284.3628  
gcook@lpc.com      snibley@lpc.com      asuperville@lpc.com

**Lincoln**



Suite	Size	Description
■ Suite 810	3,896 SF	Available Immediately
■ Spec Suite 820	4,035 SF	Available Immediately
■ Spec Suite 830	5,284 SF	Available Immediately. Fully Furnished Spec Suite.
■ Suite 840	3,895 SF	Available Immediately

**Gary Cook**      **Stoddie Nibley**      **Ashley Superville**  
703.284.3379      703.284.5884      703.284.3628  
gcook@lpc.com      snibley@lpc.com      asuperville@lpc.com

**Lincoln**



**Gary Cook**      **Stoddie Nibley**      **Ashley Superville**  
703.284.3379      703.284.5884      703.284.3628  
gcook@lpc.com      snibley@lpc.com      asuperville@lpc.com

**Lincoln**



# CRYSTAL & CLARK

2461 S. Clark Street, Arlington, VA

## 11TH FLOOR SPEC SUITE & CONCEPT PLAN



**SPEC SUITE 1100**  
4,743 SF



**SPEC SUITE 1135**  
2,375 SF



**FURNISHED SPEC SUITE 1150**  
2,924 SF



### AMENITY AREA

**SPEC SUITE 1165**  
3,685 SF





# CRYSTAL & CLARK

2461 S. Clark Street, Arlington, VA

## 12TH FLOOR SPEC SUITE & CONCEPT PLAN



VIRTUAL TOUR

### SPEC SUITE 1280

2,504 SF



VIRTUAL TOUR

### SPEC SUITE 1220

2,944 SF



VIRTUAL TOUR

### AMENITY AREA

### SPEC SUITE 1250

3,745 SF



**2450 Crystal Drive / 2461 S Clark Street  
Arlington, VA 22202**

**For Leasing Information Contact:**

**Gary Cook**

gcook@lpc.com

703.284.3379

**Stoddie Nibley**

snibley@lpc.com

703.284.5884

**Ashley Superville**

asuperville@lpc.com

703.284.3628

**CRYSTALANDCLARK.COM**

