

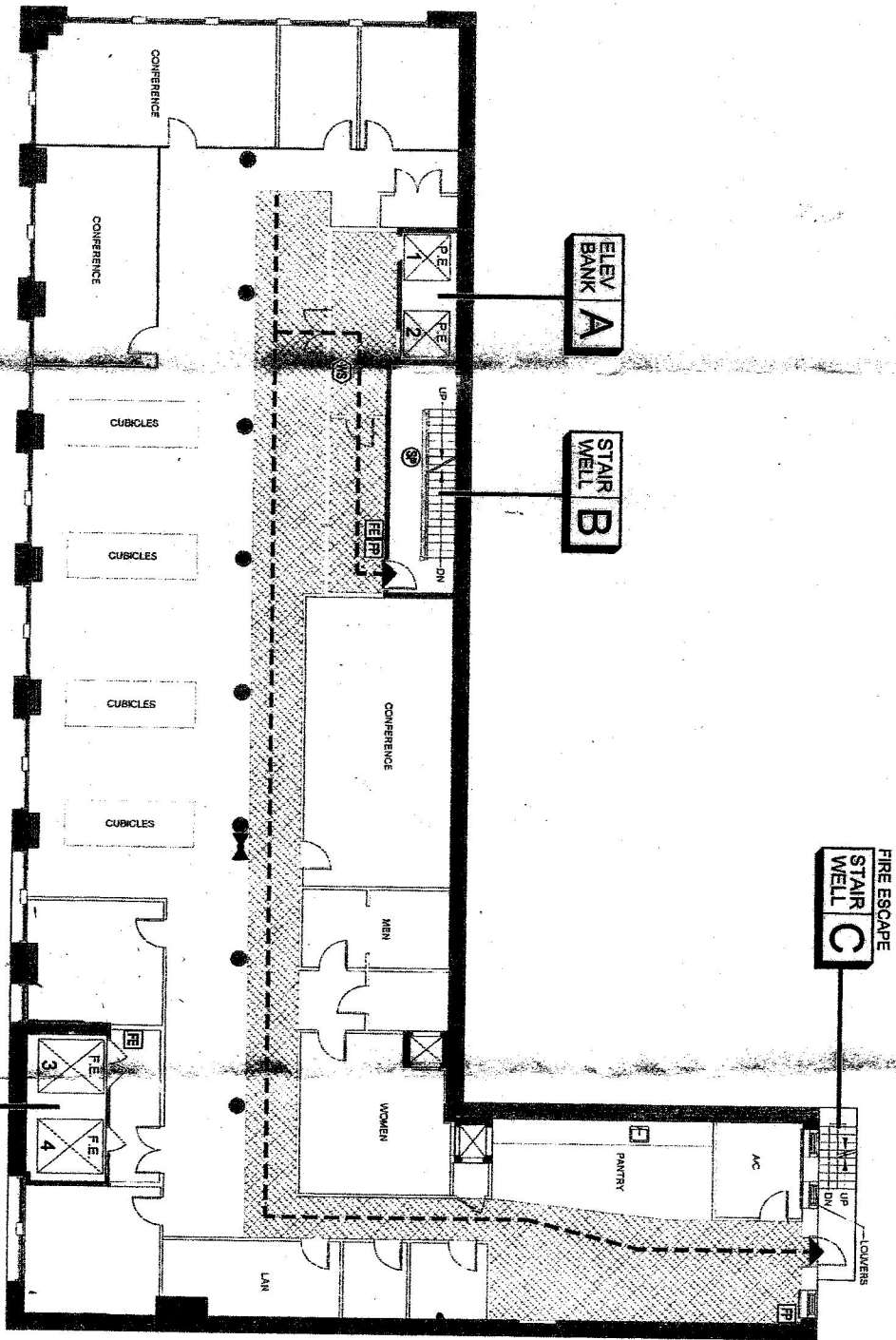


DISCLAIMER: THESE DRAWINGS WERE CREATED FOR EAP AND/OR FIRE SAFETY FILING ONLY. DO NOT SCALE DRAWING. EXISTING CONDITIONS AND DIMENSIONS MAY VARY AND ARE TO BE FIELD VERIFIED.

5TH AVENUE

EAST 16TH STREET

Note: Full Sprinkler Coverage



LEGEND

- As designed on plan.
- Fire Alarm Pull (FAP)
- Fire Extinguisher (FE)
- Standpipe (SP)
- Fire Hose (FH) (with or w/o a hose)
- Fire Hose (FH) (without standpipe hose outlet)
- Warden Station (WS) (fire phone or phone jack)
- Fire Command Station (FCS) (See Standard Floor)
- Fire Dept. Connection (See ground fl. & site plan)
- Sprinkler Valve (SV)
- Standpipe Valve (SPV)
- EXIT - Evacuation Route (urniture, equipment, removable partitions)
- Permanent Partition (non-removable permanent partitions)
- Fire Barrier (permanent walls, walls of assembly, corridors, stairs, equip. rooms)
- In-Building Relocation Areas (IBRAs)
- Sprinkled Areas (blue)
- & Non-sprinkled Areas (green)
- SPRINKLER SYSTEM (See Standard Floor)
- SPRINKLER SYSTEM (See Standard Floor)

NOTE: Not all devices and designations in legend may apply to this building.

NO.	DATE	REVISION/COMMENTS
1	1.13.18	ISSUED FOR PERMIT
2	1.13.18	REVISIONS TO PERMIT
3	02.22.18	REVISIONS TO PERMIT

DRAWING TITLE: **FL-7**
7th Floor
 BUILDING ADDRESS: **85 Fifth Avenue**
New York, N.Y. 10003
 DRAWING DATE: 11/08/12 - 11/12/12
 SIGNED: [Signature]