

18101 VON KARMAN
AVENUE



LAKESHORE

SUITE	RSF	RATE	BUILD-OUT DESCRIPTION	AVAILABILITY
220	5,082	Negotiable	13 offices, 1 conference room, 1 break room	Immediate
300	22,575	Negotiable	Shell Condition	Immediate
400	22,700	Negotiable	19 offices, 3 conference rooms, 4 kitchens	Immediate
600	22,947	Negotiable	28 offices, 5 conference rooms, 1 kitchen, 2 break rooms, open area	Immediate
940	10,361	Negotiable	Open area	Immediate
960	2,256	Negotiable	Spec suite, 2 offices, 1 kitchen	Immediate
970	2,794	Negotiable	Spec suite, 4 offices, 1 conference room, 1 kitchen	Immediate
980	2,577	Negotiable	Spec suite, 1 conference room, 1 kitchen, copy room	Immediate
940/960 970/980	17,935	Negotiable	Spec suites, 6 offices, 2 conference rooms, 3 kitchens, 1 copy room, open area	Immediate
1010	9,122	Negotiable	6 offices, 1 conference room, 1 kitchen	Immediate
1120	2,208	Negotiable	Open workspace, 2 offices, 1 conference room, 1 kitchen	Immediate
1160	3,774	Negotiable	Open workspace, 5 offices, 2 conference rooms, 1 kitchen, 1 copy room	Immediate
1120/1160	5,982	Negotiable	Open workspace, 7 offices, 3 conference rooms, 2 kitchens, 1 copy room	Immediate
1200	5,463	Negotiable	Spec suites, 11 offices, 1 conference room, 1 kitchen	Immediate
1250	14,201	Negotiable	Open workspace, 27 offices, 3 conference rooms, kitchen, 2 restrooms, storage space	Immediate
1400	22,947	Negotiable	Open workspace, 42 offices, 4 conference rooms, 1 kitchen, 2 restrooms, storage space, server room	Immediate
1500	22,947	Negotiable	38 offices, 4 conference rooms, 1 kitchen	Immediate
1900	21,906	Negotiable	Shell Condition	Immediate

ROBERT LAMBERT

949.930.9212

robert.lambert@cushwake.com

Lic. No. 01758074

RICK KAPLAN

949.955.7643

rick.kaplan@cushwake.com

Lic. No. 00863069

MAT MAT GILES

562.310.2692

matmat.giles@cushwake.com

Lic. No. 02181091

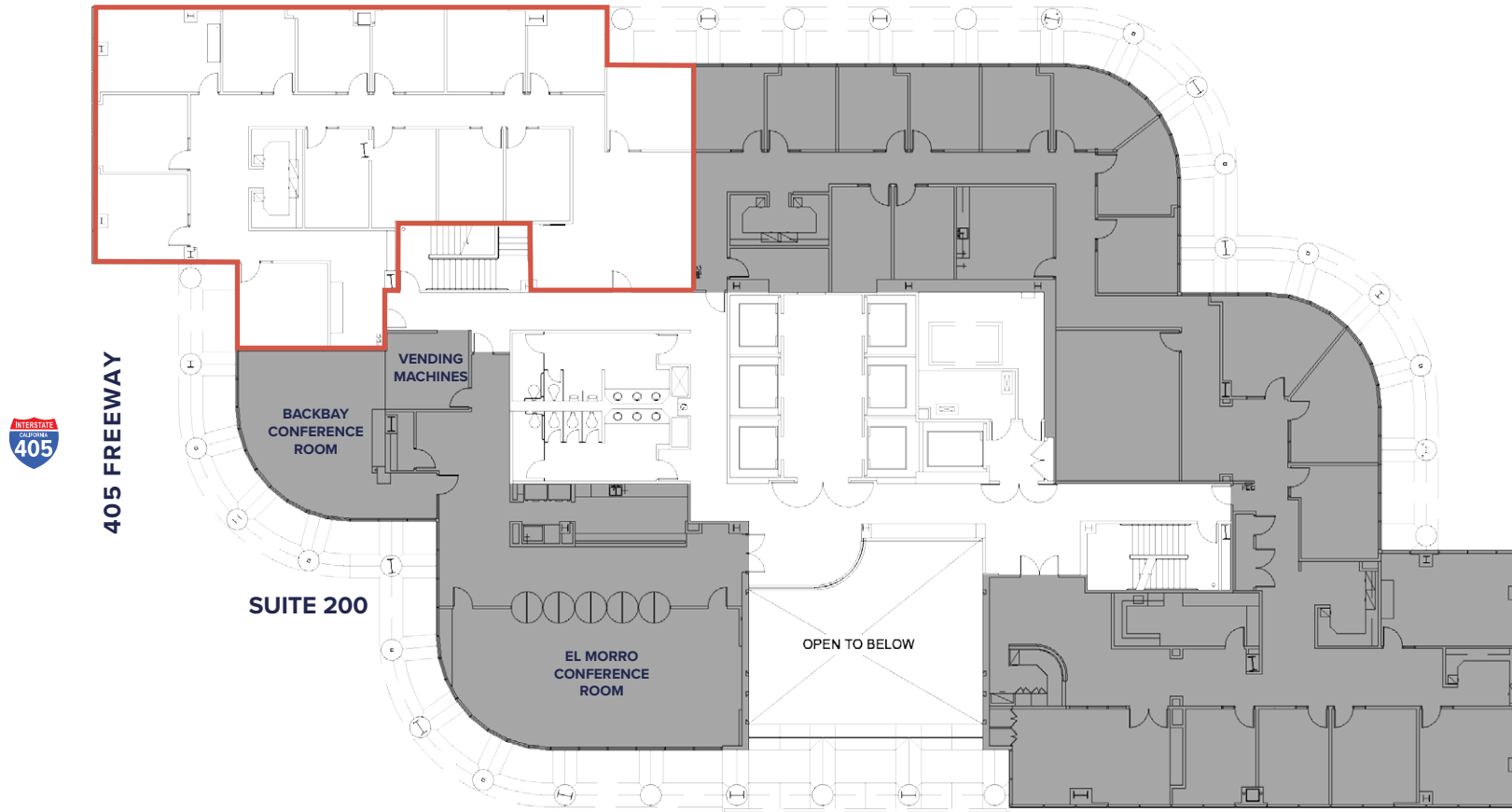


LAKESHORE

18101 VON KARMAN AVENUE

2nd floor

"AVAILABLE"
SUITE 220 | 5,082 RSF



SUITE 230 | 9,786 RSF

AIRPORT



ROBERT LAMBERT
949.930.9212
robert.lambert@cushwake.com
Lic. No. 01758074

RICK KAPLAN
949.955.7643
rick.kaplan@cushwake.com
Lic. No. 00863069

MAT MAT GILES
562.310.2692
matmat.giles@cushwake.com
Lic. No. 02181091

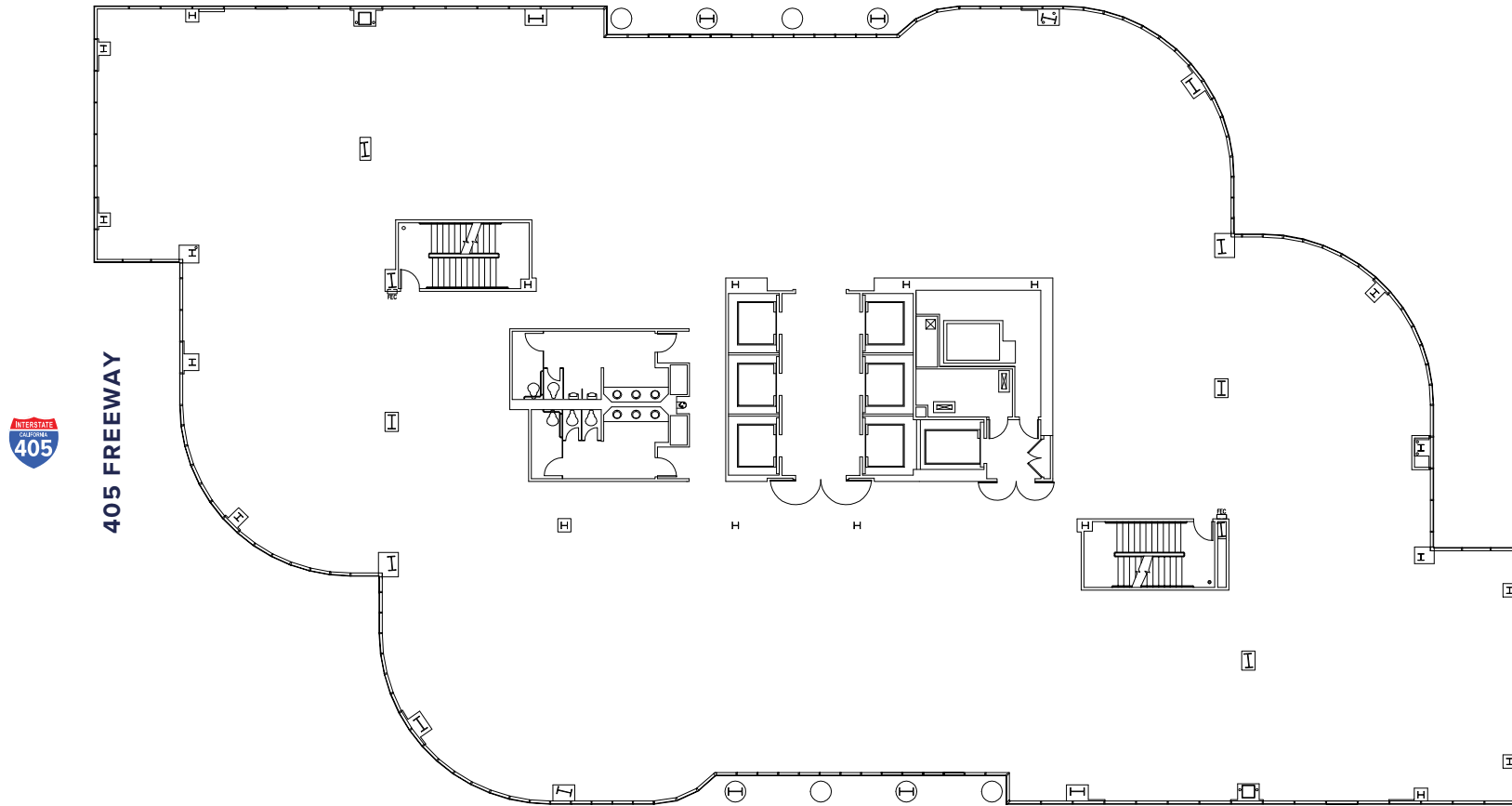


LAKESHORE

18101 VON KARMAN AVENUE

3rd floor

"AVAILABLE"
SUITE 300 | 22,575 RSF



AIRPORT



ROBERT LAMBERT
949.930.9212
robert.lambert@cushwake.com
Lic. No. 01758074

RICK KAPLAN
949.955.7643
rick.kaplan@cushwake.com
Lic. No. 00863069

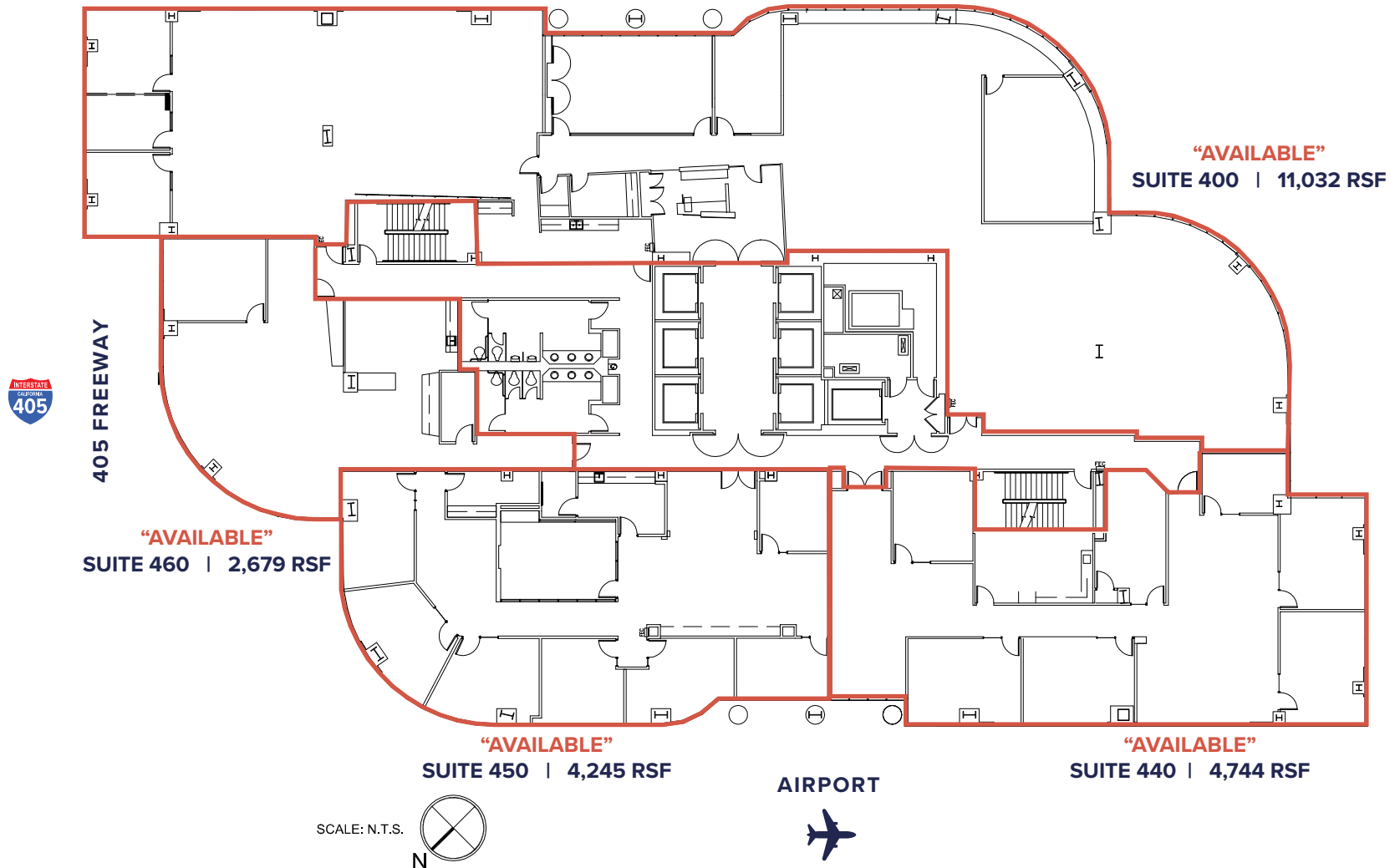
MAT MAT GILES
562.310.2692
matmat.giles@cushwake.com
Lic. No. 02181091



LAKESHORE

18101 VON KARMAN AVENUE

4th floor



ROBERT LAMBERT
949.930.9212
robert.lambert@cushwake.com
Lic. No. 01758074

RICK KAPLAN
949.955.7643
rick.kaplan@cushwake.com
Lic. No. 00863069

MAT MAT GILES
562.310.2692
matmat.giles@cushwake.com
Lic. No. 02181091

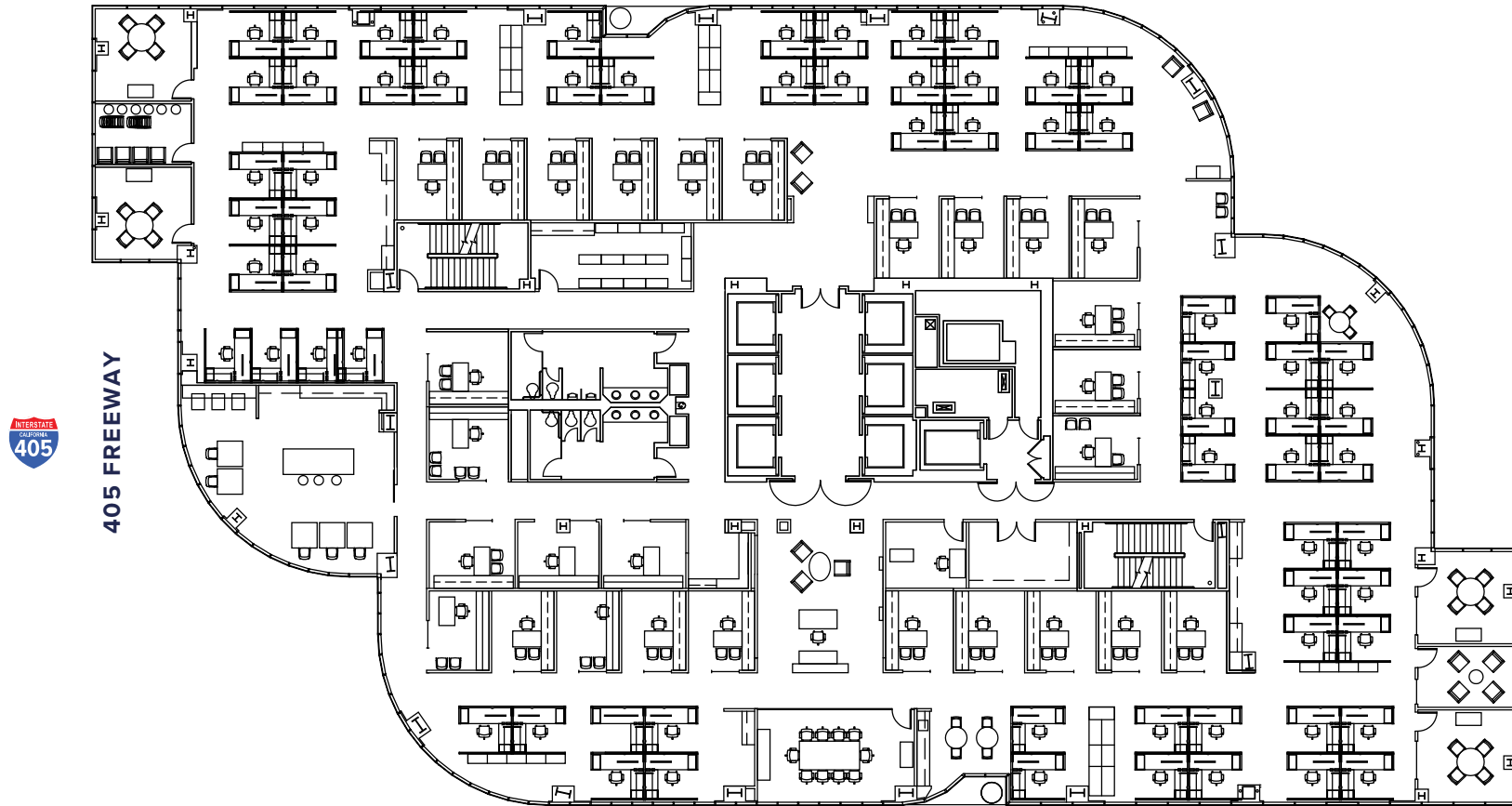


LAKESHORE

18101 VON KARMAN AVENUE

6th floor

"AVAILABLE"
SUITE 600 | 22,947 RSF



405 FREEWAY

AIRPORT



SCALE: N.T.S.



ROBERT LAMBERT
949.930.9212
robert.lambert@cushwake.com
Lic. No. 01758074

RICK KAPLAN
949.955.7643
rick.kaplan@cushwake.com
Lic. No. 00863069

MAT MAT GILES
562.310.2692
matmat.giles@cushwake.com
Lic. No. 02181091



LAKESHORE

18101 VON KARMAN AVENUE

9th floor

***NOTE: SUITES 980 & 970 CAN BE COMBINED
TOTAL | 5,361 RSF**

"AVAILABLE"
SUITE 970 | 2,794 RSF

"AVAILABLE"
SUITE 980 | 2,577 RSF

TENANT LOUNGE

SUITE 910 | 2,512 RSF

SUITE 920 | 2,447 RSF

"AVAILABLE"
SUITE 960 | 2,256 RSF

"AVAILABLE"
SUITE 940 | 10,361 RSF

405 FREEWAY



SCALE: N.T.S.



AIRPORT



ROBERT LAMBERT
949.930.9212
robert.lambert@cushwake.com
Lic. No. 01758074

RICK KAPLAN
949.955.7643
rick.kaplan@cushwake.com
Lic. No. 00863069

MAT MAT GILES
562.310.2692
matmat.giles@cushwake.com
Lic. No. 02181091

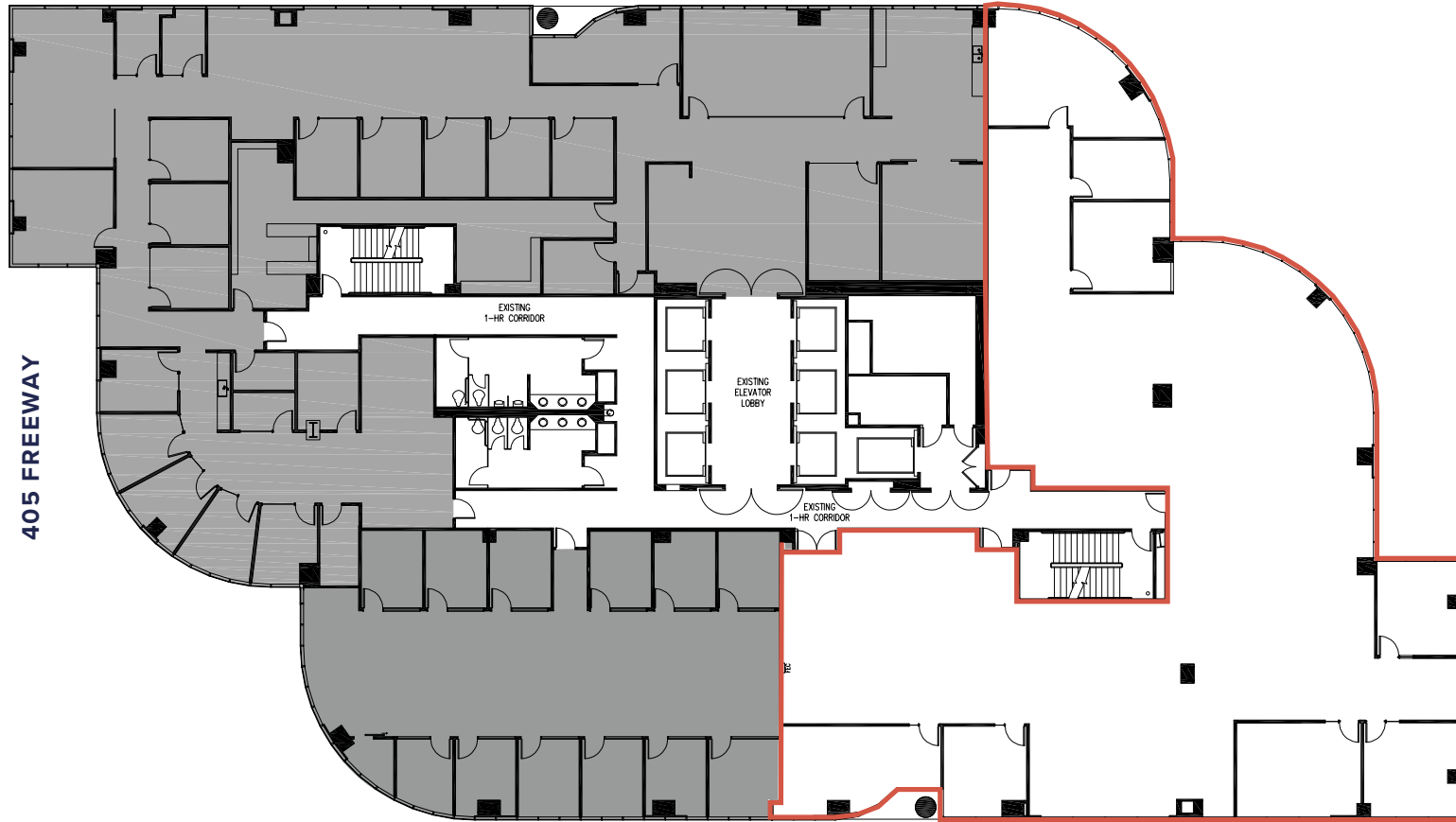


LAKESHORE

18101 VON KARMAN AVENUE

10th floor

SUITE 1000 | 10,171 RSF



405 FREEWAY

SUITE 1050 | 3,653 RSF

AIRPORT

"AVAILABLE"
SUITE 1010 | 9,122 RSF

SCALE: N.T.S.



ROBERT LAMBERT
949.930.9212
robert.lambert@cushwake.com
Lic. No. 01758074

RICK KAPLAN
949.955.7643
rick.kaplan@cushwake.com
Lic. No. 00863069

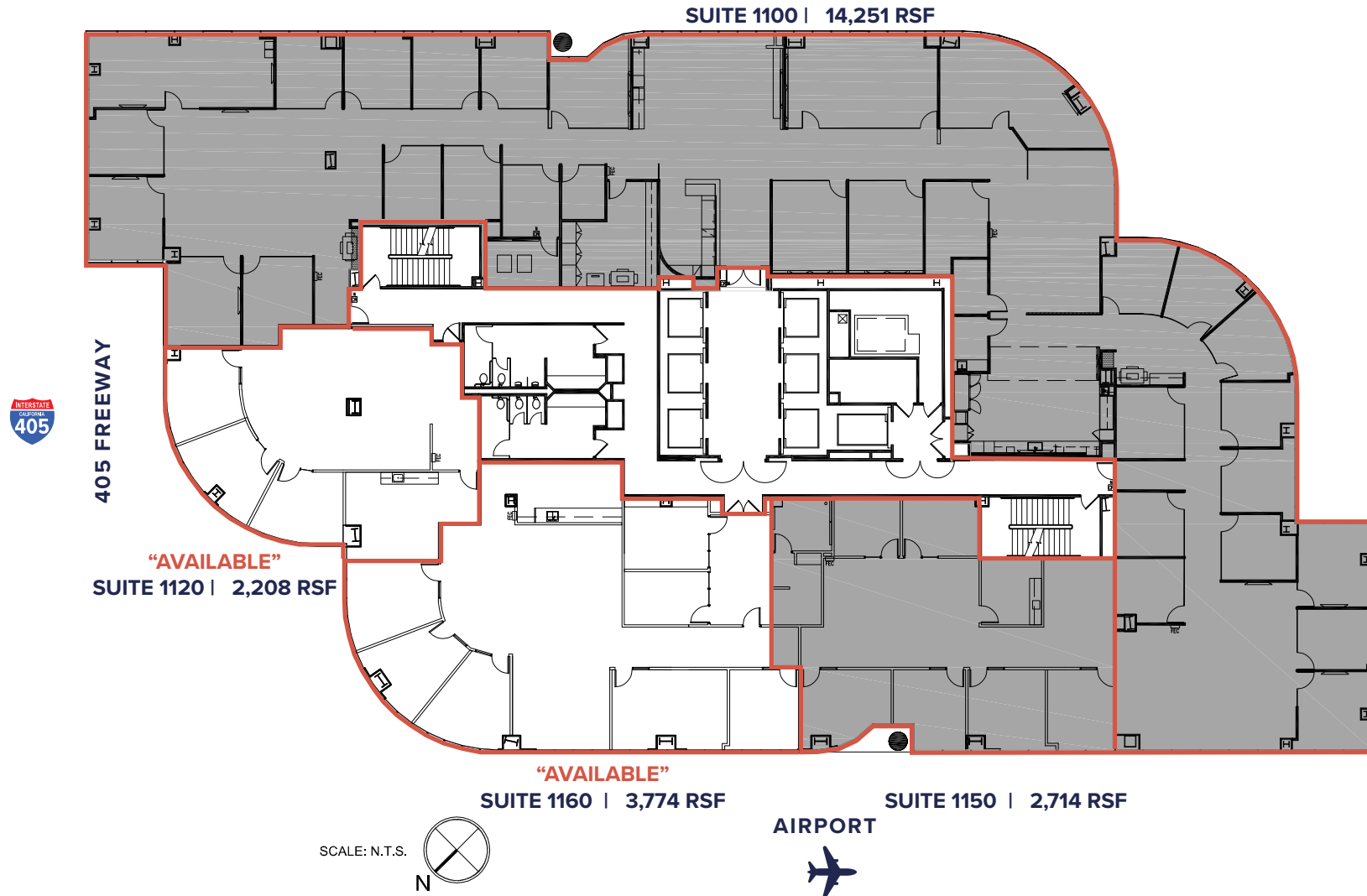
MAT MAT GILES
562.310.2692
matmat.giles@cushwake.com
Lic. No. 02181091



LAKESHORE

18101 VON KARMAN AVENUE

11th floor



ROBERT LAMBERT
949.930.9212
robert.lambert@cushwake.com
Lic. No. 01758074

RICK KAPLAN
949.955.7643
rick.kaplan@cushwake.com
Lic. No. 00863069

MAT MAT GILES
562.310.2692
matmat.giles@cushwake.com
Lic. No. 02181091



LAKESHORE

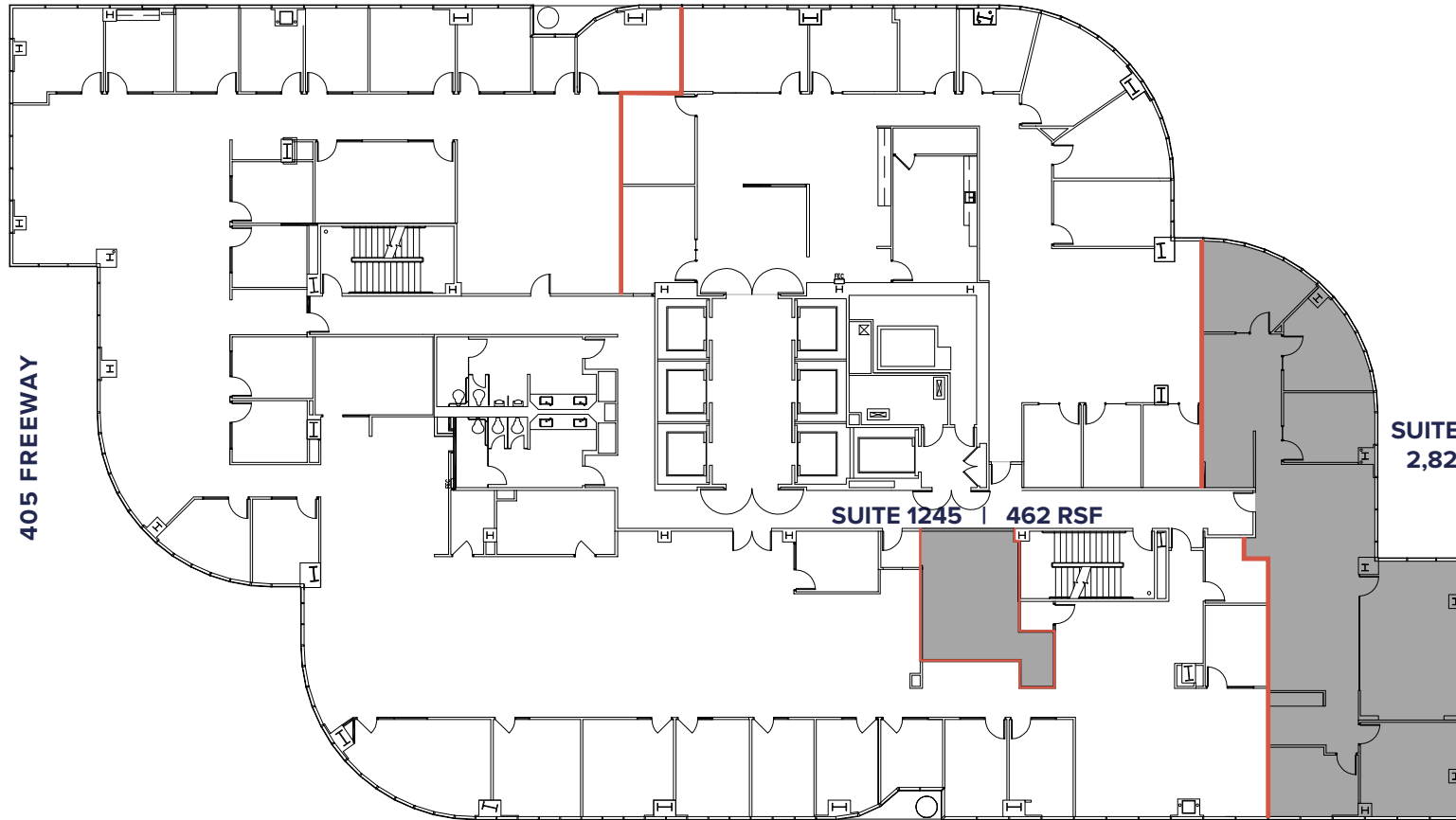
18101 VON KARMAN AVENUE

12th floor



“AVAILABLE”
SUITE 1250 | 14,201 RSF

“AVAILABLE”
SUITE 1200 | 5,463 RSF



405 FREEWAY

SUITE 1220
2,821 RSF

SUITE 1245 | 462 RSF

SCALE: N.T.S.



AIRPORT



ROBERT LAMBERT

949.930.9212

robert.lambert@cushwake.com

Lic. No. 01758074

RICK KAPLAN

949.955.7643

rick.kaplan@cushwake.com

Lic. No. 00863069

MAT MAT GILES

562.310.2692

matmat.giles@cushwake.com

Lic. No. 02181091

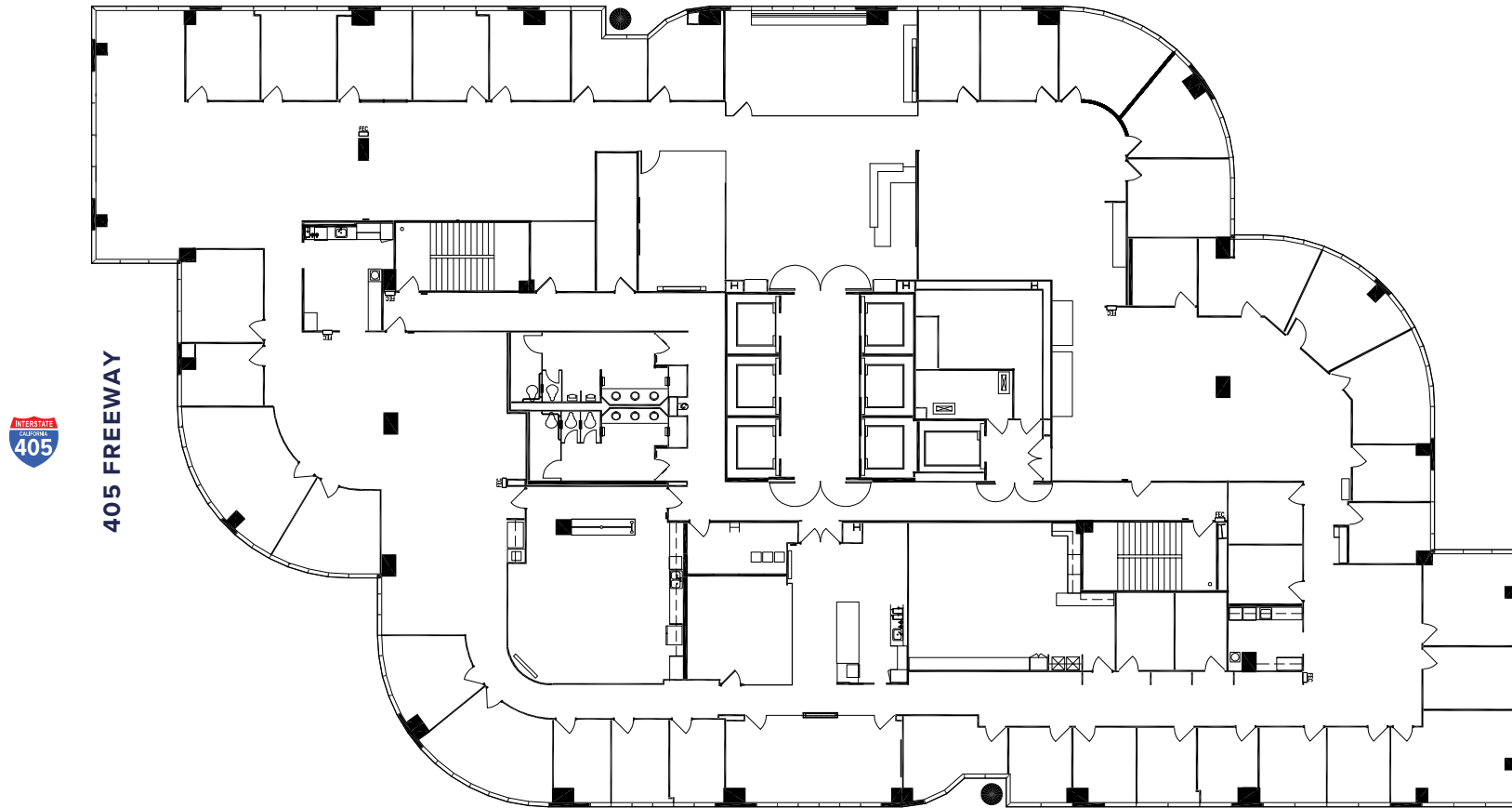


LAKESHORE

18111 VON KARMEN AVENUE

14th floor

"AVAILABLE"
SUITE 1400 | 22,947 RSF



AIRPORT



ROBERT LAMBERT
949.930.9212
robert.lambert@cushwake.com
Lic. No. 01758074

RICK KAPLAN
949.955.7643
rick.kaplan@cushwake.com
Lic. No. 00863069

MAT MAT GILES
562.310.2692
matmat.giles@cushwake.com
Lic. No. 02181091

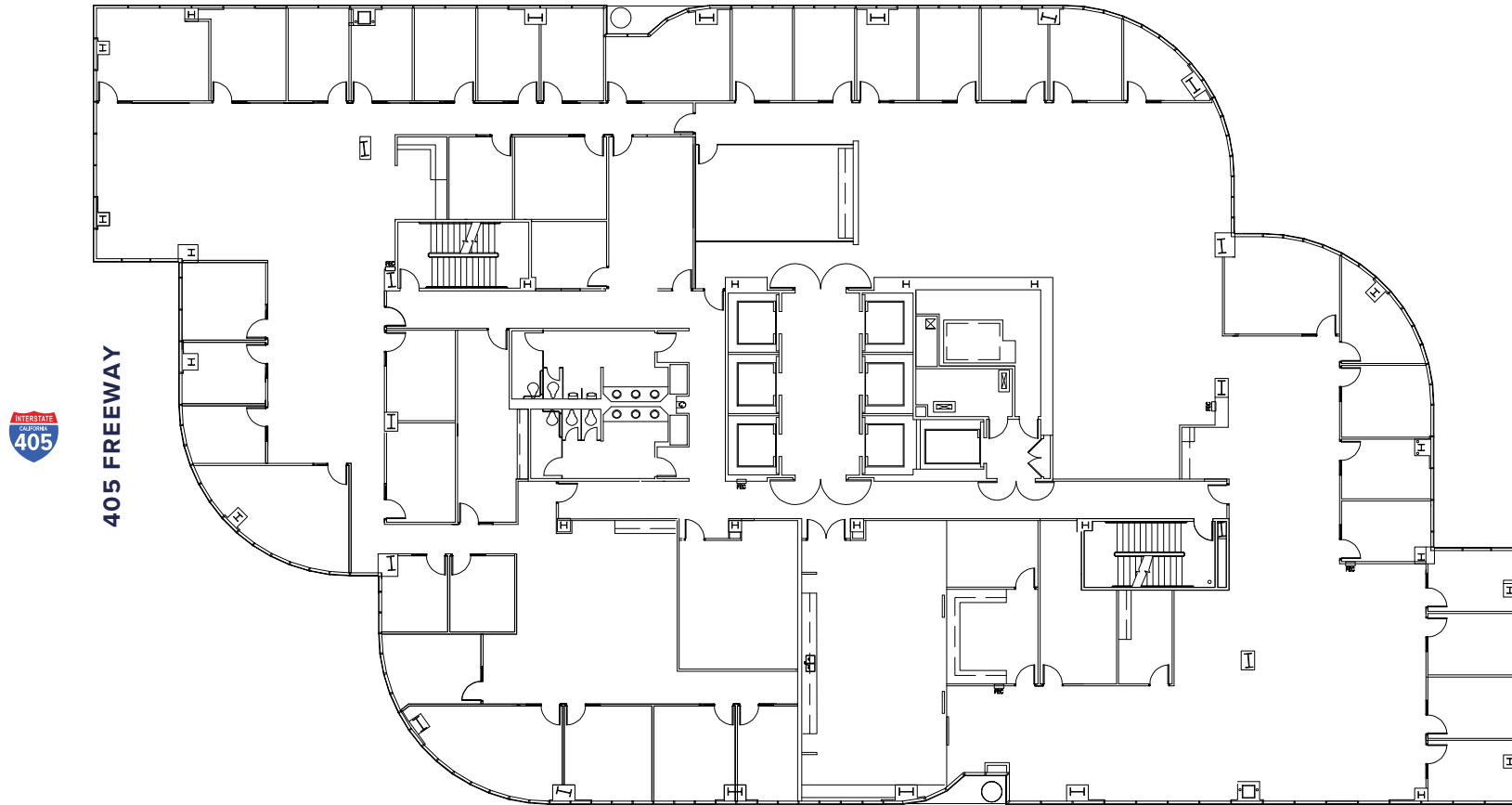


LAKESHORE

18101 VON KARMAN AVENUE

15th floor

"AVAILABLE"
SUITE 1500 | 22,947 RSF



ROBERT LAMBERT
949.930.9212
robert.lambert@cushwake.com
Lic. No. 01758074

RICK KAPLAN
949.955.7643
rick.kaplan@cushwake.com
Lic. No. 00863069

MAT MAT GILES
562.310.2692
matmat.giles@cushwake.com
Lic. No. 02181091



LAKESHORE

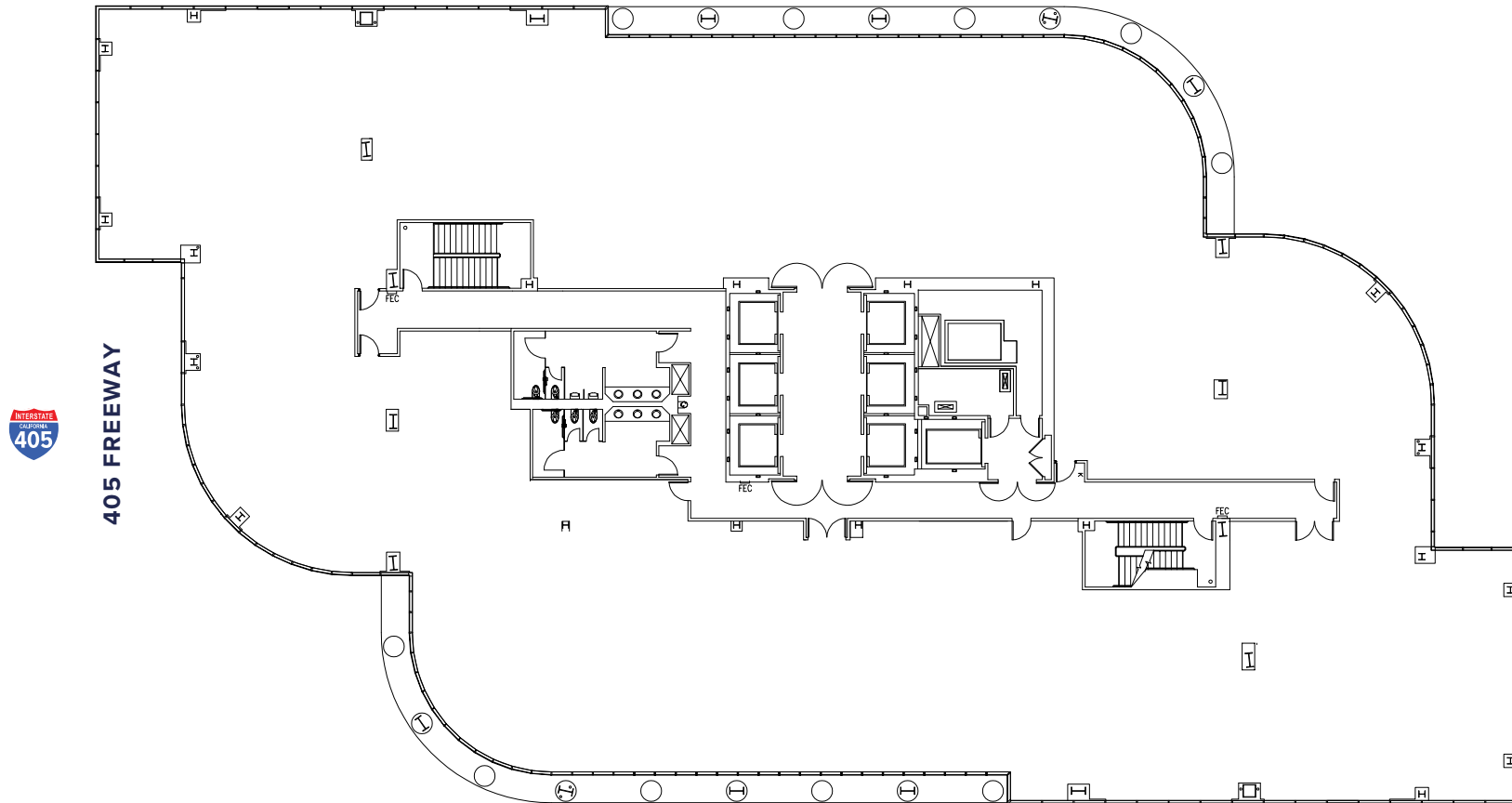
18101 VON KARMAN AVENUE

19th floor



"AVAILABLE"

SUITE 1900 | 21,906 RSF



405 FREEWAY

SCALE: N.T.S.



AIRPORT



ROBERT LAMBERT

949.930.9212

robert.lambert@cushwake.com

Lic. No. 01758074

RICK KAPLAN

949.955.7643

rick.kaplan@cushwake.com

Lic. No. 00863069

MAT MAT GILES

562.310.2692

matmat.giles@cushwake.com

Lic. No. 02181091

