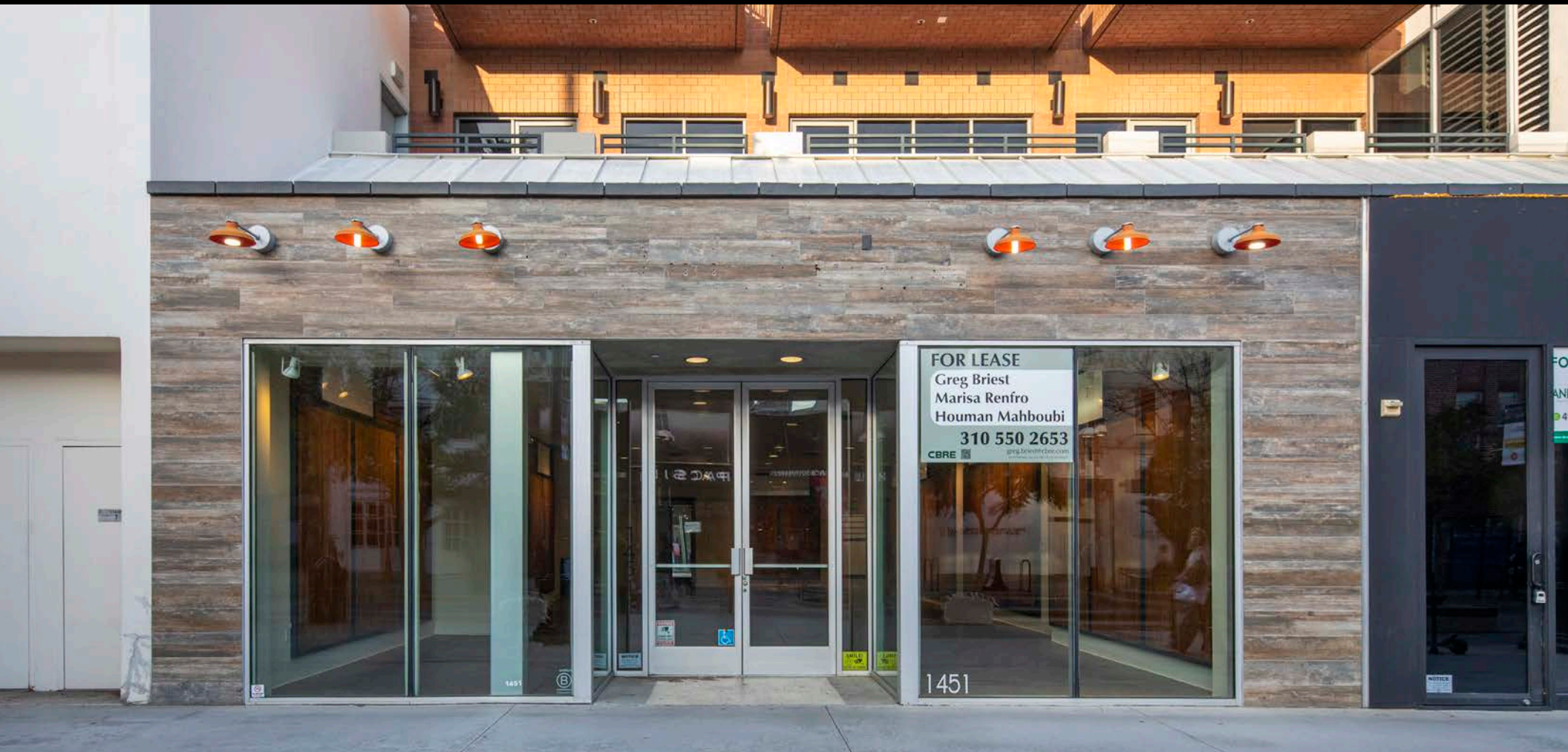


1451 THIRD STREET PROMENADE

SANTA MONICA, CA 90401

RETAIL SPACE FOR LEASE



GREG BRIEST First Vice President | Lic.#01949565 | +1 818 800 4492 | greg.briest@cbre.com

MARISA RENFRO Vice President | Lic.#02178774 | +1 949 922 7278 | marisa.renfro@cbre.com

HOUMAN MAHBOUBI Senior Vice President | Lic.#01450237 | +1 310 550 2651 | houman.mahboubi@cbre.com



WELCOME TO SANTA MONICA

The world-class-city of Santa Monica has long offered retailers of the west coast a prime destination rich in residential population and consumer markets.

1455 Third Street Promenade sits at the intersection of live and play, positioning itself beside the bustling tourist a traction of Third Street Promenade.

	1 MILE	3 MILES	5 MILES
2023 POPULATION	35,577	168,904	410,782
2023 AVG HOUSEHOLD INCOME	\$159,813	\$180,566	\$175,786
2023 HOUSEHOLDS	20,294	84,264	189,263
2023 PLACE OF WORK	5,329	17,657	34,407 (BUSINESSES)
	44,552	138,233	371,959 (EMPLOYEES)

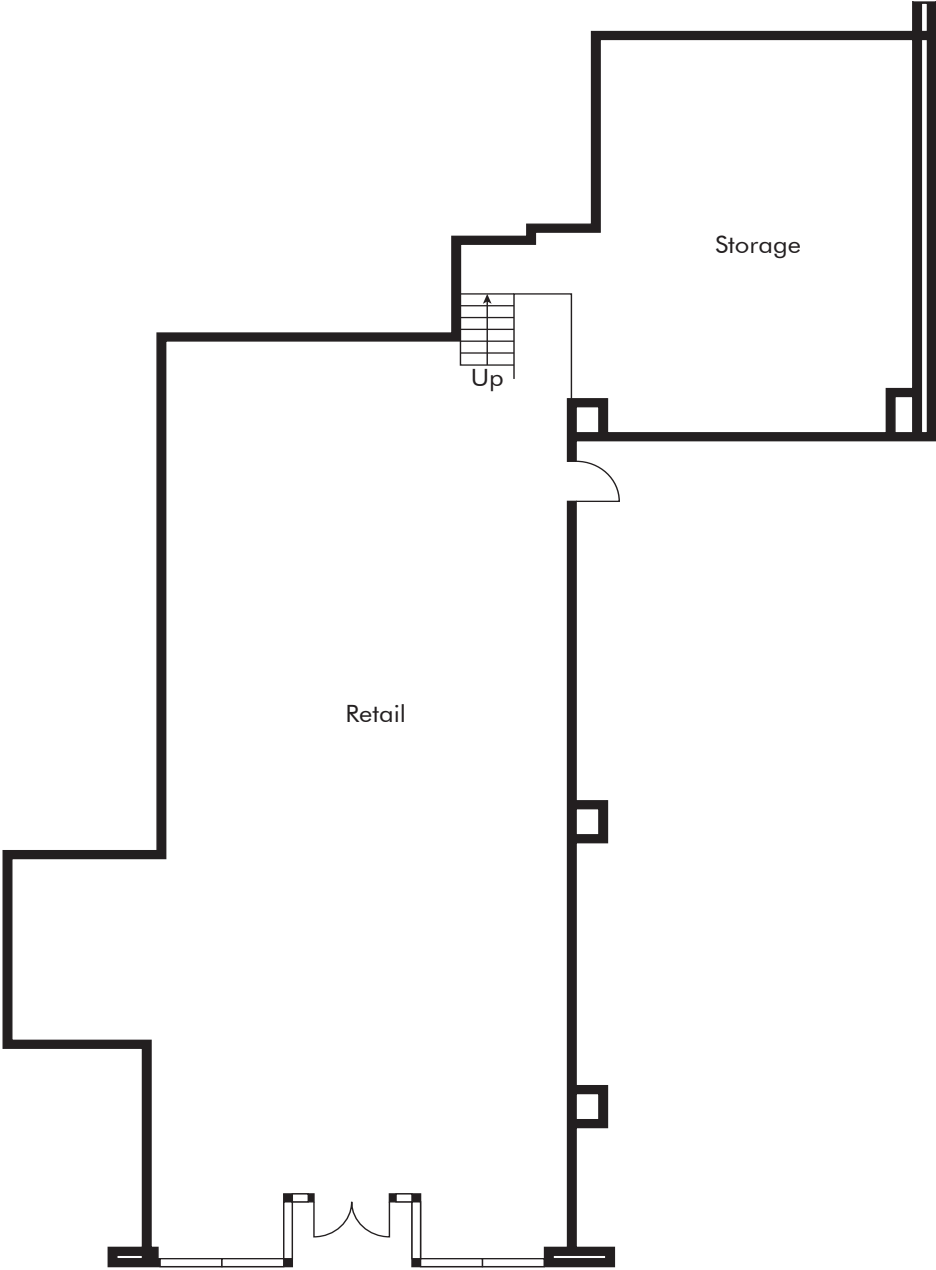


1451 THIRD STREET PROMENADE PROPERTY HIGHLIGHTS

USE	Retail Space directly on Third Street Promenade
SIZE	±3,250 RSF Retail
ASKING RATE	Contact Broker
AVAILABLE	Immediately

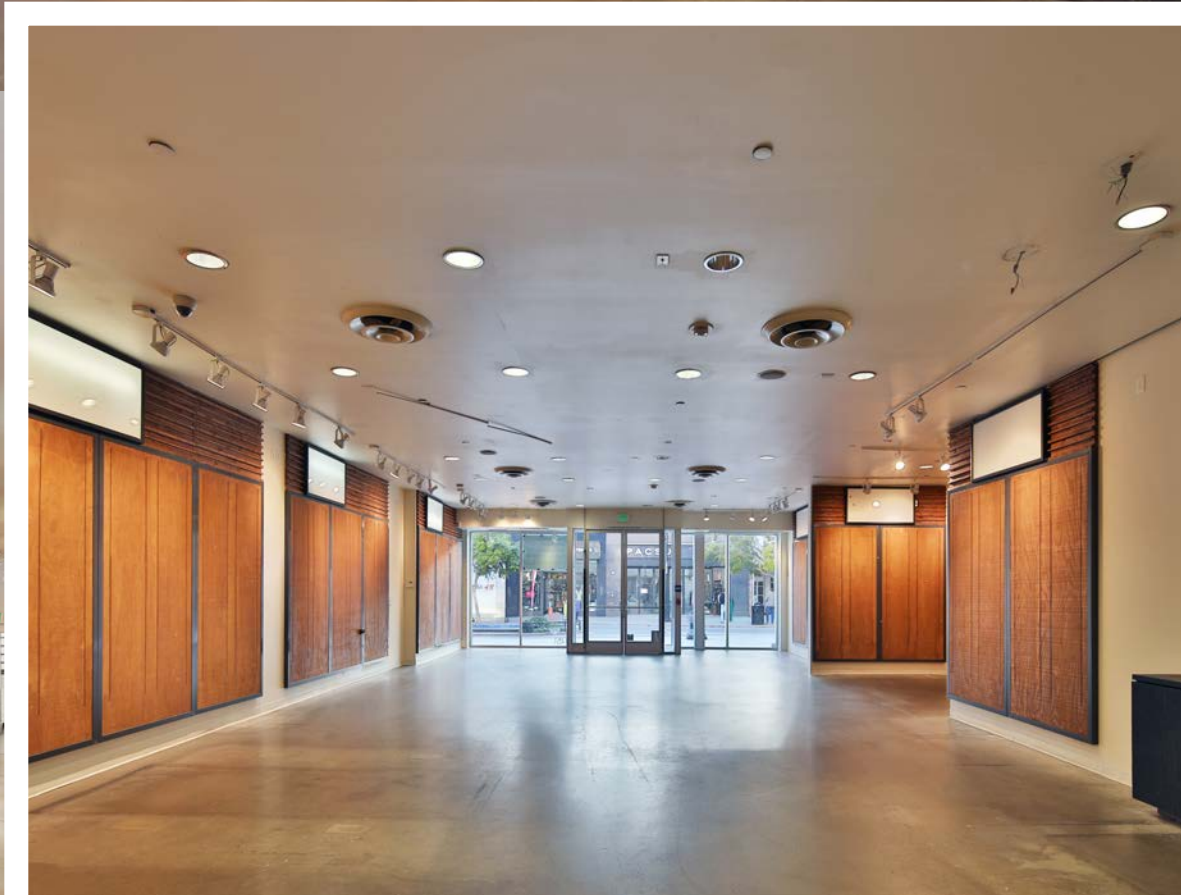
FLOOR PLAN

±3,250 RSF





INTERIOR



LOCATION

Santa Monica Place Mall

- Nike
- Tesla
- Din Tai Fung
- Nordstrom's
- Louis Vuitton
- Rolex
- Coach
- Free People
- Cheesecake Factory

Broadway

- 1460 Google Store
- 1456 McConnell's
- 1452 H&M
- 1450 Santa Monica Souvenirs
- 1446 Pacsun
- 1444 TMNT Restaurant (coming soon)
- 1440 Urban Outfitters
- 1426 Tillys
- 1422 Alo
- 1418 Miniso
- 1416 Vans
- 1412 Bruxie
- 1410 Vacant
- 1404 Vacant
- 1402 Anthropologie
- 1410 Vacant

Santa Monica Blvd

- 1360 HQ Gastropub (coming soon)
- 1356 Starbucks
- 1354 Seasons By
- 1348 Vacant
- 1344 Vacant
- 1340 SM Museum
- 1338 Zara
- 1334 Gallini
- 1322 Sketchers
- 1322 Vacant
- 1322 Johnny Rockets
- 1318 Barnes & Noble
- 1316 The Coffee Bean
- 1312 Sand N Surf
- 1310 AMC/Stefano's Pizza

Arizona Ave

- 231 Gyukaku
- 1260 Odd One Out Boba
- 1260 Vacant
- 1254 Vacant
- 1248 Happy Travelers of Santa Monica
- 1244 Sephora
- 1242 Gold & Diamond Buyers Santa Monica
- 1240 Cabo Cantina
- 1232 Vacant
- 1228 Tazza
- 1222 Vacant
- 1220 Two Bit Circus
- 1218 Chipotle
- 1212 1212 Santa Monica
- 1202 John Reed Fitness

Wilshire Blvd

3RD STREET PROMENADE

Broadway



- Lululemon 1457
- Vacant 1455
- Vacant 1453
- Vacant 1451
- Vacant 1441
- Culto (coming soon) 1437
- Uniqlo (coming soon) 1431
- Vacant 1429
- Henna Shop 1427
- Its Sugar 1427
- Apple 1415
- Aldo 1413
- Lids 1413
- Puzzle Zoo 1411
- Beyond Yoga 1409
- Sunsations Sunglass & Optical 1407
- See Sea 1405
- Raising Cane's (coming soon) 1401

Santa Monica Blvd

- Vacant 1355
- Sand N Surf 1353
- Barney's Beanery 1351
- Wilson 1349
- Patagonia 1345
- Dodgers Clubhouse 1343
- Adidas 1337
- 3 Bella 1335
- Vacant 1333
- Sole & Laces 1331
- Abercrombie & Fitch 1325
- Vacant 1323
- Yogurtland 1321
- Silverlake Ramen 1319
- Holey Moley 1315
- Victoria's Secret 1311
- Vacant 1311
- Pink 1311

Arizona Ave

- Footlocker 301
- Casa Martin 1251
- Vacant 1249
- Vacant 1245
- Vacant 1241
- Istanbul Home 1239
- Ugo Trattoria 1237
- Pickle Pop 1231
- Vacant 1227
- Vacant 1225
- Vacant 1219
- Dr Marten's 1215
- Vacant 1201

Wilshire Blvd



ANTHROPOLOGIE

SEPHORA

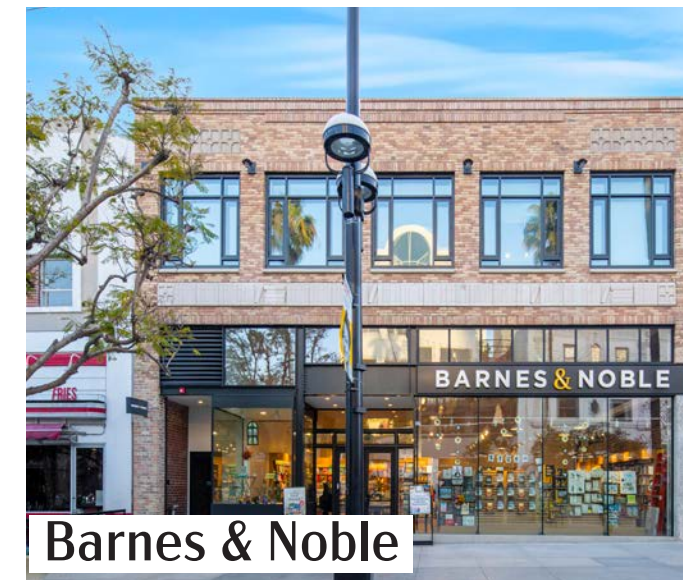
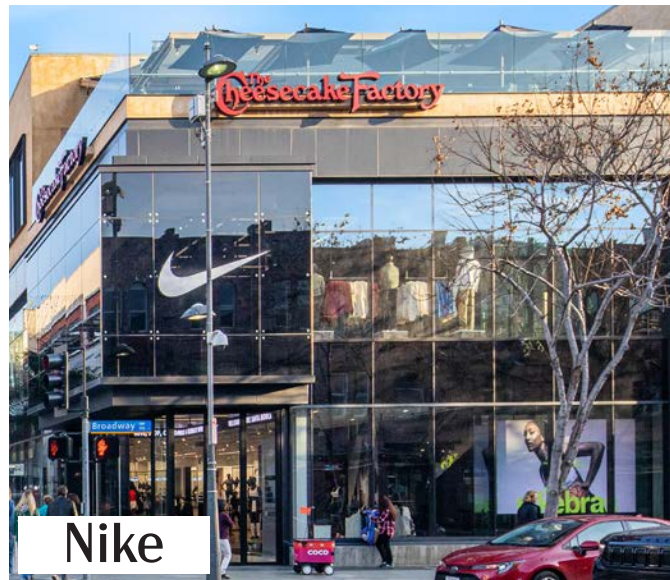
patagonia



NEARBY TENANTS



NEARBY TENANTS



AMENITY MAP





GREG BRIEST First Vice President | Lic.#01949565 | +1 818 800 4492 | greg.briest@cbre.com

MARISA RENFRO Vice President | Lic.#02178774 | +1 949 922 7278 | marisa.renfro@cbre.com

HOUMAN MAHBOUBI Senior Vice President | Lic.#01450237 | +1 310 550 2651 | houman.mahboubi@cbre.com

© 2025 CBRE, Inc. All rights reserved. This information has been obtained from reliable sources but has not been verified for accuracy or completeness. CBRE, Inc. makes no guarantee, representation, or warranty and accepts no responsibility or liability for the accuracy, completeness, or reliability of the information contained herein. You should conduct a careful, independent investigation of the property and verify all information. Any reliance on this information is solely at your own risk. CBRE and the CBRE logo are service marks of CBRE, Inc. All other marks displayed on this document are the property of their respective owners, and the use of such marks does not imply any affiliation with or endorsement of CBRE. Photos herein are the property of their respective owners. Use of these images without the express written consent of the owner is prohibited.

CBRE