

BLACK BULL FARRINGDON EC1

18-22 HATTON WALL

YARD

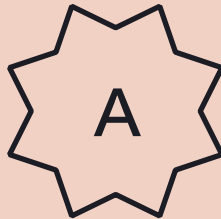
HIGH QUALITY 5,261 PLUG & PLAY OFFICE SPACE TO LET

DESCRIPTION

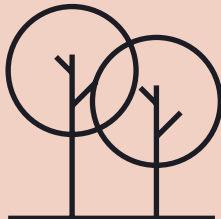
Black Bull Yard is a stunning development set behind the retained façade of a former Victorian warehouse. The building is approached through a private landscaped courtyard with seating, table tennis table and extensive landscaped planting.

The available accommodation comprises 5,261 sq ft on the upper ground floor and is offered fully fitted, and ready to occupy workspace. The office features meeting rooms, breakout/collaboration areas, large kitchen and open plan desking.

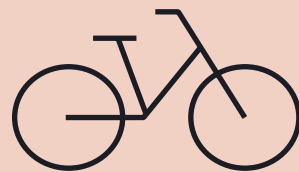
KEY FEATURES



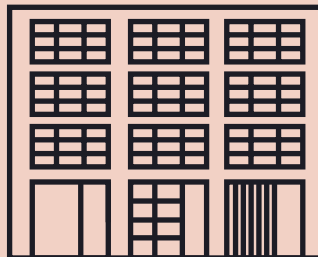
Fully fitted
Cat A Plus space



Landscaped
outside space



End of trip
facilities



Striking Victorian
warehouse



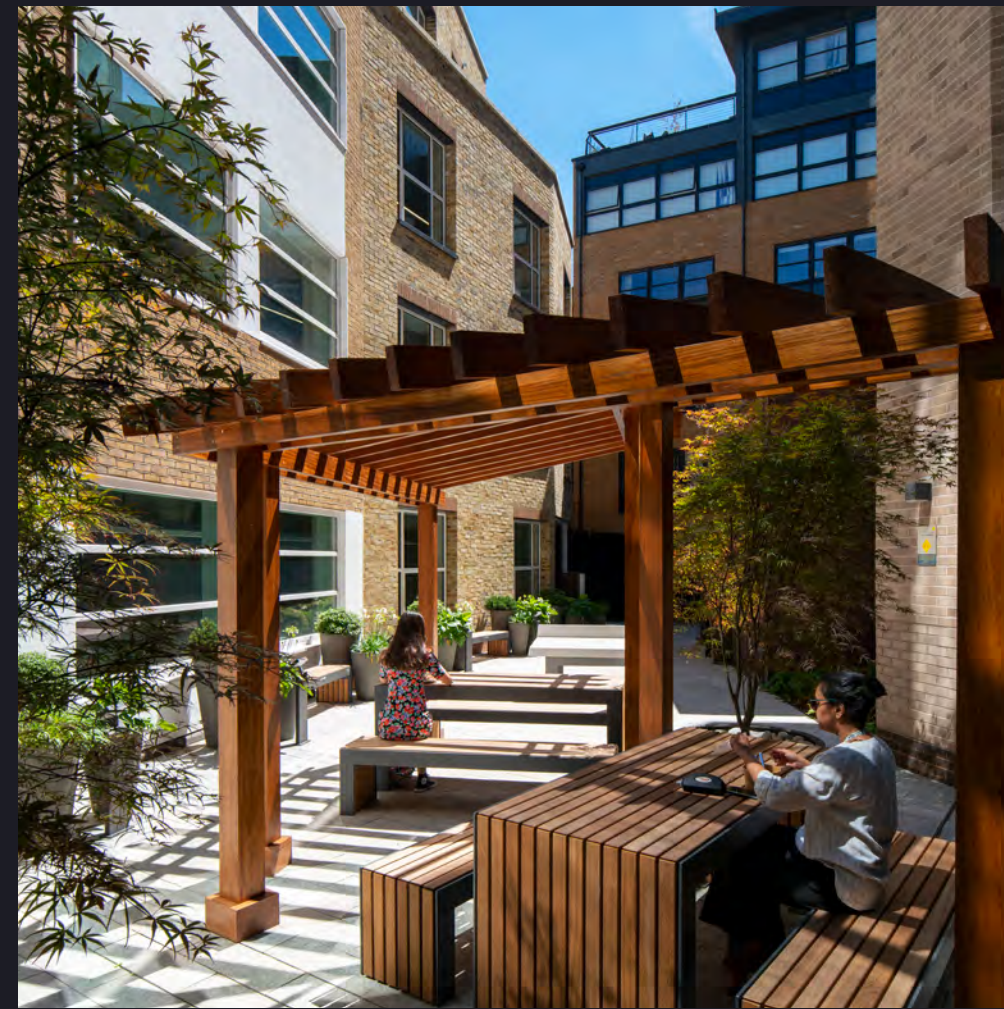
Left:
Façade onto Hatton Wall

Right:
Landscaped courtyard
and main entrance

SPECIFICATION

Beyond the courtyard and contemporary reception, the upper ground floor has been fitted out to a high specification, and provides a considered and inspiring work environment.

Tenant well-being is front and centre, with end of trip facilities and secure bike storage. Whilst the bright open work spaces offers high quality ventilation, there are also generous breakout areas to step away from the desk and collaborate or recharge.



Exposed services including LED lighting



Raised floors and 8 person passenger lift



VRV cooling/heating with separate fresh air supply



EPC A (22) - Energy efficient = low running costs



Extensive outside amenity space



On floor shower facilities



Fibre-enabled via CoreConnect



Secure bike storage

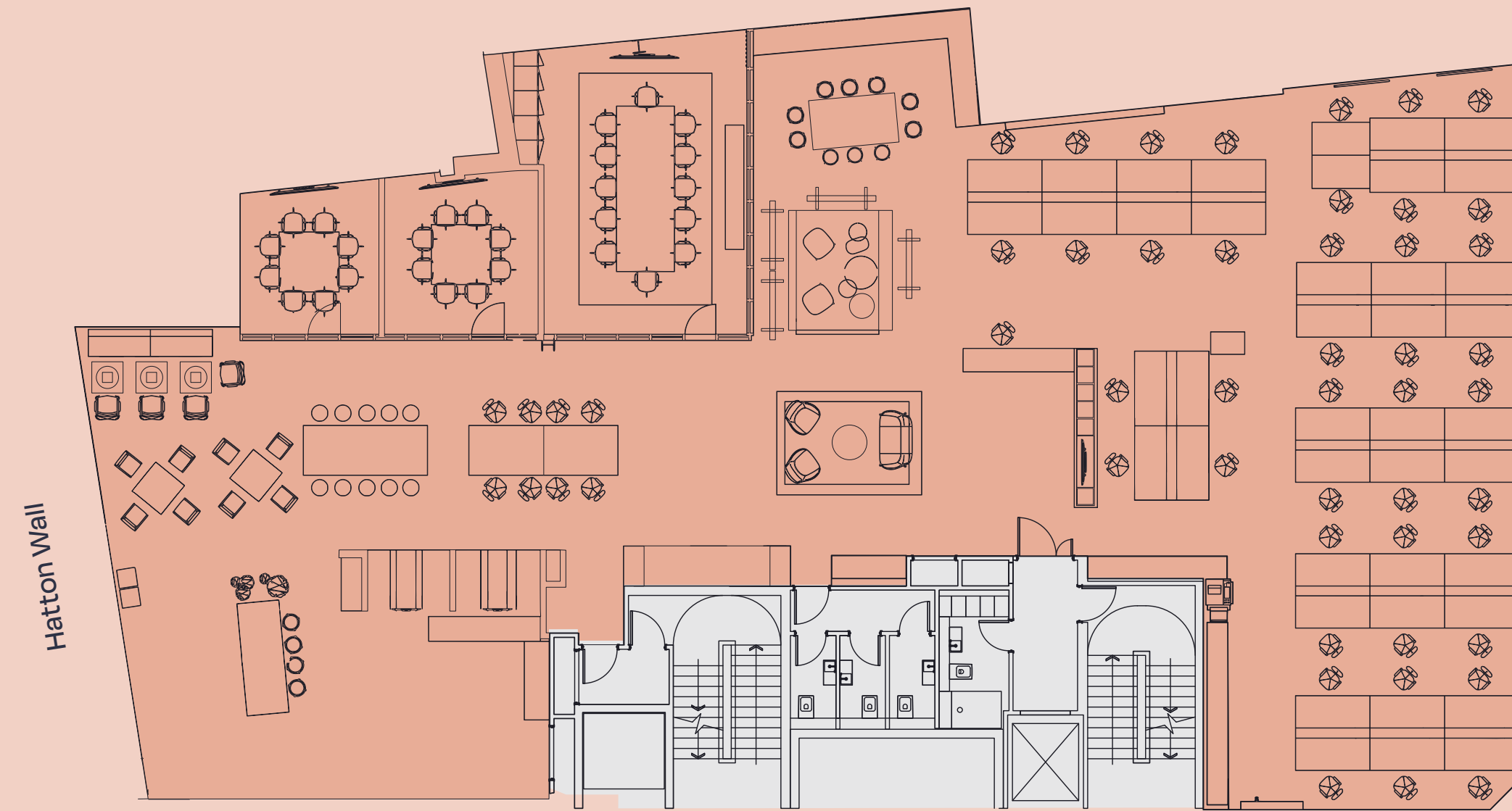






THE SPACE

UPPER GROUND FLOOR – 5,261 SQ FT / 489 SQ M

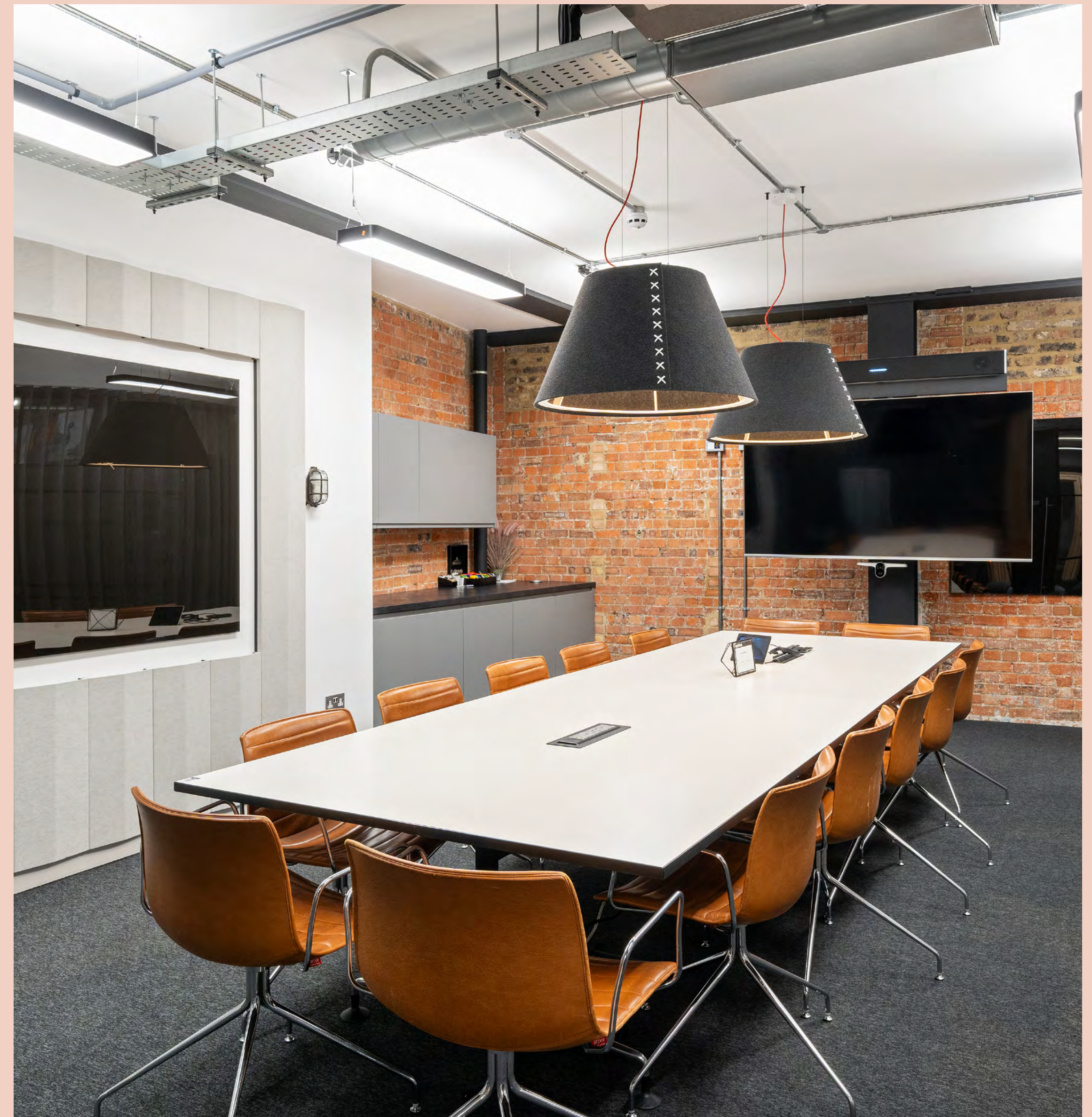


Office
Common

Floor plan not to scale.
For indicative purposes only.



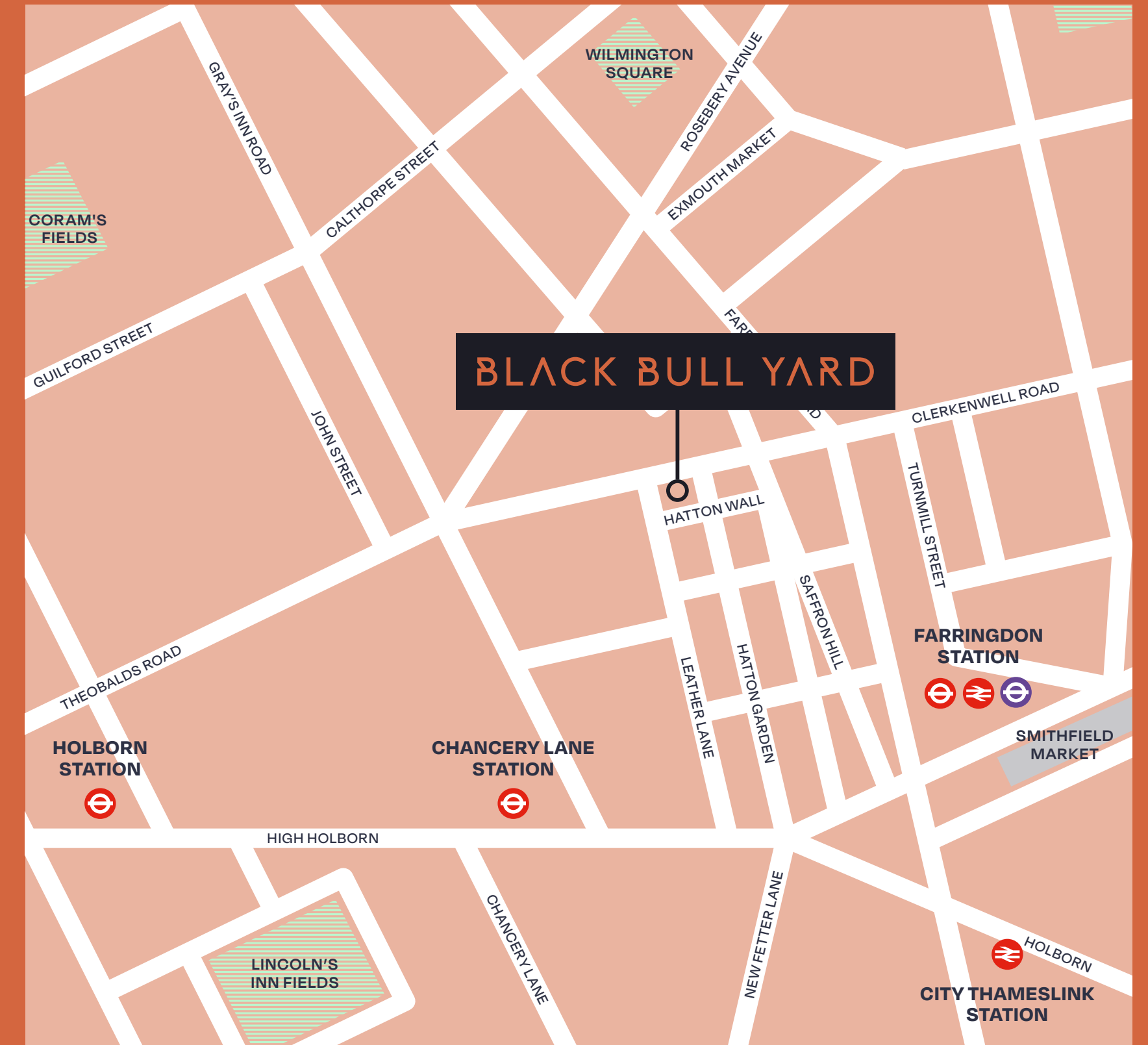
- 42 open plan workstation
- 12 person meeting room
- 2 x 8 person meeting room
- 3 x touchdown areas
- Collaboration area
- 2 x meeting booths
- Breakout areas
- Reception / welcome area



LOCAL AREA

Black Bull Yard sits squarely on Hatton Wall connecting vibrant Hatton Garden to Leather Lane which hosts a long established food market which has been serving locals for many years. The restaurants and bars of Farringdon are also a short walk away.

The building is well connected with easy access to both Underground & Overground stations, with the Elizabeth Line at Farringdon reducing travel times across London.



Images:
Luca – St John Street
The Coach – Ray Street
Leather Lane Market
Brutto – Greenhill Rents

JOURNEY TIMES

From Black Bull Yard

ELIZABETH LINE

Journey times from Farringdon Station

FARRINGDON	CHANCERY LANE	HOLBORN	LIVERPOOL STREET	BOND STREET
 5 mins	 6 mins	 12 mins	 2 mins	 4 mins
KING'S CROSS ST PANCRAS	BANK	LONDON BRIDGE	CANARY WHARF	HEATHROW AIRPORT
 12 mins	 14 mins	 18 mins	 8 mins	 39 mins



FURTHER INFORMATION

TERMS
Upon application.

JULES HIND
jhind@farebrother.com
020 7855 3558

VIEWING
Strictly through
sole letting agents.

MARK ANSTEY
manstey@farebrother.com
020 7855 3552

Farebrother

Farebrother give notice that these particulars are set out as a general outline only for the guidance of intending Purchasers or Lessees and do not constitute any part of an offer or contract. Details are given without any responsibility and any intending Purchasers, Lessees or Third Party should not rely on them as statements or representations of fact, but must satisfy themselves by inspection or otherwise as to the correctness of each of them. No person in the employment of Farebrother has any authority to make any representation or warranty whatsoever in relation to this property. September 2025.

Designed and produced by Cre8te - 020 3468 5760 - cre8te.london