

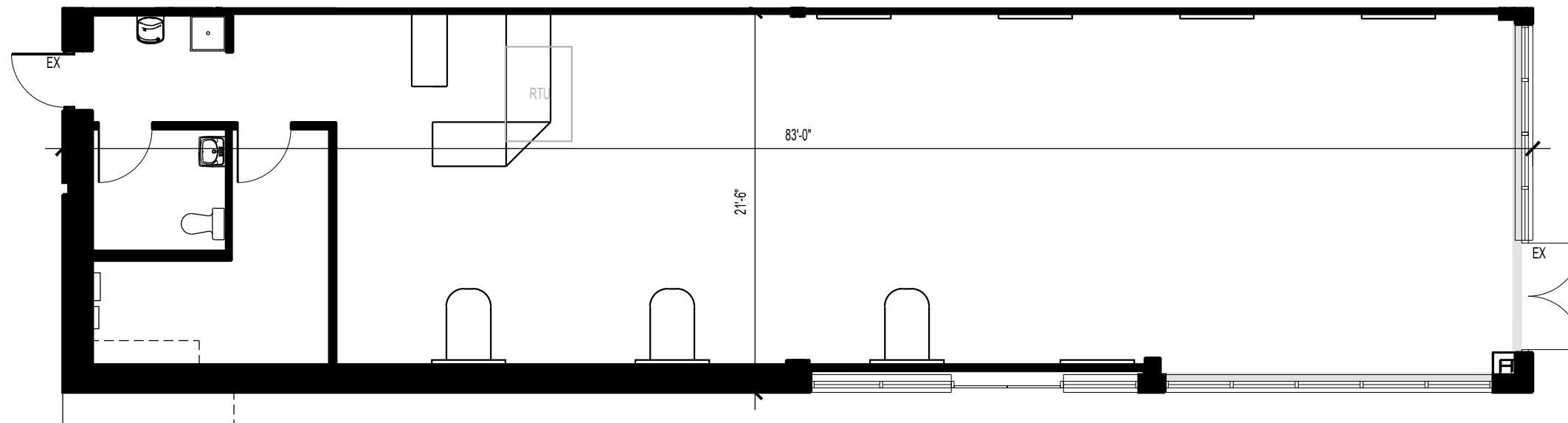
SPACE DATA

LEASABLE SPACE: 1,781 SQ. FT.
JURISDICTION: ANNE ARUNDEL COUNTY
CEILING / JOIST HT: 10'-0" CEILING, 10'-0" AT BATHROOM, 15'-8" B.O. DECK, 13'-8" B.O. JOIST

NUMBER OF EXITS: 2 (EXISTING), 1 CLOSED IN PLACE ON SIDE
STOREFRONT: BLACK ALUMINUM WINDOWS/ WOOD SILL
SPRINKLER: NO
FIRE ALARM: NO
GAS: BGE GAS METER COULD NOT BE CONFIRMED
WATER: EXISTING METER NOT LABELED
ELECTRIC: BGE ELEC METER COULD NOT NE CONFIRMED
 PANEL: 200 AMPS, 208Y/120, 3 PHASE

HVAC: RTU 1; TRANE, MODEL NO. YCD102C3H0AB, SERIAL NO. N17102077D

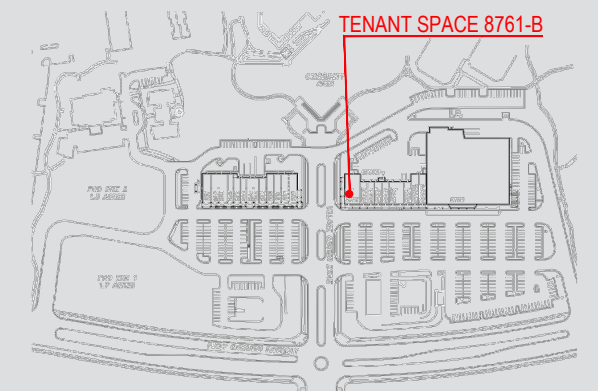
CONSTRUCTION TYPE: II-B (BASED ON OBSERVED CONSTRUCTION)
USE GROUP: M (PREVIOUS TENANT)



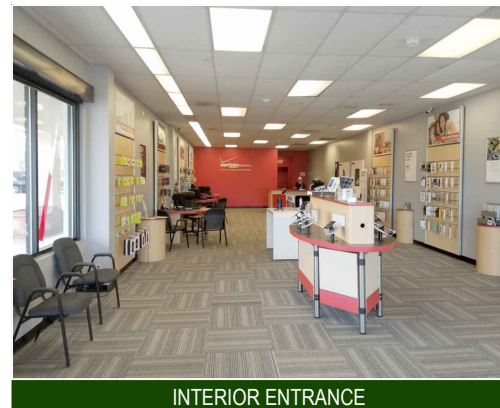
LEASE OUTLINE DRAWING

SCALE 1/8" = 1' - 0"

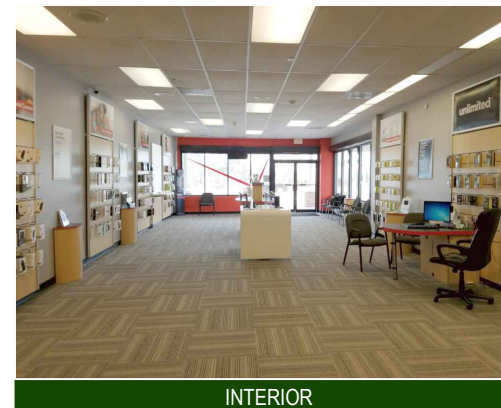
SITE PLAN



STOREFRONT



INTERIOR ENTRANCE



INTERIOR



SIDE ELEVATION