

PROPERTY DETAILS

- Unit 3698-E
- 3,200 SF (10% office)
- Rental Rate: \$19.00 NNN + \$8.15 CAM
- 18' clear ceiling height
- 1 dock high door
- 1 grade level door
- 3-phase power
- Zoning: IL - Light Industrial (City of Lauderhill)
- Parking Ratio: 1.84/1,000 SF
- Strategically located just east of US-441 between the Fla. Tnpk. and I-95 providing easy access to all of south Florida

ABOUT PROPERTY



PRICE

\$19.00 NNN



YEAR BUILT

1985



AVAILABLE SF

3,200 SF



PARKING

1.84/1,000



LOCATION

Lauderhill, FL

For more information:

Jonathan Thiel

954.652.2020 | Jthiel@Bergercommercial.Com

bergercommercial.com

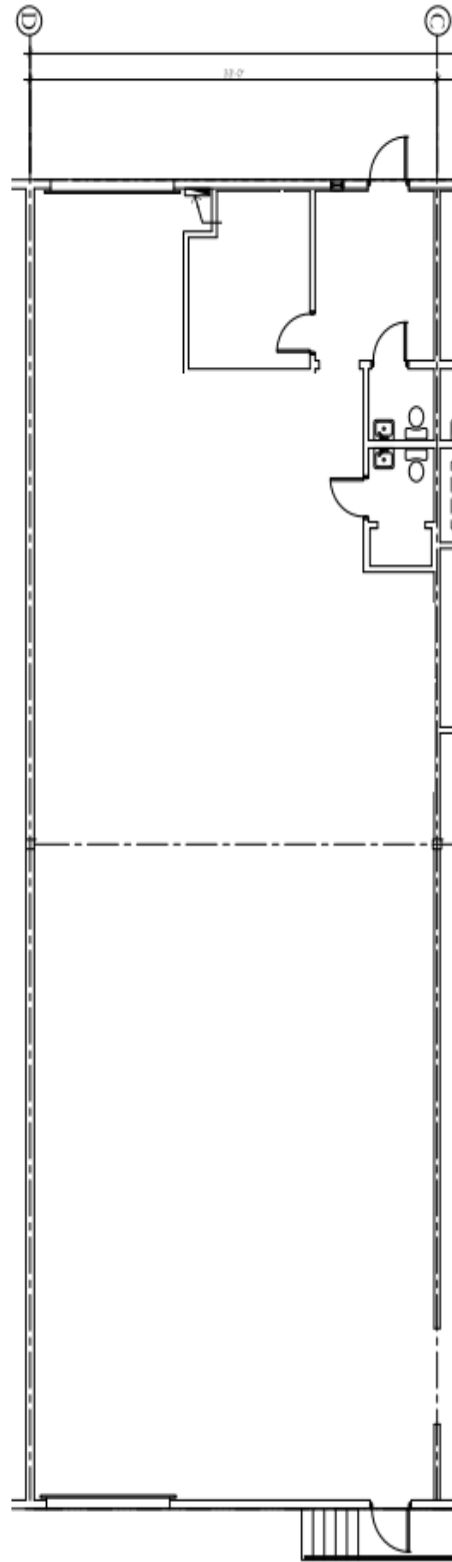
Daniel Forman

954.652.2004 | Dforman@Bergercommercial.Com

Lawrence Oxenberg

954.652.2017 | Loxenberg@Bergercommercial.Com





For more information:

Jonathan Thiel

954.652.2020 | Jthiel@Bergercommercial.Com

bergercommercial.com

Daniel Forman

954.652.2004 | Dforman@Bergercommercial.Com

Lawrence Oxenberg

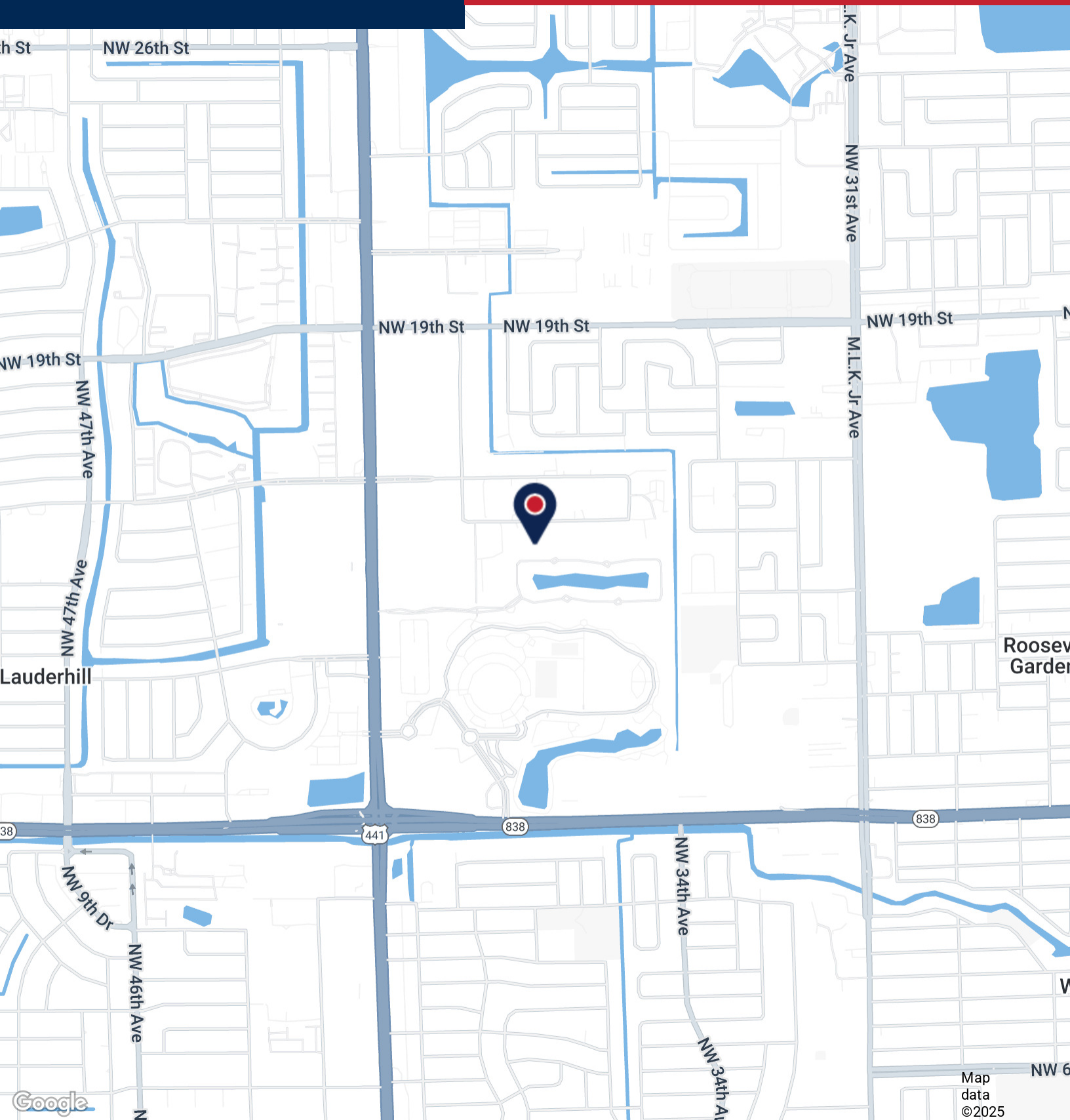
954.652.2017 | Loxenberg@Bergercommercial.Com



COMMERCIAL BROKERAGE AND PROPERTY MANAGEMENT

LAUDERHILL COMMERCE PARK

LOCATION MAP



For more information:

Jonathan Thiel

954.652.2020 | Jthiel@Bergercommercial.com

bergercommercial.com

Daniel Forman

954.652.2004 | Dforman@Bergercommercial.com

Lawrence Oxenberg

954.652.2017 | Loxenberg@Bergercommercial.com

