

For Sublease

# 555

## West Hastings Street

### Harbour Centre

Up to 32,000 s.f.



 JLL

Located on the Waterfront, tenants enjoy spectacular unobstructed views of Burrard Inlet and the North Shore Mountains. A short walking distance to the West Coast Express, SkyTrain, and Seabus, and just steps away from the Seawall, the Harbour Centre's central location provides excellent accessibility in and around the city of Vancouver.



Walk Score  
98

Transit Score  
100

Bike Score  
83

**Amenities**

-  Gym
-  Bike Lockers
-  End-of-Trip Facilities
-  24-7 Building Security
-  2 Levels of retail shops and a food court
-  Vancouver Lookout Revolving Restaurant



An opportunity to sublease all or a portion of up to 31,235 square feet at below-market rates. Various options to sublease, including a portion of the 9th floor for 7,377 s.f., with 10 private offices and an open area, and/or two full floors of 11,974 s.f. each, which can be subleased independently.



**Availability:**  
60-90 days



**Sublease Expiry:**  
July 30, 2030



**Asking Rate:**  
Contact listing brokers



**Additional Rent:**  
\$22.30 psf/pa (2025)



**Furniture:**  
Can be made available



**Parking:**  
1 stall per 2,000 s.f.

**All floors** offer spectacular views of the ocean and the North Shore mountains. Available at below-market rates.

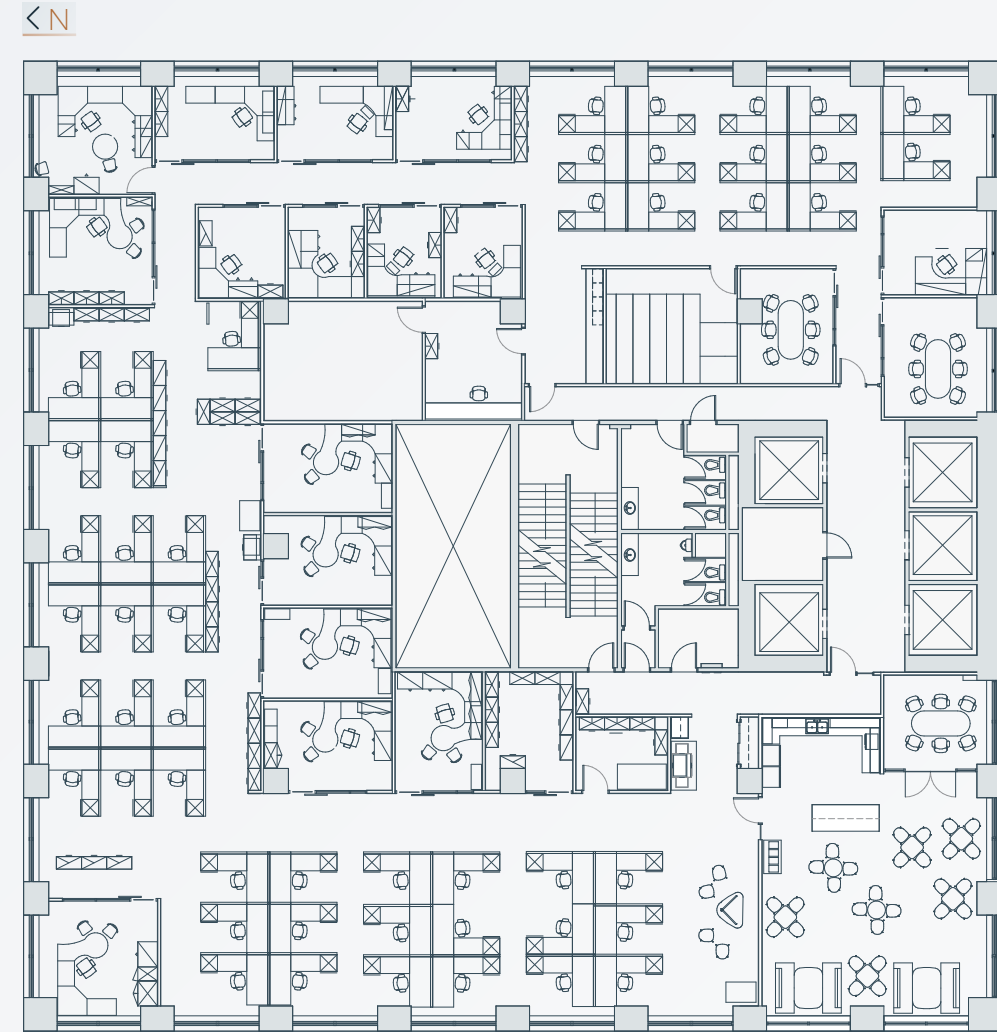


## 7th Floor

Suite 700 boasts a newly renovated cafeteria style lounge, 3 breakout rooms, 14 private offices, 2 supply/storage rooms, large copy area – with the balance being open plan with 49 workstations.



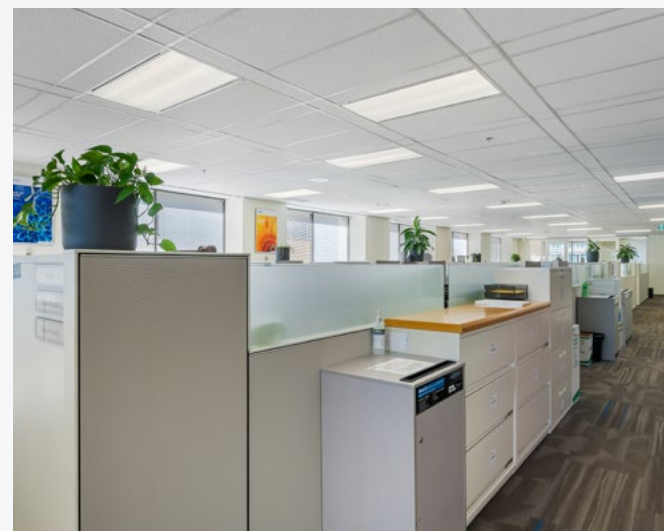
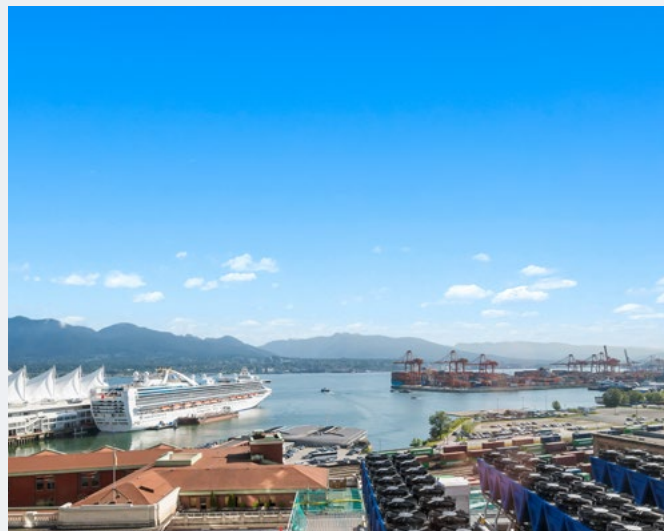
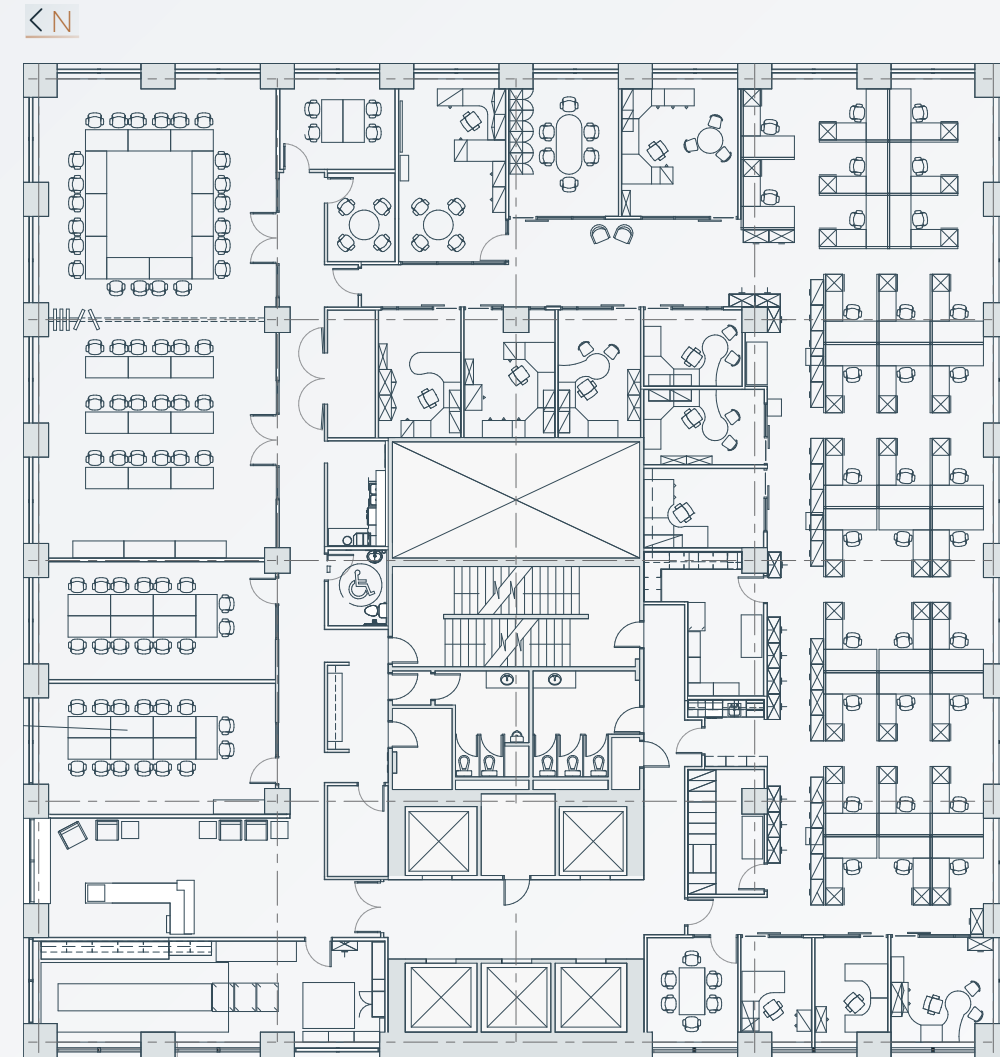
**Suite 700:**  
11,974 s.f.



## 8th Floor

Suite 800 boasts reception, 2 large boardrooms, 2 conference rooms, 2 breakout rooms, 12 private offices, and an open area with 39 workstations.

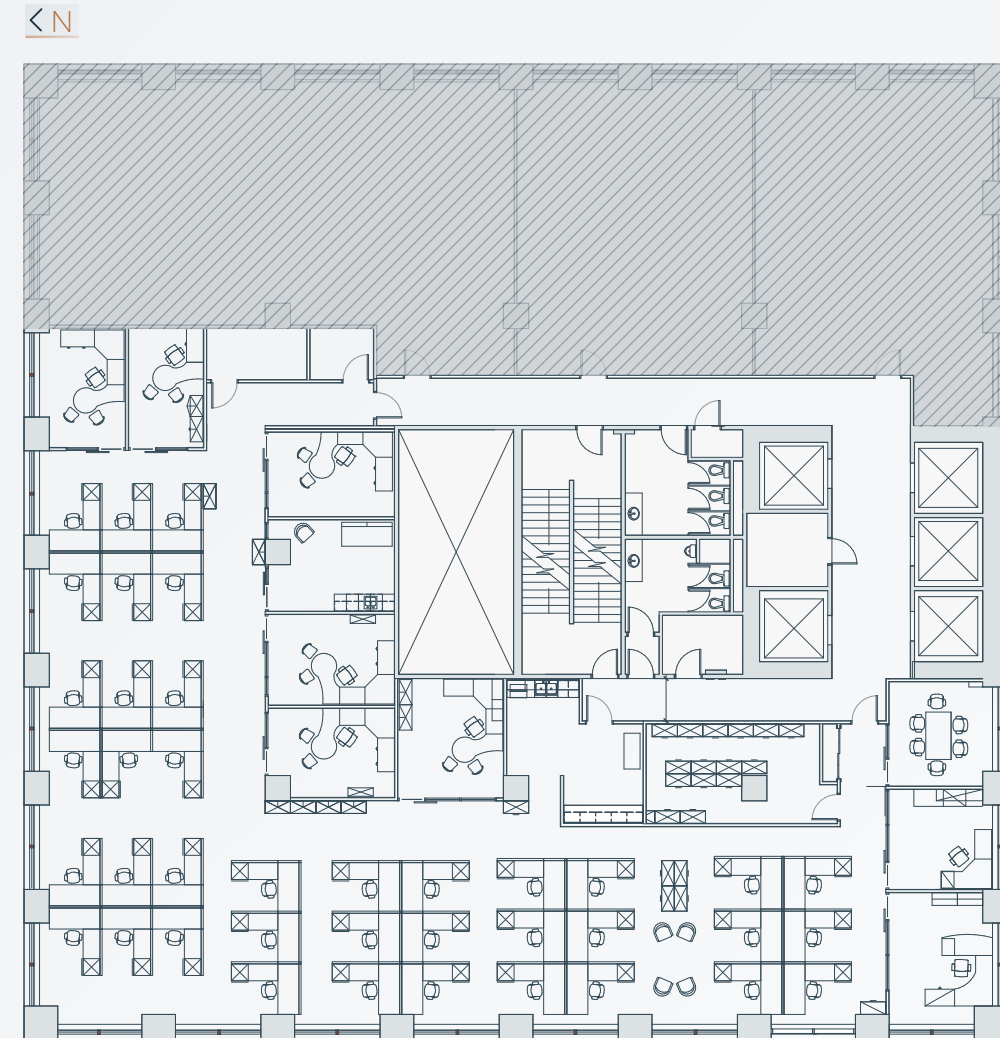
 **Suite 800:**  
11,974 s.f.



## 9th Floor

Suite 950 is currently unfurnished with 9 private offices, a breakout room, kitchenette and open plan.

 **Suite 950:**  
7,377 s.f.



# 555

West Hastings Street

**Harbour Centre**



• **Mark Trepp\***

Executive Vice President  
+1 604 998 6035  
mark.trepp@jll.com

• **Corbin Macdonald\***

Vice President  
+1 604 313 4572  
corbin.macdonald@jll.com

Although information has been obtained from sources deemed reliable, neither Owner nor JLL makes any guarantees, warranties or representations, express or implied, as to the completeness or accuracy as to the information contained herein. Any projections, opinions, assumptions or estimates used are for example only. There may be differences between projected and actual results, and those differences may be material. The Property may be withdrawn without notice. Neither Owner nor JLL accepts any liability for any loss or damage suffered by any party resulting from reliance on this information. If the recipient of this information has signed a confidentiality agreement regarding this matter, this information is subject to the terms of that agreement. ©2025 Jones Lang LaSalle IP, Inc. All rights reserved. \*Personal Real Estate Corporation