



# CENTERPARK LABS

[centerparklabs.com](http://centerparklabs.com)

Colliers

**STEVE BRUCE**

Vice Chairman | Co-Lead  
t 858-922-3056  
[steve.bruce@colliers.com](mailto:steve.bruce@colliers.com)  
CA RE Lic. #01455744

**CHRIS HIGH, SIOR**

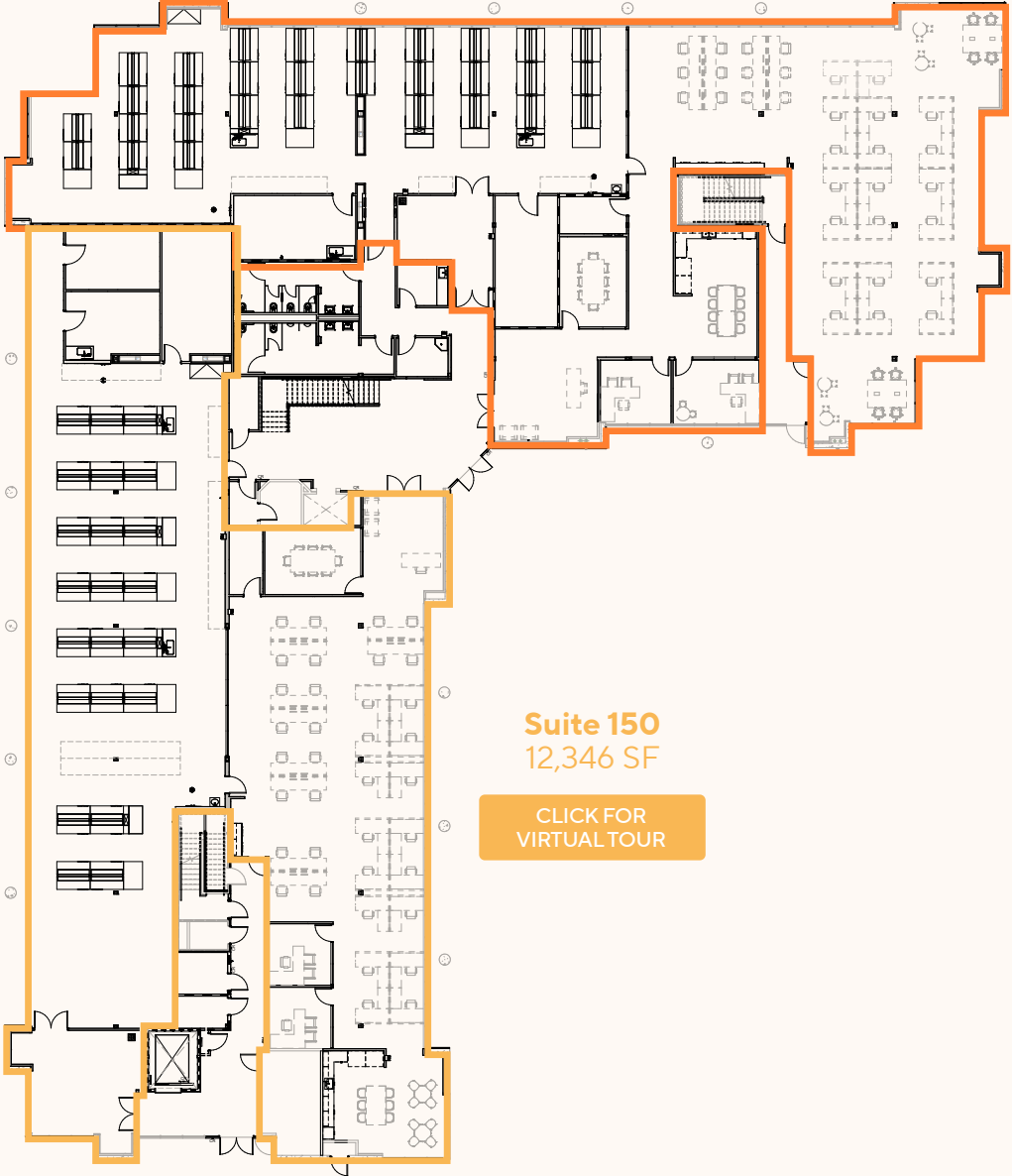
Vice Chairman | Co-Lead  
t 619-772-2936  
[chris.high@colliers.com](mailto:chris.high@colliers.com)  
CA RE Lic. #01734544

**CONOR EVANS**

Vice President  
t 858-291-1415  
[conor.evans@colliers.com](mailto:conor.evans@colliers.com)  
CA RE Lic. #01963596

# 6815 Flanders Dr

FIRST FLOOR

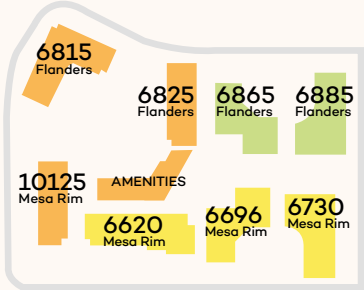


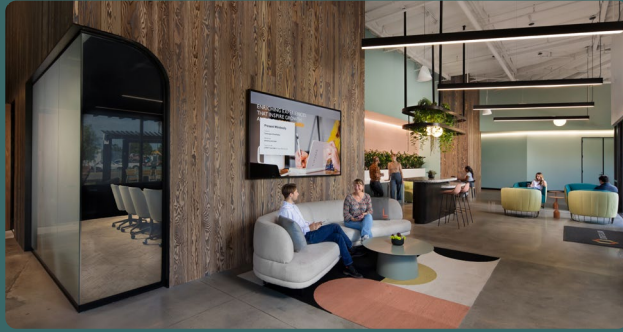
**Suite 100**  
12,453 SF

[CLICK FOR VIRTUAL TOUR](#)

**Suite 150**  
12,346 SF

[CLICK FOR VIRTUAL TOUR](#)





## Room for life- at work

- Onsite Restaurant
- Beer On Tap
- Food Trucks
- Mindfulness Spaces
- Outdoor Seating
- Collaboration Areas
- Resort Style Fitness Center