

50 West 23rd Street

FLATIRON DISTRICT
NEW YORK, NY



NEWMARK

50 WEST 23RD STREET

Property Details

Location

Between Fifth and Sixth Avenues

Approximate Size

Ground Floor 3,000 SF

Frontage

20 FT on West 23rd Street

Ceiling Height

13 FT

Site Status

Currently vacant, Former Brooklyn Roasting Co.

Possession

Immediate

Neighbors

Panera Bread, Home Depot, Sisu Clinic, Lifetime Fitness, Best Buy, Mangia, Eataly, CityMD and Starbucks

Comments

Close proximity to the **F M** and **R W** subways, 23rd Street 
Madison Square Park, and the Flatiron Building

Direct access to loading dock

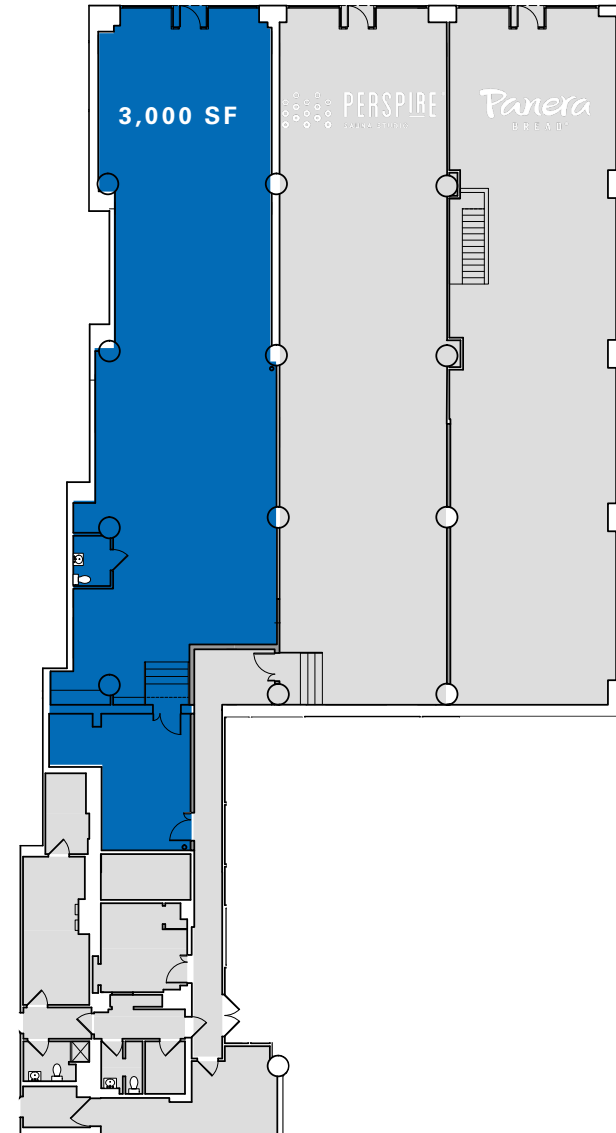
Approximately 1,500 SF of non-contiguous storage space can be made available in the lower level

Space features direct access to office lobby

Ground Floor

WEST 23RD STREET

— 20 FT —



50 WEST 23RD STREET



CONTACT

Benjamin Birnbaum
 t 212-850-5474
 benjamin.birnbaum@nmrk.com

Ross Berkowitz
 t 212-916-3388
 ross.berkowitz@nmrk.com

James Panzarella Jr
 t 212-372-0700
 james.panzarella@nmrk.com

nmrk.com