

30 WINTER STREET

BOSTON, MASSACHUSETTS



6,465 SF on the Third Floor

Move-In Ready, Fully Furnished Office Space for Lease
Just Steps from Boston Common

PROPERTY SPECIFICATIONS

Located in the vibrant Downtown Crossing area and equidistant from both the Downtown Crossing and Park Street MBTA Stations, 30 Winter Street is a 12-story building consisting of approximately 85,000 SF. The modern-style building offers an abundance of natural light and the area provides unmatched amenities.



New building lobby



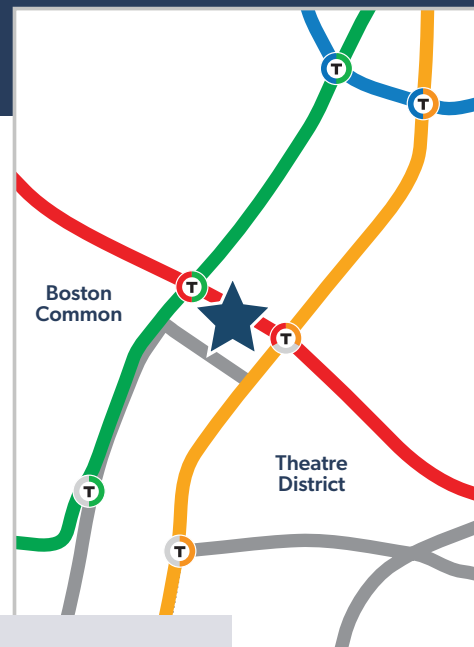
Lobby attendant



Superb MBTA access



Steps from all Downtown Crossing amenities

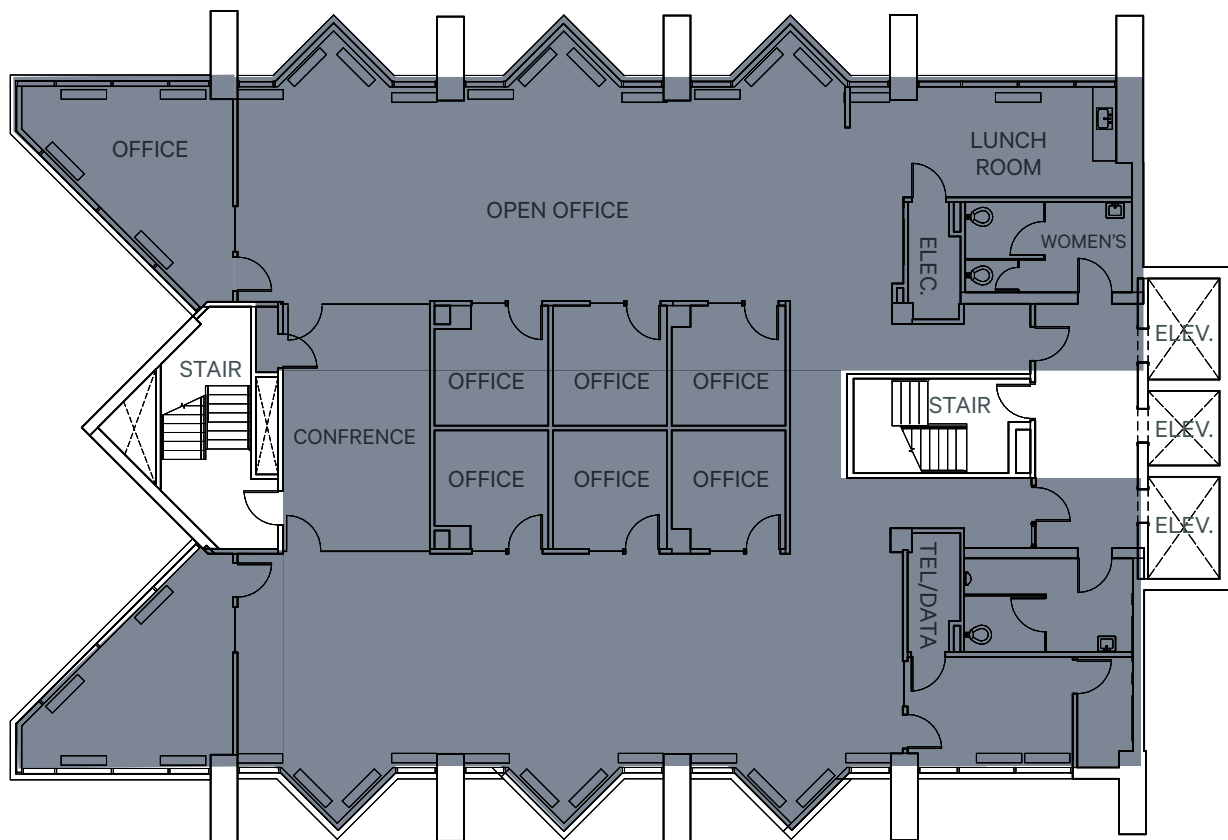


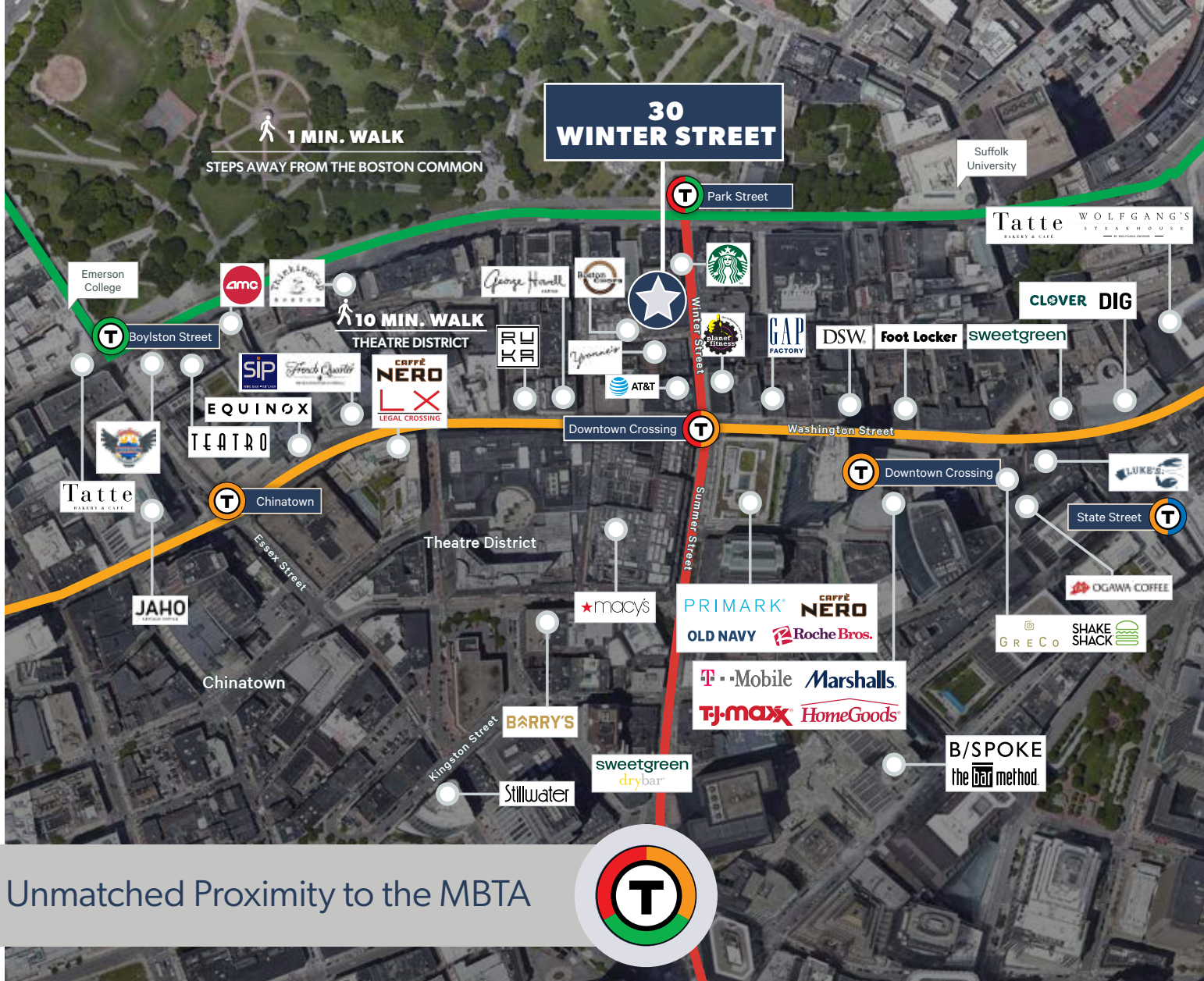
On-site security & Downtown Business Alliance Ambassadors throughout the immediate area

SPACE DETAILS

Third Floor 6,456 RSF Available

- Fully Furnished
- ±24 Workstations
- 6 Private Offices
- 4 Huddle/Conference Rooms
- Kitchen





Unmatched Proximity to the MBTA



CONTACTS

Jon Freni
 Senior Vice President
 +1 617 912 7044
 jonathan.freni@cbre.com

Dan Metzdorf
 Senior Associate
 +1 617 499 4498
 dan.metzdorf@cbre.com

© 2025 CBRE, Inc. All rights reserved. This information has been obtained from sources believed reliable but has not been verified for accuracy or completeness. CBRE, Inc. makes no guarantee, representation or warranty and accepts no responsibility or liability as to the accuracy, completeness, or reliability of the information contained herein. You should conduct a careful, independent investigation of the property and verify all information. Any reliance on this information is solely at your own risk. CBRE and the CBRE logo are service marks of CBRE, Inc. All other marks displayed on this document are the property of their respective owners, and the use of such marks does not imply any affiliation with or endorsement of CBRE. Photos herein are the property of their respective owners. Use of these images without the express written consent of the owner is prohibited.

