

EDWARD CHARLES  
& PARTNERS W 1  
CHARTERED SURVEYORS

# 35 Albemarle Street

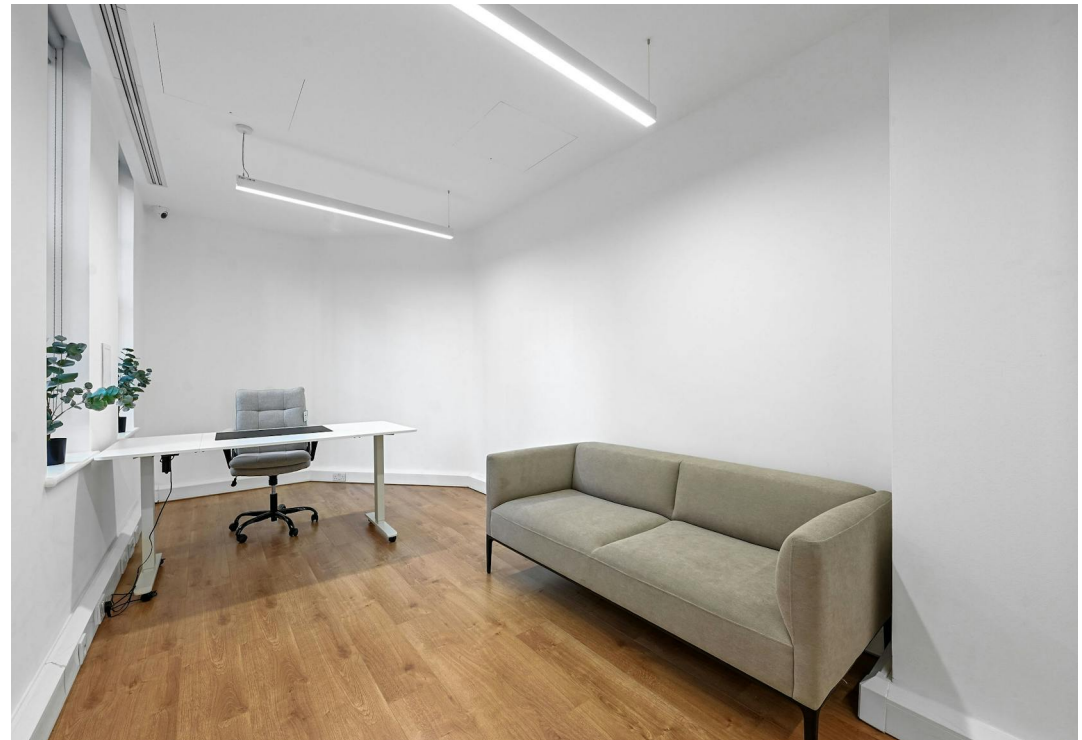
London, W1S 4JD

2nd Floor Fully Fitted Available on a conventional or managed basis.

# Key Points

- Fully managed
- Air conditioning
- 12 desks
- LED lighting
- Good natural light
- Perimeter trunking
- Video entry phone system
- WC's
- Meeting room/exec office
- Boardroom





# Availability

| Name         | sq ft | sq m   | Tenure | Availability |
|--------------|-------|--------|--------|--------------|
| 3rd          | 926   | 86.03  | To Let | Let          |
| 2nd - CAT A+ | 926   | 86.03  | To Let | Available    |
| Total        | 1,852 | 172.06 |        |              |

## Description

The 2nd floor office has undergone a refurbishment, to provide fully fitted, furnished and managed office space, configured as 12 desks with a demised boardroom, meeting room and kitchen. The building has well-presented common parts.

## Tenure

Leasehold

# Further Information

## Location

This elegant period building is prominently located on the western side of the street, just to the north of its junction with Stafford Street. It is a short walk to both Green Park (Victoria, Jubilee & Piccadilly lines) and Piccadilly (Waterloo, Northern & Piccadilly lines) Underground Stations. It benefits from the abundance of retail, restaurant and leisure offerings of Southern Mayfair.

## Links

[Website →](#)  
[Floor Plans →](#)

## Contact

Ollie Mitchell  
07769 310206

[omitchell@edwardcharles.co.uk](mailto:omitchell@edwardcharles.co.uk)

Sean Cunningham  
07827 985858

[scunningham@edwardcharles.co.uk](mailto:scunningham@edwardcharles.co.uk)

[edwardcharles.co.uk](http://edwardcharles.co.uk)

