



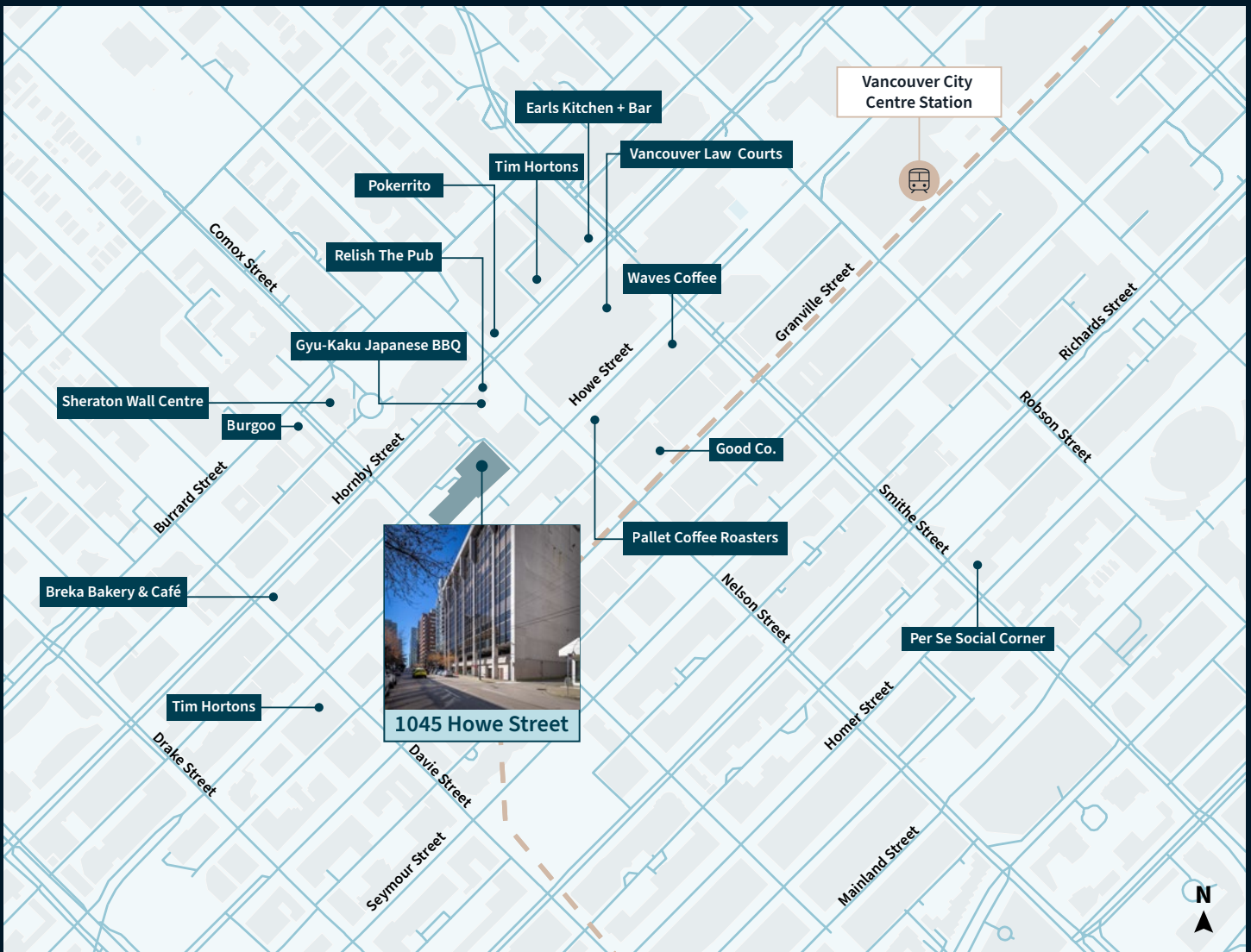
For Lease

1045 Howe Street
Vancouver, BC

 **JLL** SEE A BRIGHTER WAY

THE BUILDING & LOCATION

1045 Howe Street is a nine-storey Class B office building constructed in 1974. The building is located in Vancouver's downtown south district, on the west side of Howe Street. Steps away from Vancouver City Centre Skytrain Station and Granville Skytrain Station. The property is occupied by a combination of national and regional tenants. The building includes a two-storey above ground parking garage.



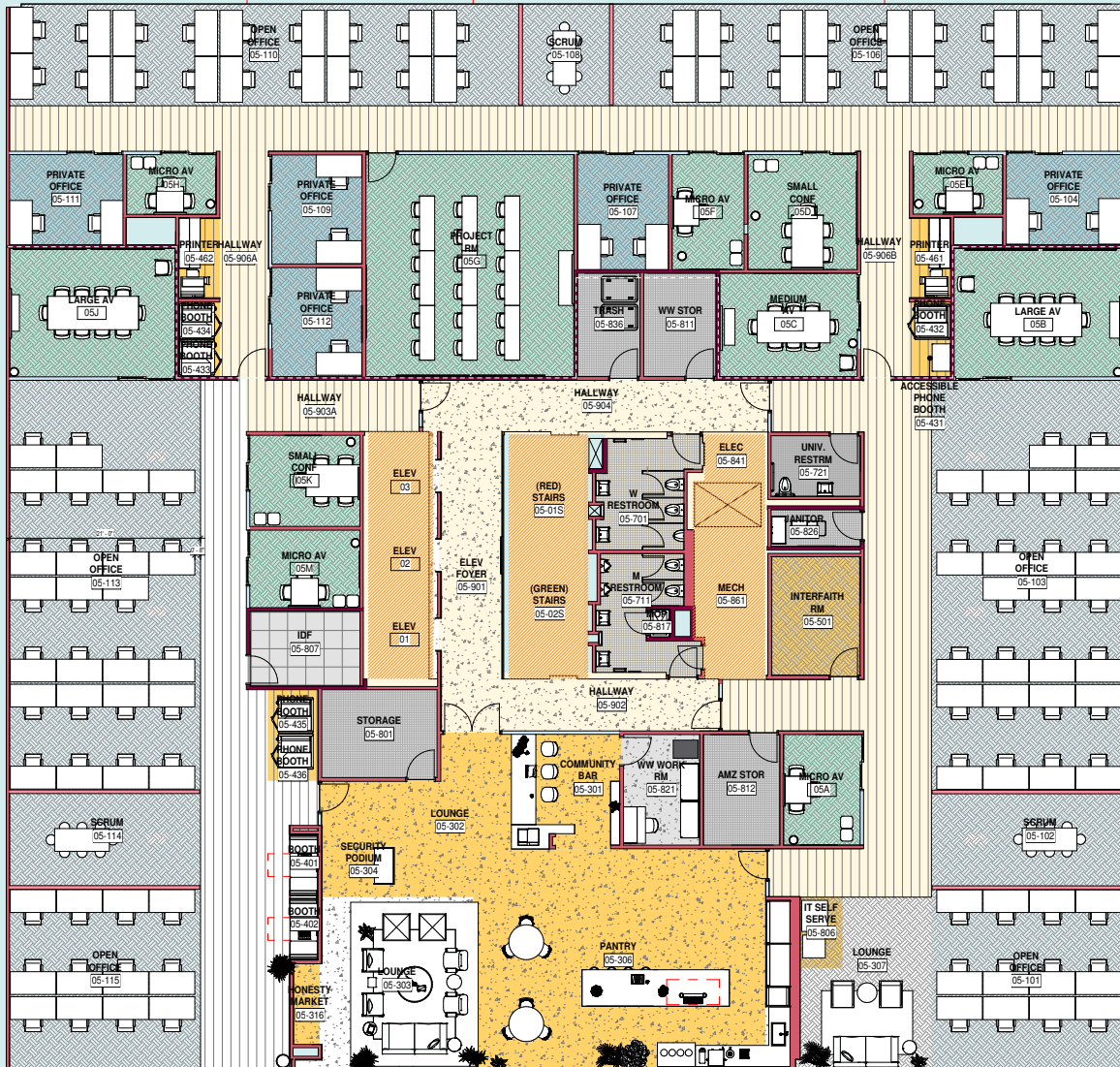
5TH FLOOR

THE SUITE

Extremely nicely improved office premises in effectively brand-new condition. Furniture available throughout also in brand new condition.

SALIENT DETAILS

Floor	5	Basic Rent	Contact listing broker
Size	14,005 s.f.	Additional Rent	\$18.61 psf/pa (2026)
Availability	Immediately	Furniture	Available



5TH FLOOR PHOTOS



SUITE 910

THE SUITE

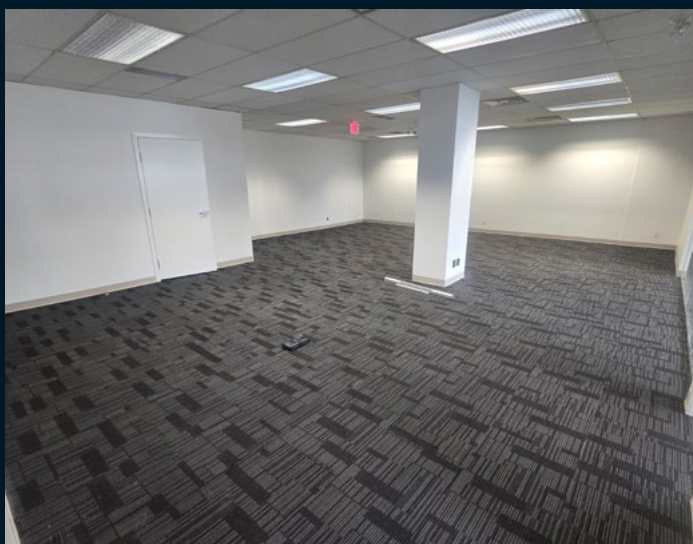
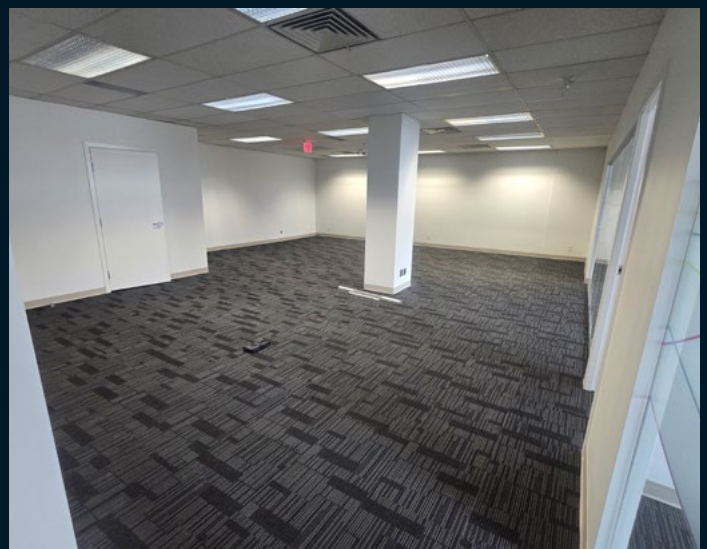
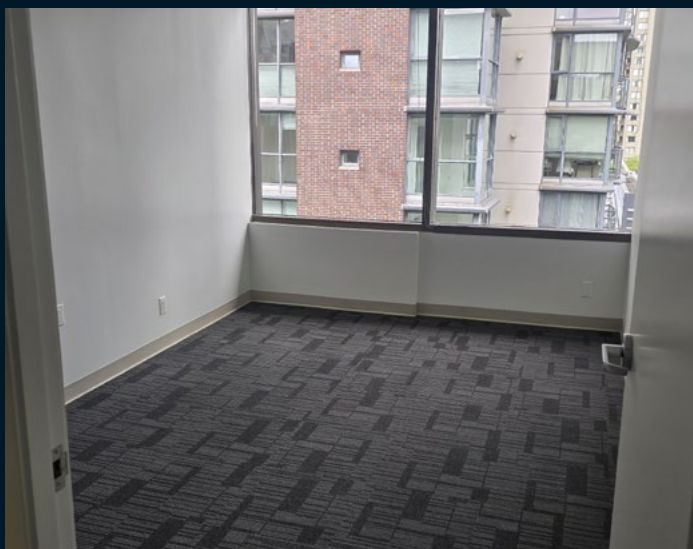
Improved with 2 offices, a boardroom, kitchen area, two phone rooms, a printer area and open plan area.

SALIENT DETAILS


Suite	910	Basic Rent	Contact listing broker
Size	3,958 s.f.	Additional Rent	\$18.61 psf/pa (2026)
Availability	Immediately	Furniture	Available



SUITE 910 PHOTOS





 **JLL** SEE A BRIGHTER WAY

Mark Chambers*

Executive Vice President

mark.chambers@jll.com

+1 604 998 6005

Although information contained herein has been obtained from sources deemed reliable, the owner, Jones Lang LaSalle Real Estate Services, Inc. ("JLL Canada"), and/or their representatives, brokers or agents make no guarantees as to the accuracy of the information contained herein, and offer the property/portfolio without express or implied warranties of any kind. The property/portfolio may be withdrawn without notice. If the recipient of this information has signed a confidentiality agreement regarding this matter, this information is subject to the terms of that agreement.

© Copyright 2026 Jones Lang LaSalle IP, Inc. All rights reserved. | jll.com | *Personal Real Estate Corporation