

PRESENTING

1 W S Q

1 WILLOUGHBY SQUARE

BROOKLYN, NY 11201

**PRIME RETAIL LOCATION
ADJACENT TO CITYPOINT, BROOKLYN'S
PREMIER SHOPPING DESTINATION**

ONE

WILLOUGHBY SQUARE
DOWNTOWN BROOKLYN



CONCEPTUAL RENDERING

SIZE: Ground Floor - 1,000 SF | Lower Level - 7,000 SF

FRONTAGE: 14'

CEILING HEIGHTS: Ground Floor - 17' 6"
Selling Lower Level - 14' 10"

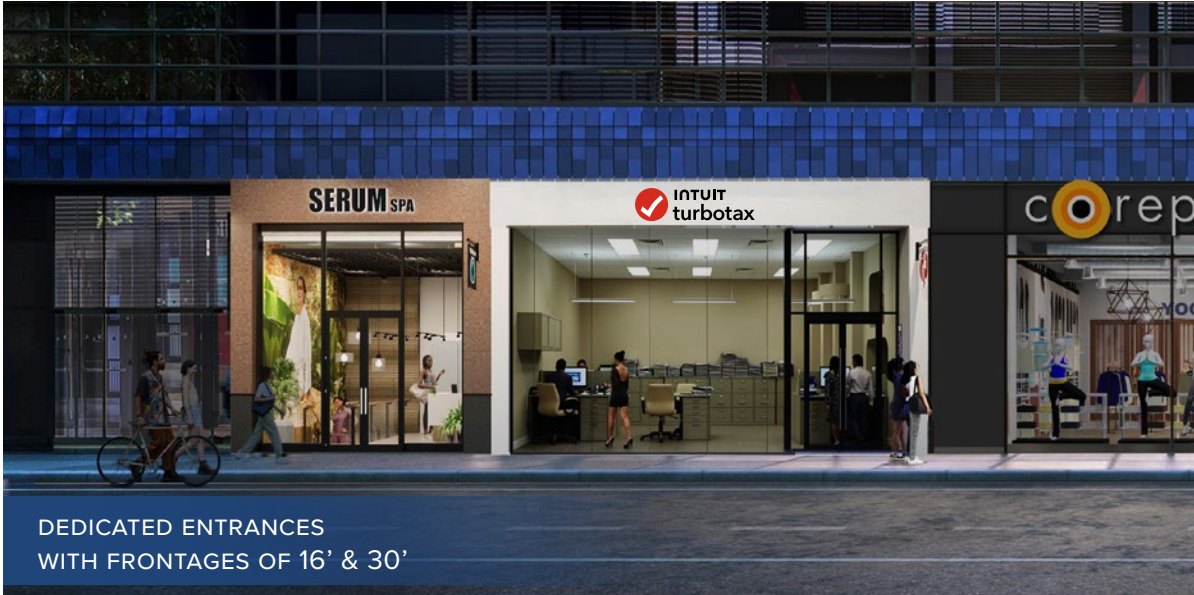
POSSESSION: Immediate

TRANSPORTATION: 

HIGHLIGHTS:

- **Directly Across from City Point – One of NYC’s Top Shopping & Dining Destinations**
- **Massive billboard signage providing an excellent branding opportunity with high visibility**
- **Ideal for Retail, Fitness, Medical, Experiential use**
- **Surrounded by NYU, LIU, and a ton of New Residential Towers**
- **Heavy foot & vehicle traffic**
- **Neighboring Tenants**
Corepower Yoga, Intuit, Primark, Sephora, Casper Wellness, City Point Shopping Center, Spear PT, Trader Joe’s, One Medical, DIG, My Gym, Van Leeuwen, K Pot, All in Anime

CONCEPTUAL RENDERINGS



DEDICATED ENTRANCES
WITH FRONTAGES OF 16' & 30'



NON-EXCLUSIVE BILLBOARD
SIGNAGE OPPORTUNITY FACING PARK



FLOOR PLANS:
GROUND FLOOR



FLOOR PLANS:
LOWER LEVEL



RESIDENTIAL STATISTICS

23,000+
New housing units constructed since 2004
(78% are rentals)

8,600+
New housing units under construction + planned

4,800 +
New affordable housing units constructed since 2004 (20% of total units built)

35%
of Downtown Brooklyn's housing units were completed in the past 5 years (2020-2024)

81%
of all new housing units since 2004 are rentals

65,000+
Total Population

16.5%
Population Growth since 2018
(more than 3x the rate of NYC)

2.0
Average household size

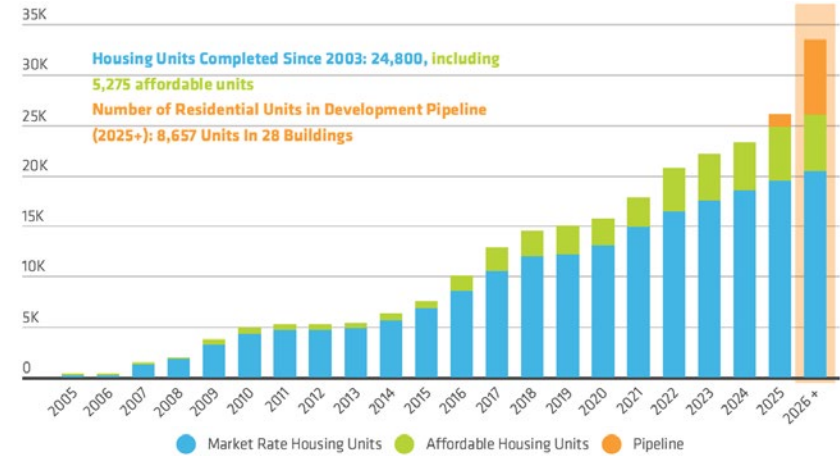
77%
of residents have a Bachelor's Graduate or Professional Degree

35,000
Total university students enrolled in Downtown Brooklyn (full * & part time)

23%
Residents are foreign born

\$156,977
Median household income

RESIDENTIAL DEVELOPMENT BY YEAR



RETAIL STATISTICS

245+
Restaurants + bars
(including over 30 vendors in food halls)

\$4.4 Billion
Estimated disposable income of residents living in Downtown Brooklyn

60%
of all retail businesses are locally-owned rather than national chains

\$1.7 Billion
Estimated Downtown Brooklyn Sales volume in 2022



ONE

WILLOUGHBY SQUARE

DOWNTOWN BROOKLYN

FOR MORE INFORMATION,
PLEASE CONTACT:

FREDDY SOUID

917.968.0329 | FSouid@ksrny.com

JACK HAMADANI

718.415.0095 | JHamadani@ksrny.com

DARREN KASSIN

917.684.7271 | DKassin@ksrny.com

JEMB | **ksr**
REALTY

All information supplied in this marketing presentation and/or flyer is from sources deemed reliable and is furnished subject to errors, omissions, modifications, removal of listings from sale/lease and to any listing condition. Any square footage, dimensions, floor plans and/or technical data set forth are approximations and are subject to further elaboration/confirmation.