

560-562 1ST AVENUE N.

SAINT PETERSBURG, FL 33701



OFFERING SUMMARY

Lease Rate:	\$44.00 SF/yr (NNN)
Building Size:	6,000 SF
Available SF:	2,953 SF
Market:	Tampa Bay
Submarket:	St. Petersburg

PROPERTY OVERVIEW

Retail space available on the 500 Block of 1st Avenue N. Come join one of the hottest areas in the heart of Downtown St. Pete. This space is just around the corner from The Lure, The Floridian Social Club, Book+Bottle, Mangosteen, Pacific Counter and so much more. 560-562 1st Avenue N. is in the heart of downtown, close to Mirror Lake, and is surrounded by new residential developments coming on-line in the near future.

PROPERTY HIGHLIGHTS

- Prime location in the heart of downtown St. Petersburg
- Excellent pedestrian traffic
- Located in-line with other retail & hospitality
- Lease rate does not include utilities, property expenses or building services



METRO
Each office independently owned and operated

150 Second Avenue North Suite 100
St. Petersburg, FL 33701

727.896.1800

JASON SPITZER, JD
Commercial Real Estate Advisor
727.336.0465
info@spitzerrutland.com

METROAGENTS.COMCOMMERCIAL

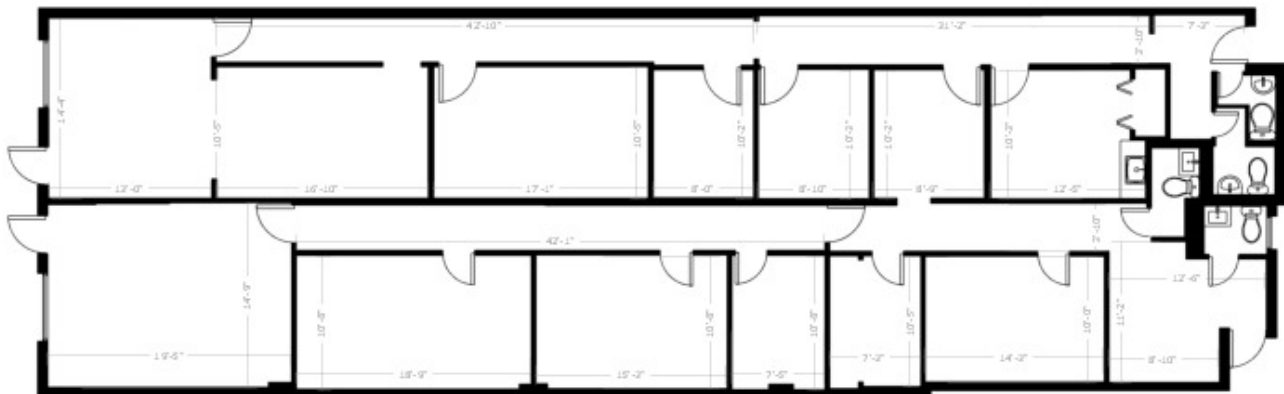
FOR LEASE

RETAIL PROPERTY

ADDITIONAL PHOTOS

560-562 1ST AVENUE N.

SAINT PETERSBURG, FL 33701



FloorPlanNinja.com



METRO
Each office independently owned and operated

150 Second Avenue North Suite 100
St. Petersburg, FL 33701

727.896.1800

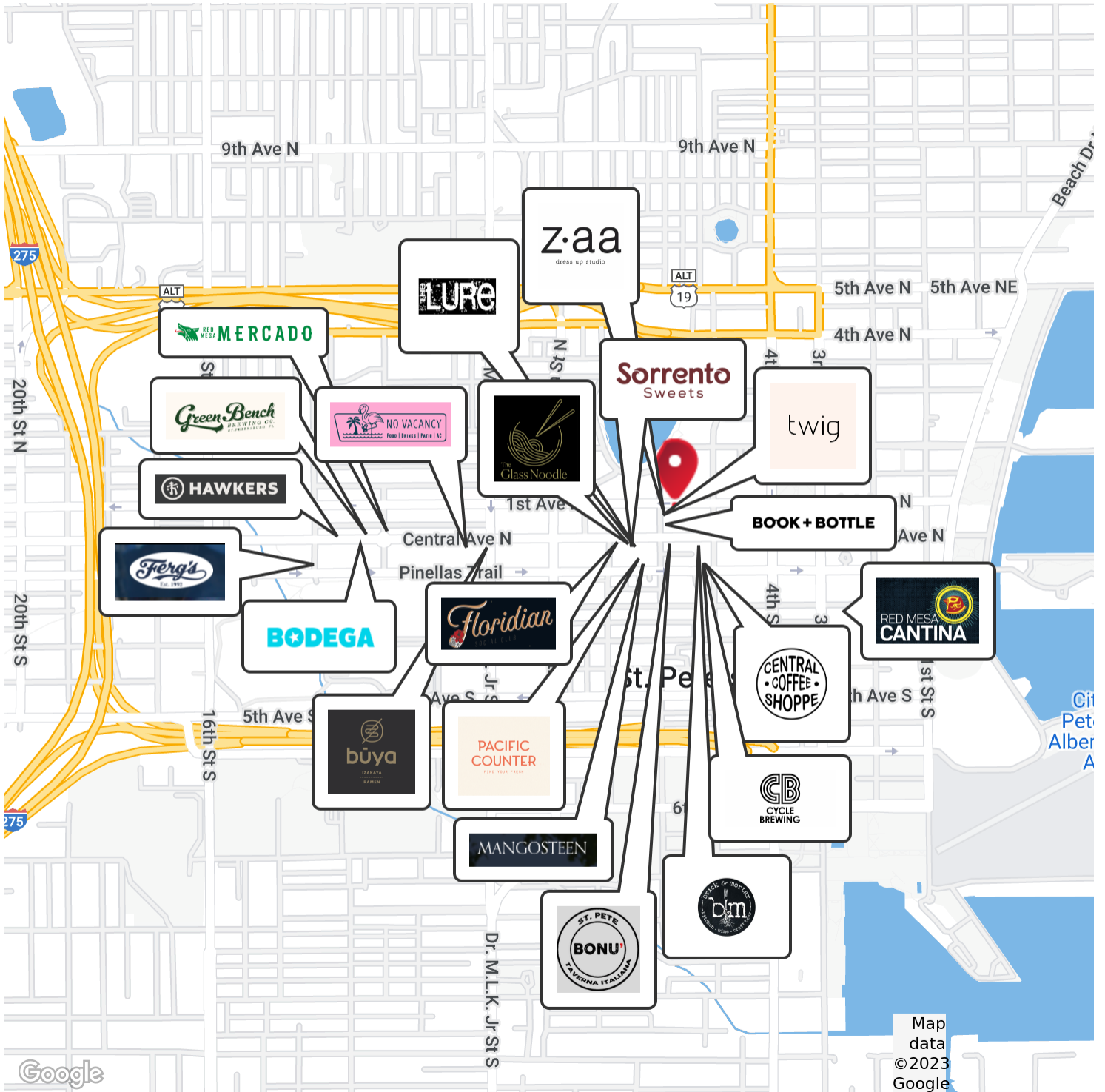
JASON SPITZER, JD
Commercial Real Estate Advisor
727.336.0465
info@spitzerrutland.com

METROAGENTS.COMCOMMERCIAL

All information contained herein is deemed reliable but not guaranteed. Each office independently owned and operated

560-562 1ST AVENUE N.

SAINT PETERSBURG, FL 33701



METRO
Each office independently owned and operated

150 Second Avenue North Suite 100
St. Petersburg, FL 33701

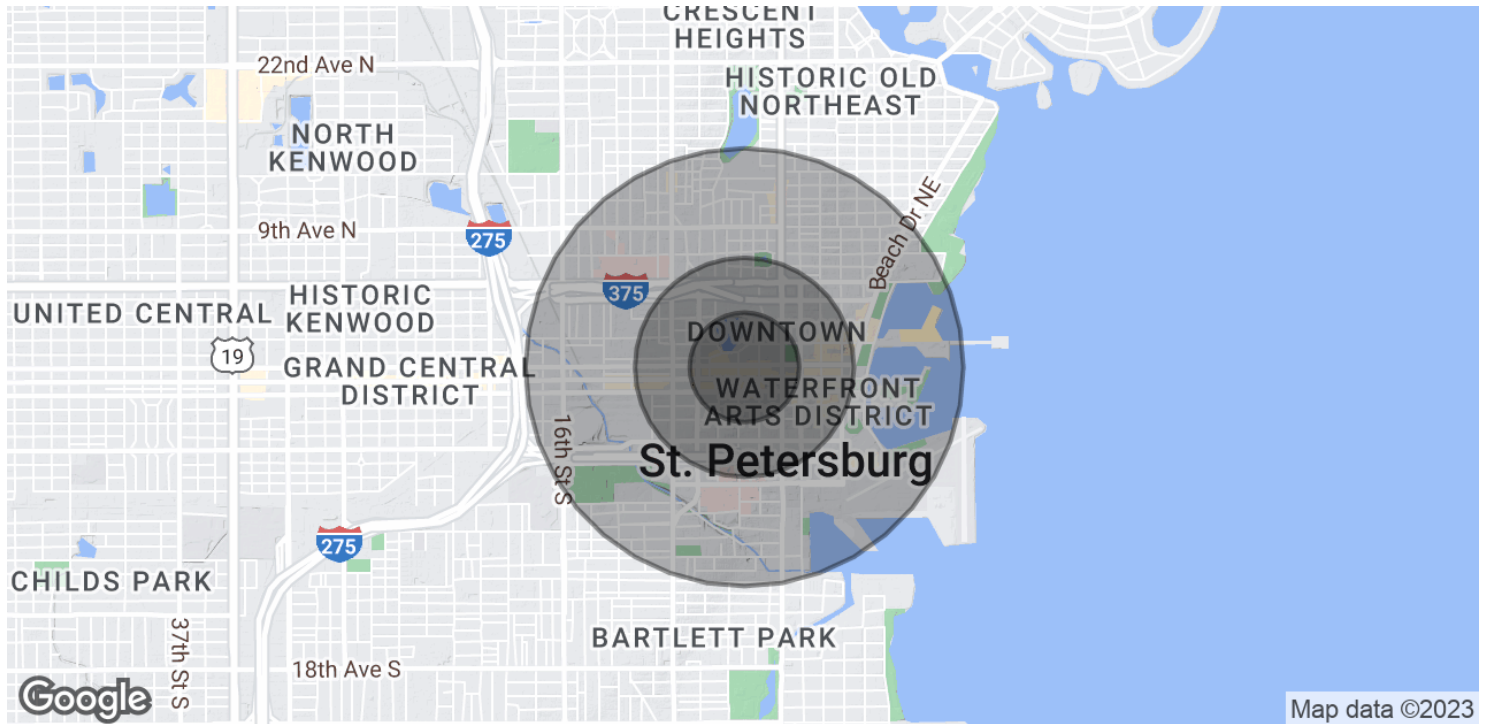
727.896.1800

JASON SPITZER, JD
Commercial Real Estate Advisor
727.336.0465
info@spitzerrutland.com

METROAGENTS.COMCOMMERCIAL

560-562 1ST AVENUE N.

SAINT PETERSBURG, FL 33701



POPULATION

0.25 MILES

0.5 MILES

1 MILE

	0.25 MILES	0.5 MILES	1 MILE
Total Population	1,399	5,807	17,020
Average Age	55.7	52.6	47.4
Average Age (Male)	51.9	52.1	47.6
Average Age (Female)	56.0	52.4	46.5

HOUSEHOLDS & INCOME

0.25 MILES

0.5 MILES

1 MILE

	0.25 MILES	0.5 MILES	1 MILE
Total Households	1,587	5,548	12,915
# of Persons per HH	0.9	1.0	1.3
Average HH Income	\$38,821	\$53,981	\$60,459
Average House Value	\$244,652	\$358,466	\$362,529

* Demographic data derived from 2020 ACS - US Census



METRO
Each office independently owned and operated

150 Second Avenue North Suite 100
St. Petersburg, FL 33701

727.896.1800

JASON SPITZER, JD
Commercial Real Estate Advisor
727.336.0465
info@spitzerrutland.com

METROAGENTS.COMCOMMERCIAL