

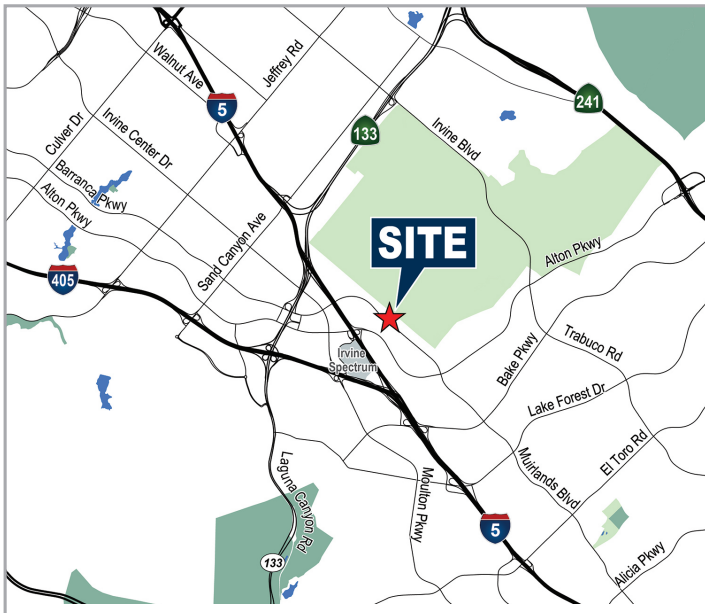
FOR LEASE

±11,968 SF Distribution/Warehouse

15281 Barranca Parkway, Unit D, Irvine Spectrum, CA 92618

Voit

REAL ESTATE SERVICES



FEATURES:

- Located in the Barranca Business Park adjacent to the Irvine Transportation Center
- ±2,565 Square Feet of Single Story Office Area
- One (1) Double Dock-High Loading Door (22'x10')
- 24' Minimum Warehouse Clear Height
- Fully Sprinklered - ESFR
- 1.85:1,000 Parking Ratio

Trent Walker
Executive Vice President

949.263.5342
twalker@voitco.com
Lic. #00964476

Alton Burgess
Senior Vice President

949.263.5397
aburgess@voitco.com
Lic. #01717094

Ryan Schroeder
Associate

949.922.1854
rschroeder@voitco.com
Lic. #02249575

2020 Main Street, Suite 100, Irvine, CA 92614 | 949.851.5100 • 949.261.9092 Fax

Voit

REAL ESTATE SERVICES

Licensed as Real Estate Salespersons by the DRE. The information contained herein has been obtained from sources we deem reliable. While we have no reason to doubt its accuracy, we do not guarantee it. ©2025 Voit Real Estate Services, Inc. All Rights Reserved. Lic. #01991785

www.VoitCo.com

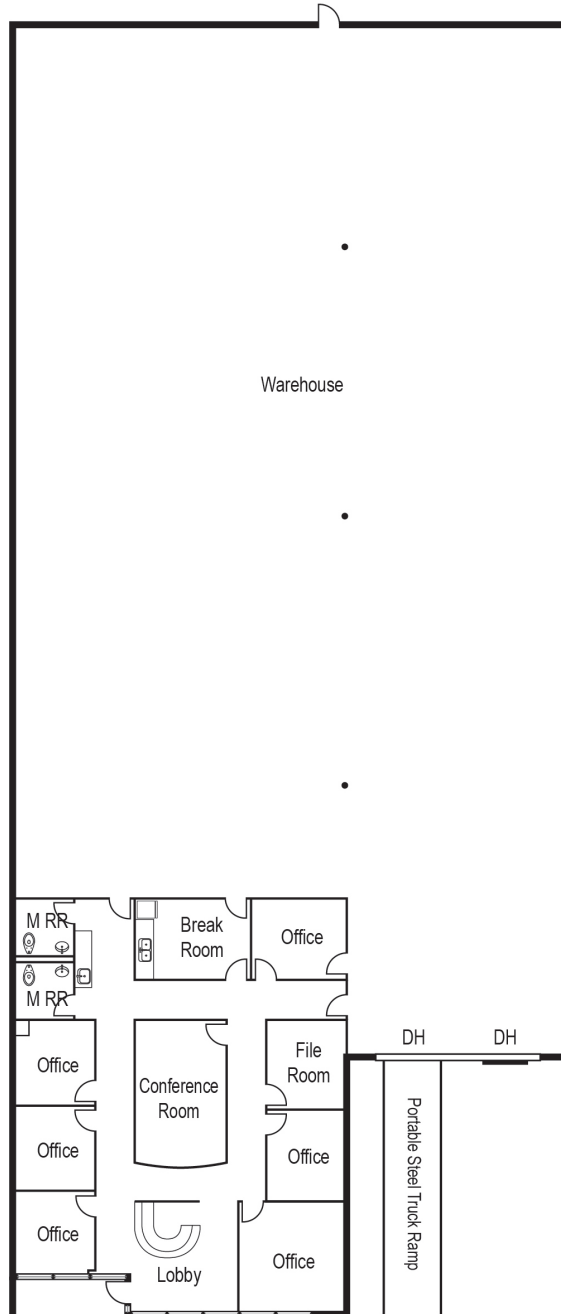
FOR LEASE

±11,968 SF Distribution/Warehouse

15281 Barranca Parkway, Unit D, Irvine Spectrum, CA 92618

Voit

REAL ESTATE SERVICES



Trent Walker
Executive Vice President
949.263.5342
twalker@voitco.com
Lic. #00964476

Alton Burgess
Senior Vice President
949.263.5397
aburgess@voitco.com
Lic. #01717094

Ryan Schroeder
Associate
949.922.1854
rschroeder@voitco.com
Lic. #02249575

2020 Main Street, Suite 100, Irvine, CA 92614 | 949.851.5100 • 949.261.9092 Fax

Licensed as Real Estate Salespersons by the DRE. The information contained herein has been obtained from sources we deem reliable. While we have no reason to doubt its accuracy, we do not guarantee it. ©2025 Voit Real Estate Services, Inc. All Rights Reserved. Lic. #01991785

Voit

REAL ESTATE SERVICES

www.VoitCo.com

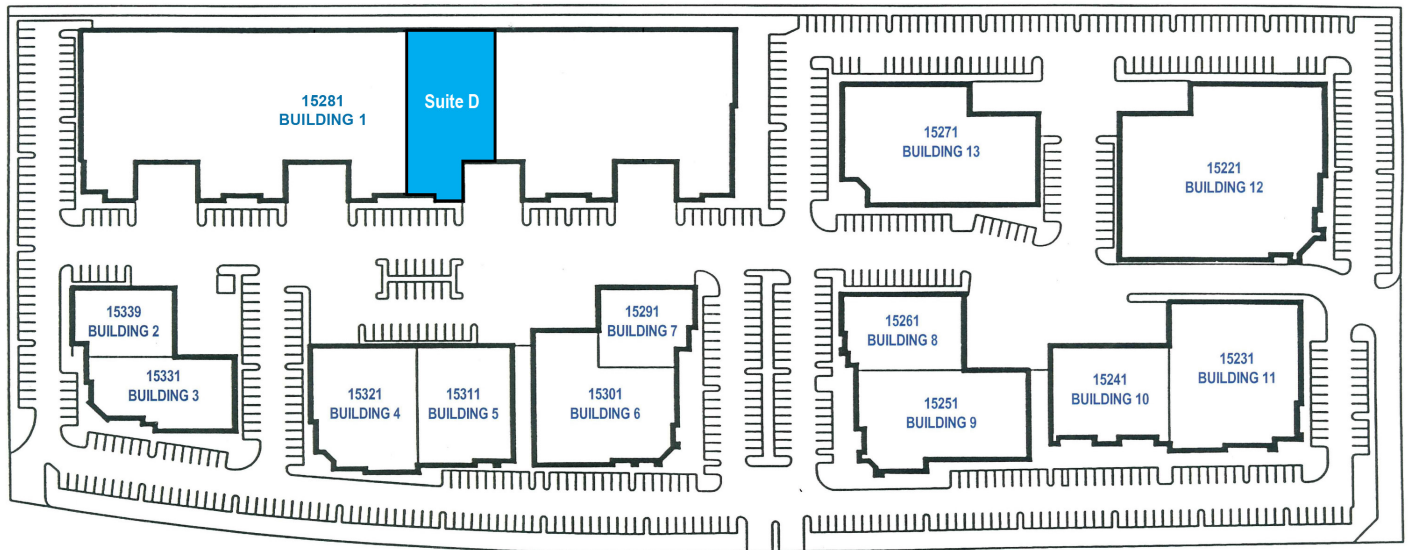
FOR LEASE

±11,968 SF Distribution/Warehouse

15281 Barranca Parkway, Unit D, Irvine Spectrum, CA 92618

Voit

REAL ESTATE SERVICES



BARRANCA PARKWAY

Trent Walker
Executive Vice President
949.263.5342
twalker@voitco.com
Lic. #00964476

Alton Burgess
Senior Vice President
949.263.5397
aburgess@voitco.com
Lic. #01717094

Ryan Schroeder
Associate
949.922.1854
rschroeder@voitco.com
Lic. #02249575

2020 Main Street, Suite 100, Irvine, CA 92614 | 949.851.5100 • 949.261.9092 Fax

Voit

REAL ESTATE SERVICES

Licensed as a Real Estate Salesperson by the DRE. The information contained herein has been obtained from sources we deem reliable. While we have no reason to doubt its accuracy, we do not guarantee it. ©2025 Voit Real Estate Services, Inc. All Rights Reserved. Lic. #01991785

www.VoitCo.com