

# Prime Armonk Retail Opportunity

1,450 SF Retail Space Available

Highly visible Route 22 corridor just off I-684 (Exit 3)

Strong exposure, Ideal for Retail, Medical, and Professional services



## 430 Bedford Road, Armonk, NY 10504

Rare opportunity to secure a high-end retail presence within a well-established retail center.

Exceptional visibility, convenient accessibility, and a strong tenant mix make this property ideally suited for a wide range of retail and service-oriented users.

- Over 16,000+ vehicles daily
- Excellent visibility
- Existing market build-out with available seating
- 160-car parking
- 24/7 access and HVAC
- Backup Generator
- Front and rear entrances
- ADA compliant

Located off exit 3 off I684 on Route 22/ 430 Bedford Road with fantastic visibility



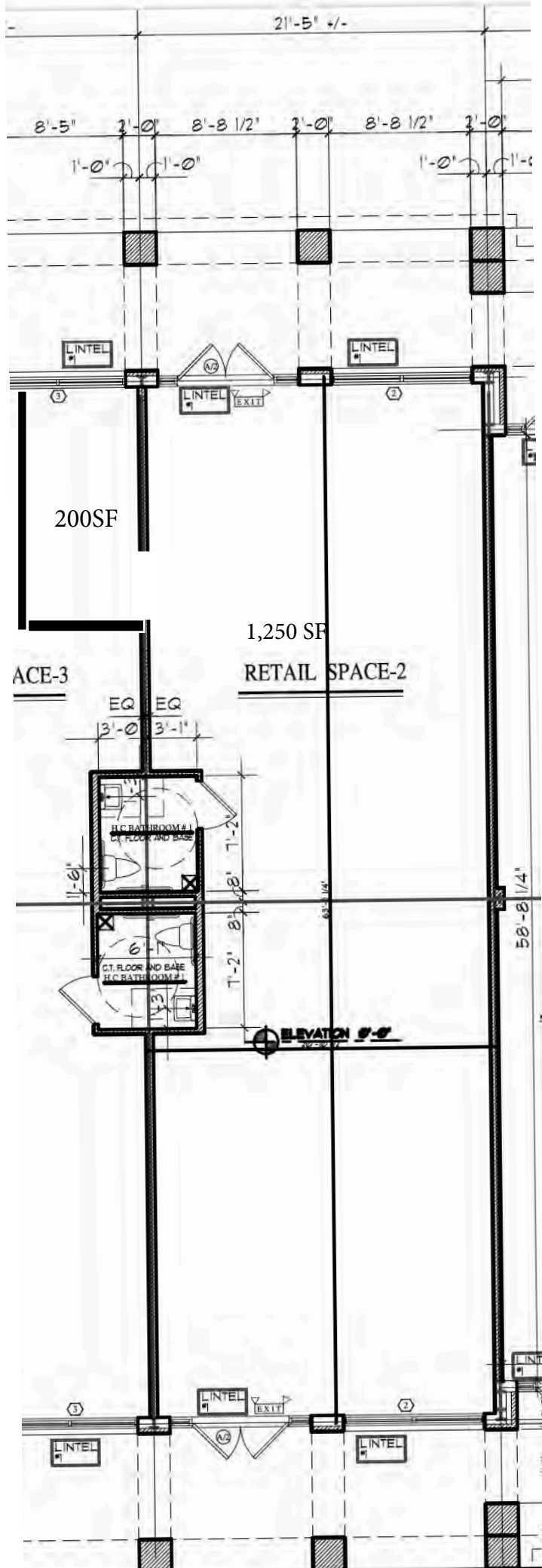
**Contact:** For information, pricing or to view property  
Call: Bruce Wenig (914)844-2478 Or  
Email: [Bwenig@houlihanlawrence.com](mailto:Bwenig@houlihanlawrence.com)  
[www.brucewenig.com](http://www.brucewenig.com)



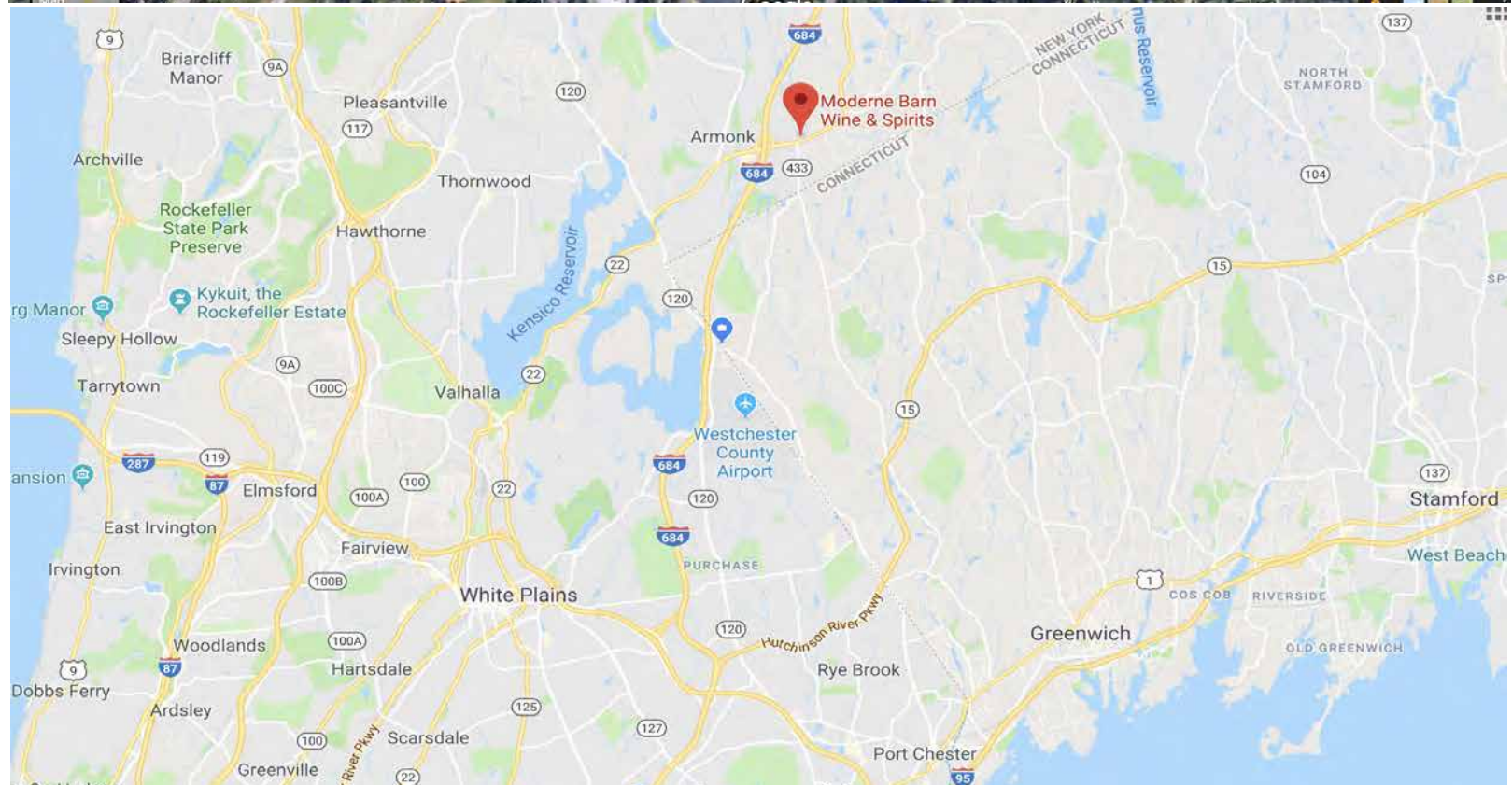




Total  
1,450 SF







**430 Bedford Road, Armonk NY 10504**



**HOULIHAN LAWRENCE**

**399 Main Street  
Armonk NY 10504**

**[www.brucewenig.com](http://www.brucewenig.com)**

**For more information + pricing  
or to view this property**

**Call: Bruce Wenig (914) 844-2478 Or**

**Email: [Bwenig@houlihanlawrence.com](mailto:Bwenig@houlihanlawrence.com)**