

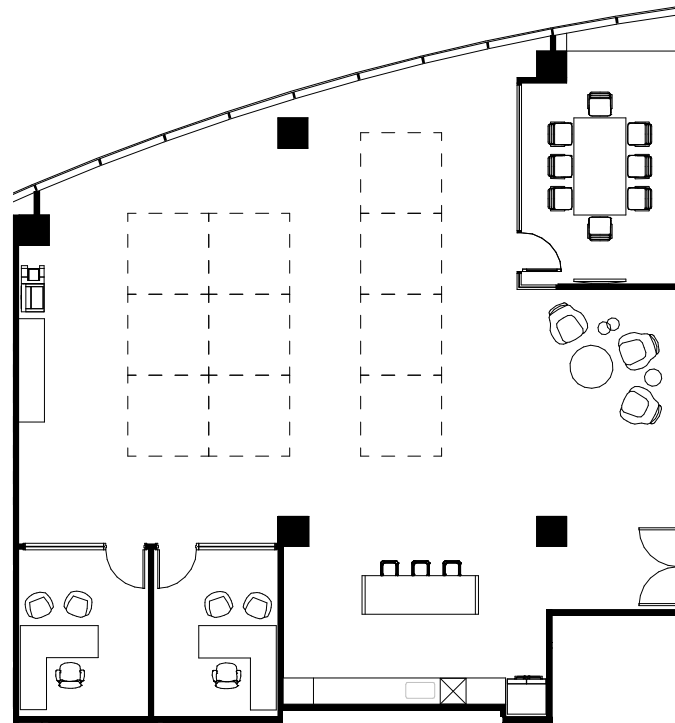
# 3 Hutton Centre

Santa Ana, CA

**Suite 660**

~3,044 RSF

Hypothetical Spec Suite



## Leasing Agents:

### ANDREW ROBBEN

Managing Director  
CA RE Lic. #01372891  
t 949-608-2073  
andrew.robben@nrmk.com

### GREG PUCCINELLI

Senior Managing Director  
CA RE Lic. #01215693  
t 949-608-2036  
greg.puccinelli@nrmk.com

### GEORGE THOMSON

Executive Managing Director  
CA RE Lic. #00947200  
t 949-608-2037  
george.thomson@nrmk.com

### RAYLEE OVERTON

Transaction Manager  
CA RE Lic. #02082860  
t 949-608-2012  
raylee.overton@nrmk.com

18401 Von Karman Avenue, Suite 150, Irvine, CA 92612 | Corporate License #01355491

The distributor of this communication is performing acts for which a real estate license is required. The information contained herein has been obtained from sources deemed reliable but has not been verified and no guarantee, warranty or representation, either express or implied, is made with respect to such information. Terms of sale or lease and availability are subject to change or withdrawal without notice.

**NEWMARK**