

SAN MATEO SCIENCE CENTER

Class A Lab Space in the Heart of the Peninsula



NEWMARK

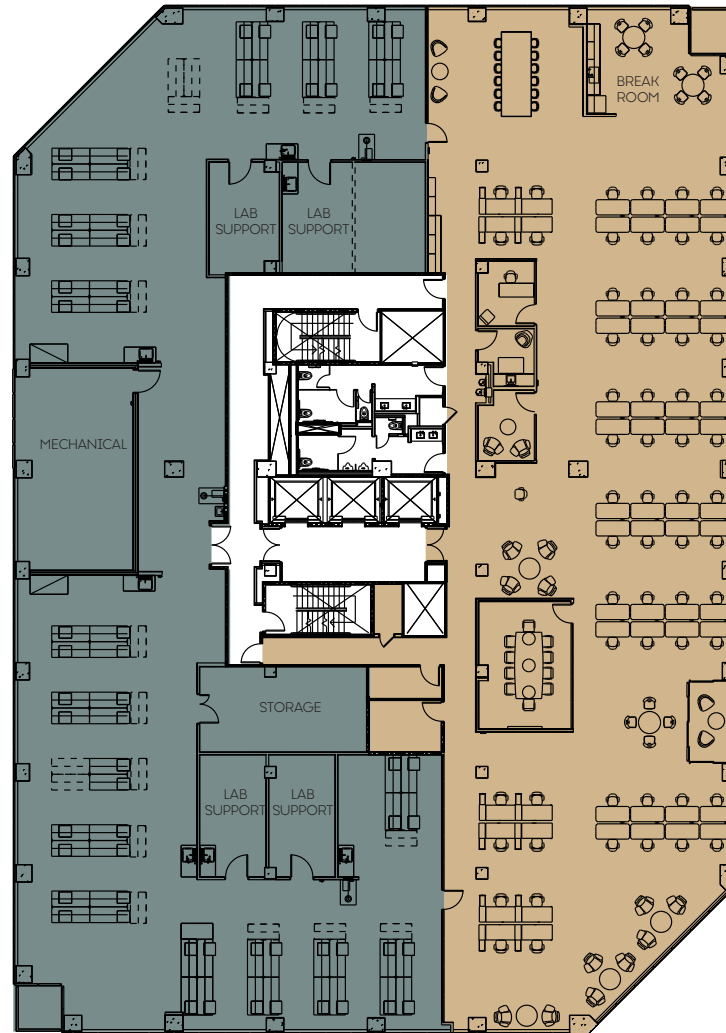
SAN MATEO / **SCIENCE CENTER**

MARINERS ISLAND BLVD

901 / Floor 3

Single Tenant Floor Plan

± 21,100 Square Feet



Lab Benches: 62*

Workstations: 60

Office/Huddle: 2

Conference Rooms: 1

Wellness Room: 1

*Casework provided

±10,550 SF LAB

±10,550 SF OFFICE

Bill Benton
Vice Chairman
415 274 4421
bill.benton@nmrk.com
Lic. #01247617

Eric Bluestein
Executive Managing Director
650 688 8547
eric.bluestein@nmrk.com
Lic. #01720416

John Kraft
Managing Director
650 358 5277
john.kraft@nmrk.com
Lic. #01787698

Neill Sherron
Partner, Portfolio Leasing
919 414 0320
nsherron@lfrp.com





NEWMARK

JOHN KRAFT

Managing Director
650 358 5277
john.kraft@nmrk.com
Lic. #01787698

ERIC BLUESTEIN

Executive Managing Director
650 688 8547
eric.bluestein@nmrk.com
Lic. #01720416

BILL BENTON

Vice Chairman
415 274 4421
bill.benton@nmrk.com
Lic. #01247617

COLIN KLOEZEMAN

Associate
650 688 8532
colin.kloezeman@nmrk.com
Lic. #02210827

NEILL SHERRON

Partner, Portfolio Leasing
919 414 0320
nsherron@lfrep.com

Procuring broker shall only be entitled to a commission, calculated in accordance with the rates approved by our principal only if such procuring broker executes a brokerage agreement acceptable to us and our principal and the conditions as set forth in the brokerage agreement are fully and unconditionally satisfied. Although all information furnished regarding property for sale, rental, or financing is from sources deemed reliable, such information has not been verified and no express representation is made nor is any to be implied as to the accuracy thereof and it is submitted subject to errors, omissions, change of price, rental or other conditions, prior sale, lease or financing, or withdrawal without notice and to any special conditions imposed by our principal.