

FLEX CONDO FOR SUBLEASE

887-889 N DOUGLAS ST



887-889 N Douglas St - Suite 100, El Segundo CA, 90245

For more
information

Erik Stibel
[424.241.4795](tel:424.241.4795)
erik@crea-la.com
CA DRE License #02080746

887-889 N DOUGLAS ST



Available	Immediately	Rent	\$3.50 per SF, Modified Gross
Term	August 31, 2027	Premises	7,369 RSF
Parking	30 unreserved spaces at no cost	Layout	1 private office, 2 conference rooms, 1 kitchen, open area. Lab located by garage door

887-889 N Douglas St - Suite 100, El Segundo CA, 90245

For more
information

Erik Stiebel
[424.241.4795](tel:424.241.4795)
erik@crea-la.com
CA DRE License #02080746

887-889 N DOUGLAS ST



887-889 N Douglas St - Suite 100, El Segundo CA, 90245

**For more
information**

Erik Stiebel
[424.241.4795](tel:424.241.4795)
erik@crea-la.com
CA DRE License #02080746

887-889 N DOUGLAS ST



887-889 N Douglas St - Suite 100, El Segundo CA, 90245

**For more
information**

Erik Stiebel
424.241.4795
erik@crea-la.com
CA DRE License #02080746

887-889 N DOUGLAS ST

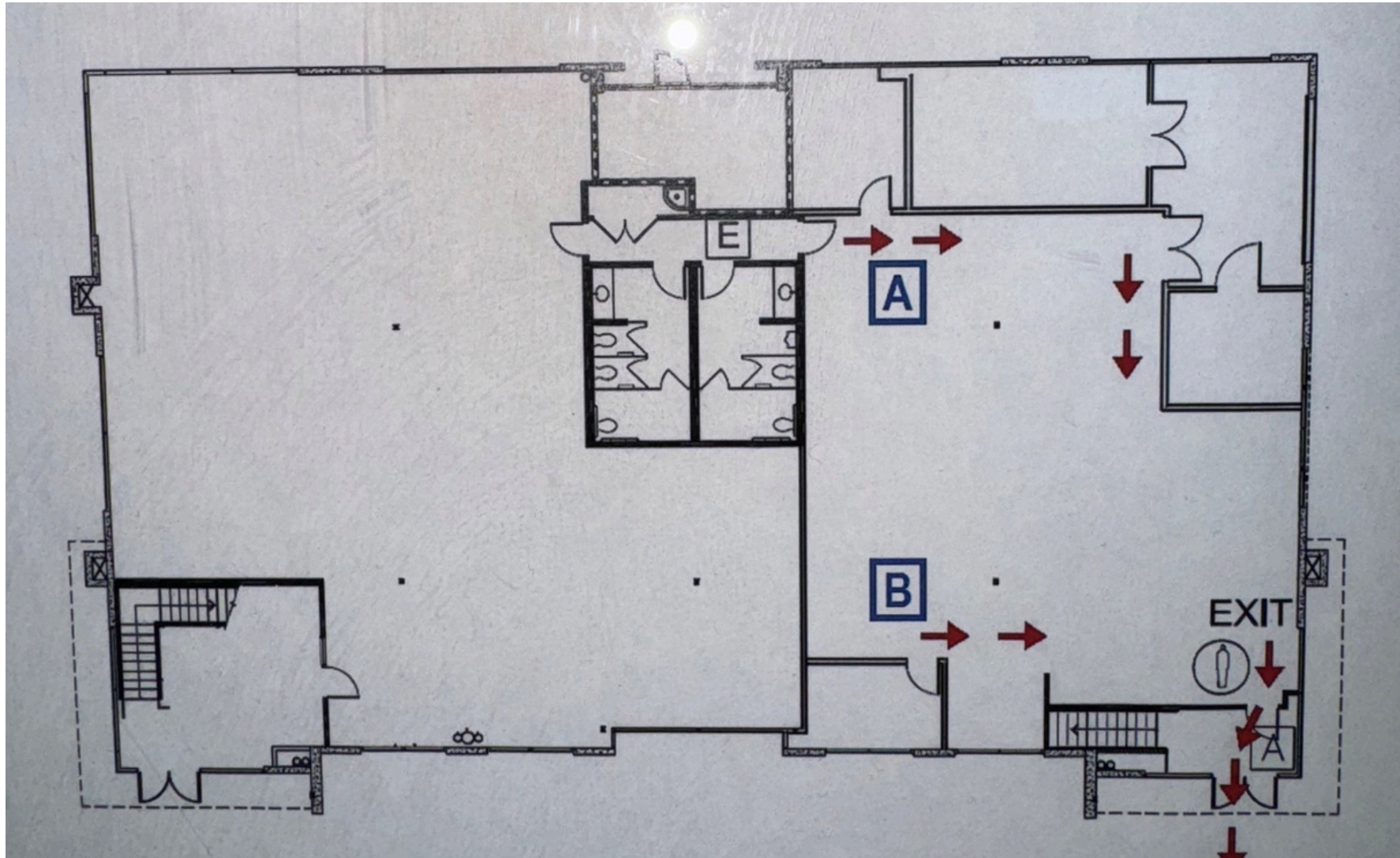


887-889 N Douglas St - Suite 100, El Segundo CA, 90245

**For more
information**

Erik Stiebel
[424.241.4795](tel:424.241.4795)
erik@crea-la.com
CA DRE License #02080746

887-889 N DOUGLAS ST



887-889 N Douglas St - Suite 100, El Segundo CA, 90245

For more
information

Erik Stiebel
424.241.4795
erik@crea-la.com
CA DRE License #02080746