



# For Sublease

11315 Corporate Blvd | Suite 220  
Orlando, FL 32817

**3,385 SF Available**

 **JLL** SEE A BRIGHTER WAY

# Sublease Available now 3,385 SF



Total building size 64,448 SF



Class B building



Ideally situated adjacent to UCF and near Central Florida Research Park



Furniture available



Contact broker for rental rate

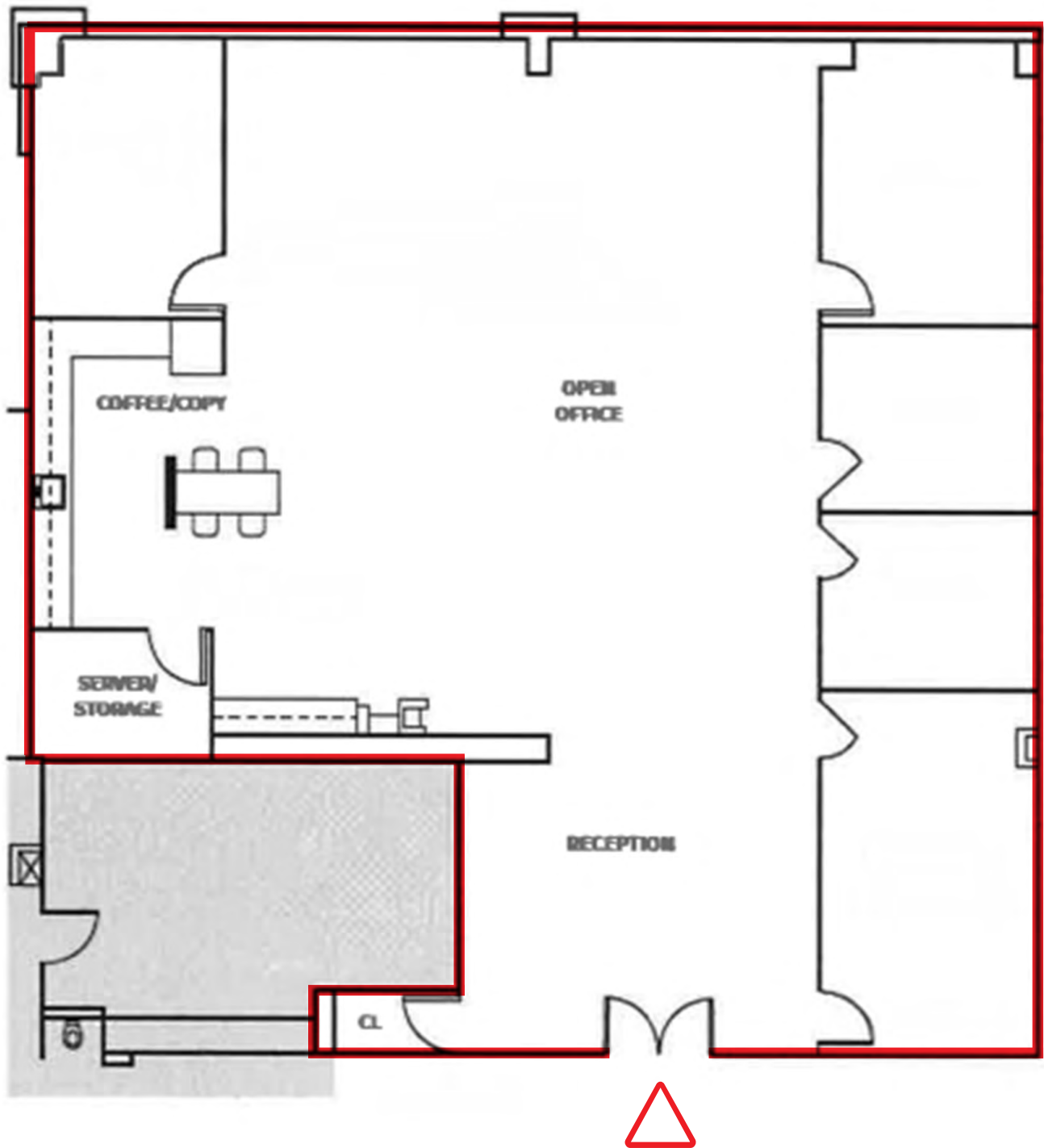


Sublease term through September 2028

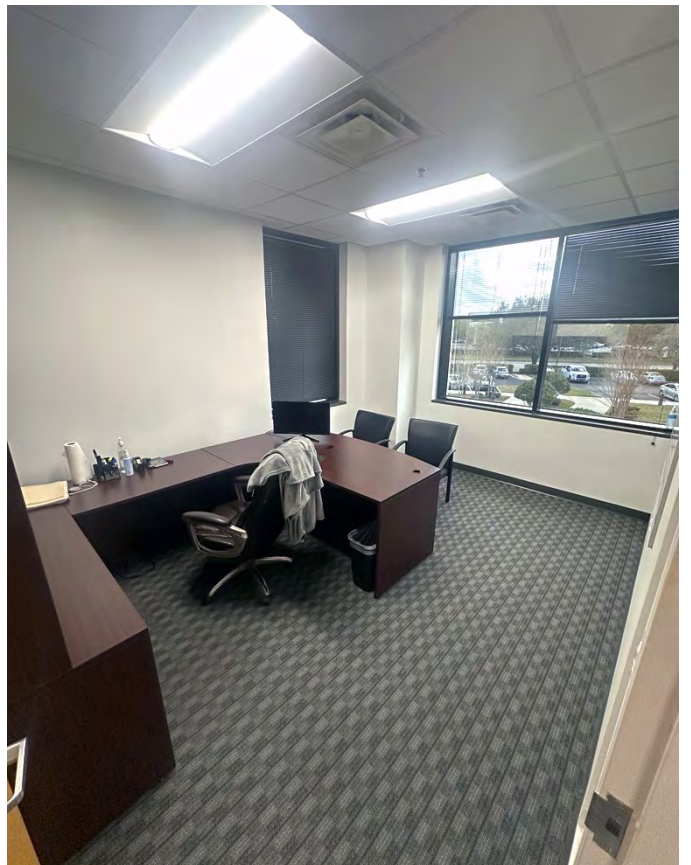
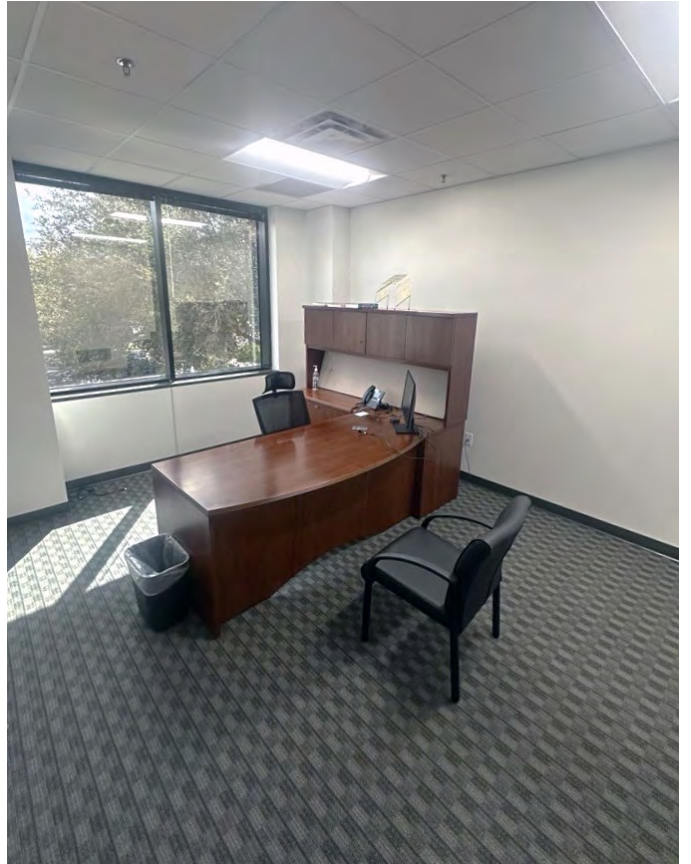
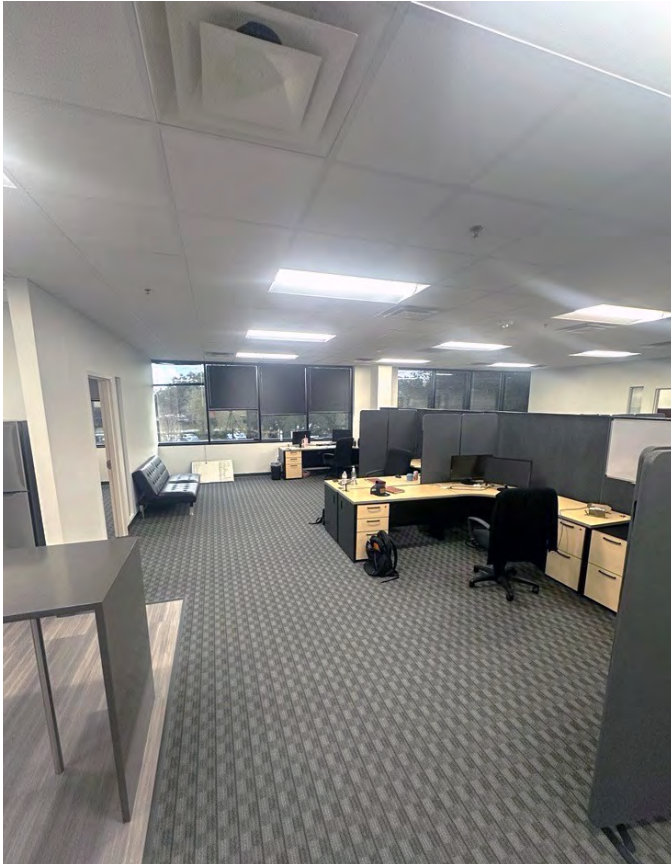


Includes reception, 4 offices, conference room, open workspace, & copy/break room





[Click here for a virtual tour of Suite 220](#)



**JLL.com**

**Brooks Robinson**

Senior Associate

[brooks.robinson@jll.com](mailto:brooks.robinson@jll.com)

+1 407 982 8773