



Cal Select Properties, Inc.

MANAGEMENT - LEASING - INVESTMENTS

1964 Westwood Blvd. - Ste 240 - Los Angeles, CA 90025 - Mail - P.O. Box 241668 - Los Angeles, CA 90024
310.470.9350 (P) - 310.470.9395 (F) - www.calselectproperties.com

PRIME RETAIL STOREFRONT SPACE FOR LEASE 1908 Westwood Boulevard. Los Angeles. 90025



- Location:** Southeast corner of Westwood Boulevard and Missouri Avenue
- Available:** Now
- Space:** Approx. 936 rentable square feet
- Rental Rate:** Approximately \$4,500.00 per month
(\$3.60 psf. per. mo. plus NNN est. of \$1.20 psf. per. mo.)
- Features:** Space includes large storefront windows, a private restroom, Front and rear doors. 1 Parking space in the back of the building. Excellent signage and visibility from Westwood Blvd. Adjacent to Mashti Malone's Ice Cream, Petco, and House Of Bread.
- Parking:** Ample all day metered and open residential street parking.
- Contact:** Chad M. Eshaghoff, CPM, CCIM ext. 25
chade@calselectproperties.com DRE License 01135079

Cal Select Properties, Inc.

DRE License 01473862

The information furnished herein has been obtained from sources deemed reliable. No representation or warranty as to the accuracy thereof is made, and such information is subject to errors, omissions, prior sale, lease or withdrawal without notice.

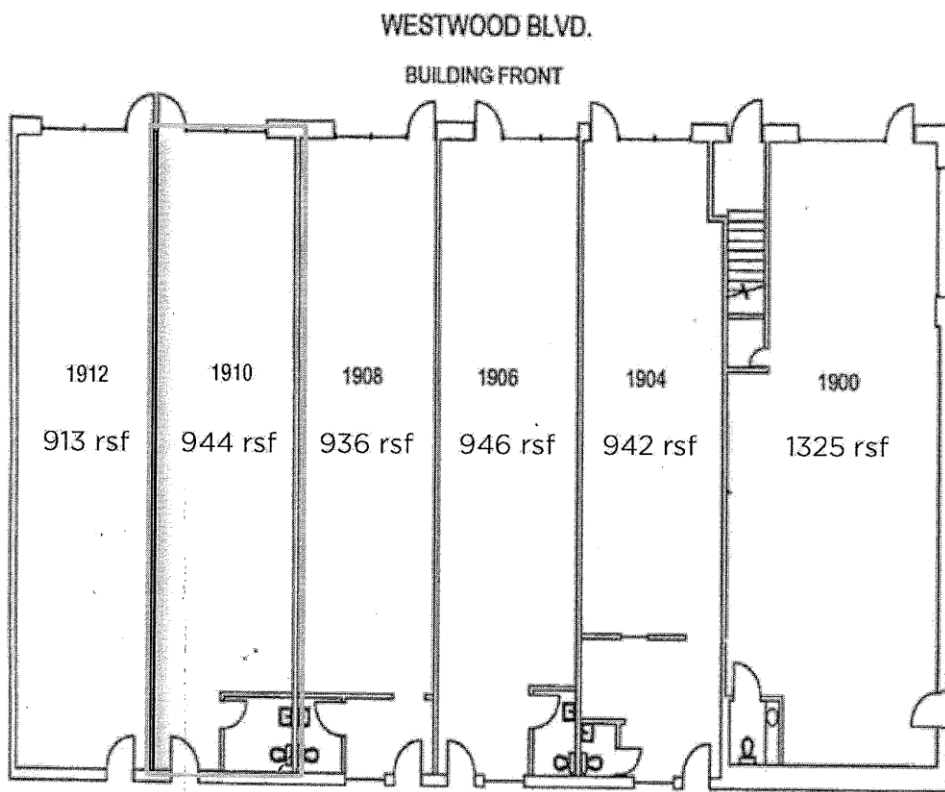


**Cal Select
Properties, Inc.**

MANAGEMENT - LEASING - INVESTMENTS

1964 Westwood Blvd. - Ste 240 - Los Angeles, CA 90025 - Mail - P.O. Box 241668 - Los Angeles, CA 90024
310.470.9350 (P) - 310.470.9395 (F) - www.calselectproperties.com

PRIME RETAIL STOREFRONT SPACE FOR LEASE
1908 Westwood Boulevard. Los Angeles. 90025



Cal Select Properties, Inc. DRE License 01473862

The information furnished herein has been obtained from sources deemed reliable. No representation or warranty as to the accuracy thereof is made, and such information is subject to errors, omissions, prior sale, lease or withdrawal without notice.