

PREMIER RETAIL AT LEGACY TOWER

1 Bausch and Lomb Place, Rochester, NY 14604



ADAM BORRELL

Senior Leasing Executive

(585) 615-3593

aborrell@buckprop.com

SQUARE FOOTAGE

1,510 SF

ABOUT THE SPACE

Legacy Tower is a class A office building is known for its dramatic design, granite façade and 11,000 square foot glass-enclosed Wintergarden. The 1,510 SF ground floor corner space is ideal for retail with it's street visibility and location. The building sits moments from the gateway to downtown with several professional offices within the building and surrounding streets as well as residential buildings just steps away.

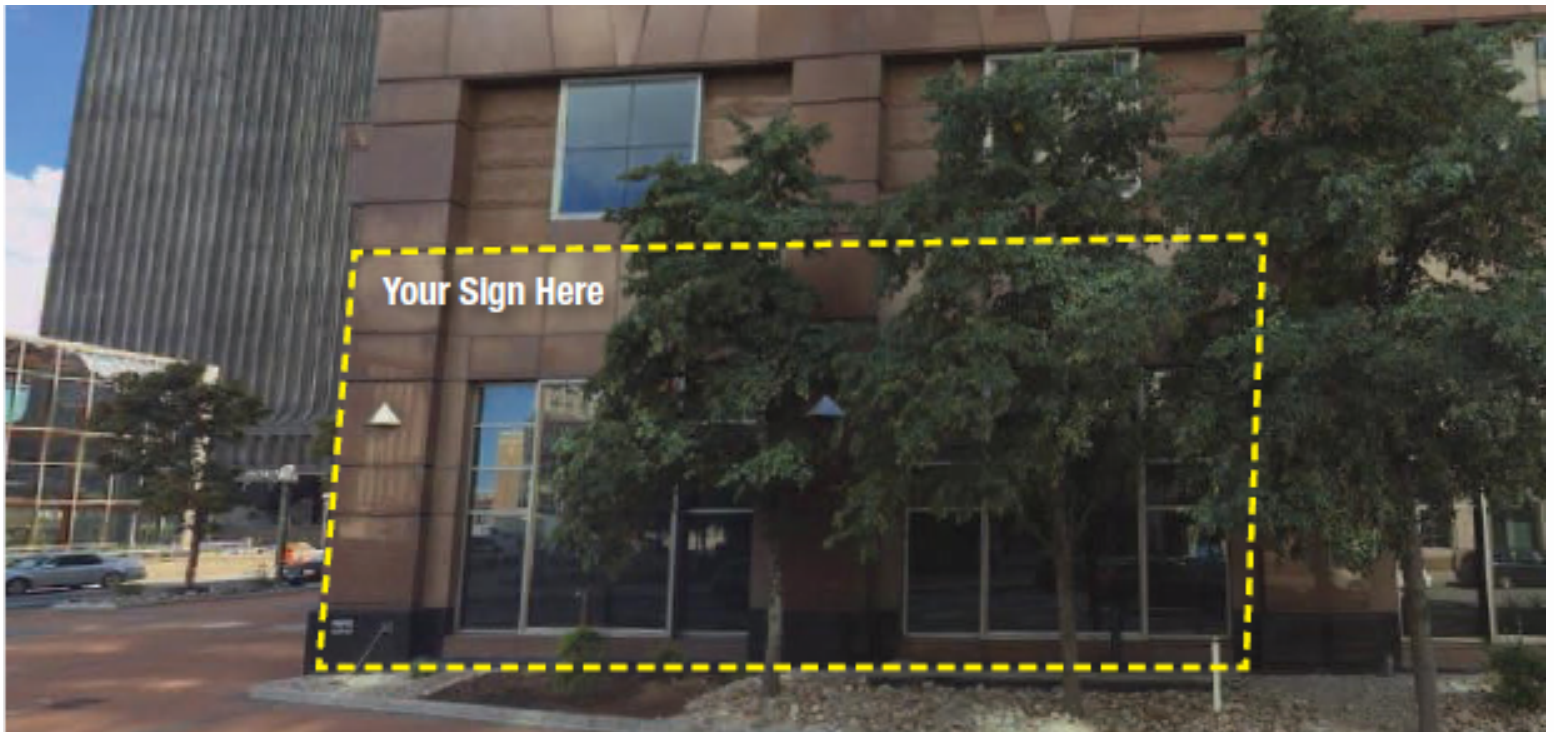
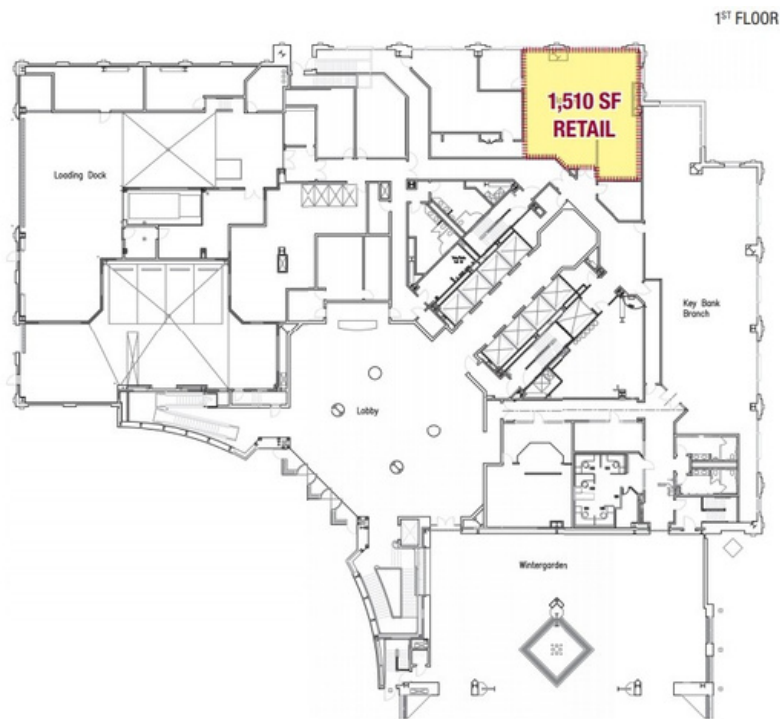


BUCKINGHAM PROPERTIES

(585) 295-9500 | www.buckprop.com | 259 Alexander Street, Rochester, NY

PREMIER RETAIL AT LEGACY TOWER

1 Bausch and Lomb Place, Rochester, NY 14604



BUCKINGHAM PROPERTIES

(585) 295-9500 | www.buckprop.com | 259 Alexander Street, Rochester, NY